

GENERAL INFORMATION

LENGTH BETWEEN PERPENDICULARS	578'-0"
LENGTH OVER ALL	588'-0"
BREADTH MOLDED EXTREME (FRS 77-79) AT D.W.L.	60'-7 1/2"
DRAFT ABOVE BOTTOM OF KEEL (DESIGNED)	21'-7"
OUTBOARD SHAFTS INCLINE DOWN & AFT AT ANGLE OF	2° 25'-37"
INBOARD SHAFTS INCLINE DOWN & AFT AT ANGLE OF	2° 16'-0"
OUTBOARD SHAFTS DIVERGE FROM & OF SHIP AFT AT ANGLE OF	3° 22'-17"
INBOARD SHAFTS DIVERGE FROM & OF SHIP AFT AT ANGLE OF	0° 40'-35"
& OUTBOARD SHAFTS AT FR. 92 FROM & OF SHIP	15'-2"
& OUTBOARD SHAFTS AT FR. 121 FROM & OF SHIP	22'-0"
& INBOARD SHAFTS AT FR. 103 FROM & OF SHIP	8'-7"
& INBOARD SHAFTS AT FR. 133 FROM & OF SHIP	10'-0"
& OUTBOARD SHAFTS ABOVE BOTTOM OF KEEL AT FR. 92	11'-8"
& OUTBOARD SHAFTS ABOVE BOTTOM OF KEEL AT FR. 121	6'-9"
& INBOARD SHAFTS ABOVE BOTTOM OF KEEL AT FR. 103	11'-6"
& INBOARD SHAFTS ABOVE BOTTOM OF KEEL AT FR. 133	6'-5"
OUTBOARD SHAFTS RAKE DOWN	50862 IN. PER FT.
INBOARD SHAFTS RAKE DOWN	47500 IN. PER FT.
OUTBOARD SHAFTS RAKE OUT	70689 IN. PER FT.
INBOARD SHAFTS RAKE OUT	14166 IN. PER FT.
INBOARD SHAFTS MEET ON & 40.493' ABOVE BOTTOM OF KEEL & 315.055' FORD OF A.P.	
INBOARD SHAFTS CROSS BOTTOM OF KEEL	249.926' AFT OF A.P.
OUTBOARD SHAFTS MEET ON & 15.829' ABY. BOT. OF KEEL & 470.468' FORD OF A.P.	
OUTBOARD SHAFTS CROSS BOTTOM OF KEEL	70.292' AFT OF A.P.
CENTER OF OUTBOARD SCREWS FORD OF A.P.	94'-0"
CENTER OF INBOARD SCREWS FORD OF A.P.	46'-0"
RUPPER AXIS FORD OF A.P.	34'-0"
LEADING EDGE STRUTS FORD OF A.P. (INBOARD SHAFT)	53'-11"
LEADING EDGE STRUTS FORD OF A.P. (OUTBOARD SHAFT)	101'-11"

HEIGHT ABOVE D.W.L. (21'-7" ABOVE BOTTOM KEEL)

DECK OVER HANGAR-TOP OF PLATING	33'-10 1/2"
MACHINE GUN PLATFORM AFT.-TOP OF PLATING	44'-10 1/2"
UPPER DECK AT STEM	28'-10 1/2"
MAIN DECK AT STERN	16'-1 1/2"
MAIN DECK AT FRS 64 TO 96 INCL. (AT SIDE)	12'-7 1/2"

SMALL BOATS

	MEN	
	EACH	TOTAL
2 40 FOOT MOTOR LAUNCHES	90	180
1 36 FOOT MOTOR LAUNCH	70	70
3 35 FOOT MOTOR BOATS	27	81
1 30 FOOT SAILING WHALE BOAT	40	40
2 26 FOOT MOTOR WHALE BOATS	24	48
2 12 FOOT PUNTS		
7 60 PERSON CAPACITY Balsa RAFTS	60	420
7 40 PERSON CAPACITY Balsa RAFTS	40	280
7 25 PERSON CAPACITY Balsa RAFTS	25	175
TOTAL ACCOMODATION		1294

FIRE PLUGS

LOCATION	NO.	LOCATION	NO.
DK. OVER HANGAR FR. 108 (S)	2	2ND DK. FR. 19 (P); FR. 34 (S);	
COMM. PLATFORM FR. 45 (S)	1	FR. 52 (P); FR. 67 (S); FR. 81 (S);	
UPPER DK. FR. 12 (S); FR. 32 (S)		FR. 110 (S); FR. 127 (S)	8
FR. 53 (P); FR. 70 (S)	5	1ST PLAT. FR. 28 (P); FR. 47 (S);	
MAIN DK. FR. 4 (P); FR. 31 (S); FR. 53 (P);		FR. 110 (S); FR. 127 (S)	5
FR. 70 (S); FR. 81 (S); FR. 112 (S); FR. 124 (S)	8	2ND PLAT. FR. 26 (S); FR. 36 (S);	
		FR. 47 (S); FR. 103 (S); FR. 119 (S)	5
TOTAL NO. OF FIRE PLUGS			34

COMPLEMENT

CAPTAIN	1	CHIEF PETTY OFFICERS	38
EXECUTIVE OFFICER	1	CREW	859
WARDROOM OFFICERS	33	MARINES	41
WARRANT OFFICERS	9		
TOTAL		TOTAL	938

ADDITIONAL COMPLEMENT FOR FLAG SHIP

REAR ADMIRAL	1	CHIEF PETTY OFFICERS	2
		CREW	40
WARDROOM OFFICERS	4	MARINES	6

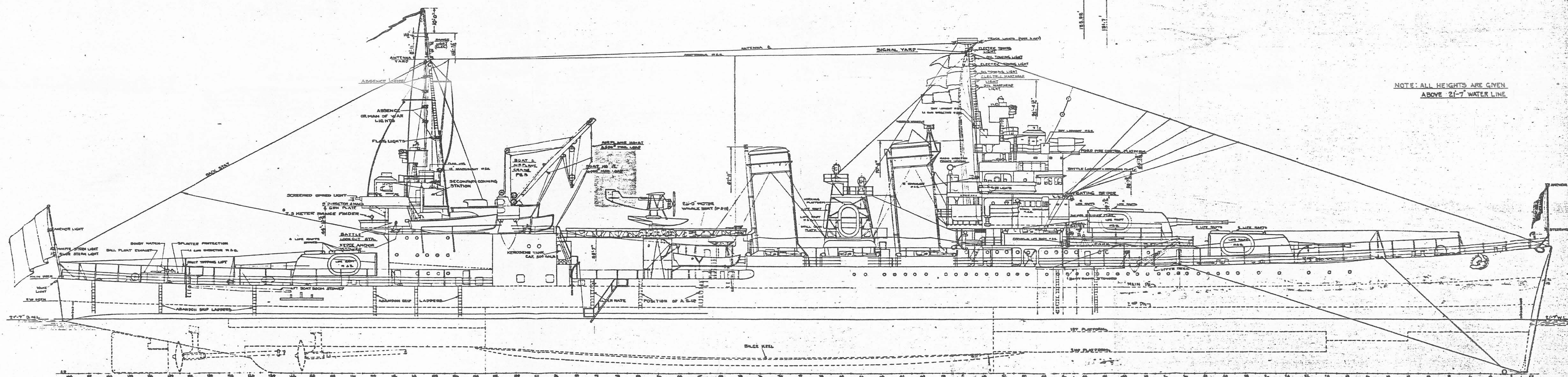
HEIGHT ABOVE D.W.L. (21'-7" ABOVE BOTTOM KEEL)

D/F ANTENNA PLATFORM	108'-7 1/2"
TOP OF FLAG & PENNANT STAFF CAR MAINMAST	123'-7 1/2"
& OF TRUCK LIGHT ON D/F ANTENNA PLATFORM	109'-1 1/2"
TOP OF TRUCK LIGHT ON MAINMAST	113'-7 1/2"
ELEC. MASTHEAD LIGHT FOREMAST (LOE LIGHT)	94'-9 1/2"
ELEC. RANGE LIGHT MAINMAST (LOE LIGHT)	109'-10 1/2"
BATTLE LOOKOUT PLATFORM (FORD)	58'-7 1/2"
AFTER BATTLE LOOKOUT PLATFORM	33'-10 1/2"
NAVIGATING BRIDGE-TOP OF PLATING	49'-7 1/2"
COMMUNICATION PLATFORM-TOP OF PLANKING	29'-6 1/2"
MID SHIP SEARCHLIGHT PLATFORM	49'-10 1/2"

HEIGHT OF BROOKLYN BRIDGE AT CENTER OF SPAN
ATMOSPHERIC TEMPERATURE 92° F

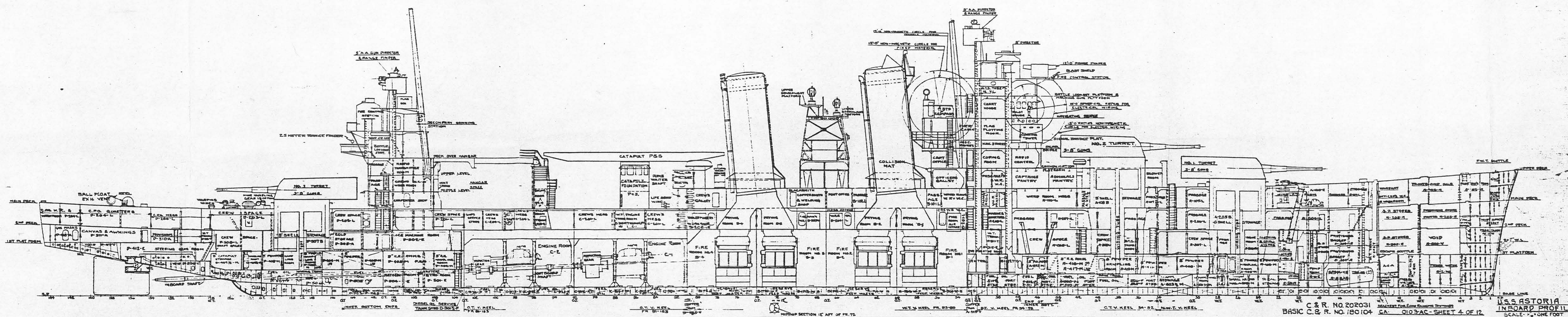
ABOVE MEAN LOW WATER
185.00
ABOVE MEAN HIGH WATER
181.7

NOTE: ALL HEIGHTS ARE GIVEN
ABOVE 21'-7" WATER LINE



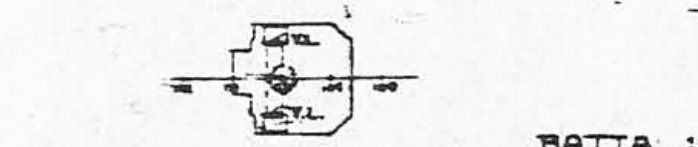
SHIP SECTION 1/4" = 1' H.T.

C & R. NO. 202031
BASIC C & R. NO. 180104 CA -0103-AC SHEET NO. 3 OF 12
U.S.S. ASTORIA
OUTBOARD PROFILE
SCALE 1/16" = 1 FOOT

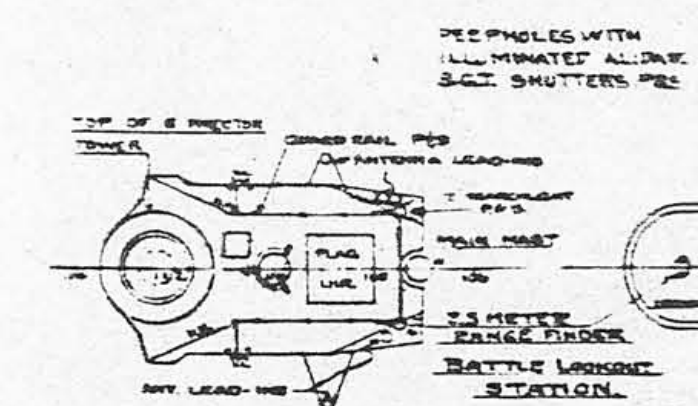


C & R. NO. 202031
 BASIC C. & R. NO. 180104
 CA. 0103-AC-SHEET 4 OF 12
 U.S. ASTORIA
 INBOARD PROFILE
 SCALE: 1" = ONE FOOT

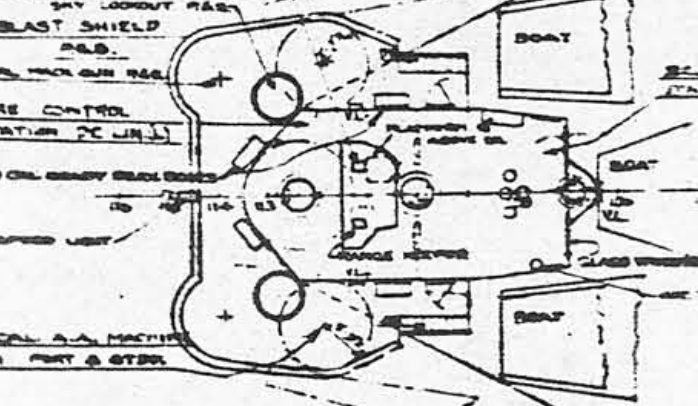
ABBREVIATIONS
 VL = VERTICAL LADDER
 B.P.E.B. = BOLTED PLATE MANHOLE
 LOCKER = LOCKERS
 F.P. = FIRE PLUG
 H.E.C. = HOSE COCK
 P.S. = PORT & STBD.



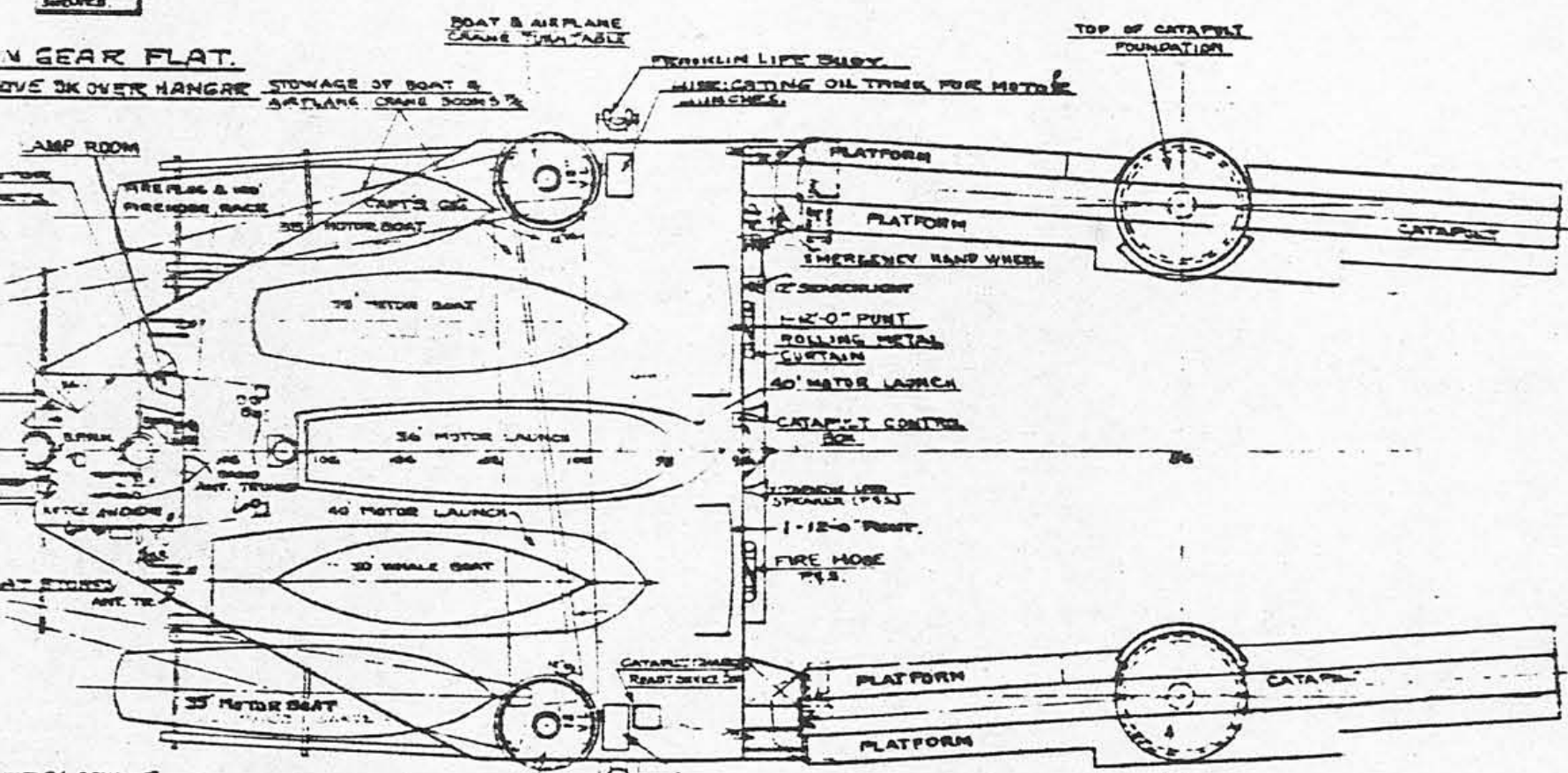
5' R.A. DIRECTOR PLATFORM



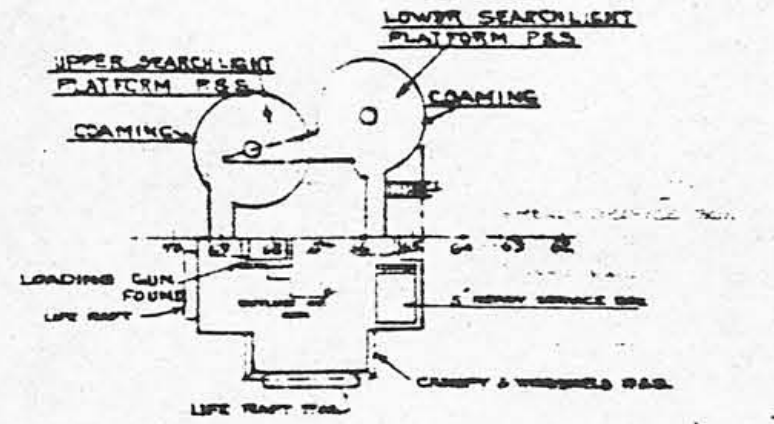
TOP OF FIRE CONTROL AND SECONDARY CONNING STATIONS



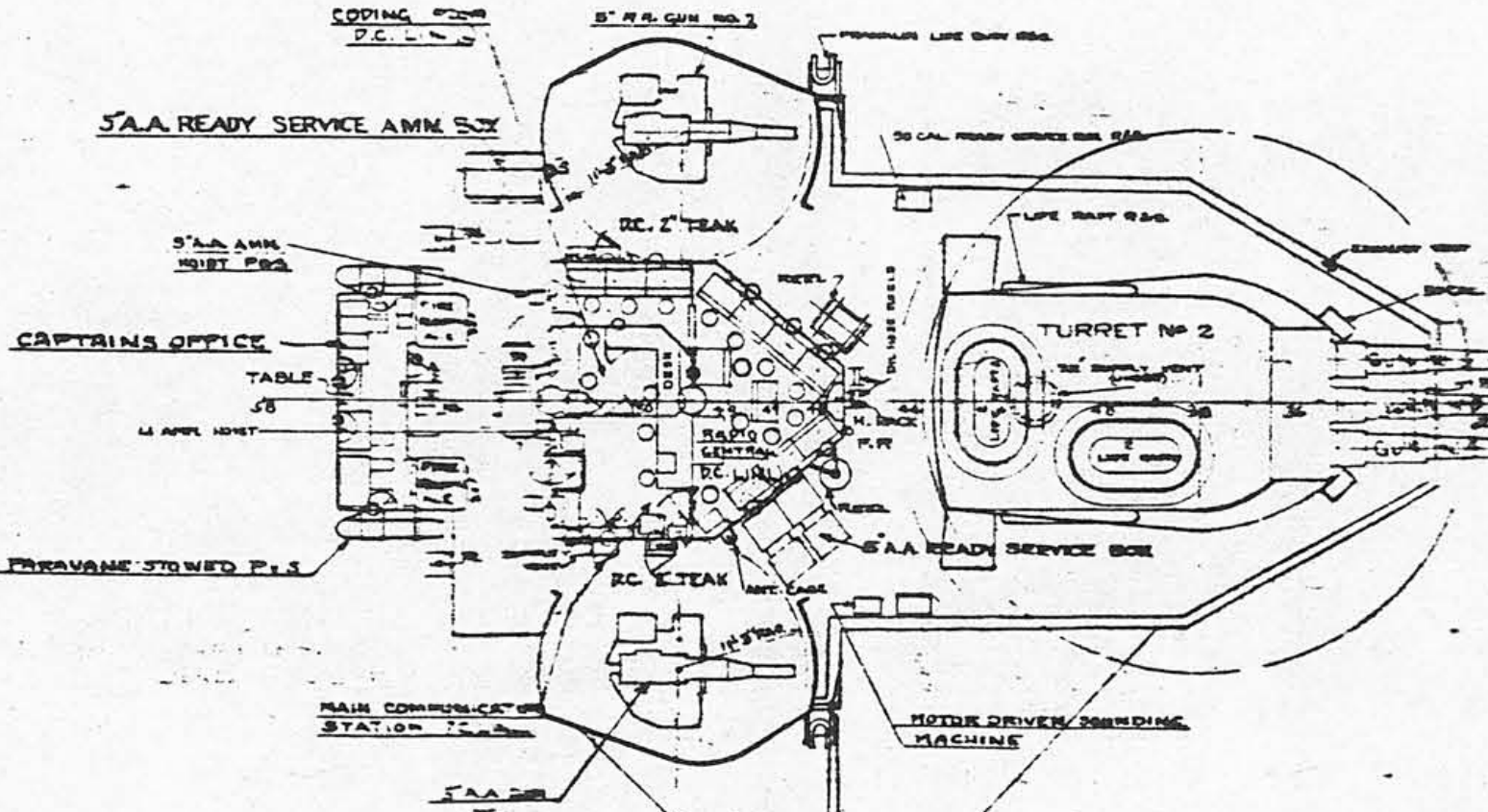
8 DIRECTOR & MACHINE GUN PLATFORM



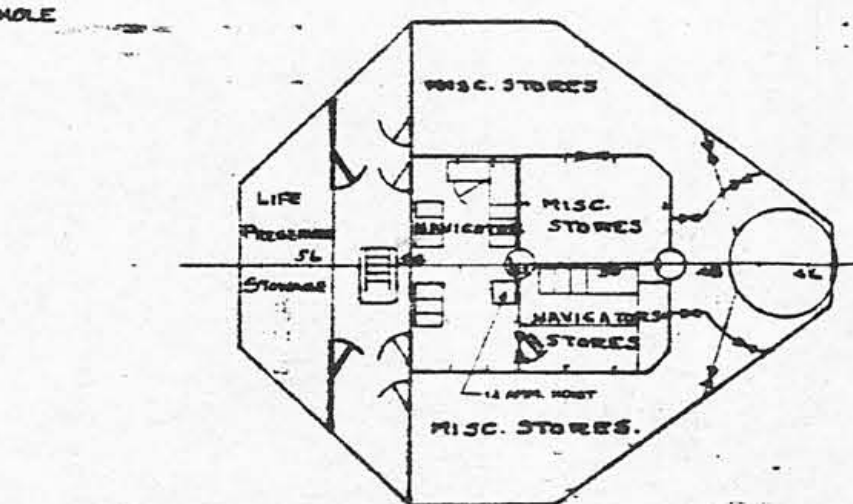
DECK OVER HANGAR
 55'-3" ABOVE BASE LINE
 CAMBER-9" IN 57'-8" NO SHEER



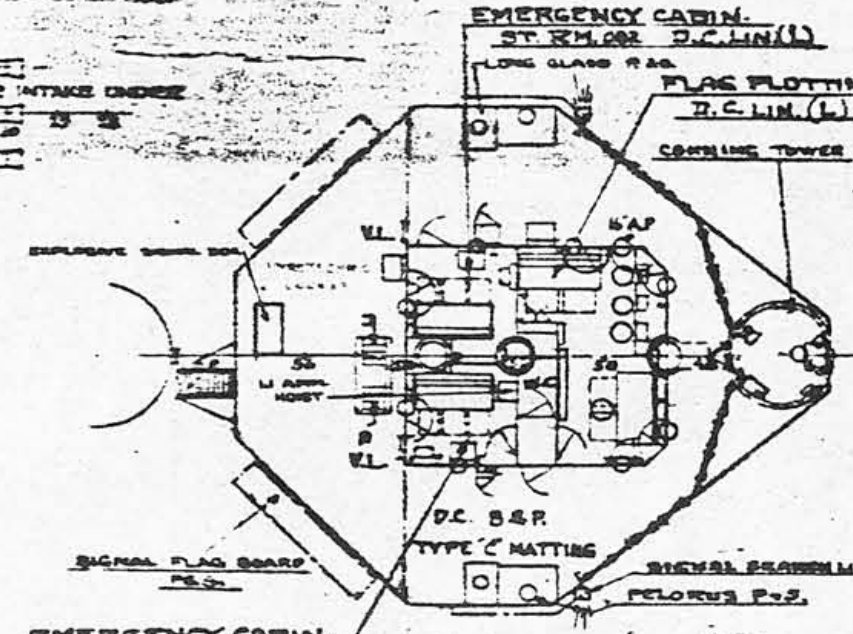
PLAN VIEW
 DRILL GUN & SEARCHLIGHT PLATFORMS
 NO CAMBER NO SHEER



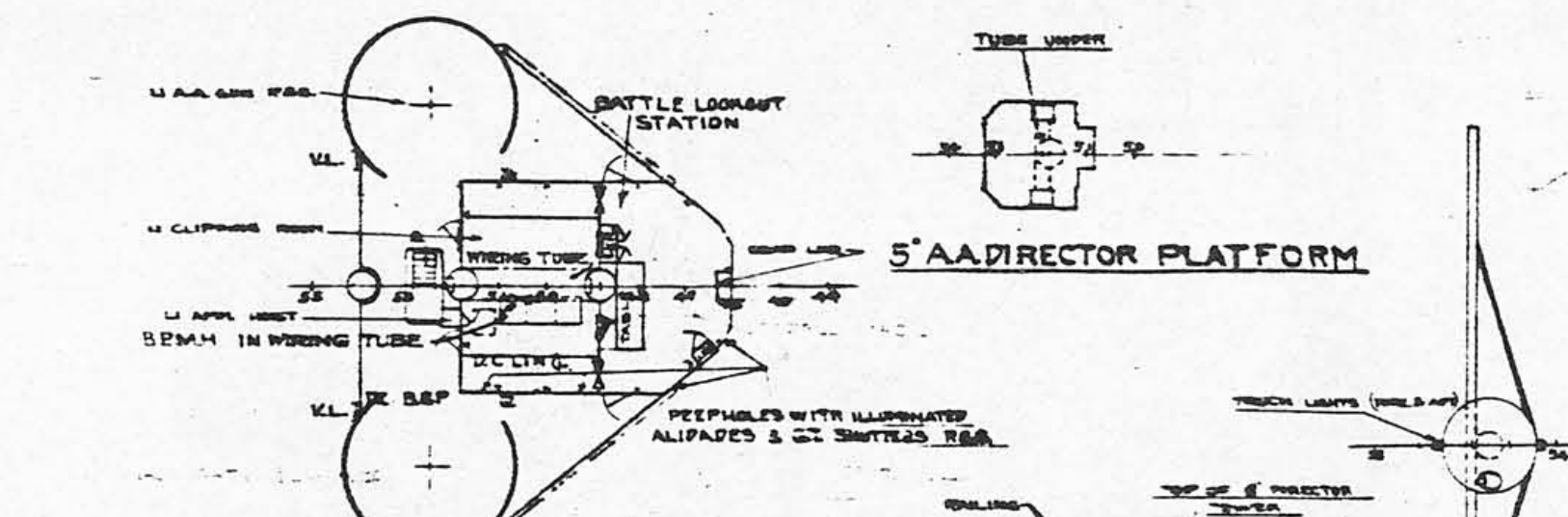
COMMUNICATION PLATFORM
 CAMBER 9" IN 57'-8" NO SHEER
 50'-9" ABOVE BASE LINE



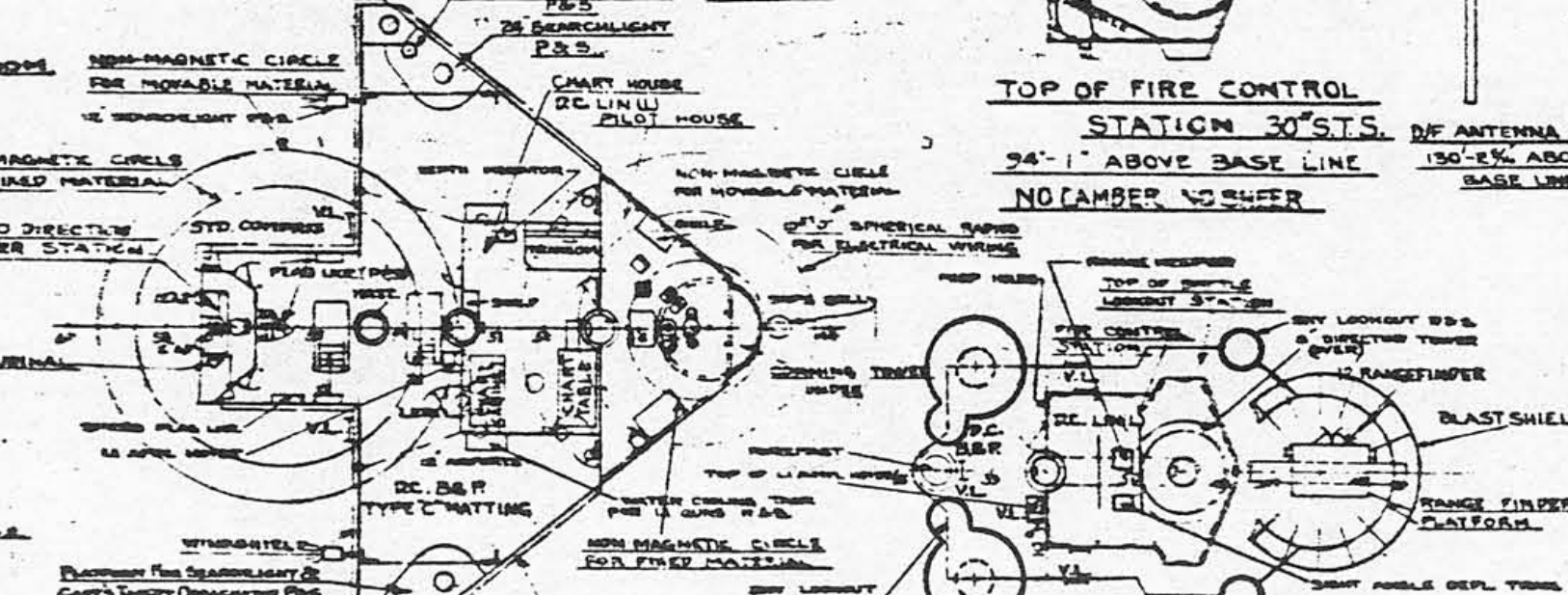
STORES ON SIGNAL BRIDGE
 58'-9" ABOVE BASE LINE D.C. B+P.



SIGNAL BRIDGE PLATFORM
 62'-2" ABOVE BASE LINE
 CAMBER 9" IN 57'-8" NO SHEER



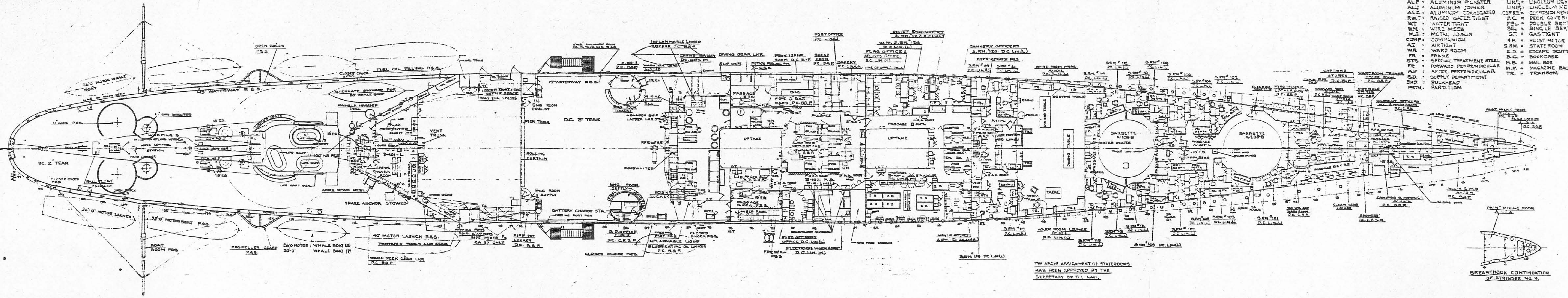
5' A DIRECTOR PLATFORM



BATTLE LOOKOUT AND MACHINE GUN PLATFORM
 80'-0" ABOVE BASE LINE - CAMBER-9" IN 57'-8" NO SHEER

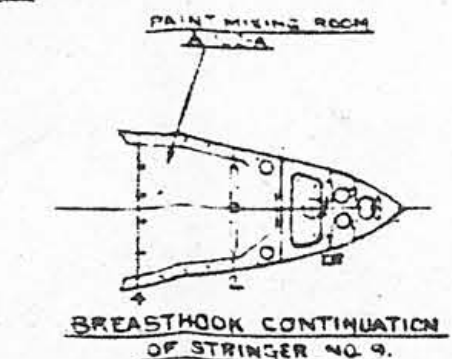
NAVIGATING BRIDGE
 7'-0" ABOVE BASE LINE
 CAMBER 9" IN 57'-8" NO SHEER
 C & R NO. 208331
 BASIC C & R NO. 180104 CA -0103-AC SHEET 5 OF 12
 SCALE 1/2" = ONE FOOT

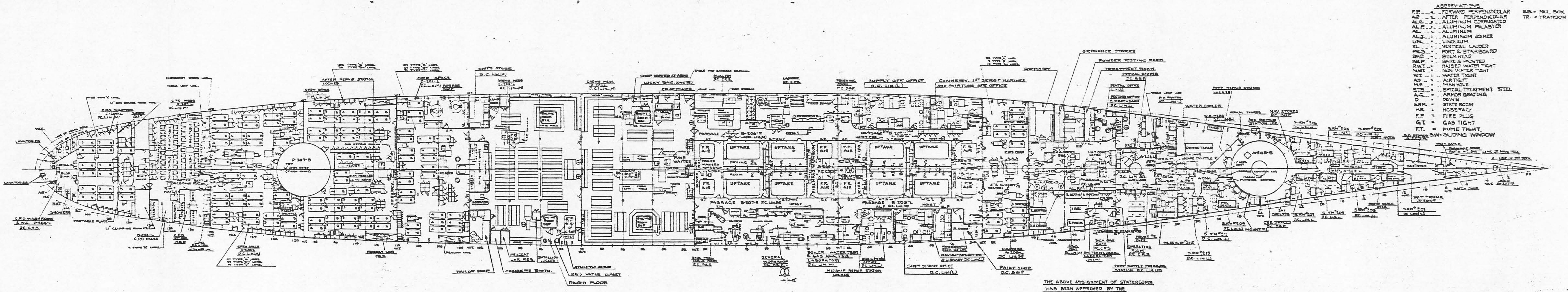
U.S.S. ASTORIA
 BRIDGES



- ABBREVIATIONS**
- | | |
|-------------------------------|------------------------------------|
| VL = VERTICAL LINE | HR = HOSE RACK |
| P.S. = PORT & STARBOARD | F.P. = FIRE PLUG |
| ALUM = ALUMINUM | LIN. = LINOLEUM |
| ALP = ALUMINUM PLASTER | LINL = LINOLEUM LIGHT |
| ALJ = ALUMINUM JOINER | LINM = LINOLEUM MEDIUM |
| ALC = ALUMINUM CORRUGATED | CRRS = COMPOSITION RESISTING STEEL |
| RWT = RAISED WATER TIGHT | D.C. = DECK COVERING |
| WT = WATER TIGHT | DBL = DOUBLE BERTH |
| WM = WIRE MESH | SGL = SINGLE BERTH |
| M.J. = METAL JOINER | GT = GASTIGHT |
| COMP = COMPANION | NM = HOIST MOTOR |
| AT = AIR TIGHT | S.R.M. = STATE ROOM |
| WR = WARD ROOM | E.S. = ESCAPE SCUTTLE |
| FR = FRAME | B.C. = BOOKCASE |
| STS = SPECIAL TREATMENT STEEL | M.B. = MAIL BOX |
| FP = FORWARD PERPENDICULAR | M.R. = MAGAZINE RACK |
| AP = AFTER PERPENDICULAR | TR = TRANSOM |
| SD = SUPPLY DEPARTMENT | |
| BHD = BULKHEAD | |
| PRTN. = PARTITION | |

THE ABOVE ASSIGNMENT OF STATEROOMS
HAS BEEN APPROVED BY THE
SECRETARY OF THE NAVY.

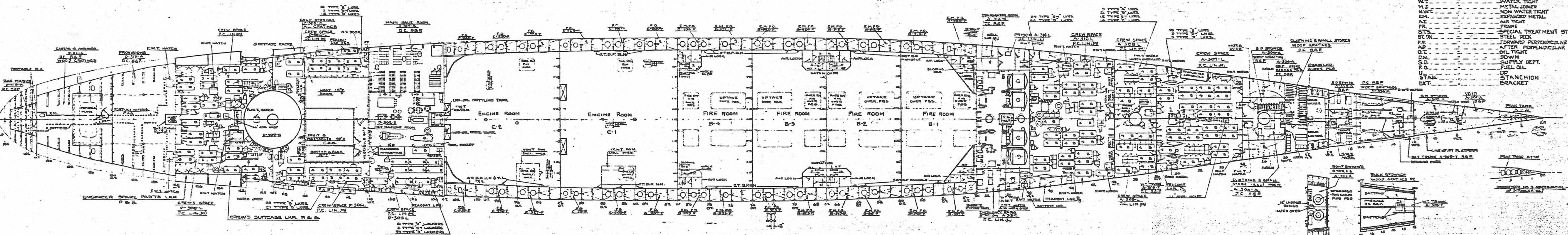




- ABBREVIATIONS**
- F.P. = FORWARD PERPENDICULAR
 - A.P. = AFT PERPENDICULAR
 - ALC. = ALUMINUM CORRUGATED
 - ALP. = ALUMINUM PULVER
 - AL. = ALUMINUM
 - ALJ. = ALUMINUM JOINTER
 - LN. = LINOLEUM
 - VL. = VERTICAL LADDER
 - P.S. = PORT & STARBOARD
 - B.H. = BULK HEAD
 - B.P. = BARE & PAINTED
 - R.W.T. = RAISED WATER TIGHT
 - N.W.T. = NON WATER TIGHT
 - WT. = WATER TIGHT
 - AT. = AIR TIGHT
 - M.H. = MAN HOLE
 - ST.S. = SPECIAL TREATMENT STEEL
 - A.G. = ARMOR GRATING
 - D. = DOWN
 - S.R.M. = STATE ROOM
 - H.R. = HOSE RACK
 - F.P. = FIRE PLUG
 - G.T. = GAS TIGHT
 - F.T. = FUME TIGHT
 - SW. = SLIDING WINDOW
- M.B. = MAIL BOX
TR. = TRANSOM

THE ABOVE ASSIGNMENT OF STATEROOMS
HAS BEEN APPROVED BY THE
SECRETARY OF THE NAVY.

ABBREVIATIONS			
HR	HOSE RACK	B.S.P.	BARRELS PAINTED
F.P.	FIRE PLUG	VL	VERTICAL LADDER
EM.F.	EMERGENCY FUEL OIL	P.S.	PORT & STARBOARD
A.T.B.R.M.	ALIGHT SOLID PL. BRIGADE	B.H.D.	BULK HEAD
		ALUM.	ALUMINUM
		AL.P.	ALUMINUM PLASTER
		AL.J.	ALUMINUM JOINER
		AL.C.	ALUMINUM CORRUGATED
		F.W.T.	FLUSH WATER TIGHT
		R.W.T.	RAISED WATER TIGHT
		W.T.	WATER TIGHT
		M.J.	METAL JOINER
		N.W.T.	NON WATER TIGHT
		EM.	EXPANDED METAL
		AT	AIR TIGHT
		FR.	FRAME
		STS	SPECIAL TREATMENT STEEL
		ST.DK.	STEEL DECK
		P.P.	FORWARD PERPENDICULAR
		AP	AFTER PERPENDICULAR
		O.T.	OIL TIGHT
		D.N.	DOWN
		S.D.	SUPPLY DEPT.
		F.O.	FUEL OIL
		U	UP
		STAN.	STANCHION
		BKT.	BRACKET



ABBREVIATIONS

OT	--- DENOTES ---	OIL TIGHT
WT	---	WATER TIGHT
NWT	---	NON-WATER TIGHT
BHD	---	BULKHEAD
EM & EMER	---	EMERGENCY
RES	---	RESERVE
LONG. & LONG'L	---	LONGITUDINAL
VL	---	VERTICAL LADDER
WL	---	WATER LINE
V.K.	---	VERTICAL KEEL
FO	---	FUEL OIL

