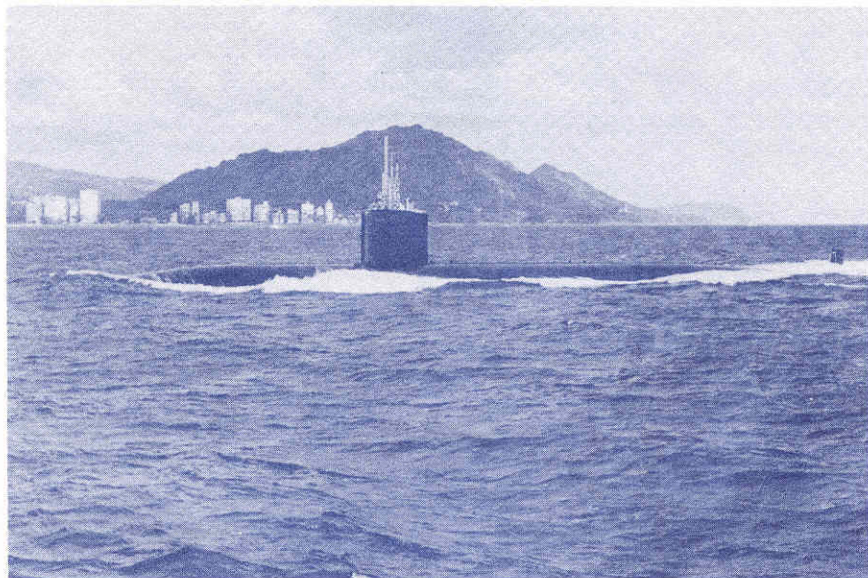




INACTIVATION

USS OMAHA (SSN 692)



**NAVAL SUBMARINE BASE
PEARL HARBOR, HAWAII**

16 DECEMBER 1994

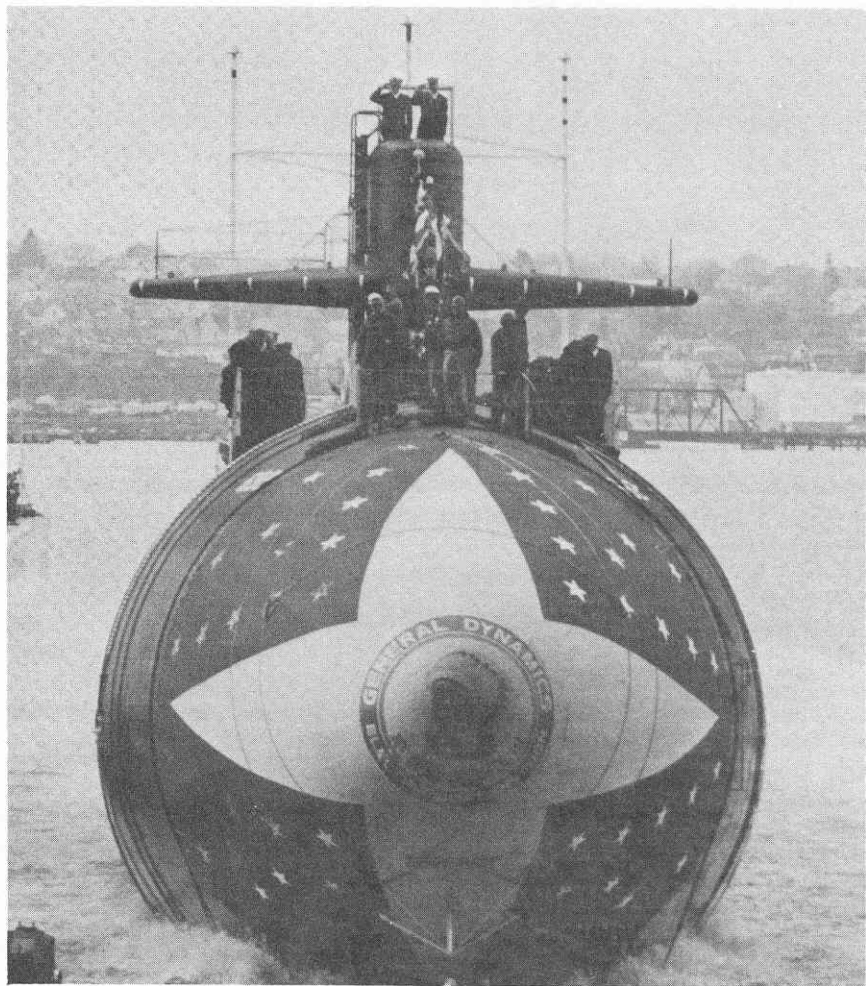


THE INACTIVATION CEREMONY

The inactivation ceremony marks the end of the service life of a ship as a unit of the operating forces of the United States Navy. At the moment that the commissioning pennant was initially broken, on 11 March 1978, USS OMAHA (SSN 692) became the responsibility of the Commanding Officer who, together with his crew, had the duty of making and keeping her ready for any service required by our nation, whether we be at peace or war. When the commissioning pennant is struck for the last time, USS OMAHA (SSN 692) will join her predecessors, the SLOOP OMAHA and LIGHT CRUISER OMAHA, as ships which have completed their gallant service to our nation.

THE COMMISSIONING PENNANT

The commissioning pennant is believed to date from the 17th century, when the Dutch were at war with the English. Dutch Admiral Maartin Tromp hoisted a broom at his masthead to symbolize that he had swept the British from the Dungeness. The following year British Admiral William Blake hoisted a horsewhip to his masthead, indicating his intention to chastise the Dutch. The victorious British thus set the precedent for a long, narrow, commissioning pennant to symbolize the original horsewhip as the distinctive mark of a ship of war.



☆

USS OMAHA SSN 692

☆

NUCLEAR POWERED ATTACK SUBMARINE

KEEL LAID JANUARY 27, 1973 AT ELECTRIC BOAT DIVISION OF GENERAL DYNAMICS
BY
MRS. ROMAN L. HRUSKA

"MAY THE STRENGTH OF OUR NATION AND OUR DESIRE FOR WORLD
PEACE BE AS DEEP AS THE SEAS WHICH THE USS OMAHA WILL PROBE.
MAY SHE NEVER FIRE IN ANGER NOR BE ANGERED BY FIRE."

☆

THE HONORABLE ROMAN L. HRUSKA
UNITED STATES SENATOR FROM NEBRASKA

☆

INACTIVATION PROGRAM

ARRIVAL OF OFFICIAL PARTY

INVOCATION

Lieutenant (Junior Grade) Jerome A. Hinson, CHC, USN
(Military Personnel Remain Covered)

INTRODUCTION

Commander Edward Payne Kilbourn, USN
Commanding Officer USS OMAHA (SSN 692)

REMARKS

Rear Admiral J. M. Barr, USN
Commander Submarine Force
U.S. Pacific Fleet

INACTIVATION

BENEDICTION

Lieutenant (Junior Grade) Jerome A. Hinson, CHC, USN

DEPARTURE OF OFFICIAL PARTY

MUSIC

CINCPACFLT Band

COMMANDER SUBMARINE FORCE, U.S. PACFLT

**Rear Admiral
JON MICHAEL BARR
United States Navy**



A native of New Jersey, Rear Admiral Barr graduated from the U.S. Naval Academy in 1961. After graduation, he completed nuclear power training and attended Submarine School in Groton, Connecticut.

Rear Admiral Barr reported to USS SNOOK (SSN 592) in January 1963, serving in Operations, Engineering and Weapons Departments. Following duty on SNOOK, Rear Admiral Barr was an instructor for two years at the Naval Nuclear Power School, Mare Island, California.

In 1968, Rear Admiral Barr reported to USS TECUMSEH (SSBN 628) and served as Navigator and Operations Officer. In April 1972, he reported to USS BARB (SSN 596) as Executive Officer. Rear Admiral Barr assumed command of the Naval Nuclear Power School, Bainbridge, Maryland in 1974, and moved the school to Orlando, Florida in 1975.

Rear Admiral Barr took command of USS SCULPIN (SSN 590) in November 1977. In November 1979, he was assigned as prospective Commanding Officer of USS BOSTON (SSN 703). The ship was commissioned in January 1982. Rear Admiral Barr served as Commanding Officer of USS OHIO (SSBN 726) (BLUE) from February 1983 to August 1984. Following command of OHIO (BLUE), he served as Commander, Submarine Squadron SEVENTEEN, the Navy's first operational Trident submarine squadron, and commanded Submarine Group NINE as additional duty from July to September 1985.

From March 1986 to January 1988, Rear Admiral Barr served as Deputy Director of the Attack Submarine Division in the Office of the Assistant Chief of Naval Operations (Undersea Warfare). Following selection for flag rank in December 1987, he was assigned as Deputy Director for Operations, National Military Command Center. In July 1989, he was named Deputy Assistant Secretary for Military Application, Office of Defense Programs, U. S. Department of Energy. From July 1991 to July 1993, Rear Admiral Barr served as Commander, Navy Recruiting Command.

Rear Admiral Barr assumed duties as Commander Submarine Force, U.S. Pacific Fleet on 30 July 1993.

Rear Admiral Barr's awards include the Defense Distinguished Service Medal, Navy Distinguished Service Medal, Legion of Merit (with Gold Star), Defense Meritorious Service Medal, Navy Meritorious Service Medal (with Gold Star) and several other personal and campaign awards.

Rear Admiral Barr is married to the former Marcia Elizabeth Redston of Upper Montclair, New Jersey. They have three daughters, Susan, Diana and Jillian, and two grandchildren, Lindsay and Julia.

COMMANDING OFFICER

**Commander
E. PAYNE KILBOURN
United States Navy**



Commander Kilbourn was raised in suburban Philadelphia. He graduated from the United States Naval Academy in 1976 with a Bachelor of Science in Naval Architecture. After commissioning, he was assigned as a sailing coach at the Naval Academy, and campaigned ocean sailing yachts offshore and on Chesapeake Bay until December 1976. He completed nuclear power and submarine training in April 1978.

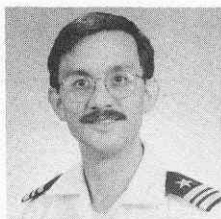
From 1978 to 1981, Commander Kilbourn served as Communicator, Main Propulsion Assistant, and Weapons Officer on USS STURGEON (SSN 637). Following a two year tour as a Staff Instructor and Material Officer at the S3G prototype, he served as Engineer Officer on USS NARWHAL (SSN 671) from 1984 to 1987. In September 1987, Commander Kilbourn reported to the Joint Staff, where he served as a conventional naval and air/land forces analyst until October 1989.

Commander Kilbourn served as Executive Officer of USS JACK (SSN 605) during deactivation, then as Executive Officer of USS BIRMINGHAM (SSN 695) from July 1990 to November 1991. Commander Kilbourn served as Assistant, and later Deputy Commander of Submarine Squadron SEVEN from December 1991 to March 1993. Commander Kilbourn assumed command of USS OMAHA (SSN 692) in November 1993.

Commander Kilbourn's sea duty included deployments to the Mediterranean, North Atlantic, Western Pacific, and Northern Pacific. Commander Kilbourn was awarded a Master of Arts in Political Science (Legislative Affairs) from George Washington University in 1991.

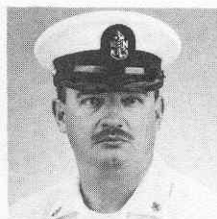
Commander Kilbourn is authorized to wear the Defense Meritorious Service Medal, Meritorious Service Medal, the Navy Commendation Medal (seven awards), the Joint Service Achievement Medal, and the Navy Achievement Medal (three awards).

Commander Kilbourn is married to the former Valorie Bevard of Rock Falls, Illinois. They have two grown sons who reside in Charleston, South Carolina.



LCDR C. W. BOOTH
EXECUTIVE OFFICER

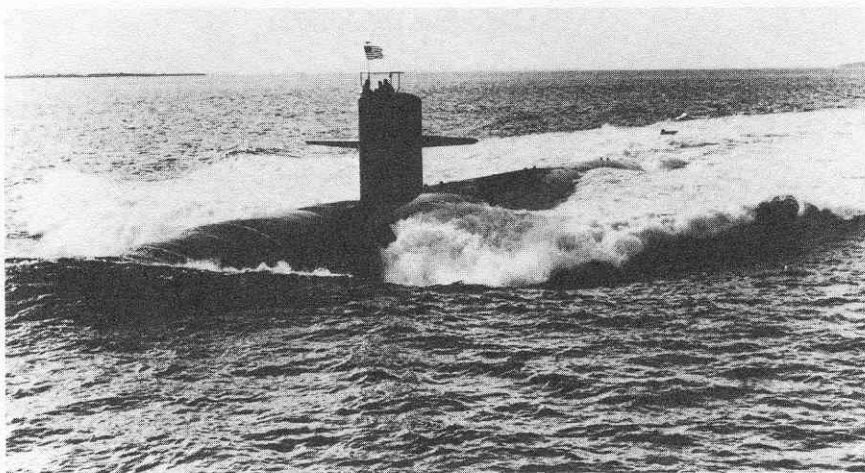
USS OMAHA (SSN 692)



QMCM(SS) M. L. DUFFELL
CHIEF OF THE BOAT

STATISTICAL DATA

KEEL LAID	27 JANUARY 1973	
LAUNCHED	21 FEBRUARY 1976	
COMMISSIONED	11 MARCH 1978	
SPONSORED BY	MRS. ROMAN L. HRUSKA	
LENGTH	360 FEET	
DISPLACEMENT	SURFACED	6090 TONS
	SUBMERGED	6927 TONS
HULL DIAMETER	33 FEET	
DRAFT	32 FEET	
SPEED	IN EXCESS OF 20 KNOTS	
DIVING DEPTH	GREATER THAN 400 FEET	
COMPLEMENT	OFFICERS	15
	CHIEF PETTY OFFICERS	12
	E-6 AND BELOW	119
	TOTAL	146
ARMAMENT	MK48 TORPEDOES	
	ANTI-SHIP	
	ANTI-SUBMARINE	
	HARPOON ANTI-SHIP CRUISE	
	MISSILE	
	TOMAHAWK ANTI-SHIP CRUISE	
	MISSILES	
	TOMAHAWK LAND ATTACK CRUISE	
	MISSILES	
ENDURANCE	LIMITED ONLY BY FOOD STORES, USUALLY 90 DAYS	

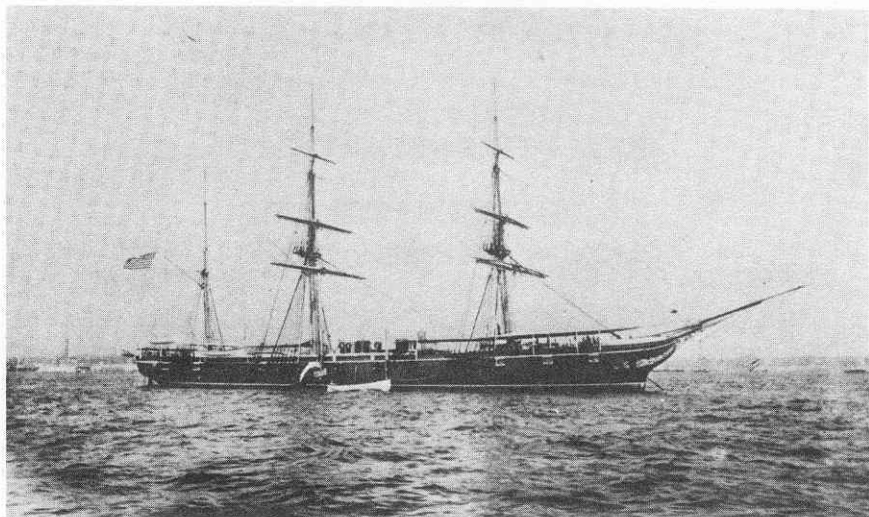


THE FAST ATTACK SUBMARINE USS OMAHA (SSN 692)

The high speed nuclear powered attack submarine named for the city of Omaha, Nebraska, was commissioned March 11, 1978, at the Naval Submarine Base, New London, Groton, Connecticut.

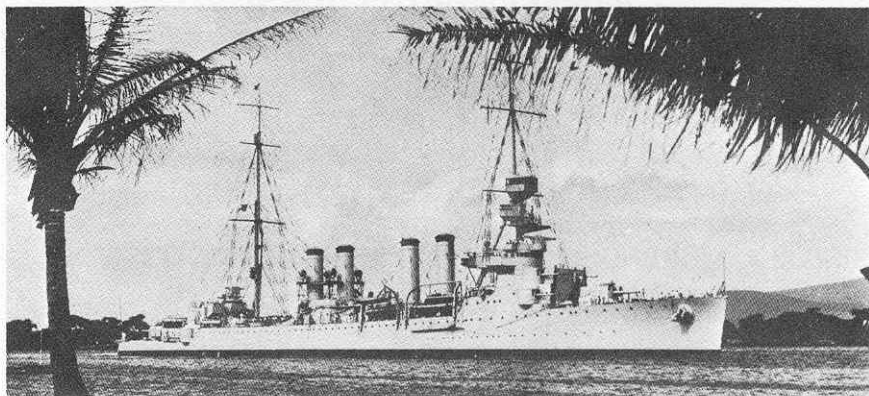
The third ship to bear the city's name, USS OMAHA brings to the fleet the virtually unlimited endurance of her nuclear propulsion plant, the most advanced Sonar and Fire Control Systems on board submarines today, and an impressive underwater weapons launch system capable of firing MK48 Torpedoes and Harpoon and Tomahawk Cruise Missiles. OMAHA is capable of sustained high speed operations in support of Carrier Task Forces of the United States Navy, as well as independent operations and special warfare assignments that are of critical importance to national security.

Following commissioning, USS OMAHA completed her initial shakedown in the Atlantic. She completed an inter-fleet transfer to the Pacific in early September 1978. She has since completed eight extended deployments to the Western Pacific including operations in the Indian Ocean during two of those deployments. USS OMAHA completed her first overhaul at Pearl Harbor Naval Shipyard in March 1987, and is currently operating as a unit of Submarine Squadron SEVEN, homeported in Pearl Harbor.



THE SCREW SLOOP USS OMAHA 1872- 1914

Commissioned on 12 September 1872, she is best known for her extraordinary service on the night of 8 February 1890 when she put ashore a detachment of officers and men to assist in fighting an extensive fire in the town of Hodogaya, Japan. She was struck from the U. S. Naval Register on 10 July 1914.



THE LIGHT CRUISER USS OMAHA (CL-4) 1923 - 1946 RETURNING TO PEARL HARBOR

Commissioned on 24 February 1923, she is best known for her gallant action on 6 November 1941. While on a Neutrality Patrol in the mid-Atlantic, OMAHA sighted a vessel displaying the name WILLMOTO of Philadelphia and flying an American flag. The ship aroused suspicion by her evasive actions and refusal to satisfactorily identify herself. OMAHA boarded the freighter which was in the process of scuttling and salvaged the vessel and rendered her safe. The freighter, as it turned out, was the German ship ODENWALD, and her capture was one of the great dramas of American Seamanship.

CREW ROSTER

EXECUTIVE DEPARTMENT

LCDR CHARLES W. BOOTH
QMCM(SS) MICHAEL L. DUFFELL

MEDICAL

HMI(SS) S. ROBINSON

SHIPS OFFICE

YN1(SS) J. W. HOLMES

YN3 H. SALINAS, JR.

YN3 A. C. PEREIRA

SUPPLY/FOOD SERVICE

LT OMAR S. DY, SC

SUPPLY

SKI(SS) A. MORENO

SKSN(SS) J. M. GORECKI

SKI(SS) T. S. RAINEY

SKSN D. A. SAPP

FOOD SERVICE

MSC(SS) J. K. CREAN

MS3(SS) R. A. KNIGHT

MS1(SS) E. C. HILL

MS3(SS) W. S. RITTER III

MS2(SS) M. L. PAYNE

MSSN(SS) J. B. BENJAMIN

MS2(SS) C. YAMAGUCHI

WEAPONS

LT ANTHONY K. GREEN
LT DANIEL L. GORDILLO

FIRE CONTROL

FT1(SS) G. H. EVANS	FT2(SS) P. T. SEACREST
FTI(SS) R. L. GOODNIGHT	FT3(SS) P. D. BUTLER
FT1(SS) K. M. KLAG	FT3(SS) R. J. BYRD
FT2(SS) B. W. DOLLEY	FT3(SS) C. R. WOJCIK

TORPEDO

LT MARTIN WHITFIELD	TM3(SS) C. CAMERON
TMCS(SS) M. L. MCCREARY	TM3(SS) WINDBIGLER
TM1(SS) A. K. ELADHARI	TMSN(SS) C. C. BRIGGS
TM2(SS) A. D. SHRIVES	

SONAR

STSCS(SS) A. S. TUFU	STS3(SS) A. L. JACOBS
STSI(SS) R. DINGMANN	STS(SS) L. N. JAMISON
STS1(SS) T. L. KOCH	STS3(SS) C. A. JOHNSON
STS2(SS) A. E. DAVIS	STS3(SS) R. KNOWLES
STS2(SS) B. THURMAN	STS3(SS) R. A. MORITZ
STS3(SU) B. A. CHOATE	STSN(SU) J. D. PARKER

DECK

STSCS(SS) A. S. TUFU	SA(SU) M. J. GIBSON
STS2(SS) B. THURMAN	SA(SU) S. A. STAPLES

NAVIGATION/OPERATIONS

LCDR CHRISTOPHER R. VANMETRE

LT DANIEL L. GORDILLO

ELECTRONIC MATERIAL

LT M. E. DOUGLASS

ETCS(SS) W. C. HARPER

ETI(SS) C. E. GUSTAVEL

ETI(SS) R. J. OLBREI

ET3(SS) C. W. BENTON

ET3(SS) D. J. HADIK

ET3(SU) M. L. SCHULTZ

COMMUNICATIONS

LT DENNIS C. CHANG

RM1(SS) J. R. MILLER

RM1(SS) M. A. CRANE

RM2(SS/DV) HARSHBARGER

RM3(SS) P. H. CORNELL

RM3(SS) J. E. SAVAGE

RM3(SS) W. H. DRYDEN

NAVIGATION

LCDR C. R. VANMETRE

QMC(SS) W. K. TURNER

QM1(SS) T. S. OIEN

QM2(SS) D. G. LAKE

QM3(SS) C. R. BOWEN

SN(SS) J. C. COLLINS

INTERIOR COMMUNICATIONS

ICC(SS) W. HALL

ICI(SS) D. J. BRANT

IC2(SS) M. J. GEOSITS

IC3(SU) E. T. FAHL

ICFN(SU) C. S. SLOWIK

ICFN(SS) B. E. LEPLEY

ENGINEERING

LCDR CHARLES P. MELCHER

MACHINERY

LTJG STEVEN BALMER
MMC(SS) C. M. HENVIT
MM1(SS) S. D. TERRY
M:MI(SS) C. E. YOUNG
MMI(SS) J. R. KRAFT
MMI(SS) L. JACOBSON
MM2(SS) A. L. BORUCH
MM2(SS) S. M. SPROUSE

MM2(SS) J. K. VOGLER
MM3(SS) R. J. BOOS
MM3(SS) N. E. DORN
MM3(SU) C. HELLAND
MM3(SS) W. JOHNSON
MM3(SS) T. L. MALISE
MM3(SS) R. W. MOORE
MM3(SS) S. E. MOSES

ELECTRICAL

LT LYLE HOAG
EMC(SS) R. S. COFFEE
EMC(SS) B. K. RITCHIE
EM1 (SS) D. DUNLAVY
EM1(SS) R. BRISCOE
EM1(SS) R. A. LENTZ

EM2(SS) BOROWSKI
EM2(SS) J. D. FRENCH
EM2(SS) R. WHEELER
EM3(SS) G. LUGO
EM3(SS) L. F. WEISE

REACTOR CONTROLS

LTJG G. POUNDER
ETC(SS) R. SINGER
ET1(SS) M. A. GOLDYN
ET1 (SS) P. TROSTER
ET2(SS) A. ESPINOSA

ET2(SU) R. S. FRUTH
ET2(SS) J. MOELLER
ET2(SS) J. W. POWERS
ET2(SS) WITHERSPOON
ET3(SS) C. MARTIN

REACTOR LABORATORY

LT JAMES L. TUPPER
MM1(SS) R. D. BROWN
MM2(SS) G. S. CROSS
MM2(SS) D. LEE

MM2(SS) R. BRADDOCK
MM2(SS) M. P. SCHAEFER
MM3(SU) C. A. DEDONATO

AUXILIARY

LT DEREK CRIBLEY

MMCS(SS) T. HREN

MMI(SS) J. J. EVANS

MMI(SS) C. J. DRUMMOND

MM1(SS) C. E. BRIDGE

MM2(SS) D. J. FINGER

MM2(SS) J. P. DEVOS

MM2(SS) T. M. FANELLI

MM2(SS) M. W. FOSTER

MM3(SS) J. B. AUBURGER

MM3(SU) C. L. CUTTS

MM3(SU) P. H. WHITE

MMFN(SU) D. J. JACKSON

USS OMAHA (SSN692)

COMMANDING OFFICERS

<i>CDR Ted A. Hamilton</i>	<i>2 Jun 75 - 21 Oct 78</i>
<i>CDR Robert P. Greenman</i>	<i>21 Oct 78 - 19 Feb 82</i>
<i>CDR Bartlett L. Clark</i>	<i>19 Feb 82 - 19 Dec 86</i>
<i>CDR John B. Padgett, III</i>	<i>19 Dec 86 - 19 Dec 88</i>
<i>CDR Roger R. Sherwood</i>	<i>19 Dec 88 - 6 Sep 91</i>
<i>CDR Robert N. Pohtos</i>	<i>6 Sep 91 - 12 Nov 93</i>
<i>CDR Edward Payne Kilbourn</i>	<i>12 Nov 93 - Present</i>

