

**United States Ship  
BILLFISH (SSN 676)**



**WELCOME ABOARD**

## **LIVING ACCOMMODATIONS**

Berthing is assigned visitors embarking upon their arrival. Please use only the berth assigned you so that you can be located if necessary.

Heads and washrooms are located in the Operations Compartment Middle Level. Before using a head for the first time please consult a member of the crew for flushing procedures. Do not discard any solid object, no matter how small into the water closet as it may foul the seat of the overboard discharge valve.

Showers may be taken anytime, but because the number of shower facilities is very limited, showers should be taken as expeditiously as possible. There is no restriction on water. However, the ship's water making capacity, however large, precludes the "wasting" of water.

Messing arrangements have been made for you, and you have been assigned a specific area and time to eat. All meals must be served in shifts so you are requested to be punctual in your arrival for meals and not to linger over coffee after finishing. Meals will not be announced but will be served on time. Smoking is normally permitted throughout the ship except in bunks, bilge areas, or in the vicinity of pyrotechnics or oxygen stations, however, the smoking lamp may be put out for certain evolutions.

## **CALLS**

For embarked visitors, calls are made by the Duty Steward in the Wardroom and the Torpedo Room Watch in the Operations Compartment Lower Level. Any of these persons will ensure that a visitor is called at any particular time he may designate.



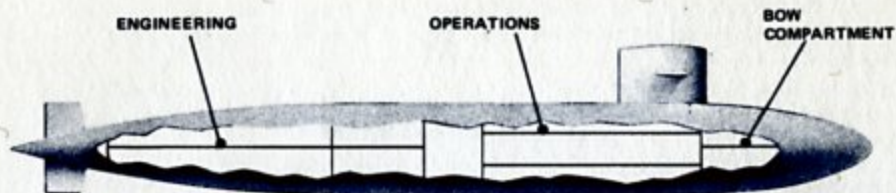
## *The Sponsor*



**MRS. EARLE G. WHEELER**

Frances Howell Wheeler, wife of the former Chairman of the Joint Chiefs of Staff, is a native of Brooklyn, N.Y., and Old Greenwich, Connecticut. She married Earle G. Wheeler upon his graduation from West Point and has been "soldiering" ever since. Mrs. Wheeler enjoys being a housewife most of all, having now devoted two-thirds of her life to that occupation.

The Wheelers presently reside in Martinsburg, West Virginia, where they moved upon General Wheeler's retirement in July, 1970. They have one son and two grandsons.



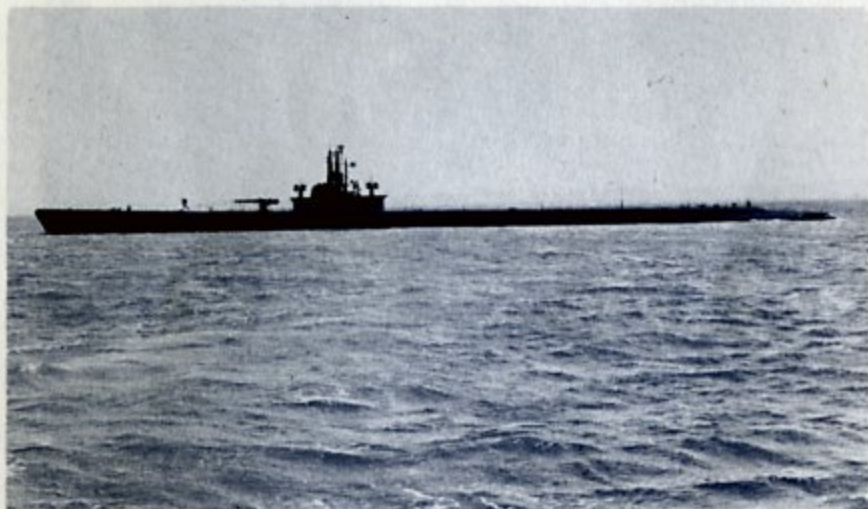
### COMPARTMENTATION

**ENGINEERING**—These spaces provide for the turbines which produce electrical power and the propulsion turbines which drive the ship. The propulsion turbines are accompanied by reduction gears which transmit the power to the shaft, ultimately turning the screw to give motion to the ship. The entire Engineering Department is permeated with steam and various fluid systems to supply the main and auxiliary components of the engineering system.

**OPERATIONS**—This area, between the bow compartment and engineering spaces, provides space for navigational equipments, ship control, and various habitability areas. The radio room, sonar room, officers staterooms, wardroom, and ships offices are also contained herein. The lower level of the operations compartment is primarily occupied by the torpedo room.

**BOW COMPARTMENT**—This portion of the boat is primarily a habitability space sleeping 67 men. Quarters for the chief petty officers are found here as are the diesel generator and the forward escape trunk.





## *Heritage*

### USS BILLFISH (SS 286)

Built by the Portsmouth Naval Shipyard, Portsmouth, New Hampshire, USS BILLFISH (SS 286) was launched on 12 November 1942, under the sponsorship of Mrs. Lewis S. Parks. The BILLFISH was commissioned on 20 April 1943 with Lieutenant Commander Frederick C. Lucas as her first Commanding Officer.

BILLFISH commenced her first war patrol in August 1943 and completed eight war patrols. She is officially credited with sinking or damaging 22,450 tons of enemy shipping. She earned seven Battle Stars on the Asiatic-Pacific Area Service Ribbon for war patrols she conducted during the period 12 August 1943 to 15 August 1945.

BILLFISH was decommissioned at Portsmouth Navy Yard on 1 November 1946.



KEEL LAYING

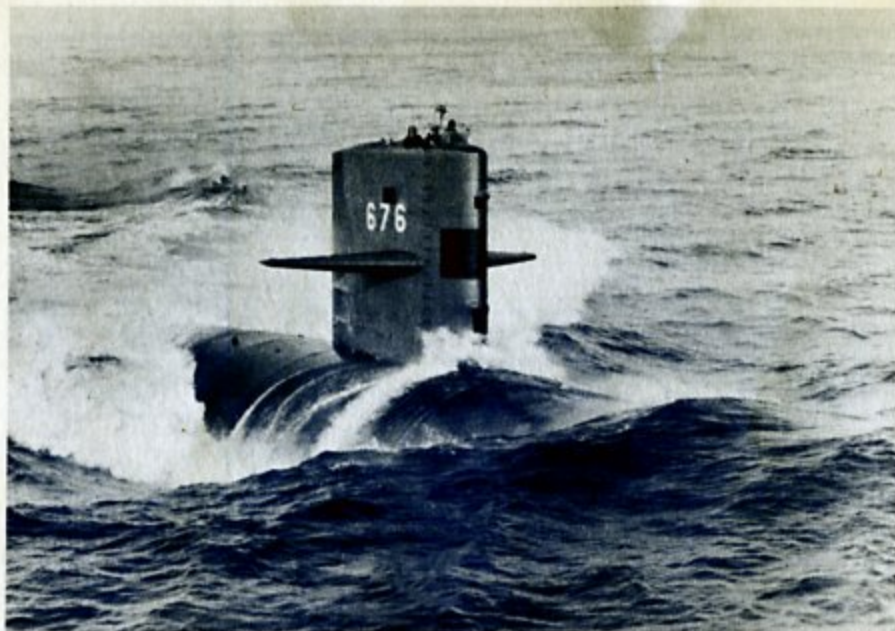


LAUNCHING



AT SEA





### **PROFILE OF THE USS BILLFISH (SSN 676)**

The USS BILLFISH (SSN 676) is a nuclear attack submarine of the STURGEON class. She is 292 feet long with a beam of 32 feet and a submerged displacement of 4600 tons. Her keel was laid on 20 September 1968 and she was launched 1 May 1970. On 12 March 1971 she became the 91st nuclear submarine to enter the Fleet and the 50th attack type. Her assignment upon commissioning was to Submarine Development Group TWO in Groton, Connecticut.

BILLFISH is a streamlined, highly advanced, and maneuverable anti-submarine warfare platform which employs the best the industry can offer in three major areas.

First, she is powered by a pressurized water nuclear reactor propulsion plant which provides reliability, high power, and the ability to operate independent of the outside atmosphere for extended periods. In this power plant the reactor provides heat, which is transported to secondary water system by circulating pressurized water. The secondary water becomes steam, which operates turbines to provide propulsion and electric power.

Second, extensive design changes to the STURGEON class sonar system have produced a second generation sonar complex installed on BILLFISH. The new system is a key element of BILLFISH sophisticated electronic sensor suite, and will add substantially to the formidable hunter-killer capability already provided in earlier class ships.

Finally, BILLFISH carries the most advanced weapons available to the Submarine Force, including the SUBROC missile system which adds a potent attack capability. The computers to support and direct these weapons are

newly developed and extremely versatile, to complete the variety of tasks to which BILLFISH is assigned.

In order to provide maximum crew comfort for extended operations, the ship has extensive air conditioning equipment. Special atmospheric control equipment removes irritants from the air and maintains the proper balance of oxygen, carbon dioxide and other atmospheric constituents during prolonged submerged periods. Large distilling plants provide plenty of fresh water, and electrolytic oxygen generators allow the submarine to manufacture oxygen from sea water.

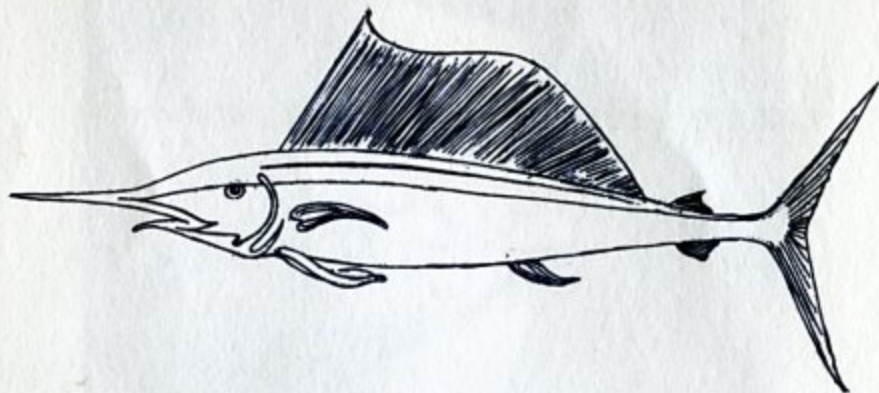
The increased speed (over 20 kts submerged), diving depth (over 400 feet) and maneuverability of today's attack submarine requires more reliable controls and quicker response on the operator's part. The BILLFISH's control room, and auxiliary machinery room indicate the complexity and compactness of her equipment.

By the nature of her mission, the modern fast attack submarine demands long hours and a high level of training of her crew. A modern messing facility, feeding 32 men at a time, and an adjoining activities space where the crew may pursue hobbies or read, provide a welcome break in the daily routine.





## The Billfish



Billfish is a name assigned to two distinct families of fish: the rounded bill (Istiophoridae) and the flat bill (Xiphiidae). Billfish not only have long, protruding, and sharp bills, but also grow to immense sizes. They tailwalk in frantic efforts to throw the hook and frequently spring from the water in great bounding leaps. They stun their prey, which usually consist of small, schooling fish, with swift, back-and-forth slashes of their tail. Putting their bill to use, they have been known to ram boats and pierce up to three-inch planking. Marlin, sailfish, and swordfish are members of the Billfish families.

Another Billfish is a member of the Needle-Fish Family. It is scientifically known as "*strongylura marinus*" and is commonly found off the U.S. Atlantic & Gulf Coasts from Maine to Texas. Its name is derived from the long protruding bill. The Billfish is a voracious feeder, a good game and food fish, and grows to a length of four feet at maturity.

## **GENERAL INFORMATION**

### **EMERGENCIES**

In the event of an emergency, stand fast but clear of all passageways and watertight doors so that ship's crew may be free to proceed to the scene. The crewman in charge of the compartment will direct your movements and keep you informed as soon as possible.

### **CAUTION**

Do not attempt to operate any equipment, twist knobs, flip switches, or turn any valves without the assistance of a crew member. Please observe all warning signs.

### **MEDICAL FACILITIES**

The ship has a Hospital Corpsman available at all times and he should be consulted for any illness or injury that may occur during the cruise. It is recommended that persons susceptible to motion sickness obtain medication prior to getting underway. The Hospital Corpsman may be contacted through the Chief of the Watch in Control by dialling 0 on any Dial Telephone.

### **SECURITY**

Most features of the ship are of a classified nature. In addition, Sonar Control, Radio, ECM Room, Sonar Equipment Space, Nucleonics Laboratory, and all spaces aft of the Operations Compartment are security areas and only authorized personnel are permitted. Information concerning speed depth, weapons, fire control, sonar, ECM and the propulsion plant are classified.

### **ORDERS**

If you are under military orders, please turn your orders in to the Yeoman in the ship's Office directly aft of the Operations Compartment access ladder. Your orders will be endorsed and ready for you to pick up at the end of your visit.



USS BILLFISH (SSN-676)  
FLEET POST OFFICE  
NEW YORK, NEW YORK 09501



NAME: \_\_\_\_\_

BERTHING ASSIGNMENT: \_\_\_\_\_

MEAL HOURS: \_\_\_\_\_

\_\_\_\_\_  
\_\_\_\_\_  
\_\_\_\_\_  
\_\_\_\_\_

INFORMATION: \_\_\_\_\_

\_\_\_\_\_  
\_\_\_\_\_  
\_\_\_\_\_  
\_\_\_\_\_

