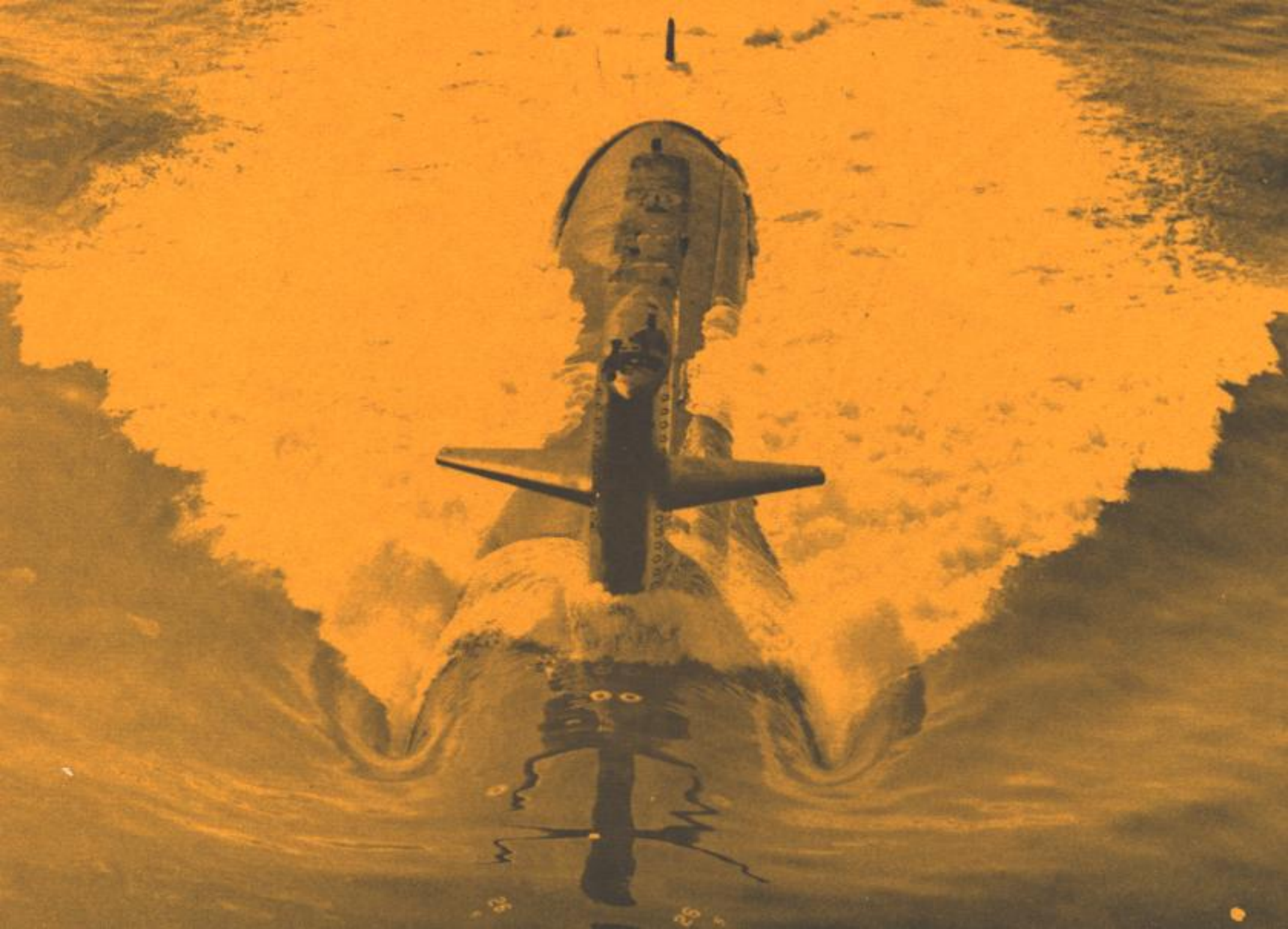


WELCOME ABOARD



NUCLEAR ATTACK SUBMARINE



FACTS ABOUT USS SPADEFISH (SSN 688)

USS SPADEFISH is named for a large (up to 3 feet) and fast member of a family of reef dwelling tropical fish. It is an aggressive carnivorous fish characterized by barred black and white markings. The USS SPADEFISH (SSN 668) is a nuclear fast attack submarine of the STURGEON class. She is 292 feet long with a beam of 32 feet and a submerged displacement of about 4600 tons. Built at Newport News Shipbuilding and Drydock Company her keel was laid on 21 December 1966 and she was launched on 15 May 1968. On 14 August 1969 she was commissioned and joined Submarine Squadron SIX at Norfolk, Virginia.

SPADEFISH's primary wartime mission is to detect, track and destroy enemy submarines. In order to achieve this capability she has been equipped with an elaborate sonar system (BQQ-5), a highly advanced installation capable of searching for and detecting targets on the surface and submerged at great ranges. To utilize the increased capabilities of her sonar, SPADEFISH has installed a modern computer - controlled submarine weapon system (MK-117), designed to permit the attacking and sinking of submarines and surface ships at great distances. Her weapons system is capable of firing the latest in the United States' arsenal of submarine launched weapons including the MK-48 torpedo, the SUBROC and HARPOON missiles.

SPADEFISH combines the endurance and environmental independence of nuclear power with deep submergence, high speed, quietness, and the most advanced weapons and electronic capabilities. She and her sister ships are the Navy's most effective anti-submarine weapon.

SPADEFISH's history has included participation in several fleet exercises and an independent operation for which she was awarded the Navy Unit Commendation in 1970 and again, for a noteworthy effort, the Navy Meritorious Unit Commendation in 1971. In 1972 she was awarded the Submarine Division Sixty-Two Battle Efficiency "E". Undergoing her first overhaul in September 1973 - July 1974, she quickly reestablished her reputation as a superior ship by again being awarded the Meritorious Unit Commendation as a result of a Mediterranean Sea deployment in 1975. After participating in several anti - submarine fleet operations and independent operations, SPADEFISH was awarded the COMSUBRON SIX Battle Efficiency "E". In January 1978, she entered Newport News Shipbuilding and Drydock Company for her first refueling overhaul.

In July 1979, SPADEFISH returned to active service with SQUADRON SIX. After completing numerous post - overhaul tests and evaluations she deployed in March 1980 to the Mediterranean for five months. In May 1981 she made a very successful unsupported independent operation and as a result was awarded the Navy Unit Commendation. In March 1982 she participated in a new type of independent operation, the results of which have been considered completely successful and particularly significant.

Commanding Officer

Commander George P. Bardsley

Commander George P. Bardsley grew up in Rural New Jersey, attended Palo Alto Senior High School in California and received a Bachelor of Science degree in Mechanical Engineering from Stanford University in California. He was commissioned in March 1967 through the NROTC regular program.



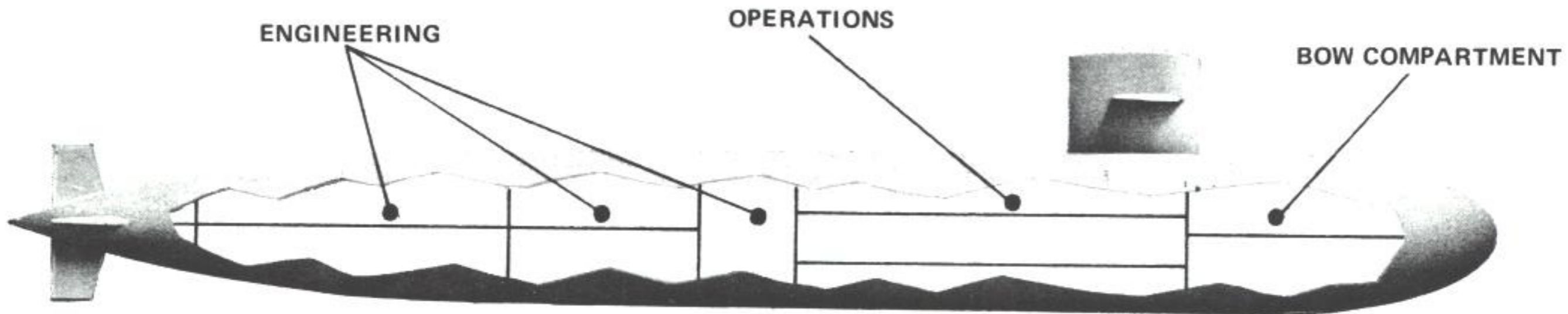
Following Nuclear Power Training at Bainbridge, Maryland and West Milton, New York and Officer Submarine School at Groton, Connecticut, he served two years in the Engineering Department of USS JOHN MARSHALL (SSBN 611) (BLUE). In November 1970 he reported to USS ARCHERFISH (SSN 678) Precommissioning Unit with subsequent assignments as Main Propulsion Assistant, Sonar Officer, Electronics Material Officer and Weapons Officer. He next served as Engineer Officer of USS BERGALL (SSN 667) from April 1973 through August 1976.

In September 1976 Commander Bardsley was assigned to the Office of Program Appraisal within the Office of the Secretary of the Navy as the plans, programs and budget analyst for submarine, communications, intelligence, navigation and strategic programs. From April 1979 through January 1982 he served as Executive Officer, USS SEAHORSE (SSN 669). After Prospective Commanding Officer Training, he in November 1982 assumed his current duties of Commanding Officer, USS SPADEFISH (SSN 668).

Commander Bardsley has been awarded the Meritorious Service Medal with Gold Star in lieu of second award and the Navy Commendation Medal. Additionally he is entitled to wear the Navy Unit Commendation Ribbon, the Meritorious Unit Commendation Ribbon, the Navy Expeditionary Medal, the National Defense Medal and the Sea Service Deployment Ribbon with two Bronze Stars.

Commander Bardsley, his wife, the former Patricia Anne Leddy of Cinnaminson, New Jersey and their three children, Nathan, Judy and Kit, reside in Virginia Beach, Virginia.

SHIP'S COMPARTMENTS



ENGINEERING – These spaces provide room for the pressurized-water type nuclear reactor, the steam turbine-generators which produce electrical power, and the propulsion turbines which drive the ship. The propulsion turbines are accompanied by reduction gears which transmit the power to the shaft, ultimately turning the screw to give motion to the ship. The engineering spaces are filled with complex electrical and fluid systems which support the main and auxiliary components of the propulsion plant.

OPERATIONS – This area, between the bow compartment and engineering spaces, provides space for navigational equipments, ship control, and various habitability areas. The radio room, sonar room, officers' staterooms, wardroom, and ship's offices are also located here. The lower level of the operations compartment is primarily occupied by the torpedo room.

BOW COMPARTMENT – This portion of the ship is primarily a habitability space and includes most of the crew's berthing. Quarters for the chief petty officers are found here, and a small machinery space houses the auxiliary diesel generator.

HISTORY of FIRST USS SPADEFISH (SS411)

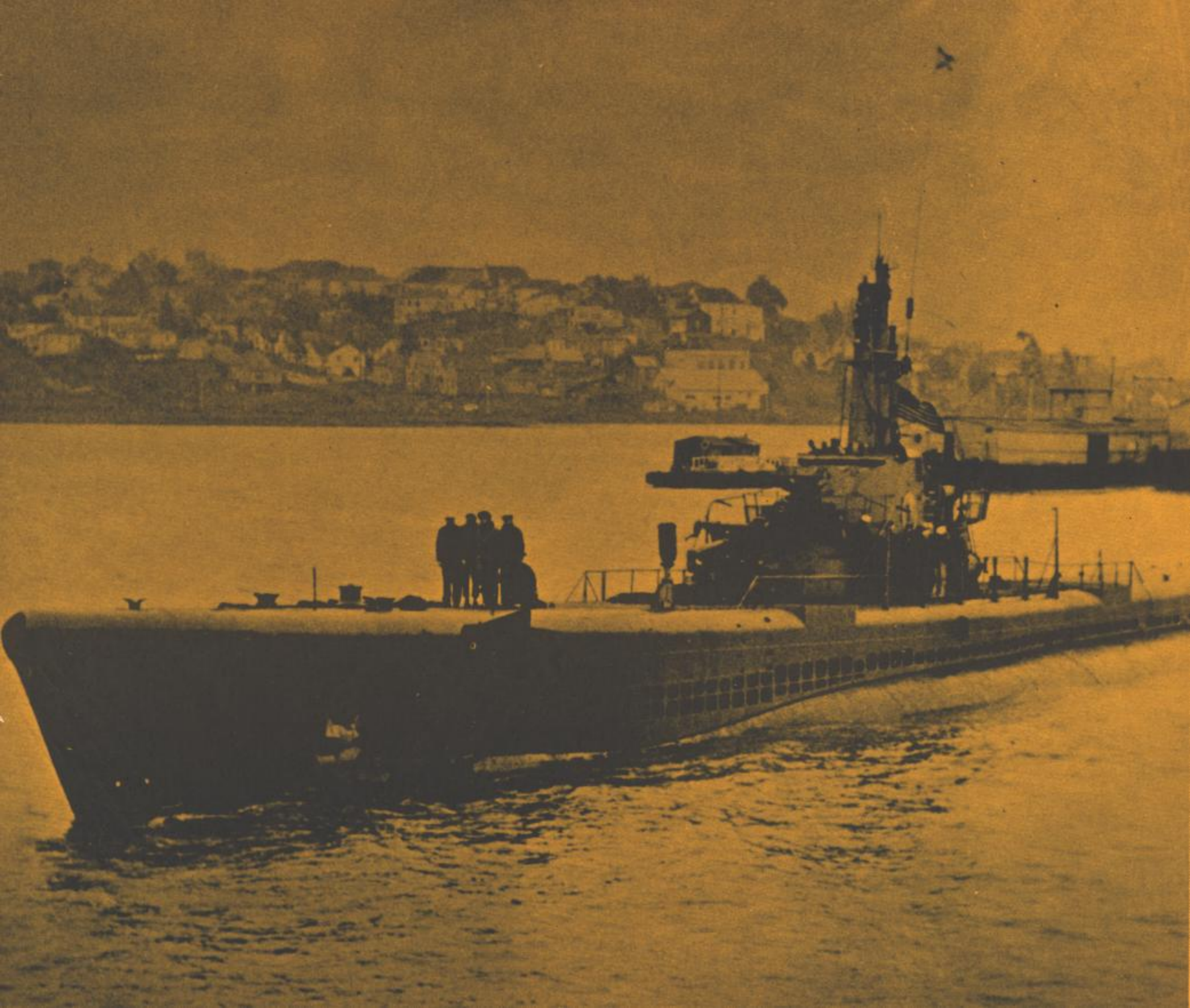
The original USS SPADEFISH was commissioned at Mare Island Naval Shipyard. Despite her late entry into World War II, she significantly assisted in achieving victory in the Pacific war area.

Under the command of Commander G. W. Underwood, SPADEFISH departed Pearl Harbor on 23 July 1944 for her first war patrol in company with PICUDA and REDFIN. The patrol got off to a resounding start on 19 August when SPADEFISH sunk the 9,589 ton ship TAMATSU MARU. Success continued with the wolf pack establishing a new record of 66,000 tons sunk in a single patrol. SPADEFISH personally downed six ships for a total of 31,542 tons during this patrol.

Her second patrol was highlighted by the sinking of the Japanese escort aircraft carrier JINYO. By the end of her fifth and last patrol of World War II, SPADEFISH had sent twenty-five enemy ships totalling 91,200 tons to the bottom.

USS SPADEFISH received the Presidential Unit Citation for extraordinary heroism during her first and second patrols.

USS SPADEFISH (SS411) was decommissioned on 3 May 1946 at her birthplace in Mare Island, California.





WELCOME ABOARD

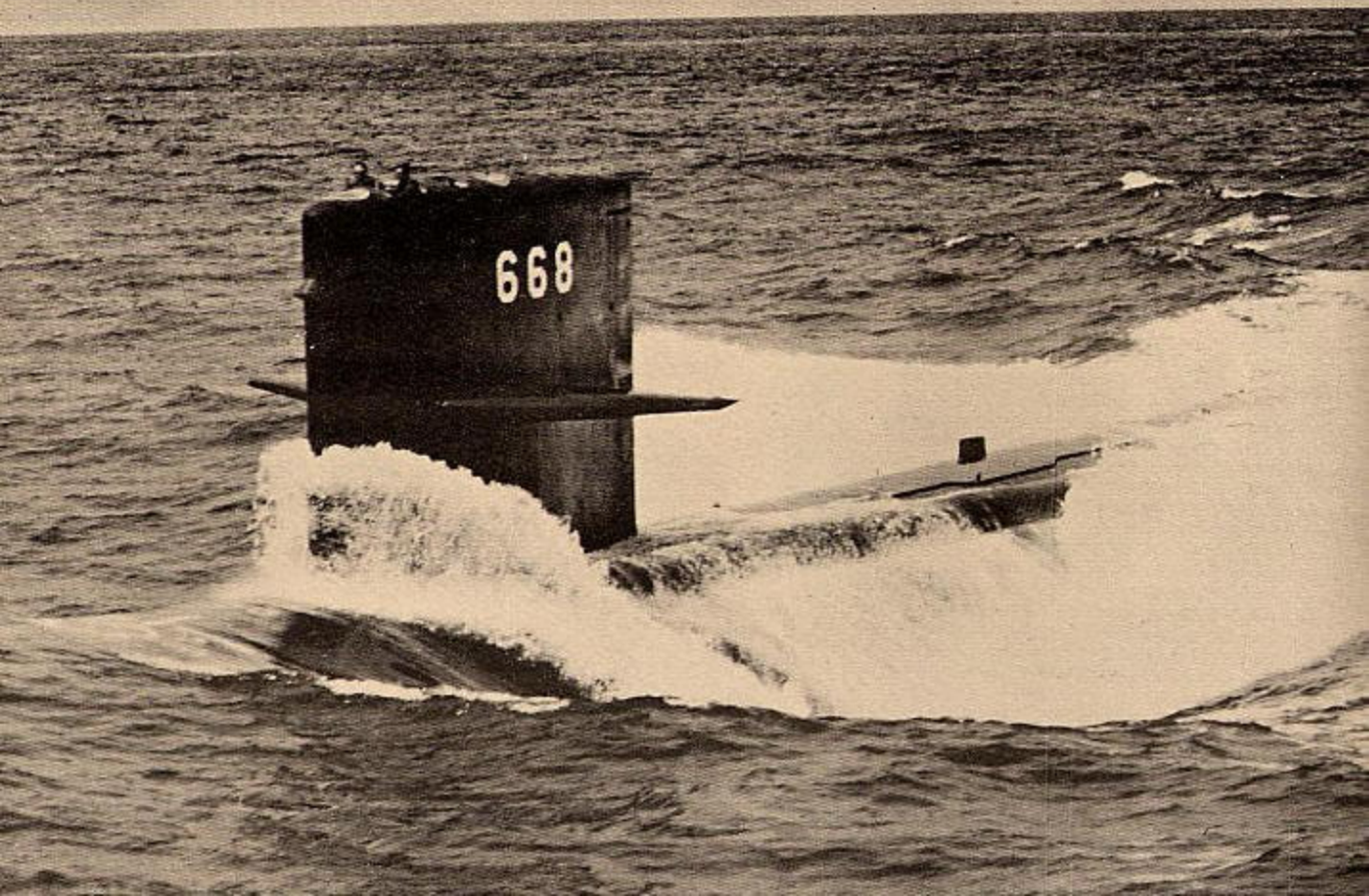
USS

SPADEFISH

SSN 668

NUCLEAR ATTACK SUBMARINE





668

FACTS ABOUT USS SPADEFISH (SSN668)

USS SPADEFISH is named for a large (up to 3 feet) and fast member of a family of reef dwelling tropical fish. It is an aggressive carnivorous fish characterized by barred black and white markings.

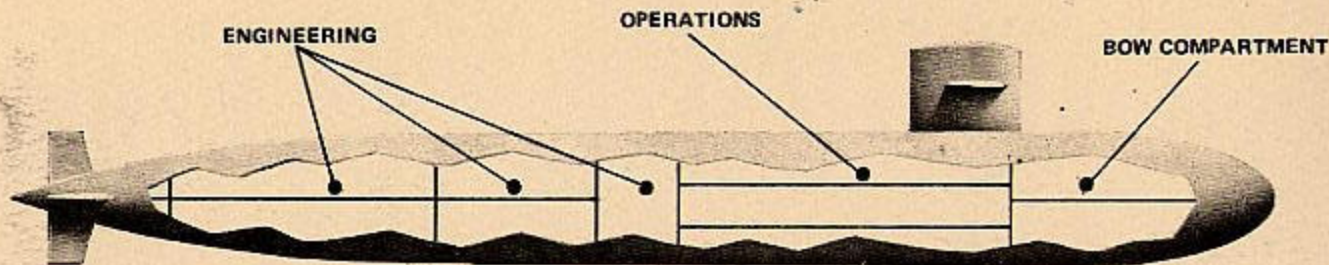
The USS SPADEFISH (SSN668) is a nuclear fast attack submarine of the STURGEON class. She is 292 feet long with a beam of 32 feet and a submerged displacement of about 4600 tons. Built at Newport News Shipbuilding and Drydock Company her keel was laid on 21 December 1966 and she was launched on 15 May 1968. On 14 August 1969 she was commissioned and joined Submarine Squadron SIX at Norfolk, Virginia.

SPADEFISH's primary wartime mission is to detect, track and destroy enemy submarines. In order to achieve this capability she has been equipped with an elaborate sonar system (BQQ-5), a highly advanced installation capable of searching for and detecting targets on the surface and submerged at great ranges. To utilize the increased capabilities of her sonar, SPADEFISH has installed a modern computer controlled submarine weapon system (MK-117), designed to permit the attacking and sinking of submarines and surface ships at great distances. Her weapons system is capable of firing the latest in the United States's arsenal of submarine launched weapons including the MK-48 torpedo, the SUBROC and HARPOON missiles.

SPADEFISH combines the endurance and environmental independence of nuclear power with deep submergence, high speed, quietness, and the most advanced weapons and electronic capabilities. She and her sister ships are the Navy's most effective anti-submarine weapon.

SPADEFISH's history has included participation in several fleet exercises and an independent operation for which she was awarded the Navy Unit Commendation in 1970 and again, for a particularly noteworthy effort, the Navy Meritorious Unit Commendation in 1971. In 1972 she was awarded the Submarine Division Sixty-Two Battle Efficiency "E". Undergoing her first overhaul in September 1973 - July 1974, she quickly reestablished her reputation as a superior ship by again being awarded the Meritorious Unit Commendation as a result of a Mediterranean Sea deployment in 1975. After participating in several anti-submarine fleet operations and independent operations, SPADEFISH was awarded the COMSUBRON SIX Battle Efficiency "E". In January 1978, she entered Newport News Shipbuilding and Drydock Company for her first refueling overhaul. In July 1979 she returned to active service with SQUADRON SIX.

SHIP'S COMPARTMENTS



ENGINEERING — These spaces provide room for the pressurized-water type nuclear reactor, the steam turbine-generators which produce electrical power, and the propulsion turbines which drive the ship. The propulsion turbines are accompanied by reduction gears which transmit the power to the shaft, ultimately turning the screw to give motion to the ship. The engineering spaces are filled with complex electrical and fluid systems which support the main and auxiliary components of the propulsion plant.

OPERATIONS — This area, between the bow compartment and engineering spaces, provides space for navigational equipments, ship control, and various habitability areas. The radio room, sonar room, officers' staterooms, wardroom, and ship's offices are also located here. The lower level of the operations compartment is primarily occupied by the torpedo room.

BOW COMPARTMENT — This portion of the ship is primarily a habitability space and includes most of the crew's berthing. Quarters for the chief petty officers are found here, and a small machinery space houses the auxiliary diesel generator.



HISTORY of FIRST USS SPADEFISH (SS411)

The original USS SPADEFISH was commissioned at Mare Island Naval Shipyard. Despite her late entry into World War II, she significantly assisted in achieving victory in the Pacific war area.

Under the command of Commander G. W. Underwood, SPADEFISH departed Pearl Harbor on 23 July 1944 for her first war patrol in company with PICUDA and REDEFIN. The patrol got off to a resounding start on 19 August when SPADEFISH sank the 9,589 ton ship TAMATSU MARU. Success continued with the wolf pack establishing a new record of 66,000 tons sunk in a single patrol. SPADEFISH personally downed six ships for a total of 31,542 tons during this patrol.

Her second patrol was highlighted by the sinking of the Japanese escort aircraft carrier JINYO. By the end of her fifth and last patrol of World War II, SPADEFISH had sent twenty-five enemy ships totalling 91,200 tons to the bottom.

USS SPADEFISH received the Presidential Unit Citation for extraordinary heroism during her first and second patrols.

USS SPADEFISH (SS411) was decommissioned on 3 May 1946 at her birthplace in Mare Island, California.

COMMANDING OFFICER

COMMANDER MARIO P. FIORI



Commander Mario P. FIORI was born in Frankfurt/Main Germany on December 14, 1941. He entered the Naval Academy in 1959 following graduation from Brooklyn Technical High School, New York. He was commissioned an Ensign upon graduation with the class of 1963.

Commander FIORI reported to USS TENCH (SS417) in August 1963 and served as Assistant Engineer and Supply Officer. During this period he earned his dolphins and, in September 1964, was transferred for duty under instruction at Massachusetts Institute of Technology while participating in the Navy Officer Advanced Education Program (Burke Program). In September 1968 after earning the Doctor of Philosophy degree, he reported to the S3G Prototype at West Milton, New York to undergo nuclear academic and prototype training. In May 1969 he joined the USS PARGO (SSN650) and during his tour served as Electrical and Reactor Controls Officer, Communicator, Electronics Material Officer, Weapons Officer, Operations Officer and Navigator. Upon transfer in February 1973, Commander FIORI reported to the Chief of Naval Operations, Systems Analysis Division (OP-96) and served as Naval force attack submarine analyst. In addition, on inter-agency loan, he served as the Department of Defense Liaison Officer with the Federal Energy Administration. From August 1975, to December 1978 he served as Executive Officer, Blue Crew, USS GEORGE WASHINGTON CARVER (SSBN656). Commander FIORI relieved as Commanding Officer USS SPADEFISH August 25, 1979.

Commander FIORI is the recipient of the Joint Services Commendation Medal, the Navy Commendation Medal with two gold stars and the Meritorious Unit Commendation Medal with bronze star.

Commander FIORI is married to Susan Wintfield Bayles of Arlington, Virginia. The FIORI's reside in Virginia Beach, Virginia with their three daughters Cristina, Alison, and Kate.