

WELCOME ABOARD



Nuclear Attack Submarine



DEPARTMENT OF THE NAVY

USS BERGALL (SSN-667)

FPO NEW YORK NY 09565-2347

5720
SSN667

COMMANDING OFFICERS

CDR Billy F. Tally, USN	13 June 69 - 2 February 73
CDR Raymond E. Wyatt, USN	2 February 73 - 22 October 76
CDR Reid H. Smith, USN	22 October 76 - 6 February 81
CDR Stephen V. Mladineo, USN	6 February 81 - 25 October 84
CDR Dennis K. Gibbs, USN	25 October 84 - Present

VITAL STATISTICS

Builder: General Dynamics, Electric Boat Division, Groton, Ct.

Type: Nuclear Attack Submarine (SSN)

Keel laid: 16 April 1966

Launched: 17 February 1969

Commissioned: 13 June 1969

Length: 292 feet

Displacement: 4,200 tons (submerged)

Crew: 15 Officers, 120 Enlisted (approx.)

Armament: MK48 torpedoes, MK 57 Mine, UUM-44 Subroc, UGM-84 Harpoon

Sonars: AN/BQQ-5(B), AN/BQS-14, AN/BQN-17

Fire control: MK 117/MOD 2 UWFC

Electronics: AN/WLQ-4 Sea Nymph

Propulsion: Pressurized, water-cooled nuclear reactor

USS BERGALL was commissioned and homeported in Groton, Connecticut until September 1978 when her homeport was changed to Norfolk, Virginia at the beginning of a major overhaul.

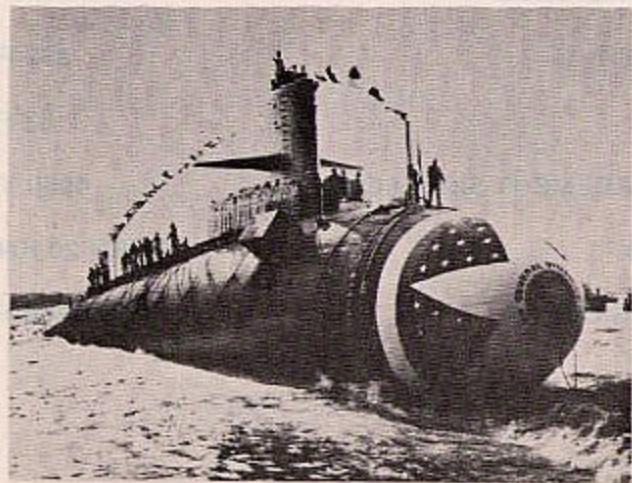
USS BERGALL
(SSN - 667)

VITAL STATISTICS

Built by
GENERAL DYNAMICS CORPORATION
ELECTRIC BOAT DIVISION

KEEL LAID	4 April 1966
LAUNCHED	17 February 1968
COMMISSIONED	13 June 1969
LENGTH	292 FEET
BEAM	32 FEET
DISPLACEMENT SURFACED	4060 TONS
SPEED	OVER 20 KNOTS
DIVING DEPTH	OVER 400 FEET

**UNITED STATES SHIP
BERGALL
(SSN-667)**



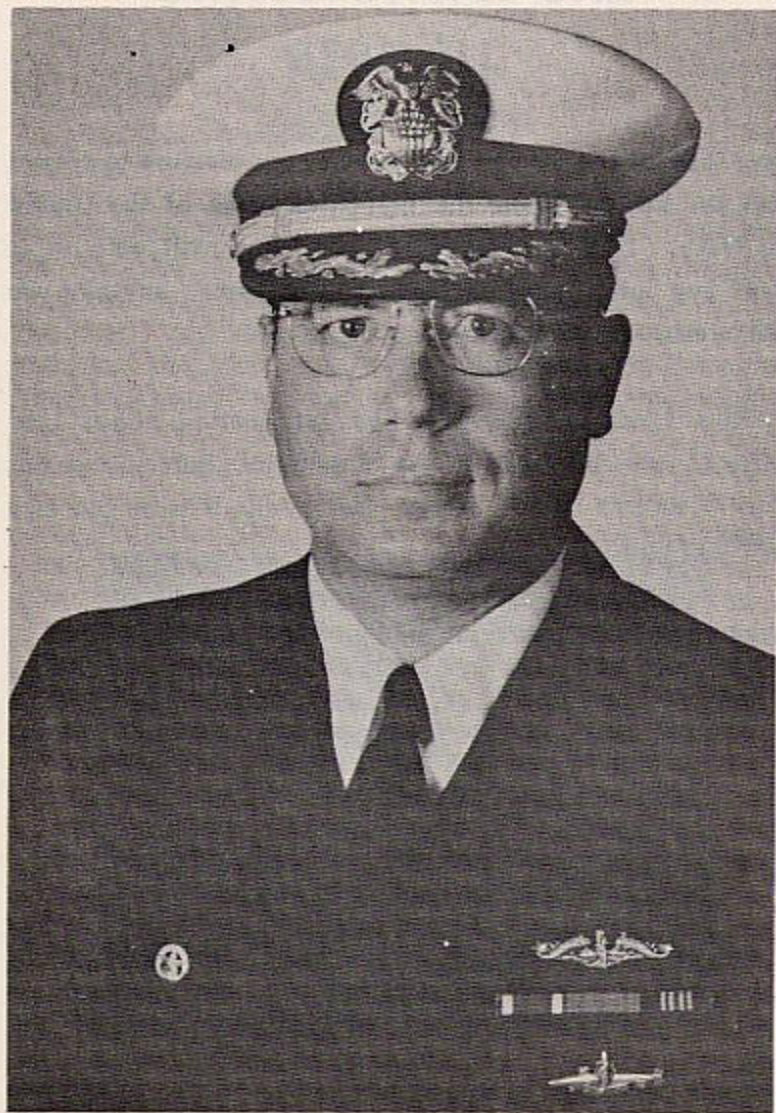
WELCOME ABOARD

On behalf of the officers and crew, it is a pleasure to extend to you the hospitality of the submarine force of the United States Navy. It is our desire to make your visit with us as pleasant and informative as possible. If there is anything we can do to assist you, please ask.

In this brochure you will find information about USS BERGALL, her heritage in the Submarine Force, and her mission in today's nuclear Navy. Please take it with you as a memento of your visit.

Again, welcome aboard and enjoy your visit.

COMMANDING OFFICER
USS BERGALL (SSN - 667)



**COMMANDING OFFICER
DENNIS K. GIBBS
COMMANDER, U. S. NAVY**

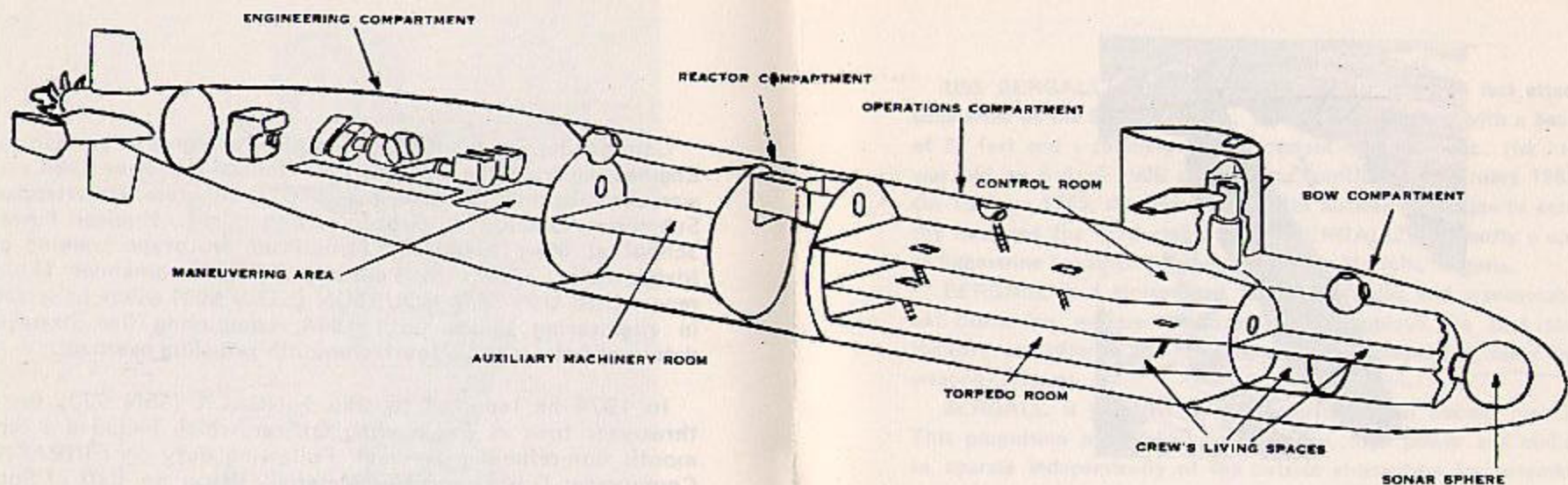
THE COMMANDING OFFICER

Commander Dennis K. Gibbs received a degree in Mechanical Engineering from the University of Nebraska in June 1968 and was commissioned through the NROTC program. He attended Submarine School in Groton, Connecticut, Nuclear Power School at Mare Island, California and prototype training at Idaho Falls, Idaho. In February 1970 Commander Gibbs reported to USS SAM HOUSTON (SSBN 609) where he served in engineering billets until 1974, completing five strategic deterrent patrols and a fourteen-month refueling overhaul.

In 1974 he reported to USS FINBACK (SSN 670) for a three-year tour as Engineering Officer which included a ten-month non-refueling overhaul. Following duty on FINBACK, Commander Gibbs served as Material Officer on staff of Submarine Squadron FOURTEEN in Holy Loch, Scotland. Commander Gibbs reported as Executive Officer of the BOSTON (SSN 703) Pre-commissioning Unit when the crew was formed in 1979.

Commander Gibbs reported to BERGALL from Commander, Naval Sea Systems Command, Washington, D.C. where he served a two-year tour as Assistant Project Manager for the MK 48 Torpedo Project.

Commander Gibbs met his wife, Shirley, at the University of Nebraska. They reside in Virginia Beach, Virginia.



ENGINEERING SPACES - These spaces provide room for the turbines which produce electrical power and the propulsion turbines which drive the ship. The propulsion turbines are connected to reduction gears which transmit power to the shaft which turns the propeller to drive the ship. The engineering spaces contain fluid and electrical systems which support the reactor, the propulsion train and auxiliary ship's equipment.

REACTOR COMPARTMENT - This specially shielded compartment houses the nuclear reactor which is the source of power to drive the ship. The nuclear reactor is extremely reliable and is capable of delivering high power for extended periods of time. The reactor operates independently of the atmosphere allowing almost indefinite submerged endurance.

OPERATIONS COMPARTMENT - This area between the bow and reactor compartments provides space for navigational equipment, sonar equipment, ship control, communications and living areas. The ship's offices, officer's staterooms, wardroom and crew's mess are also located in this compartment. The lower level of the operations compartment is primarily occupied by the torpedo room.

BOW COMPARTMENT - This portion of the ship is primarily a berthing area with quarters for the crew and the chief petty officers. The forward portion of the lower level contains the emergency diesel generator.

HERITAGE of USS BERGALL (SSN-667)



USS BERGALL (SSN - 667) is the second Navy submarine to bear the name BERGALL. The original USS BERGALL (SS - 320) was built by the Electric Boat Company at Groton, Connecticut and following her commissioning on 12 June 1944 was assigned to the Seventh Fleet for war patrols in the South China Sea.

Although BERGALL entered the war late, she compiled an impressive record, earning four battle stars and the Navy Unit Commendation. She is credited with sinking or damaging nearly 100,000 tons of enemy shipping during her five war patrols. On her most successful of these, her second patrol, she was damaged by enemy gunfire after a successful attack on an enemy cruiser. Despite a gaping hole in the pressure hull that made it impossible to dive, her skipper made a daring surface run from French Indo-China, through the Karimata and Lombok Straits to Australia, a distance of over 2,000 miles, undetected. For this effort she received the Navy Unit Commendation.

Following the war, BERGALL was assigned to both the Atlantic and Pacific Fleets and was decommissioned on 17 October 1959.

PROFILE OF THE USS BERGALL (SSN-667)

USS BERGALL (SSN - 667) is a nuclear powered fast attack submarine of the Sturgeon Class. She is 292 feet long with a beam of 32 feet and a submerged displacement of 4600 tons. Her keel was laid on 4 April 1966 and she was launched 17 February 1968. On 13 June 1969, she became the 84th nuclear submarine to enter the fleet and the 43rd attack type. BERGALL is presently a unit of Submarine Squadron Six, homeported in Norfolk, Virginia.

BERGALL is a streamlined, highly advanced and maneuverable anti-submarine warfare platform which employs the best that industry can offer in the important areas of propulsion, sonar and weapons systems.

BERGALL is powered by a pressurized water nuclear reactor. This propulsion plant provides reliability, high power and ability to operate independently of the outside atmosphere for extended periods of time. The reactor heats pressurized circulating water which in turn carries that heat to secondary water. The secondary water becomes steam. This steam is used to operate turbines which provide propulsion and electric power.

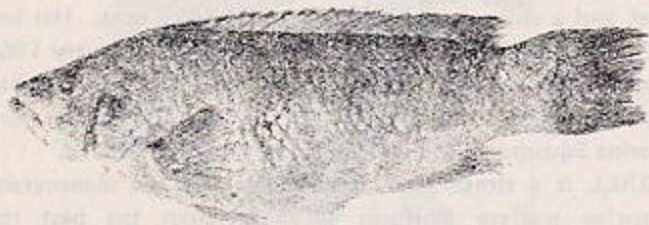
BERGALL carries the latest and most advanced submarine sonar system in the U. S. Navy. This system is coupled with a highly advanced fire control system and a electronics support system which is the first of its kind in the submarine force. These systems add substantially to BERGALL'S formidable antisubmarine and anti-surface ship capabilities.

BERGALL also carries the most advanced weapons available to the submarine force including the SUBROC and HARPOON missile systems and the MK-48 torpedo. BERGALL'S weapons systems are supported by the latest in computer technology.

In order to provide the capability for operations submerged, BERGALL carries extensive atmosphere control equipment. Included is an air conditioning system for temperature and humidity control, electrolytic oxygen generators to manufacture oxygen from sea water and special atmosphere control equipment to remove contaminants from the air. Large distilling plants provide plenty of fresh water from sea water.

BERGALL is capable of speeds in excess of 20 knots submerged and can dive to depths in excess of 400 feet. BERGALL was awarded the Navy Unit Commendation for operations conducted in 1972 and the Meritorious Unit Commendation for operations conducted in 1980 and 1981.

THE BERGALL



USS BERGALL (SSN - 667) takes her name from the Bergall or Cunner fish, which is a multi-colored member of the tropical fish family. The Bergall is a native of New England and can be found from Newfoundland to New Jersey. It is a formidable adversary for fishermen because of its sharp needle-like teeth and protective spines. It reaches a length of 15 inches and a weight of 2 1/4 pounds.

A common place to find the Bergall is near rocks, wrecks and the pilings of wharves and bridges. In all environments, the Bergall can adapt its coloring to remain undetected.

**THE ATTACK SUBMARINE
USS BERGALL (SSN-667)**

