



**WELCOME ABOARD**

**USS  
HAMMERHEAD**

**SSN 663**

**Nuclear Attack Submarine**

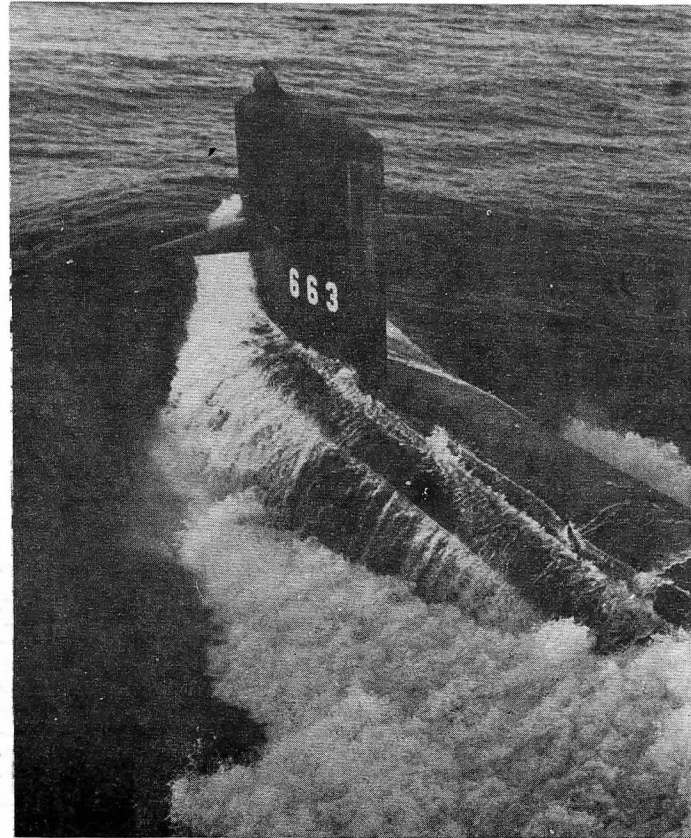
## FACTS ABOUT THE HAMMERHEAD

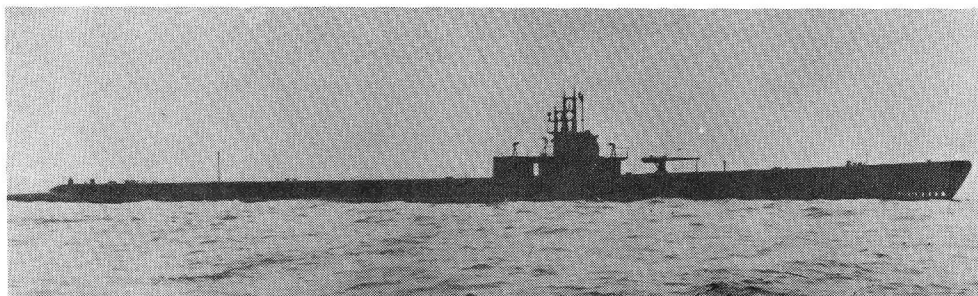
The USS HAMMERHEAD (SSN663) is a nuclear fast attack submarine of the STURGEON class. She is 292 feet long with a beam of 32 feet and a submerged displacement of about 4600 tons. Her keel was laid on 29 November 1965 and she was launched on 14 April 1967. On 28 June 1968, she became the 77th nuclear submarine to enter the fleet. Her assignment since commissioning has been to Submarine Squadron SIX in Norfolk, Va.

HAMMERHEAD is a streamlined, highly advanced, and maneuverable anti-submarine warfare platform which uses the most advanced technology to accomplish her mission. She is powered by a nuclear reactor which provides reliability, high power, and the ability to operate submerged for extended periods. Advanced Sonar and Fire Control Systems provide her with the most sophisticated detection and weapons delivery systems in the fleet. Weapons capable of being carried on board include high speed wire guided torpedoes, anti-submarine long range underwater launched rockets and underwater launched anti-surface ship cruise missiles.

In order to permit sustained submerged operations, atmosphere control systems are incorporated into HAMMERHEAD's design. The ship is able to manufacture oxygen from sea water, remove carbon dioxide and carbon monoxide from the atmosphere and maintain all other atmosphere gasses in their proper amounts for indefinite periods.

Super-quiet, deep-diving and swift, HAMMERHEAD is one of the most capable warships of the United States Fleet.





FIRST HAMMERHEAD



BATTLE FLAG OF FIRST HAMMERHEAD

## HISTORY OF USS HAMMERHEAD SS364

The first HAMMERHEAD was constructed at Manitowoc, Wisconsin and commissioned on March 1, 1944. She joined the Pacific Submarine Force and began her first patrol in June 1944. Conducted in the area south of Formosa, this first patrol proved to be very successful. HAMMERHEAD sank a total of four enemy vessels including a large passenger freighter and a cargo ship.

Her second war patrol spent in the Java and South China Seas was one of the most successful of the entire war. During this patrol, two Japanese convoys were sighted and both engagements developed into effective torpedo attacks. Operating in the hazardous coastal water off South China, HAMMERHEAD sank six enemy ships and severely damaged another. For this outstanding performance, the ship was awarded the Navy Unit Commendation.

The vessel commenced her third war patrol in November 1944, again in the South China Sea, with LAPON and

PADDLE. This patrol saw HAMMERHEAD sink a large Japanese oiler.

On her fourth patrol, HAMMERHEAD sank one Japanese escort vessel.

The fifth patrol, conducted off the coast of Indo-China, resulted in the destruction of an enemy destroyer and a destroyer escort.

The sixth war patrol during May 1945 brought the destruction of an enemy tanker and a cargo ship. The seventh and last war patrol took place in the South China Sea.

In January 1947, after sinking sixteen enemy naval and merchant ships and earning seven battle stars and a Navy Unit Commendation, HAMMERHEAD was placed out of commission and in reserve status. In October of 1954, the submarine was decommissioned and loaned to the Government of Turkey where she continues to proudly serve the Turkish Navy under the name of CERBE (S-03).



COMMANDER HOWARD J. HALLIDAY, JR.

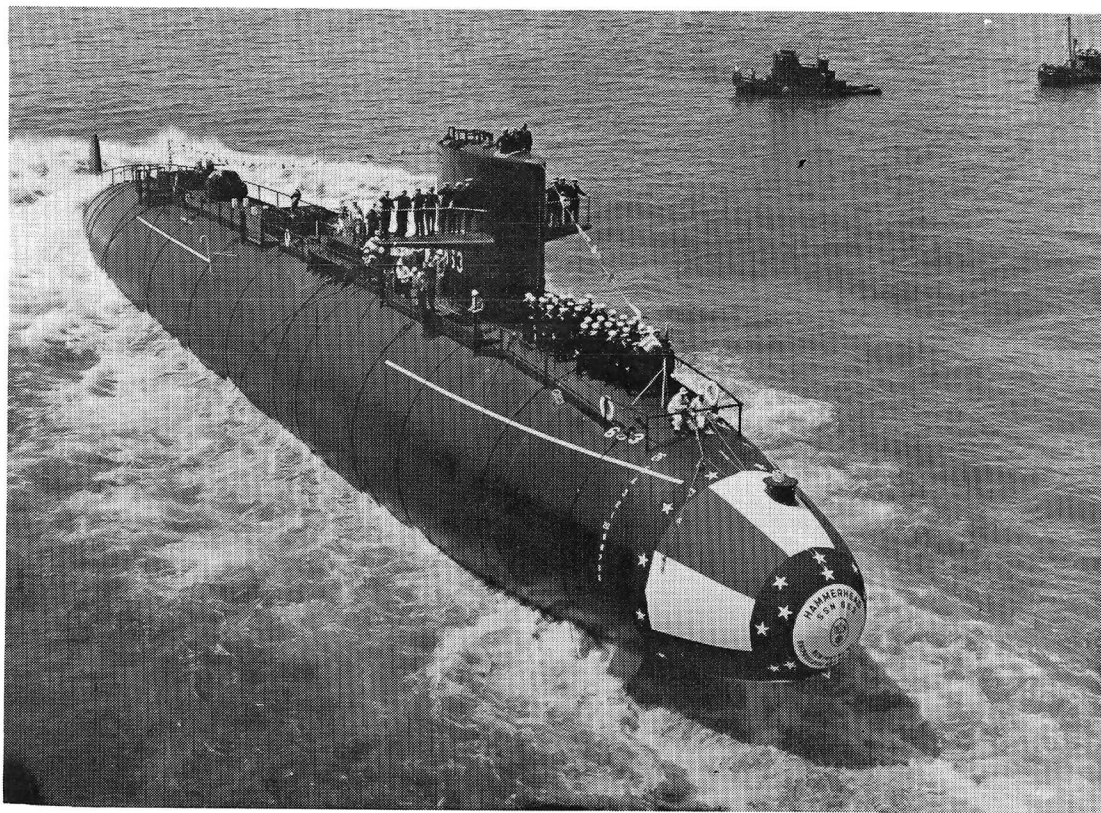
UNITED STATES NAVY

Commander H. J. Halliday was born in Wilmington, Delaware in 1947. He graduated from the U.S. Naval Academy in 1969 where he received a Bachelors Degree in Applied Science. In 1970 he graduated from the University of Illinois receiving a Master of Science degree in Nuclear Engineering.

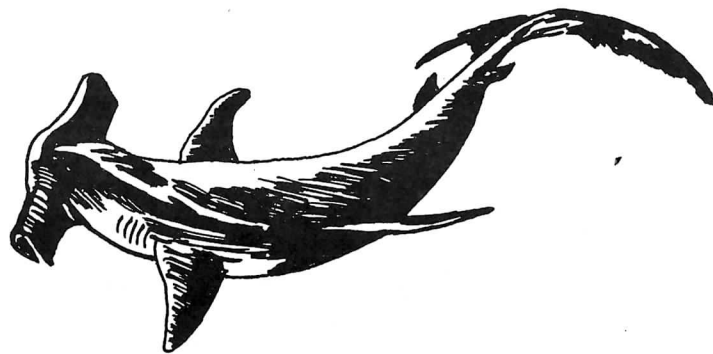
Upon completion of Nuclear Power and Submarine training in October 1971, he reported aboard USS SEA DEVIL (SSN 664) where he served as an Engineering Division Officer and Weapons Officer. In January 1975, Commander Halliday reported to USS NATHANAEL GREENE (SSBN 636) BLUE for duty as Engineer Officer.

In January 1978, Commander HALLIDAY reported to Commander Submarine Squadron SIXTEEN, Rota Spain, as Material Officer where he participated in the relocation of the squadron to King's Bay, Georgia. In December 1979, Commander Halliday reported to USS BATON ROUGE (SSN 689) for duty as Executive Officer. Commander Halliday detached from USS BATON ROUGE in December 1983 and began Prospective Commanding Officer training in January 1983. Commander Halliday has been awarded the Meritorious Service Medal (two awards) and the Navy Achievement Medal (three awards).

Commander Halliday is married to the former Kathleen Carr of Wilmington, Delaware. They and their three children reside in Norfolk, Virginia.



USS HAMMERHEAD (SSN 663) LAUNCHING 14 APRIL 1967



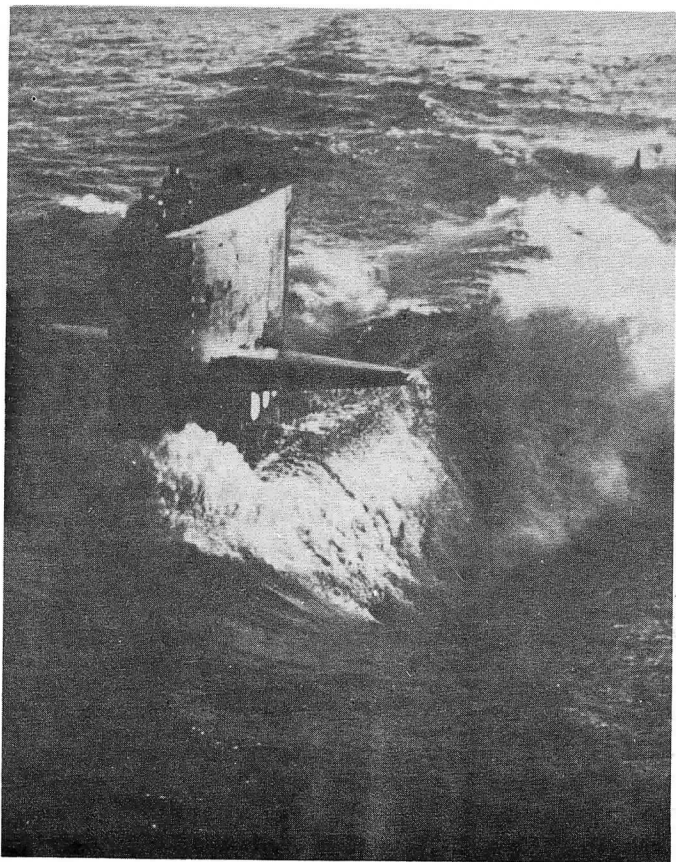
## HAMMERHEAD SHARK

The HAMMERHEAD is a shark whose Latin name is "Sphyrna Zygaena". It is found in the tropical and the warm temperate belts of the Atlantic and West Indian-Caribbean region.

This shark may be easily recognized by the large "hammer" at the front of its head. Its color is olive or brownish gray above, lighter on the sides, and pure or grayish white below. Born live at a length of 20 inches, adults mature at about 8 or 9 feet and are often caught up to 13 feet. They are not edible but are classified as sport fish.

The Hammerhead is a strong swimmer often seen at the surface with tips of the dorsal fins exposed. Their diet consists chiefly of fish commonly sting rays and small sharks, including their own kind. They are known to be dangerous and are classified as "man eaters".





☆☆☆☆

☆☆☆☆

