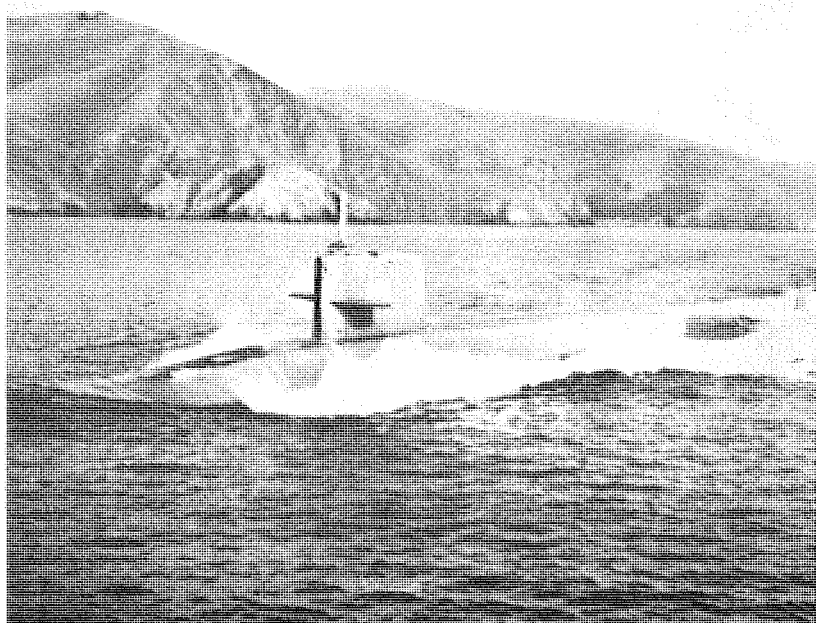


U S S Mariano G. Vallejo

SSBN 658



Change Of Command

KEEL LAID

7 JULY 1964



LAUNCHED

23 OCTOBER 1964



COMISSIONED

16 DECEMBER 1966



COMPLETED

POSEIDON CONVERSION

27 DECEMBER 1973

COMMANDER HENRY J. SCHNEIDER, USN

Commander Henry J. SCHNEIDER lived in Merrick, New York, until completion of high school. He attended the United States Merchant Marine Academy from 1951 to 1953 and then entered the United States Naval Academy, graduating in the Class of 1957.

Following commissioning, he served in USS CANBERRA (CAG2) until December 1958 when he was assigned to Submarine School. He completed submarine qualification in USS CLAMAGORE (SS343) and in October 1960 commenced nuclear power training. After three patrols in USS PATRICK HENRY (SSBN599) GOLD he commenced a two-year tour with the commissioning crew of USS TECUMSEH (SSBN628) BLUE. In 1965 he was assigned as Engineer of USS PLUNGER (SSN595) for two years, and then attended the Naval Postgraduate School, Monterey, California, where he received a degree in Operations Research. In February 1969 he was assigned as Executive Officer of USS JOHN MARSHALL (SSN611) GOLD and made four patrols.



He is married to the former Mary Jane Vogel of Baltimore, Maryland. They have three children, Henry Jr., Theresa and John, and they reside in Mt. Pleasant, South Carolina.

COMMANDER JAMES E. COLLINS, USN

Commander James E. COLLINS was born in Los Angeles, California, and lived in the Pasadena/San Marino, California area until graduation from South Pasadena High School in 1955. He then attended the United States Naval Academy in Annapolis, Maryland, graduating with distinction with the Class of 1959.

Following commissioning in June 1959 Commander COLLINS served in various weapons and operations department billets in USS FRANK E. EVANS (DD754) until he entered Naval Submarine School in April 1960. Successfully completing the six-month submarine school, he then completed Advanced Nuclear Power School at New London, Connecticut, followed by operational reactor prototype training at the SIW site, Idaho Falls, Idaho.

Commander COLLINS completed six Polaris patrols in the first fleet ballistic missile submarine, USS GEORGE WASHINGTON (SSBN598), serving in various engineering billets and as Operations Officer. His last patrol in the ship was as Engineer Officer. He then completed five additional patrols and conversion of the ship from the A-1 to the A-3 Polaris missile aboard USS ABRAHAM LINCOLN (SSBN602). From 1968 to 1970 he attended the Naval Postgraduate School, Monterey, California, and received a Masters Degree in Computer Science in June 1970. He then served as Executive Officer in USS WHALE (SSN638) during which time the ship was awarded two Meritorious Unit Commendations and the Battle Efficiency "E". Commander COLLINS assumed command of the USS MARIANO G. VALLEJO (SSBN658) Gold on 17 December 1973.

Commander COLLINS is married to the former Bette MacGregor of Mystic, Connecticut. They have two children, Lisa Lynn and James MacGregor COLLINS, and reside in Mt. Pleasant, South Carolina.



James E. Collins

COMMAND HISTORY

MARIANO G. VALLEJO (SSBN658) was authorized to be built as the fortieth fleet ballistic missile submarine of the Polaris/Poseidon fleet. Her keel was laid on 7 July 1964 at ceremonies at the Mare Island Naval Shipyard, Vallejo, California and bears the initials of President Lyndon B. JOHNSON. Fifteen months later on 23 October 1965, she was launched and officially christened by Miss Patricia O. V. McGETTIGAN, the great-great granddaughter of General Mariano G. VALLEJO.

General VALLEJO was born on 7 July 1808 in the settlement of Monterey, California. In 1825 he was appointed Secretary to the Mexican governor of California. VALLEJO served as commander of the Presidio of San Francisco for several years and in 1836 was appointed Commandante General and Director of Colonization of the Northern Frontier, the highest military command in northern California. General VALLEJO enthusiastically supported peaceful annexation of California during the Bear Flag Revolt, and was a signer of the state constitution drafted in October 1849. General VALLEJO was subsequently elected a member of the first State Senate which convened in 1850.

General VALLEJO died quietly in his home in Sonoma, California on January 12, 1890 and was buried on a hill overlooking the town.

USS MARIANO G. VALLEJO (SSBN658) was placed in service on 9 October 1966 and initial sea trials were successfully conducted on 6 November 1966. On 16 December 1966 Rear Admiral CLARK, Commandant of the Twelfth Naval District, commissioned the ship USS MARIANO G. VALLEJO (SSBN658), with principal address given by Rear Admiral John G. MAURER, Commander Submarine Force, Pacific. Since that time VALLEJO has completed 20 successful Polaris deterrent patrols in both the Atlantic and Pacific. VALLEJO was awarded the Meritorious Unit Commendation for service as a member of Submarine Squadron FIFTEEN (Pacific Fleet) during the period 1 July 1968 to 1 October 1970.

The VALLEJO was converted to carry POSEIDON missiles during an overhaul period at Newport News Shipbuilding and Drydock Company, Newport News, Virginia which was completed on 27 December 1973. Both crews then completed a Demonstration and Shakedown Operation. The Blue Crew has just completed the first POSEIDON Patrol and the Gold Crew is currently preparing for the second POSEIDON Patrol which will be the 22nd FBM Deterrent Patrol.

PROGRAM

Arrival Honors

National Anthem

COMSIX Band

Invocation

Chaplain C. D. KEMP

Remarks by Commander Submarine Group SIX

Rear Admiral A. L. KELLN

Remarks and Reading of Orders

Commander H. J. SCHNEIDER

Reading of Orders and Remarks

Commander J. E. COLLINS

Benediction

Chaplain C. D. KEMP

USS MARIANO G. VALLEJO (SSBN658) GOLD CREW

31 AUGUST 1974

CDR J. E. COLLINS COMMANDING OFFICER

LCDR R. N. JOHANNES EXECUTIVE OFFICER

LT P. L. CRIPE	ENGINEER	LT T. W. PAUL	WEAPONS
LT R. E. HAWTHORNE, Jr.	NAVIGATOR	LT G. M. GREEN	DCA
LTJG J. M. MCLOCHLIN	COMMUNICATOR	LTJG C. A. FROELICH	AWEPS
LTJG P. E. TAYLOR	E/IC DIV	LTJG R. A. PICKETT	M DIV
ENS R. V. LAW	SUPPLY	LT M. A. PAYNE	RC DIV

FTCM R. L. KING CHIEF OF THE BOAT

EMCS J. D. COOPER	FTCS H. R. SHEAROUSE	RMCS J. A. HAIR
QMC F. J. MALEY	MMC D. E. HEISER	ETC R. T. HINCHLIFFE
TMC W. R. TURNER	MMC J. B. HARRINGTON	ETC A. E. HAZLETT
ETC J. A. BRADY	ICC J. J. FORTIER	

STS2 R. C. ALDRET	MM2 A. L. ASTON	MT2 E. B. ATTAWAY
YNSA P. B. BACKE	ET1 T. A. BAKER	SK3 D. A. BARGMANN
ETN3 B. F. BIDWELL	IC3 G. A. BOATMAN	MT3 G. M. BROOKS
STS2 E. M. BROWN	ETN2 M. A. BROWN	MT1 D. M. CLIMER
EM1 G. A. BURNS	ET1 C. D. BURROUGHS	TM2 J. R. CAMPBELL
HM1 E. P. CATINGUB	CSSA R. W. CHAPIN	TMSN R. E. COLEMAN
ETR3 J. D. COMEAUX	STS3 P. P. COOK	ETR3 R. L. CRENSE
FTG1 G. J. CROZIER	MM1 D. E. CURRY	RM2 B. E. DAUGHERTY
EM2 A. W. DENNIS	ET1 V. R. DILLON	SN H. DOMINGUEZ
FA Z. DORSEY	MM3 M. W. DOUGLAS	STS3 S. J. DUNN
FA J. J. EASON	MM3 D. E. EBELING	MM2 S. G. EHLERS
YNT H. W. FITZGERALD	SN D. W. FOUNTAIN	TM2 W. I. GALLAUGHER
MM2 A. T. GARDNER	MMFN K. L. GOLDSTON	ETR2 D. N. GRAVES
TM1 B. C. GREENWOOD	FTB2 W. C. GREER	MT1 D. W. HAAS
MT2 L. K. HAHN	RMSN P. D. HALLYBURTON	YN3 D. J. HARJU
MM2 P. A. HARMON	MM2 M. J. HARRISON	QM3 W. E. HELMS
MM2 K. A. HENNECKE	ET1 R. R. HIRONS	QMSA R. W. HUGGINS
ETR3 M. A. IVES	RM2 D. R. JUERGENS	MT3 G. R. KEEGAN
ETR3 D. F. KLOCKENTAGER	IC1 M. G. KOUDELKA	ICFN H. R. KRUEGER
MM2 T. D. LANGDON	TM1 R. C. LANGLEY	TM2 W. A. LINN
TM3 D. L. LOGAN	MM2 N. B. MCCRARY	MM3 D. W. MCFARLAND
MM2 W. P. MCMAHUS	MM3 W. R. MCNEILL	IC3 E. N. MIDDLETON
MM1 K. S. MILES	MM3 C. A. MILLER	ETN2 E. T. MITCHELL
SDSN J. K. MONTGOMERY	QM3 W. E. MORGAN	FTG1 J. A. MORISON
IC3 T. M. MULKERIN	CS3 M. K. MURNAN	MM1 L. E. NEIBCH
MM3 H. H. NEISSER	MM1 B. T. NELSON	MT1 D. W. NEIMY
IC3 J. E. NOFTSGER	QM2 R. M. NORTON	CS1 A. E. NOVY
FTB1 G. P. PAVELA	FTB1 J. S. PETERS	ETN2 J. P. PETERSON
RM1 L. B. PHILLIPS	TM1 W. R. PIER	STS3 R. J. FLEMING
SA D. W. REED	MT2 J. D. RICHARDSON	FA L. E. ROBINSON
QMSN J. R. ROMBOKAS	EM1 G. W. ROGERS	FA W. E. ROUGH
EM3 M. W. SALISBURY	SD2 D. B. SAN JOSE	MM2 G. S. SANDERS
MM1 R. B. SARGENT	ETN2 G. G. SCOTT	EM2 R. G. SEAWELL
MM2 W. L. SEGOVIS	STS3 J. M. SHILEY	IC2 D. L. SNYDER
FTB1 J. O. SOKOLIK	EM1 G. G. SOULT	MM3 R. M. SPRAW
ETN2 B. M. SPINNER	MM3 M. D. SPOON	FTB2 S. R. SPRAGUE
ST1 W. M. STELJES	QMSN J. O. STRADLEY	MM3 D. G. STUART
MM1 J. L. SYSLO	MM2 H. G. TACKETT	SK1 A. L. TAYLOR
CS2 W. S. TAYLOR	ST1 R. L. VAN AUKEN	MM3 G. D. WICKETT
SN R. C. WISE	RM2 K. J. YOUNGINER	EM1 D. R. ZABEL

USS MARIANO G. VALLEJO (SSBN658) BLUE CREW

31 AUGUST 1974

CDR H. J. SCHNEIDER COMMANDING OFFICER

LCDR A. W. KUESTER EXECUTIVE OFFICER

LT W. A. CLARKE	NAVIGATOR	LTJG H. X. NICHOLSON	FIRST LIEUTENANT
LT R. B. GOSLINE	WEAPONS	LT G. R. OVERBECK	DCA
LT H. D. HICKMAN	COMMUNICATOR	LT G. P. POIENCOT	ENGINEER
LT S. A. JOHNSON	DCA	LT D. A. SNELL	AWEPS
LTJG J. E. KAUCHER	E DIV	ENS J. T. STEMPLEWICZ	SUPPLY
ENS R. A. NELSON	RC DIV		

FTCM G. P. McDONALD CHIEF OF THE BOAT

ETCM J. P. DAVIS	MMCM R. K. SHOEMAKER	SKCS J. D. FARLEY
RMCS D. R. MURPHY	FTCS C. O. TODD	MMC C. CAUTHEN
QMC G. L. FARR	TMC J. F. HUME	ICC O. W. KENAMER
HMC P. G. MANN	CSC T. H. PETERSON	YNC J. V. STINCHCOMB
	ETC H. T. WATSON	

MT2 L. M. ALLEN	SN A. A. ARMSTRONG	ET1 R. S. ARMSTRONG
MM3 D. L. BAKER	ETR3 L. J. BARTYLLA	ETN3 T. A. BEDDICK
MM1 W. G. BEEN	ICFA M. J. BERG	SA C. BLAIR
MM2 J. A. BLAIR	FTB2 D. L. BOGGESE	IC1 M. H. BOWERS
FTB2 C. H. BREEDLOVE	STS3 D. E. BREWER	MT3 W. T. BROOKS
MT1 E. J. CERULLO	RM2 R. H. CHAMBERS	RM3 G. CONNERS
SN T. C. CONNER	EM2 D. A. COOK	EM2 R. D. CRAWFORD
ET1 F. W. CRAWN	MM3 J. M. CROWE	FTB2 R. S. CROWLEY
MM2 W. R. DAMBRUCH	ST1 D. J. DAVID	FA J. W. DAVIS
EM2 J. L. DEAVERS	ET1 D. M. DEWEESE	STS2 K. R. DIXON
SN J. E. DOHERTY	EM2 L. O. DOODY	EM2 T. E. DOTY
STS3 T. L. ESCH	TM3 M. D. EWING	MT2 P. M. FARRANT
TM1 F. J. FEGEL	ETN2 H. A. FERGUSON	STSSA J. E. FURST
ETN3 J. W. GEYER	EM1 W. L. GIBBS	SKSN L. M. GIBSON
EM2 D. W. GIFFORD	MM2 G. L. GOODE	TM3 J. L. GRABILL
MM1 D. L. HALL	IC2 W. E. HARMON	STS2 D. W. HEIM
FTB1 C. HILL	MM3 C. W. HOBBS	ETR2 D. C. IRVING
QM3 P. D. JAMESON	TM3 W. H. JIRAK	MM1 H. H. JOHNSON
CSSA M. L. JOHNSON	FA S. A. JONES	MM1 T. P. KASHUBA
EM1 V. L. KEES	MM1 M. A. KIEL	MM2 H. B. KING
ET1 L. R. LACOSS	MM2 A. L. LAMBIE	MM2 C. M. LANDGRAVER
SDSN M. L. LANDWEHR	QMSA G. R. LAUCK	CS2 J. N. LAWSON
TM1 J. L. LICKLIDER	RM2 W. F. LINNE	CS2 S. W. LUMPKIN
MM2 J. H. MARSH	QM3 W. C. MARTIN	RM3 W. K. MAXWELL
FTG2 R. N. MAY	MT2 R. G. MCFARLAND	MM2 G. H. MCKILLIP
MM2 J. S. MCLEOD	IC3 R. C. MCNEILL	TM2 G. K. MELLON
ET1 G. C. MERSEUREAU	ETN2 B. C. MORICK	ICFN J. L. MULLINS
FN J. L. PARKER	SN R. L. PARSONS	SD3 M. I. PERENA
MM1 T. G. PESCHKE	EM2 M. G. PHILLIPS	MM3 R. S. PIERCE
ETR3 S. D. POMPEY	MM1 G. D. POWELL	EM1 A. M. PRESCOTT
MT3 R. L. PURKEY	CS1 G. W. RABY	PN2 D. M. RASH
FTB2 K. A. RONNING	ETR2 R. D. ROSS	FTB2 S. J. RUSH
MM2 W. A. SARELY	ETN2 D. E. SEDGWICK	STS2 M. A. SHEARER
SN W. R. SHOCKLEY	SA D. M. SIGMON	ETN3 B. B. SMITH
MM3 P. W. SMITH	MM2 R. J. STEFFEN	MM2 D. L. STOUT
FTG1 J. A. STROHM	RM1 B. E. THOMAS	MT2 R. K. WAITE
MM3 J. L. WALKER	SN J. L. WELDON	MM3 L. L. WIEGAND
IC1 W. D. WILSON		

THE FLEET BALLISTIC MISSILE WEAPON SYSTEM

USS MARIANO G. VALLEJO is the fortieth of a total of forty-one Fleet Ballistic Missile (FBM) nuclear powered submarines which make up the POLARIS/POSEIDON Fleet of the United States Navy. Free to remain completely submerged for months, with an unlimited cruising range, the ship can remain undetected by any potential enemy, ready to launch her solid propellant POSEIDON missile within minutes of receiving the command. Mobile, hidden, ready for instant action, USS MARIANO G. VALLEJO and her sister FBM's provide the United States with a powerful and credible deterrent to any enemy attack.

USS MARIANO G. VALLEJO has two complete, equally trained crews, referred to as the "Blue Crew" and the "Gold Crew". Each crew has about one hundred forty officers and men. In order to maximize patrol "on station" time, the crews are rotated at regular intervals. During the period that one crew has the ship on patrol, the other crew is at their home port undergoing refresher training, taking leave, and in general preparing to go back on patrol.

In order to answer the demands of the 1970's the VALLEJO has been converted to carry the POSEIDON missile. The increased capabilities of the POSEIDON missile coupled with the inherent survivability of the nuclear-powered submarine give every assurance that the Fleet Ballistic Missile System will continue to be a reliable and credible force for peace in the years ahead.

