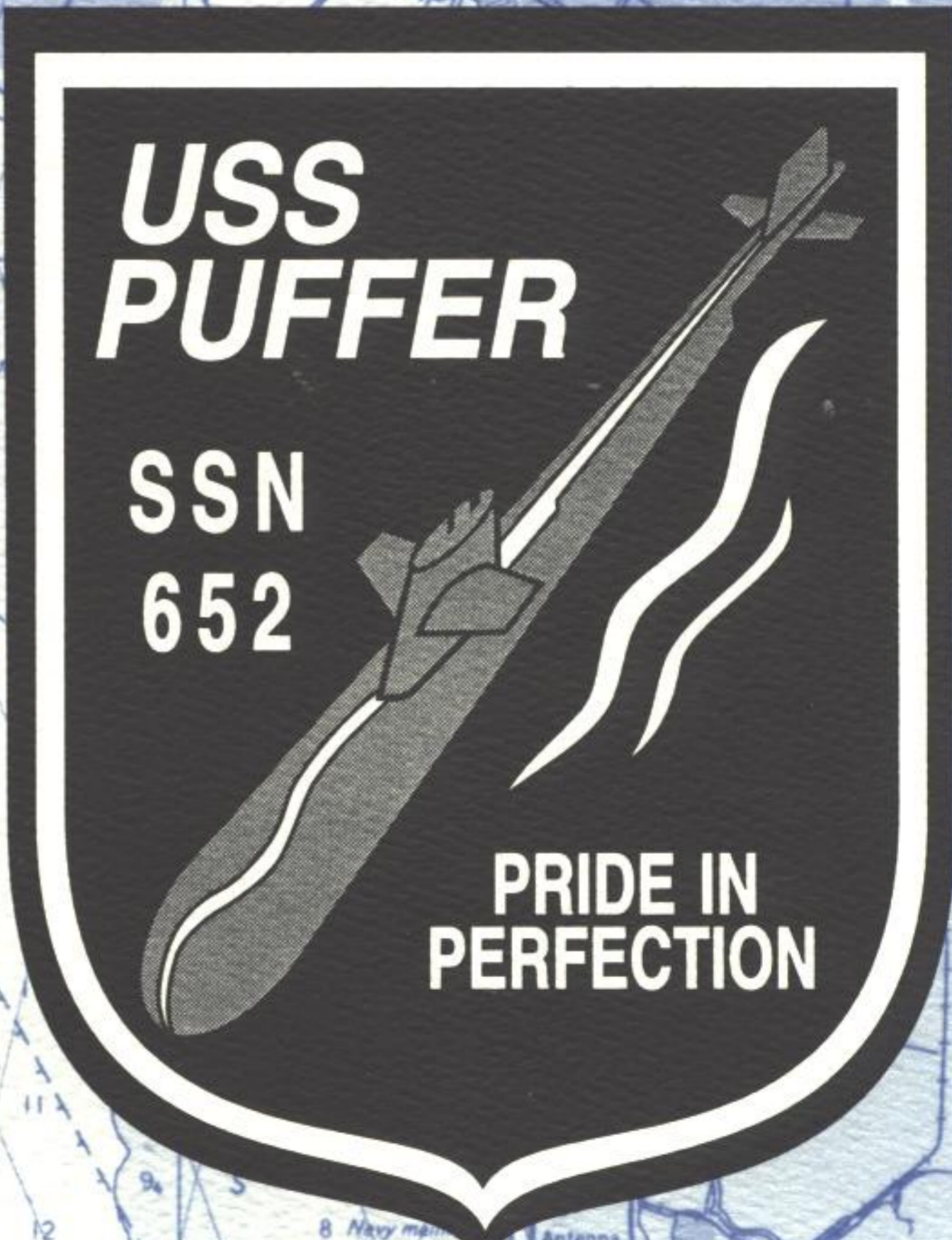


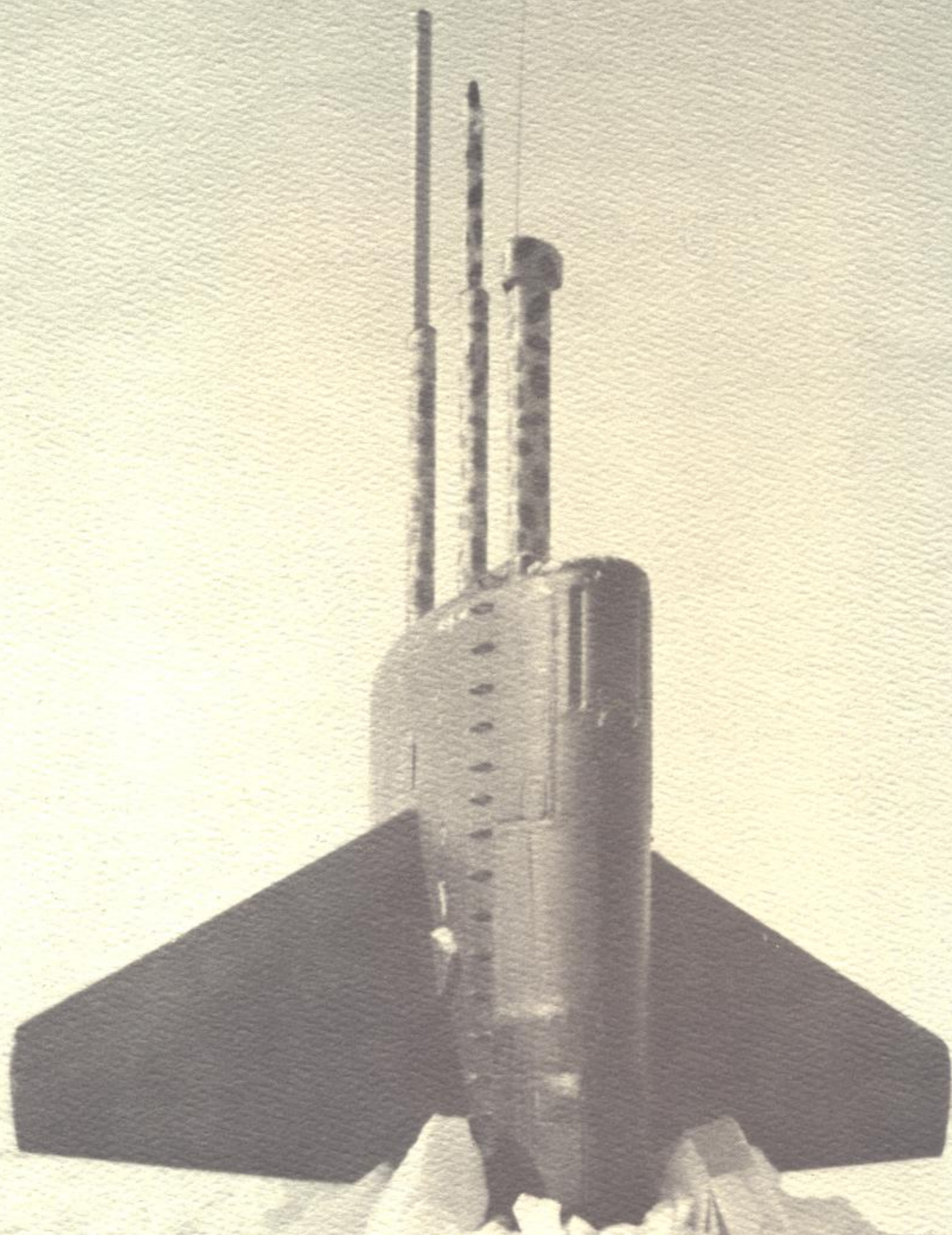
USS PUFFER (SSN 652)

**INACTIVATION
CEREMONY**

08 SEPTEMBER 1995

**NAVAL SUBMARINE BASE
SAN DIEGO, CALIFORNIA**





USS PUFFER (SSN 652)



COMMISSIONED 9 AUGUST 1969



THE COMMISSIONING PENNANT

At the moment the commissioning pennant is broken, a ship becomes the responsibility of the Commanding Officer, who, together with the ship's officers and crew, has the duty of making the ship ready for any service required by our nation, whether at peace or war.

For centuries the commissioning pennant has been the symbol of a man-o-war. It is believed to date to the 17th century, when the Dutch were at war with the English. Dutch Admiral Maarten Harpertzoon Tromp hoisted a broom at the masthead to symbolize his intention to sweep the English from the sea. This gesture was answered by British Admiral William Blake, who hoisted a horsewhip, indicating his intention to chastise the Dutch. The victorious British thus set the precedent for a long, narrow commissioning pennant to symbolize the original horsewhip as the distinctive symbol of a ship at war.

The modern U.S. Navy commissioning pennant is blue at the hoist with a union of seven white stars and a horizontal red and white stripe at the fly.



THE INACTIVATION CEREMONY

The ceremony today symbolizes a tribute to the ship preparing for its decommissioning, the time-honored end of a ship's life. As if decommissioning, the commissioning pennant is hauled down and the watches secured. The solemn ceremony where the commissioning pennant, ensign, and jack are hauled down for the last time is a dedication to the total operational success of the ship and the crew who sailed it.



JOHN M. WILL, JR.

**COMMANDER
UNITED STATES NAVY**

**FIRST COMMANDING OFFICER
USS PUFFER (SSN 652)**

GUEST SPEAKER

Commander Will, now Captain Will graduated from Cornell University in 1954 with a Masters degree in Mechanical Engineering. He began his naval career aboard the destroyers USS TUCKER (DDR 875) and USS RUPERTUS (DD 851).

Upon completion of Submarine School, Captain Will was ordered to USS WAHOO (SS 565). He then attended Nuclear Power School and was subsequently assigned to the commissioning crew of USS SCULPIN (SSN 590). From SCULPIN, he was assigned ashore as Director of Enlisted Nuclear Training at Bainbridge, Maryland. This was followed by a tour as Executive Officer of USS SEADRAGON (SSN 584). In 1966, he attended the Naval War College simultaneously obtaining a Master of Science degree in International Affairs from George Washington University.

From 1968 to 1972, Captain Will commanded USS PUFFER (SSN 652) putting her in commission in Pascagoula, Mississippi. He then served in the Office of the Chief of Naval Operations as head of submarine research and development and subsequently as Deputy Director for Systems Analysis.

In 1976, Captain Will assumed command of the SSBN tender USS CANOPUS (AS 34) taking it from Charleston Naval Shipyard to Rota, Spain. From this command, he returned to the Pentagon to serve as military advisor in Department of Defense's Office of Naval Warfare. His final naval tour was in the CNO's Office as the Deputy Director for Strike, Amphibious and Mine Warfare. He retired in 1982.

During his naval career, Captain Will was awarded the Legion of Merit, the Department of Defense Meritorious Service Medal, the Navy Meritorious Service Medal, and the Navy Commendation Medal.

Captain Will is currently a Senior Vice President with Sonalysts, Inc. living with his wife Linda in the Washington, DC area. They have four children and six grandchildren.

DAVID A. BURKHARD

**COMMANDER
UNITED STATES NAVY**

**COMMANDING OFFICER
USS PUFFER (SSN 652)**



Commander Burkhard graduated from the University of West Florida in Pensacola in June 1978. After attending Nuclear Power Training at Orlando, Florida and S7G prototype at Ballston Spa, New York, he graduated with distinction from basic submarine training at Groton, Connecticut.

In November 1979, he reported to USS WILLIAM H. BATES (SSN 680), where he served as Electronics Material Officer, Reactor Controls Assistant, and Sonar/Fire Control Officer. In May 1983, he transferred to the Naval Reserve Officer Training Corps Unit at Tulane University in New Orleans, Louisiana for duty as Naval science instructor. He then returned to sea, reporting to USS PLUNGER (SSN 595) as Engineer Officer in December 1985, where he served until her inactivation in February 1990. In May 1990, he was assigned as Executive Officer USS HADDO (SSN 604), where he served until her inactivation in June 1991. He also served as Executive Officer on USS SALT LAKE CITY (SSN 716) from July 1991 until July 1992. In August 1992 he reported to the Office of the Chief of Naval Operations, serving as head, submarine tactical weapons section for Director, Submarine Warfare Division.

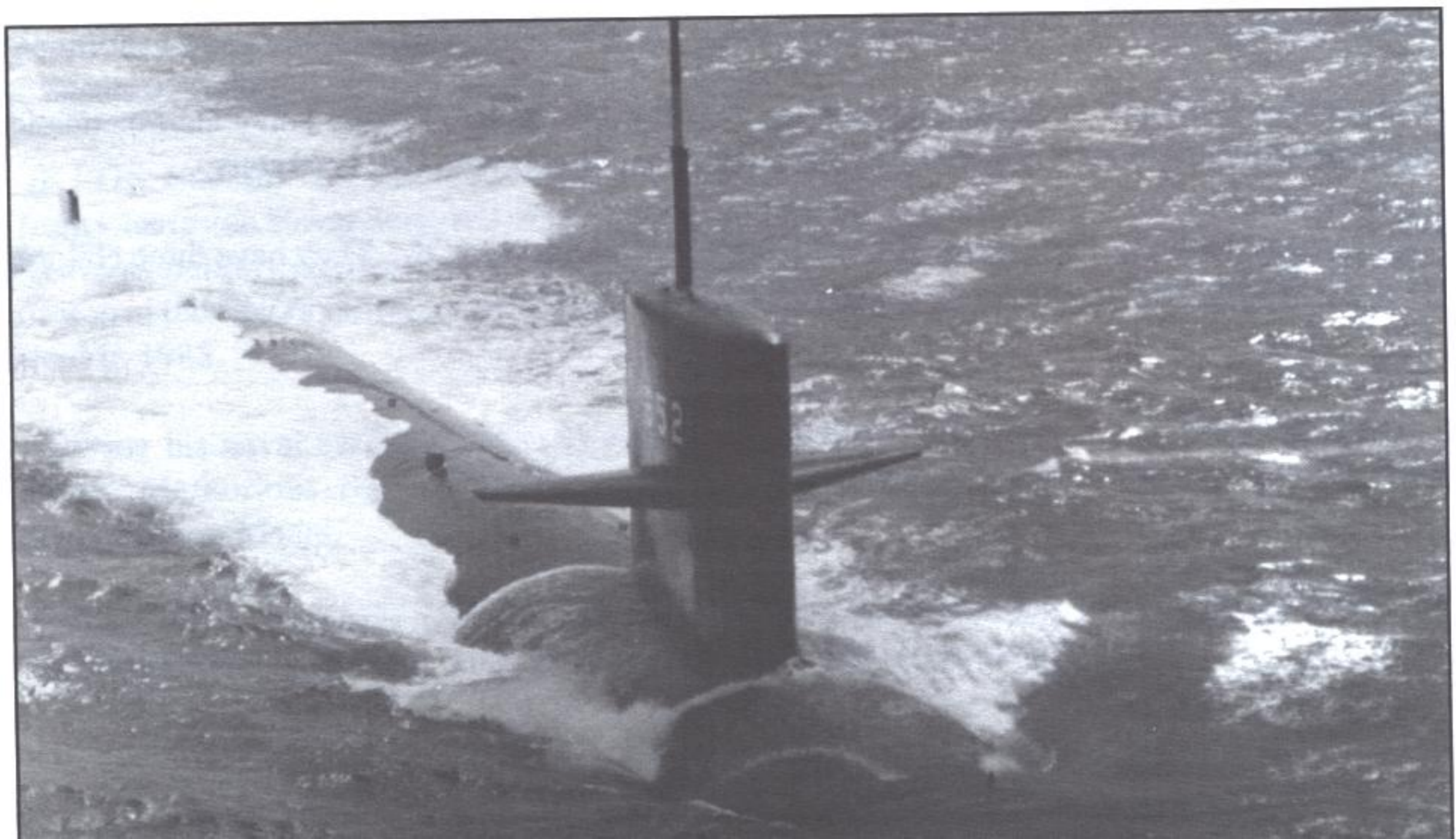
Commander Burkhard is entitled to wear the Meritorious Service Medal, Navy Commendation Medal with three gold stars, and the Navy Achievement Medal with two gold stars.

He is married to the former Agnes McCaffrey of Oakland, New Jersey. They have three children, David, Catherine and Laura.

VITAL STATISTICS

Built By
Ingalls Shipbuilding Corporation
Division of Litton Industries
Pascagoula, Mississippi

Keel Laid	8 February 1965
Launched	30 March 1968
Commissioned	9 August 1969
Ship's Sponsor	Mrs. Grace Colwell
Length	292 Feet
Beam	32 Feet
Displacement Surfaced	4246 Tons
Displacement Submerged	4780 Tons
Speed	Greater than 25 Knots
Diving Depth	Greater than 600 Feet
Crew Compliment	15 Officers and 131 Enlisted



A HISTORY OF USS PUFFER (SSN 652)

PUFFER's life as a ship began on 30 March 1968, when **CDR John M. WILL, Jr.**, and his pre-commissioning crew rode her down the ways at Ingalls Shipbuilding Division of Litton Industries at Pascagoula, Mississippi. During the next year and a half, PUFFER was certified to operate her nuclear propulsion plant and underwent extensive dock and sea trials. PUFFER was commissioned on 9 August 1969. Two days later, PUFFER departed for Hawaiian waters, where she operated locally for crew training and preparation for a Post Shakedown Availability (PSA) at Mare Island Naval Shipyard, Vallejo, California in December 1969.

In March 1970, PUFFER completed PSA and returned to sea, arriving in her new homeport, Pearl Harbor, Hawaii on 3 May 1970. In October 1970, PUFFER deployed for a two month submerged training cruise, returning to Pearl Harbor, Hawaii in December, 1970. Following an upkeep and training period, PUFFER departed for her first Western Pacific (WESTPAC) deployment on 17 March 1971. As a member of the Seventh Fleet, the ship visited Adak, Alaska; Guam, M.I.; Yokosuka, Japan; Pusan, Korea; Buckner Bay, Okinawa; Subic Bay, Philippines; and Hong Kong, B.B.C. PUFFER returned to Pearl Harbor from WESTPAC in September, 1971.

On 4 January 1972, **CDR Daniel L. COOPER** relieved CDR John M. WILL, Jr., to become PUFFER's second Commanding Officer.

On 1 June 1972, the ship left for the Puget Sound area to become the first Pacific Fleet submarine certified to carry the sophisticated MK-48 Torpedo. PUFFER returned to Pearl Harbor and, on 4 August 1972, again deployed to the Western Pacific as a member of the Seventh Fleet. During this deployment, the ship visited Yokosuka, Japan; Hong Kong, B.B.C., and Subic Bay, Philippines. PUFFER returned to Pearl Harbor on 20 February 1973 for upkeep and local operations to support units of the Pacific Fleet. PUFFER was the first submarine to shoot the MK-48 Torpedo on the Torpedo Test Range at Barking Sands, Kauai. PUFFER departed Hawaii and transited to Bremerton, Washington, arriving on 14 July 1973 to commence a regular overhaul at Puget Sound Naval Shipyard.

On 1 February 1974, **LCDR Alton K. THOMPSON** relieved CDR Daniel L. COOPER to become PUFFER's third Commanding Officer.

Following comprehensive sea trials, PUFFER completed the shipyard overhaul on 20 October 1974. Extensive weapons systems and acoustic trials were conducted in Puget Sound and along the California coast prior to the ship's departure for Hawaii. PUFFER's third Western Pacific deployment commenced on 28 August 1975. PUFFER participated in antisubmarine warfare exercises and visited Subic Bay, Philippines; Guam, M.I.; and Hong Kong, B.B.C. For superior performance from 28 August 1975 to 15 January 1976, PUFFER was awarded the Navy Unit Commendation. The ship returned to Pearl Harbor on 1 March 1976.

On 20 October 1976, **CDR Donald R. MATHIOWETZ** relieved CDR Alton K. THOMPSON to become PUFFER's fourth Commanding Officer.

PUFFER received her second Navy Unit Commendation for exceptionally superior performance from November to December 1976. PUFFER also received the COMSUBRON ONE Battle Efficiency "E" for 1976. PUFFER's fourth Western Pacific deployment commenced 21 April 1977. PUFFER visited Subic Bay, Philippines; Hong Kong, B.B.C.; Guam, M.I.; and Sattahip, Thailand. PUFFER was awarded a Meritorious Unit Commendation for exceptionally high performance from 21 June 1977 to 8 August 1977.

PUFFER returned from deployment on 14 September to prepare for overhaul, departing Hawaii on 6 December 1977 for Bremerton, Washington. PUFFER's second major shipyard overhaul commenced in early 1978, including a reactor refueling and modernization of the ship's fire control and sonar equipment. The ship completed overhaul in May 1979. After comprehensive weapons systems and acoustic trials, PUFFER returned to her home port, Pearl Harbor, by way of San Diego. In the fall of 1979, the ship was recertified for the MK-48 Torpedo and for the first time was certified to carry the Harpoon missile.

On 2 February 1980, **CDR Howard W. HABERMEYER, Jr.** relieved CDR Donald R. MATHIOWETZ to become PUFFER's fifth Commanding Officer.

Between February and May 1980, PUFFER completed Pre-Overseas Movement (POM) operations and an upkeep. In May, PUFFER departed for her fifth deployment to the Western Pacific. PUFFER visited Perth, Australia; Hong Kong, B.B.C.; Diego Garcia; Guam, M.I.; and Subic Bay, Philippines. PUFFER earned second place in the 1980 NEY Memorial Award for the Small Mess Afloat category and the COMSUBRON ONE Supply "E" in October 1980. In addition, PUFFER received her third Navy Unit Commendation.

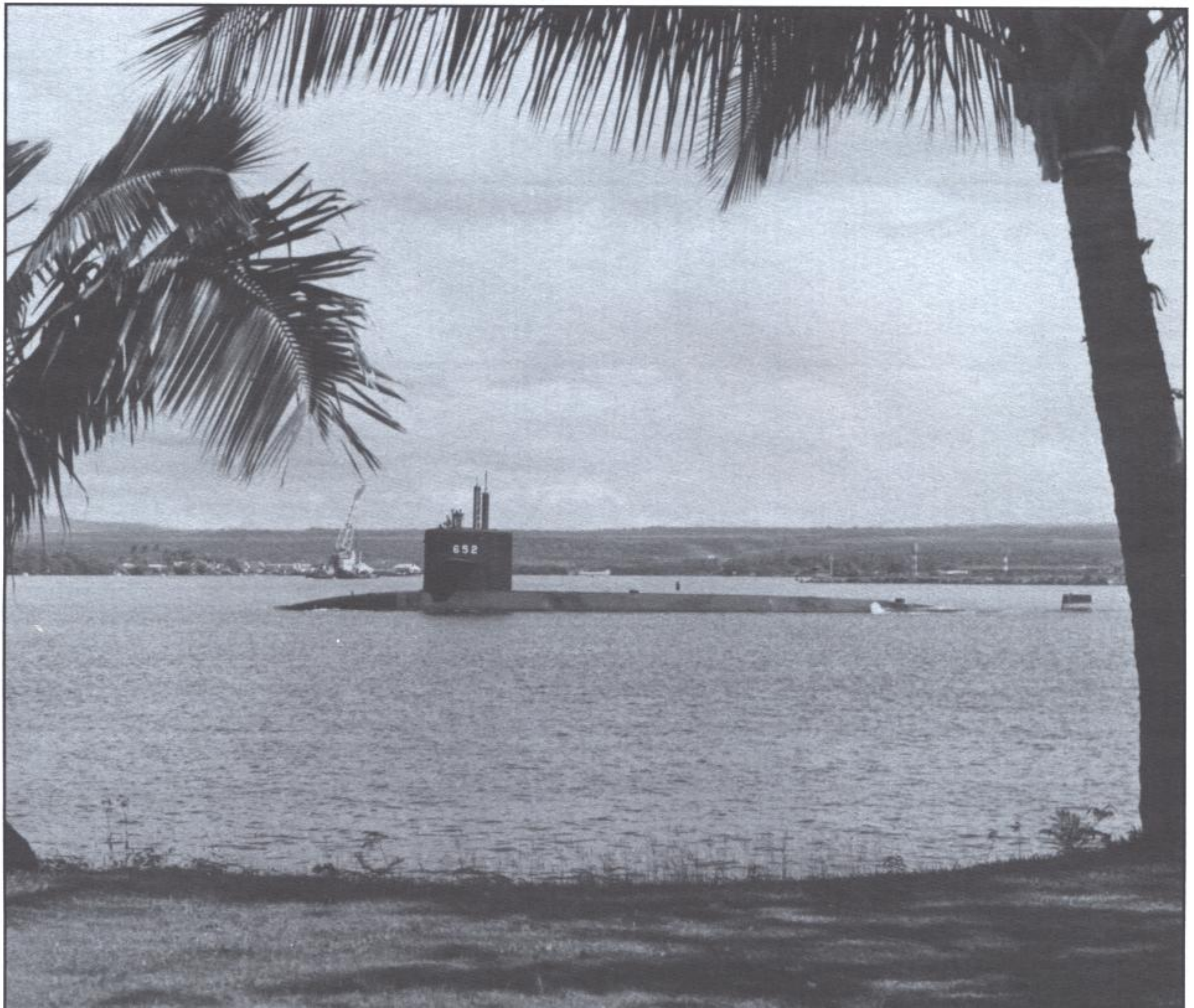
The ship conducted local operations from November, 1980 until May, 1981, when PUFFER commenced a Selected Restricted Availability, which was completed in August, 1981. During 1981, PUFFER was awarded the COMSUBRON ONE Battle Efficiency "E", Engineering "E", and Supply "E" for outstanding performance. In November 1981, PUFFER deployed for her sixth Western Pacific deployment, during which the ship visited Subic Bay, R.P.; Perth, Australia; and Yokosuka, Japan. The ship returned to Pearl Harbor on 14 May 1982 and, in September, PUFFER was awarded her second consecutive COMSUBRON ONE Battle Efficiency "E" for outstanding performance for 1982. For continued exceptionally superior performance, PUFFER received her fourth Navy Unit Commendation.

In November 1982, PUFFER deployed for her seventh Western Pacific deployment, visiting Yokosuka, Japan in January 1983 for a port visit/upkeep. PUFFER returned to Pearl Harbor on 26 January 1983 and successfully completed Mine Readiness Certification.

On 3 June 1983, **CDR Bernard D. GREESON** relieved **CAPT Howard W. HABERMEYER** to become PUFFER's sixth Commanding Officer.

On 1 August 1983, PUFFER again deployed to the Western Pacific, visiting Hong Kong, B.B.C, for a port visit, and Subic Bay, Philippines for upkeep. PUFFER completed her eighth deployment and returned to Hawaii on 30 October 1983. During the following months, PUFFER conducted local operations was awarded the COMSUBRON ONE Deck Seamanship Efficiency "E" for 1983.

In January 1984, PUFFER deployed on Chief of Naval Operations Project, 670-OT-I, followed by and unscheduled deployment to the Middle Pacific in February 1984. On 1 April 1984, PUFFER entered a three month Selected Restricted Availability which included a Steam Generator Chemical Cleaning. This restricted availability was completed on 1 July 1984. Returning to operational status, PUFFER was engaged in intensive training operations in preparation for deployment to the Eastern Pacific. On 30 July 1984, PUFFER deployed to the Eastern Pacific visiting San Diego and Alameda, California, returning to Pearl Harbor on 28 August 1984.



BAND SELECTIONS
Grand Pacific Ceremonial Band



ARRIVAL OF OFFICIAL PARTY



NATIONAL ANTHEM



INVOCATION

Lieutenant Scott A. Orth, CHC, USN



WELCOME REMARKS

Commander David A. Burkhard, USN
Commander, USS PUFFER



INTRODUCTION OF PRINCIPAL SPEAKER

VADM (Ret) Daniel L. Cooper
Second Commanding Officer, USS PUFFER



PRINCIPAL SPEAKER

Captain (Ret) John M. Will Jr.
First Commanding Officer, USS PUFFER



REMARKS

*Commander David A. Burkhard, USN
Final Commanding Officer, USS PUFFER*



**CEREMONIAL HAULING DOWN OF THE
COMMISSIONING PENNANT**



SECURING OF THE WATCH



BENEDICTION

Lieutenant Scott A. Orth, CHC, USN



DEPARTURE OF OFFICIAL PARTY



BAND SELECTIONS

Grand Pacific Ceremonial Band

On 29 October, 1984, **CDR Clinton E. WRIGHT** relieved CAPT Bernard D. GREESON to become PUFFER's seventh Commanding Officer.

Following deployment preparations, PUFFER departed on her ninth Western Pacific Deployment on 31 January 1985. Ports of call were made in Freemantle, Australia; Yokosuka, Japan; Subic Bay, Philippines; and Diego Garcia, British Indian Ocean Territories. PUFFER returned to Pearl Harbor on 5 August 1985. PUFFER conducted local operations through January 1986 and departed on a Northern Pacific deployment 12 February 1986. Upon returning to Pearl Harbor in April, local operations and pre-overhaul testing were conducted through August 1986. On 24 August, PUFFER deployed on another Northern Pacific deployment with less than thirty hours notice.

On 17 October 1986, **CDR Charles B. REIGNER** relieved CDR Clinton E. WRIGHT to become PUFFER's eighth Commanding Officer.

PUFFER departed on a scheduled Northern Pacific Deployment on 7 November 1986. Returning on 5 December 1986, PUFFER's homeport was officially changed to Bremerton, Washington in preparation for her third overhaul at Puget Sound Naval Shipyard. On 14 January 1987, PUFFER relocated to Puget Sound Naval Shipyard (PSNS) and entered Drydock Number 6 on 9 February 1987. PUFFER continued her overhaul in December 1988, finishing ahead of schedule. PUFFER departed Washington in January 1989 and transited to her new homeport in San Diego, California, becoming the newest member of COMSUBRON THREE. PUFFER spent the next few months undergoing extensive post-overhaul material and weapons certifications during local operations off the Southern California coast.

On August 10 1989, **CDR Thomas G. KYLE** relieved CDR Charles B. REIGNER to become PUFFER's ninth Commanding Officer.

PUFFER deployed on 8 December 1989 for her tenth Western Pacific deployment and first since 1985. During the next six months, PUFFER visited Guam, M.I.; Chinhae, South Korea; Pattaya Beach, Thailand; Subic Bay, Philippines; and returned to Yokosuka, Japan. On 6 June 1990, PUFFER completed her six-month deployment, returning to San Diego.

PUFFER prepared for her first Arctic Deployment in July and, on 24 August, departed for the Arctic Ocean. During her two-month operation, PUFFER made twenty-five surfacings in the Arctic, including one at the North Pole. PUFFER was underway the first two months of 1991 for CNO Special Operations returning to port on 16 February 1991. On 20 May 1991, PUFFER commenced a Selective Restricted Availability (SRA), completing it on 15 July 1991. PUFFER was underway in July and August 1991 for CNO Special Operations.

On 17 September 1991, PUFFER began her eleventh Western Pacific deployment. Ports of call included Yokosuka, Japan; Adak, Alaska; Guam, M.I.; and Brisbane, Australia. PUFFER returned home to San Diego on 17 March 1992 and was awarded her fourth Meritorious Unit Commendation for her superb operations during this deployment. In April 1992, PUFFER was certified for the new MK-48 ADCAP torpedo.

On May 12, 1992, **CDR Richard A. WRIGHT** relieved CDR Thomas G. KYLE to become PUFFER's tenth Commanding Officer.

In June 1992, PUFFER commenced a ten week underway period, including operations with Special Forces and culminating in a successful Operational Test Launch (OTL) of a Tomahawk Land Attack Missile (TLAM). PUFFER's outstanding performance in 1992 earned her the first COMSUBRON THREE Tactical "T" for Tactical Excellence, recognition as the "Top Torpedo and Missile Shooter". Additionally, PUFFER earned her third consecutive COMSUBRON THREE Red "DC" for Damage Control excellence.

PUFFER completed preparations for a second deployment to the Arctic Ocean and, on 17 March 1993, deployed to the Arctic Ocean. The ship surfaced through the ice, including at the North Pole on 27 April 1993, to conduct research and development experiments. During this deployment, PUFFER circumnavigated the North American Continent, visiting Faslane, Scotland and Puerto Rico enroute and transited the Panama Canal. On 15 June 1993, PUFFER returned home from her Arctic deployment and was awarded the Navy Arctic Service Ribbon and Sea Service Deployment Ribbon.

PUFFER's outstanding performance in 1993 earned her a second consecutive COMSUBRON THREE Tactical "T" for Tactical Excellence and an Engineering "E" for engineering excellence. From 23 November 1993 to 31 January 1994, PUFFER completed a Selected Restricted Availability (SRA), followed by preparations for her twelfth and final Western Pacific deployment. She deployed on 15 August 1994 and visited Pearl Harbor, Hawaii; Yokosuka, Japan; Guam, M.I.; Sasebo, Japan; Hong Kong, B.B.C; and Suva, Fiji. PUFFER returned home from her final deployment on 15 February 1995.

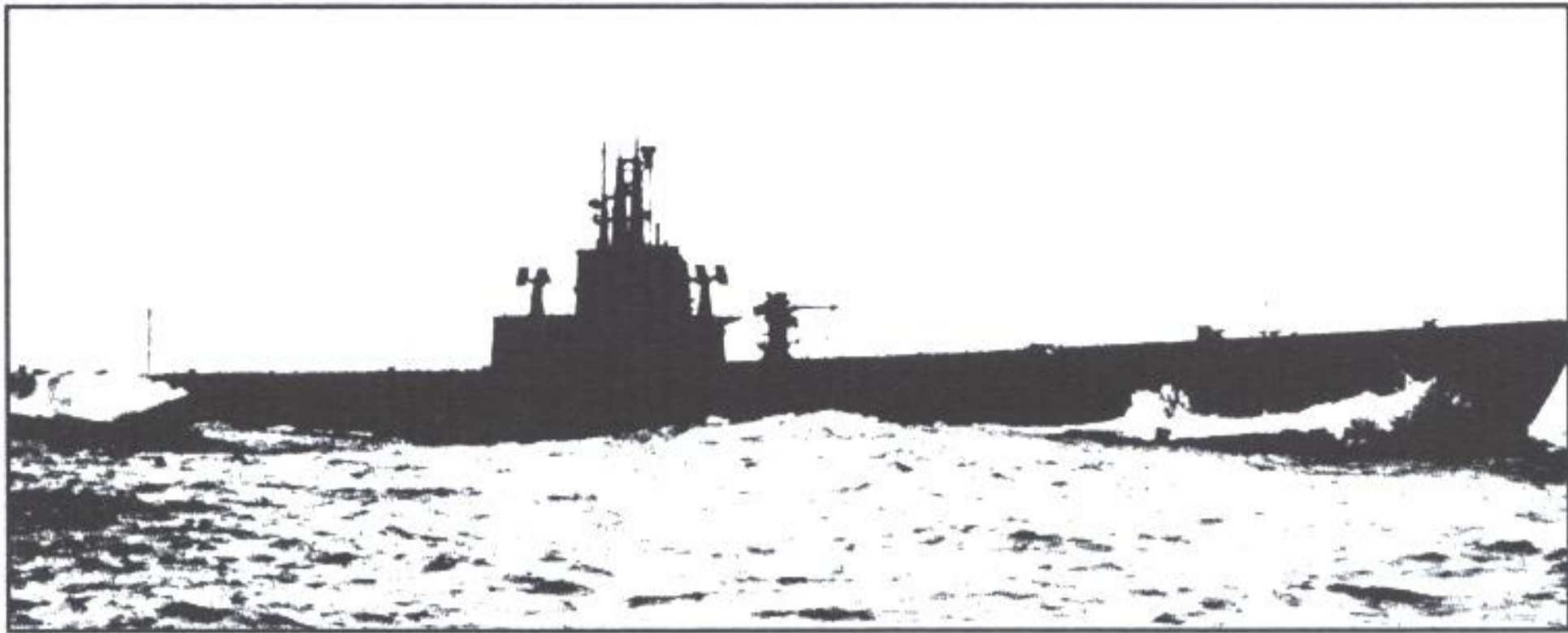
On 10 April 1995, **CDR David A. BURKHARD** relieved CDR Richard A. WRIGHT as PUFFER's eleventh and final Commanding Officer.

PUFFER continued with local operations and preparations for inactivation. PUFFER is currently scheduled to change homeport from San Diego, California to Bremerton, Washington in October 1995 for inactivation in mid-1996.



USS PUFFER (SS 268)

OUR COMBAT HERITAGE



PUFFER (SS-268) was launched 22 November 1942 by Manitowoc Shipbuilding Co., Manitowoc, Wisconsin; sponsored by Mrs. Ruth B. Lyons; and commissioned 27 April 1943, Lieutenant Commander M. J. JENSEN in command.

After trials in Lake Michigan, PUFFER departed for the Pacific via the Mississippi River and Panama Canal, arriving at Darwin, Australia, 6 September 1943. She departed the following day for her first war patrol in the Makassar Strait and Celebes Sea area. On 17 September she torpedoed and sank an enemy freighter and damaged a transport. On 9 October she fired two torpedoes into the side of a large merchantman and, for her efforts, received an extensive 31-hour counter-attack by angry escorts. PUFFER returned to Darwin on 17 October 1943, and then steamed to Fremantle, Australia, for refit and repairs.

On 24 November PUFFER sailed on her second war patrol, in the Sulu Sea and the approaches to Manila. On 20 December she sank Japanese destroyer Fuyo, and on 1 January 1944, freighter Ryuyo Maru. She also sank a picket trawler by gunfire and took the skipper prisoner. Two additional freighters and one auxiliary naval tender were damaged. PUFFER returned to Fremantle on 12 January 1944 for refit.

PUFFER departed for her third war patrol on 4 February, which was conducted in the South China Sea. On 22 February an enemy transport was sighted off the Natoena Islands on the lane between Singapore and Brunei, Borneo. PUFFER fired a spread of torpedoes that sent transport Teikyo Maru to the bottom. No more contacts were made on the patrol and PUFFER returned to Fremantle 4 April 1944.

On 30 April, PUFFER departed for her fourth war patrol in Madoera Straits, Makassar Straits, and the Sulu Sea. She acted as life guard for the first Allied carrier strike on Soerabaja, sank freighter Shinryu Maru 18 May, then on 5 June, attacked three tankers, sinking Ashizuri and Takasaki and damaging the other. She returned to Fremantle 21 June.

On 14 July 1944, PUFFER departed for her fifth war patrol, in Makassar Straits, the Celebes, Sulu, and South China Seas. In the northern approaches to Makassar Strait she contacted and sank an enemy submarine tender. The thwarted escorts subjected PUFFER to a barrage of 30 depth charges. On 12 August she sank tanker Teikon Maru, a freighter, and damaged another tanker which was already beached. She terminated her patrol at Pearl Harbor, then she continued on to Mare Island for overhaul.

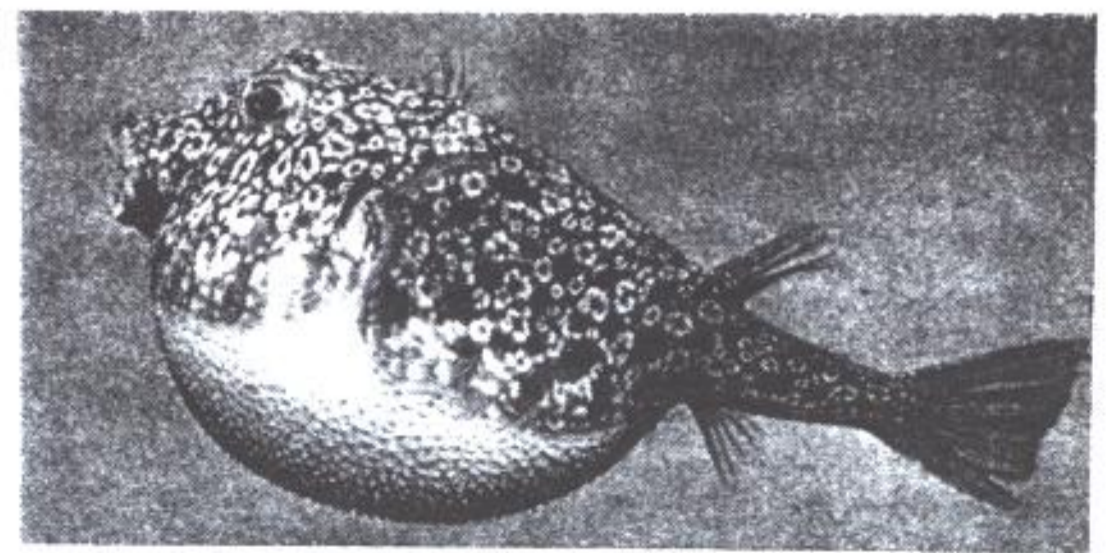
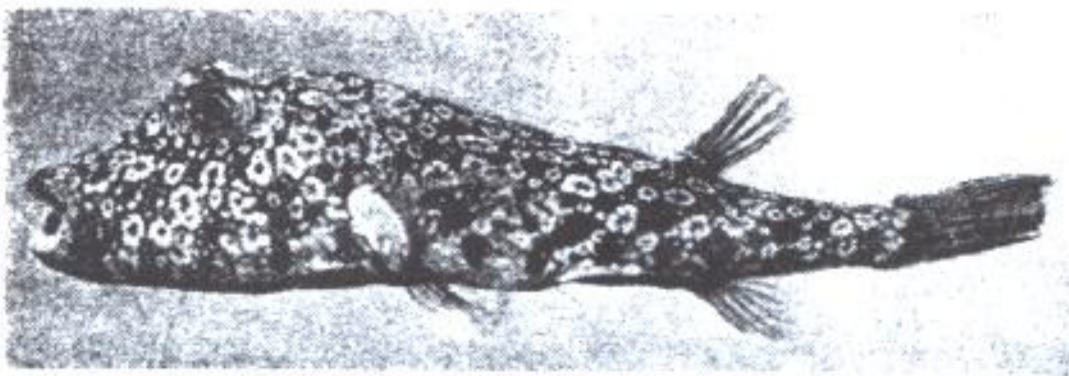
Following refresher training at Pearl Harbor, PUFFER got underway on her sixth war patrol 16 December. Operating in the Nansei Shoto area, she sank Coast Defense Vessel No. 42 on 10 January 1945, and damaged a destroyer, three freighters, and a tanker, all prior to her arrival at Guam, 17 January. By 11 February, PUFFER was underway again and following patrol in Luzon Straits and the South China Sea where she bombarded Pratas Island, she made an anti-shipping sweep of the Wake Island area, returning to Midway Island to complete her seventh patrol.

Refitted at Midway, she departed 20 May enroute to the South China and Java Seas to conduct her eighth war patrol. In a surface sweep of the northern Bali coast on 5 July, PUFFER destroyed, by gunfire, two sea trucks and six landing craft, and inflicted extensive damage to harbor installations at Chelukan Bawang and Buleng, Bali. Following a brief stop at Fremantle, she headed north for her ninth and final war patrol in the Java Sea.

Completing that patrol with the cessation of hostilities, PUFFER headed for Subic Bay, then to the United States, reaching San Francisco 15 October 1945. PUFFER decommissioned 28 June 1946 and was berthed at Mare Island as a unit of the Pacific Reserve Fleet.

In addition to the Navy Unit Commendation, PUFFER received nine battle stars for her World War II service.

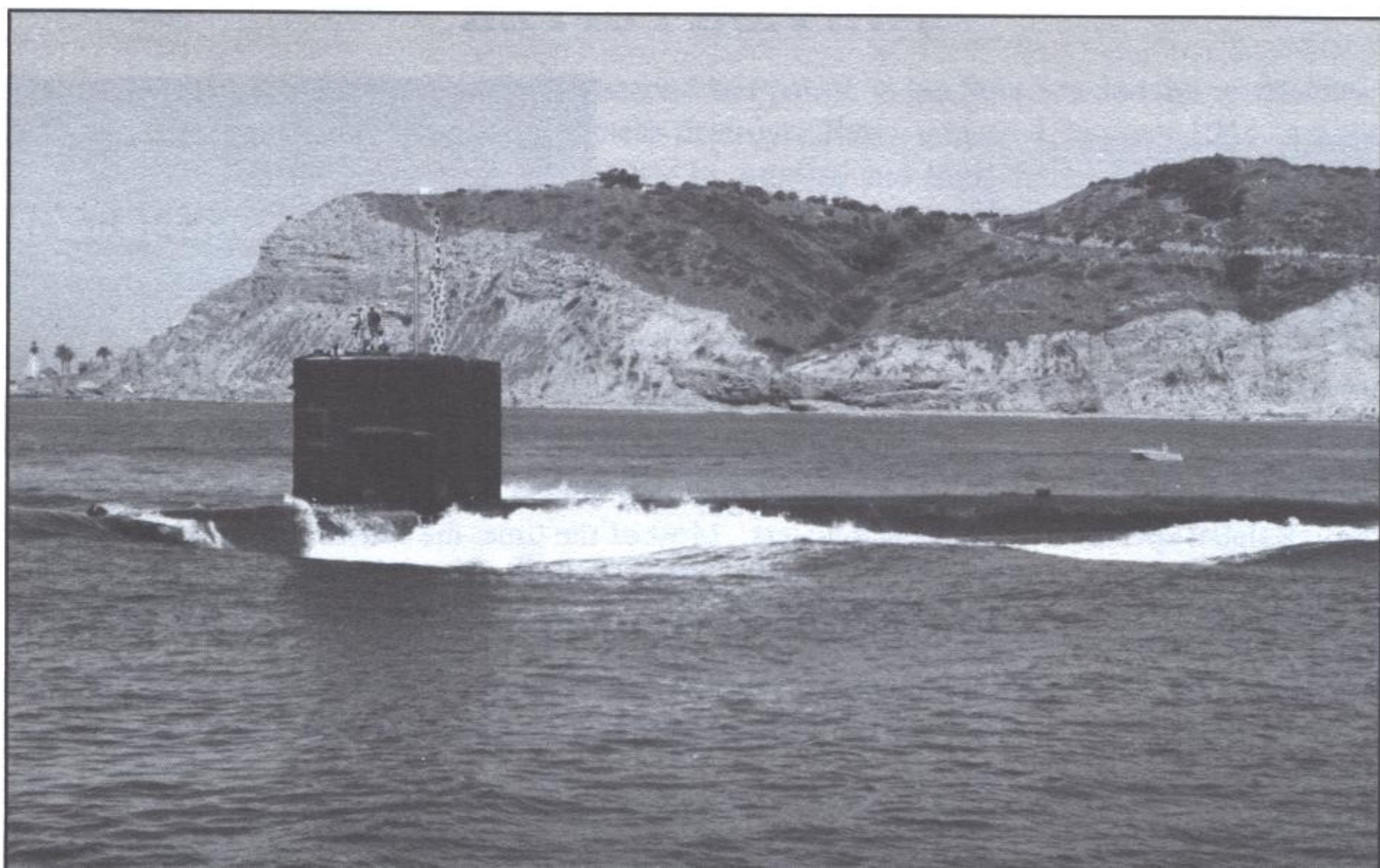
THE FISH PUFFER



The PUFFER is the common name of fishes that inflate their bodies like balloons. They are sometimes called Swellfish or Globefish. A common kind is the Northern Puffer of the Atlantic Coast. Related species live in tropical waters. Most of the time, the Puffer looks like an ordinary fish that has a large head and protruding teeth. When disturbed, it inflates its stomach with air to twice its size. The Puffer then floats belly upward on the water's surface until the danger has passed.

UNIT AWARDS

NAVY UNIT COMMENDATION	1976
NAVY UNIT COMMENDATION	1976
Battle "E" for COMSUBRON ONE	1976
MERITORIOUS UNIT COMMENDATION	1977
Supply "E" for COMSUBRON ONE	1980
NAVY UNIT COMMENDATION	1980
Battle "E" for COMSUBRON ONE	1981
Engineering "E" for COMSUBRON ONE	1981
Supply "E" for COMSUBRON ONE	1981
MERITORIOUS UNIT COMMENDATION	1981
Battle "E" for COMSUBRON ONE	1982
NAVY UNIT COMMENDATION	1982
Deck Seamanship Efficiency "E" for COMSUBRON ONE	1983
Damage Control Red "DC" for COMSUBRON THREE	1990
MERITORIOUS UNIT COMMENDATION	1990
Damage Control Red "DC" for COMSUBRON THREE	1991
MERITORIOUS UNIT COMMENDATION	1992
Tactical "T" for COMSUBRON THREE	1992
Damage Control Red "DC" for COMSUBRON THREE	1992
Tactical "T" for COMSUBRON THREE	1993
Engineering "E" for COMSUBRON THREE	1993



COMMAND AT SEA



"Only a seaman realizes to what great extent an entire ship reflects the personality and ability of one individual, her Commanding Officer. To a landsman, this is not understandable - and sometimes it is difficult for us to comprehend - but it is so!

A Ship at sea is a different world in herself, and in consideration of the protracted and distant operations of the fleet units, the Navy must place great power, responsibility and trust in the hands of those leaders chosen for command.

In each ship there is one man who, in the hour of emergency or peril at sea, can turn to no other man. There is one who alone is ultimately responsible for the safe navigation, engineering performance, accurate gunfire and morale of his ship. He is the Commanding Officer. He is the ship!

This is the most difficult and demanding assignment in the Navy. There is not an instant during his tour as Commanding Officer that he can escape the grasp of command responsibility. His privileges, in view of his obligations are almost ludicrously small; nevertheless, this is the spur which has given the Navy its greatest leaders.

It is duty which most richly deserves the highest, time-honored title of the seafaring world....CAPTAIN".

Joseph Conrad

COMMANDING OFFICERS OF USS PUFFER (SSN 652)

CDR J. M. WILL JR., USN	MARCH 1968-JANUARY 1972
CDR D. L. COOPER, USN	JANUARY 1972-FEBRUARY 1974
LCDR A. K. THOMPSON, USN	FEBRUARY 1974-OCTOBER 1976
CDR D. R. MATHIOWETZ, USN	OCTOBER 1976-FEBRUARY 1980
CDR H. W. HABERMEYER, USN	FEBRUARY 1980-JUNE 1983
CDR B. D. GREESON, USN	JUNE 1983-OCTOBER 1984
CDR C. E. WRIGHT, USN	OCTOBER 1984-OCTOBER 1986
CDR C. B. REIGNER, USN	OCTOBER 1986-AUGUST 1989
CDR T. G. KYLE, USN	AUGUST 1989-MAY 1992
CDR R. A. WRIGHT, USN	MAY 1992 - APRIL 1995
CDR D. A. BURKHARD, USN	APRIL 1995 - Present

PLANKOWNERS

CDR J. M. WILL, Jr., USN
COMMANDING OFFICER

LCDR D. M. CARRE', Jr., USN
EXECUTIVE OFFICER

LCDR D. L. MULLINS, USN, Navigator/Operations Officer
LCDR R. L. STEELE, USN, Engineer Officer
LT R. A. NEWKIRK, USN, Damage Control Assistant
LT M. F. OLIVER, USN, Weapons Officer
LT G. M. HEWITT, USN, Main Propulsion Assistant
LT R. C. DEPEW, USN, Communications Officer

LT R. E. STEVENS, USN, Assistant Engineer
LT G. C. BEARD, Jr., USN, Sonar Officer
LTJG P. J. BROWN, USN, Electrical Officer
LTJG S. I. ANDERSON, USN, Reactor Controls Officer
LTJG F. P. McCARTHY, SC, USNR, Supply Officer
W-1 G. J. BROWN, USN, Engineering Assistant

CHIEF PETTY OFFICERS

STCS(SS) E. G. GALLANT, Jr.
Chief of the Boat

TMCS(SS) R. A. BROWN
RMC(SS) B. F. FRISCH
MMC(SS) J. D. HOLSTED

QMC(SS) W. J. KOMULA
MMC(SS) M. E. KOVALYCSIK
ICC(SS) G. R. LESTER

HMC(SS) C. D. SLOAN
ETCM(SS) J. W. TAYLOR

ENLISTED PERSONNEL

SD2(SS) I. ARTIS
ETN2(SU) R. BARKER
SK2(SS) J. BLEVINS
QM1(SS) G. BLATTNER
TM1(SS) C. BROWN, Jr.
EM1(SS) C. BRUNNERT
ETN2(SU) T. CARPENTER
FTG1(SS) J. CLARK
SA(SU) J. COLOMBINI
TM2(SS) R. COOL
SN(SG) R. CORDELL
EM2(SU) R. CORDERMAN
MM1(SS) W. CRUTCHFIELD
ET1(SS) G. CURRY
MM1(SS) J. CUSTER
IC3(SU) D. DEEM
MM2(SU) D. DEEM
ST1(SS) D. DIBBLE
YNSN(SU) D. DICK, II
CSSN(SU) T. DOWELL
IC1(SS) E. DUBOIS
QM3(SS) D. FOLSOM
RM2(SU) C. GEER
EN1(SS) J. GINN
SK3(SG) G. GROOVER
RM3(SU) G. HALES
TM3(SU) G. HANSEN
MM1(SU) L. HELIE
ETR2(SS) R. HEWITT
EN2(SS) F. HILL, III
MM1(SS) S. HILL

ST1(SS) K. HUNT
MM3(SS) K. ISEBRAND
RM2(SS) S. ISRAEL
SN(SU) J. JEFFERSON
MM2 J. JOHNSON
STS3(SU) S. JOHNSON
ETR2(SS) R. KELLY
ET1(SS) R. KELLY
QM2(SS) D. LAMB
FN(SS) J. LEE
EM1(SU) G. LEOPOLD
STS2(SU) T. LICHTENBERG
SK2(SS) W. LOWERY
ETR2(SS) B. MAJESKI
RM1(SS) E. MANFULL
TM1(SS) L. MARTINEZ
TN A. MCAFEE, Jr.
ETR2(SS) P. McWATERS
EM1(SS) J. MITCHELL
ETN3(SU) O. MITCHELL
MM2(SU) J. MOSS
MM2(SS) J. NAYLOR
CS1(SS) T. NOWLIN
YN1(SS) P. OGG
TM2(SS) J. ONDO, Jr.
ET1(SS) L. OSTERFELD
ETN3(SU) E. PATTERSON
MM1(SS) G. PAYNE
MM2(SU) N. PERLOW
SN(SU) R. PICKETT
IC1(SS) W. POSEY

IC2(SS) J. PRATT
SN(SU) E. PROWS, Jr.
EN1(SS) G. RABALAIS
QM3(SS) J. RANKIN
IC1(SS) J. RICHARDS
STS2(SS) L. RILEY
TM3(SU) R. ROMAN
IC2(SU) E. SARGENT
MM1(SS) D. SCHOOLER
STS3(SU) G. SEVERSON
CS2 D. SINCLAIR
MM1(SS) K. SMITH
WM3(SU) W. SMITH, Jr.
TN D. STACK
FA(SU) R. SWENSEN
FTG2(SU) M. SWENY
MM1(SS) J. TAYLOR
STS3(SU) M. THOMPSON
MM1(SS) H. THYSELL
TM2(SU) G. TOWNE
MM3(SS) K. TRICKEL
MM1(SS) D. VAUGHN
EM1(SS) R. WALLACE
SN(SU) T. WATSON
ETN2(SS) R. WEEKS
FTG2(SS) J. WHEATLEY
EM2(SU) M. WHISMAN
MM2(SU) R. WHITE
MM2(SU) J. WILLIAMS
EM2(SU) E. WILLISMSON
STS2(SU) R. WILSON

DECOMMISSIONING CREW

CDR D. A. BURKHARD, USN
COMMANDING OFFICER

LCDR B. K. NUTT, USN
EXECUTIVE OFFICER

LCDR L. C. ELLIS, USN, Combat Systems Officer
LCDR N. P. HILDRETH, USN, Engineer Officer
LT E. G. MERRILL, USN, Navigator/Operations Officer
LT K. F. GERLACH, USN, Damage Control Assistant
LT M. G. METZGER, USN, Sonar Officer
LT C. A. GARRETT, USN, Communications Officer

LTJG R. L. BARNES, SC, USNR, Supply Officer
LTJG D. T. PHAM, USN, Main Propulsion Assistant
LTJG S. Z. REIFF, USN, Chemical & Radcon Asst.
LTJG L. T. DORN, USN, Electrical Officer
LTJG S. P. BALTHAZOR, USN, Assistant Engineer
LTJG D. C. LINDSTROM, USN, Reactor Controls Officer

CHIEF PETTY OFFICERS

MMCS(SS) M. E. METCALF
Chief of the Boat

FTCS(SS) R. BURSE
YNCS(SS) R. W. FICKLE
J. B. NEW
ICC(SS) G. T. CAMPISI
SKC(SS) K. D. STAPLES
QMC(SS) M. B. HUNT

MMC(SS) M. E. TAYLOR
MSC(SS) P. J. MOCKLER
TMC(SS) D. G. CHESTNUT
MMC(SS) K. P. HOSKINS
RMC(SS) J. C. KIMBERLEY
ETC(SS) S. PICKERING

EMC(SS) S. G. OSGOOD
YNC(SS) J. J. LETTS
MMC(SS) R. C. FERNANDEZ
ETC(SS) D. R. GENTRY
MMC(SS) R. R. KOSEY

ENLISTED PERSONNEL

MS1(SS) C. ADAMS
ET2 M. C. ADAMS
EM3(SS) N. C. ALANO
MM3(SS) B. J. ALICIO
STS2(SS) K. A. ALLBEE
TM2(SS) C. E. ALSTON
FT2(SS) F. A. ALVARADO
MM1(SS) D. D. ANDERSON
TM1(SS) J. ARZOLA, Jr.
RM3(SS) J. M. ATKIN
ET2(SS) M. W. ATWELL
STS3(SS) D. A. BALL
MM2(SS) C. E. BASS
MM2(SS) D. R. BATES, Jr.
EM2(SS) J. J. BESSER
IC2(SS) H. L. BLOCKER
MM1(SS) P. C. BOBB
QMSN(SS) D. C. BROWN
EM2(SS) J. A. BROWN
EM2(SS) M. A. BROWN, Jr.
STS3(SU) C. E. BUSH
EM1(SS/DV) P. W. BURT, Jr.
ET1(SS) P. G. BUTCHART
MM3(SS) P. J. BYBEE
MMFN(SU) D. M. CANTWELL
MM1(SS) C. W. CASTLEBERRY
IC2(SS) J. E. CLARK
TMSN(SS) J. L. CLOW
STS3(SU) T. A. COLE
SN(SU) M. R. COMEIRO
MM3(SS) R. A. CRISTILLO
MM2(SS) J. C. CURTIS, Jr.
MSSN(SS) D. L. DAVIS

IC2(SS) K. D. DAWSON
EM2 R. A. DERRICK
ET3(SS) G. A. DILLARD
MM1(SS) R. J. DOWNHAM
FT3(SS) D. S. S. EDWARDS
ETSN(SU) G. P. ENGLISH
ET2(SS/DV) G. L. EPPOLITO
STS2(SS) S. D. FUSON
FT2(SS) T. G. GEORGE
MM3(SS) G. E. GILES
MM2(SS/DV) R. J. GOMBOS, Jr.
ET2(SS) R. K. GORMAN
STS3(SS) J. L. GRAHAM
RM1(SS) J. F. P. GRANT
MM2 K. M. GREEN
EM3(SS) D. E. GREENWOOD
YN3(SS) M. L. GUSTAFSON
MM3(SS) S. M. HAILEY
MM1(SS) C. D. HEERLYN
SN(SS) B. E. HICKS
STS2(SS) C. H. HILLBORN
SKSN(SS) D. D. HINES
MS2(SS) E. P. HINES
STS3(SS) B. D. HOLDEN
MM2(SS) B. T. HOWAT
MM1(SS) G. S. JACKSON
MS3(SS) D. JOHNSON
MM3(SS) F. E. LANTZ
MMFR(SU) E. J. LUX
MM2(SS) L. W. MARTIN
STS1(SS) D. R. MARTINEZ
STS3(SS) S. A. MAXEY

SK2(SS) S. L. McCLELLAN
MM2(SS) D. R. McKINNEY
ET1 T. D. MIDDLETON
YN2(SS) R. L. MOORE
ET3(SS) G. A. NELSON
FT3(SS) D. R. PADILLA
EM2(SS) M. A. PALMER
QM1(SS) J. A. PARFET
ET2(SS) M. C. PERRY
RM3(SS) M. A. PFENNING
MM2(SS) B. L. PRESTON
MSSN(SS) J. J. RAMIREZ
EM1(SS) J. P. REIFEL
QM3(SS) J. J. RINGLER
MM2(SS/DV) P. C. SANCHEZ
EM1(SS) F. A. SAUCEDA
RM3(SS) J. N. SMITH
SN(SS) S. C. SPARKS
MM2(SS) J.O. STRAWBRIDGE
MM3(SS) M. D. STUMPHY
MS2(SS) J. N. TETREALT
TM2(SS) R. D. THOMAS
MM3(SS) R. TODD, Jr.
MM1(SS) S. R. TOMKINS
MM2(SS) B. C. TREVINO
FT1(SS) G. L. VAJGRT, Jr.
ET1(SS) A. J. WALDMAN
MM2(SS) D. A. WARNER
EM1(SS) M. W. WILLIAMS
MM3(SU) C. W. WILSON
ET2(SS) T. J. WILSON
STS1(SS) J. A. WOODS



BREMERTON



RESTRICTED AREA 2
334-1240 (see note A)

RESTRICTED AREA 1
40-334-1240 (see note A)

Veterans Home
III
Annapolis