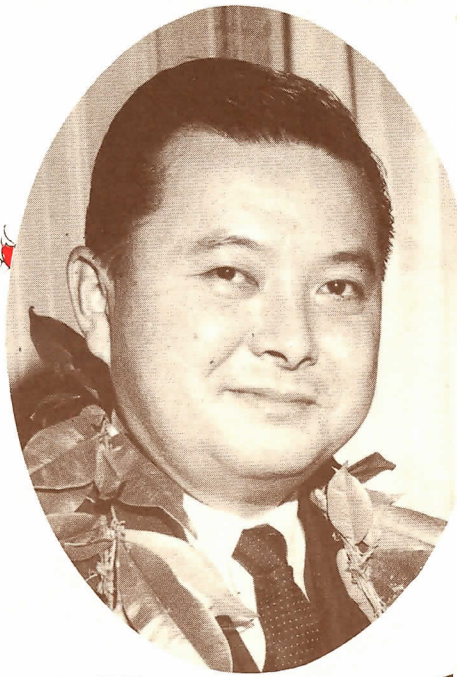
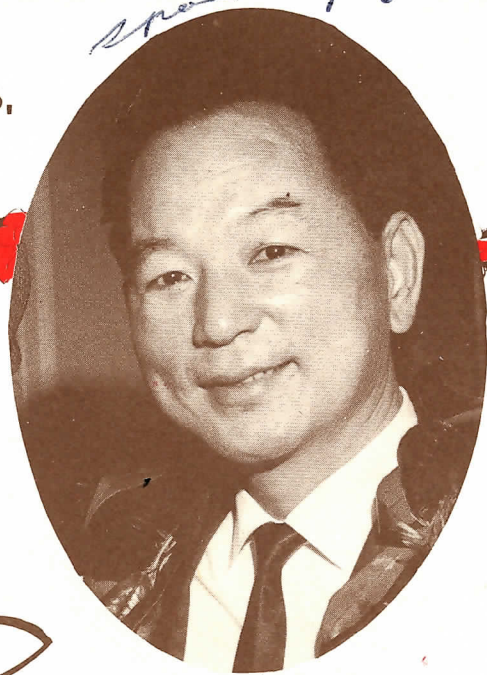


JANUARY 16,  
1965



U.S. SENATOR  
DANIEL K. INOUE



U.S. REPRESENTATIVE  
SPARK MATSUNAGA

WE  
PRESENT  
THE

# KAMEHAMEHA

*Launching*

SSBN



642

# MARE ISLAND

*Naval Shipyard*

VALLEJO

CALIFORNIA

## . . . Think Deep! -- Crew Advised



**R**EAR ADM. EUGENE B. FLUCKEY, USN, commander of the Pacific Submarine Force, termed Polaris submarines such as Mare Island's Kamehameha "absolute deterrents" to nuclear holocaust.

The Congressional Medal of Honor winner in World War II described the huge missile submarines as "always ready" within a moment's notice to launch retaliatory devastation.

Later in his remarks at Kamehameha's launching on January 16, Admiral Fluckey admonished the ship's officers and crew to "Think Deep!"

"Your survivability is assured," he declared, "for no enemy can afford the size force, or even man such a force to find you as you intelligently rove the lonely dark abyss of the ocean in deepest secrecy."

"So, Kamehameha reborn, grow well. Next year you will receive a royal and fitting welcome in the Hawaiian Islands. I say fitting because these islands are near the geographic center of the area known as the Pacific Basin. In this basin we have half of all the navigable water that there is in the world.

"Imua Imupa — a lamakila: Forward — On to Victory!"

## . . . A Submariner's Submarine

**S**HIPYARD COMMANDER AT MARE ISLAND, Rear Adm. Edward J. Fahy, USN, is an old hand at presiding over submarine launchings.

The admiral, who had the important billet of production officer at Mare Island back in 1957 when the Yard was building her first nuclear-propelled submarine, the Sargo, has seen all or most of Mare Island's 11 A-sub subs glide down the building ways in the intervening years.

And none gave him greater satisfaction than Kamehameha, sixth Polaris boat to be built by Mare Island in a current program of seven.

Admiral Fahy has reason to be proud. Kamehameha, at the time of her launching, was more nearly complete than any of her five Polaris predecessors at the time of their launchings. This means her outfitting will be speeded to completion within a few months, and the big sub with her deadly deterrent missiles will be ready to go "on station" in the Pacific in a relatively short time.

"The trademark of 'Mare Island' on a nuclear submarine has all the meaning of the trademark 'Sterling,' on fine silver," the shipyard commander has declared many times.



**D**ANIEL K. INOUE, U. S. Senator, a member of the famed "Go for Broke" 442nd Infantry Regimental Combat Team in World War II, proved himself a warrior in the same mold as King Kamehameha in that conflict.

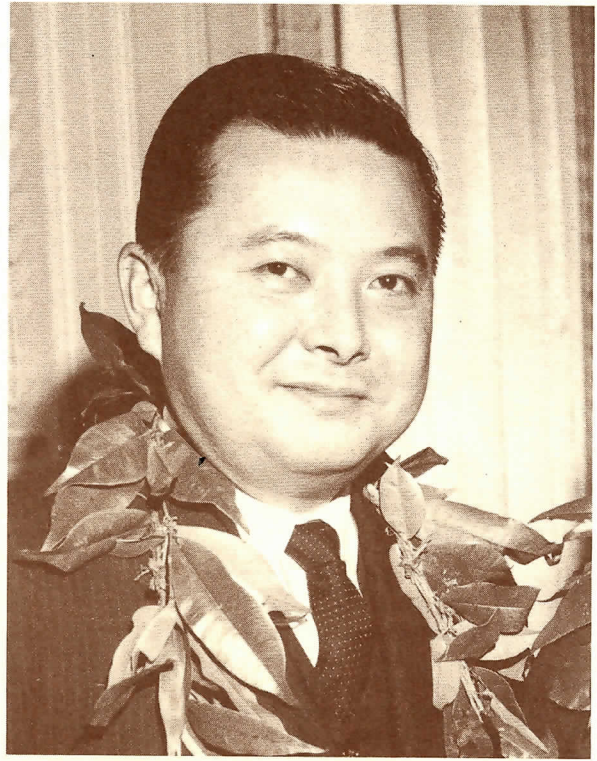
He won a battlefield commission in Italy, and retired as an Army captain in 1947. In the fighting, he lost an arm. He won, among other medals, the Distinguished Service Cross.

As principal speaker for the launching of the Kamehameha, Senator Inouye chose the occasion to relate incidents and accomplishments in the life of tribal Hawaii's greatest chieftain, who reigned from 1782 to 1819.

First and foremost, the senator recounted, Kamehameha succeeded where others had failed in uniting all the islands of Hawaii under his leadership.

"Once the islands were freed from the ravages of war, Kamehameha devoted much of his time to the wise management of the internal affairs of his kingdom."

"It is fitting—and the people of Hawaii are filled with pride that this great instrument of war—and of peace—will carry the name of that renowned warrior out of Hawaii's past," Senator Inouye concluded.



## . . . Proud Day for Hawaii



**S**PARK MATSUNAGA, U. S. Representative, of Hawaii, found the launching of the Polaris submarine Kamehameha at Mare Island Naval Shipyard last January 16 "a wonderfully thrilling event."

Representative Matsunaga, only the third person in his fledgling state to serve in the U.S. Congress, was an honored guest at the Kamehameha ceremonies.

"I had never before seen a combatant ship launched," he confessed, "and, as a matter of fact, until Kamehameha, I had never seen a Polaris submarine."

Matsunaga was elected to Congress for his first term in 1962, and won re-election last fall.

"My only Hawaiian colleague in the House is Mrs. Patsy Mink, and she, as am I, is a Democrat," Matsunaga pointed out.

"But political affiliations have no bearing on our national defense, as it is exemplified by weapons systems embodied in such mighty submarines as the Kamehameha," he noted.

"All Hawaii was proud and pleased that the name of one of our great heroes was chosen for a Polaris submarine."

"We worked to achieve this recognition, and I am sure Kamehameha will be a great ship," he added.

# Launching Ceremonies At Mare Island Naval Shipyard, Vallejo, California



Gifts were presented Mrs. Samuel Wilder King, sponsor of the Kamehameha, at a reception in her honor following the launching of the Polaris Submarine.

TIKI SAYS  
"CAN DO"



Mrs. Samuel Wilder King, center, sponsor of Kamehameha, posed with fellow Hawaiians at post-launching reception at Mare Island.



A part of the crowd of more than 7,000 that attended the Kamehameha launching, as well as members of the official party, can be seen in this photo taken from a vantage point well above the fitting.

TIKI SAYS  
"CAN DO"

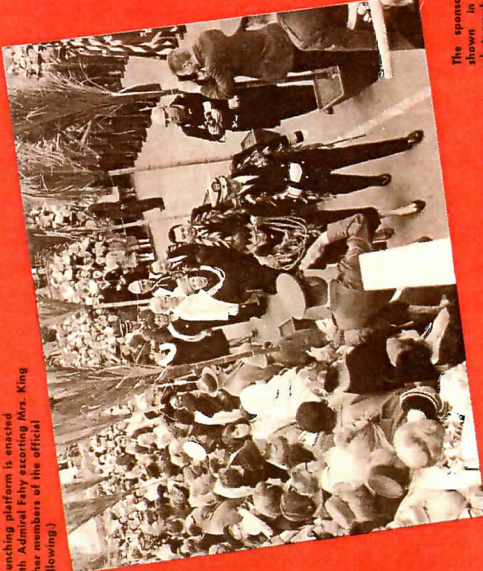


Admiral Fahy, Rear Admiral Fahy, and Rear Admiral Fahy, as they posed after the Kamehameha launching.

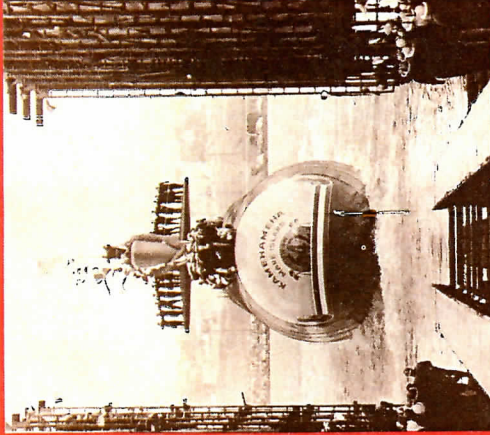


A portrait of King Kamehameha was presented crew members R. W. Dickson and R. S. Leddick by W. A. Bennett, of the Pearl Harbor Association.

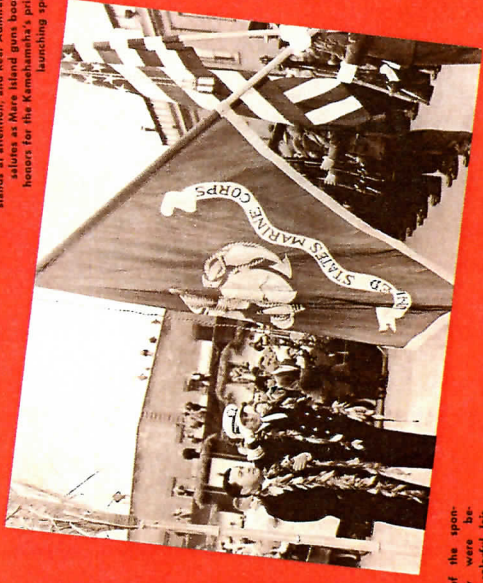
Mare Island's celebrated "Champagne Walk" to the launching platform is snatched here, with Admiral Fahy escorting Mrs. King (with other members of the official party following).



The sponsor's party is shown in an official photograph taken just prior to the time of the "Champagne Walk" to the launching platform.



The Polaris submarine Kamehameha, her crewmen riding topside, is shown as she settled in the waters of Mare Island Channel following her smooth-as-glass launching.



Members of the sponsor's party were decorated in colorful leis, and several wore costumes of early Hawaiian origin.

U.S. Sen. Daniel K. Inouye of Hawaii, stands at attention, and Rear Admiral Fahy salutes as Mare Island goes boom off honors for the Kamehameha's principal launching speaker.



A perfect hit is registered by sponsor Mrs. Samuel Wilder King on the prow of the Kamehameha as she swung the traditional champagne bottle. Looking on are Admiral Fahy and Capt. Norbert Frankenberger.

## 'I Christen Thee . . .'

**K**AMEHAMEHA, (SSBN 642), will join the fleet at Mare Island Naval Shipyard early next fall as the United States' most modern and most powerful Polaris submarine.

The huge submarine, launched in ceremonial fanfare on January 16 of this year at Mare Island, is the Vallejo shipyard's 505th ship in the yard's more than 110-year history.

Additionally, Kamehameha is Mare Island's 11th nuclear powered submarine, and sixth Polaris boat in a current program of seven.

Only the Gen. Mariano G. Vallejo remains on the Mare Island building ways. Her launching is scheduled for late summer.

The Kamehameha stretches to an overall length of 425 feet and displaces more than 7,000 tons. Nuclear power will drive the ship at speeds in excess of 20 knots submerged and at depths of more than 400 feet.

Two crews will alternate in manning the vessel.

In addition to torpedoes, the Kamehameha will carry 16 Polaris missiles which can be fired from under water. This latest submarine can fire the A-3 missile, nuclear-tipped, with a range of 2,800 miles.

When the current Polaris building program is completed the U.S. will have 41 of the powerful submarines deployed in the Atlantic and the Pacific.

The mighty Polaris submarine Kamehameha, named for a mighty Hawaiian monarch, slides gracefully into the waters of Mare Island Channel at her launching last January 16. The powerful vessel is destined to see duty with the Pacific Submarine Force after she has been commissioned early next fall. The Kamehameha is the first U.S. Polaris submarine to bear the name of a famous Hawaiian personage.





**Mrs. Samuel Wilder King,** widow of Hawaii's last territorial governor, christened the Polaris submarine Kamehameha at the ship's launching January 16 at Mare Island Naval Shipyard. Mrs. King, with her husband, was active in Hawaii's successful struggle to attain statehood.



**CMDR. ROTH S. LEDDICK, USN,** is skipper of the "Blue Crew" of the Kamehameha. He has had wide experience in nuclear submarines.



**CMDR. ROBERT W. DICKIESON, USN,** is slated to serve as skipper of the Kamehameha's "Gold Crew." He recently commanded the Swordfish.

*Mare Island  
Naval Shipyard  
Vallejo, California*



**EDWARD J. FAHY,**  
Rear Admiral,  
U.S. Navy



# *Presidential Citation*

IS AWARDED TO

## *Mare Island Naval Shipyard*

*In special recognition of an outstanding contribution  
to greater economy and improvement in Government  
operations during the tenth anniversary year of the  
Federal incentive awards program.*

*Paul H. Nitze*  
President of the  
30 November 1964

*Franklin D. Roosevelt*



PUBLISHED BY THE ARMED SERVICES COMMITTEE  
VALLEJO CHAMBER OF COMMERCE