

CONFIDENTIAL

SUBMARINE SS565

MAIN DECK

SCALE: 1/8" = 1 FOOT PLATE NO. 5

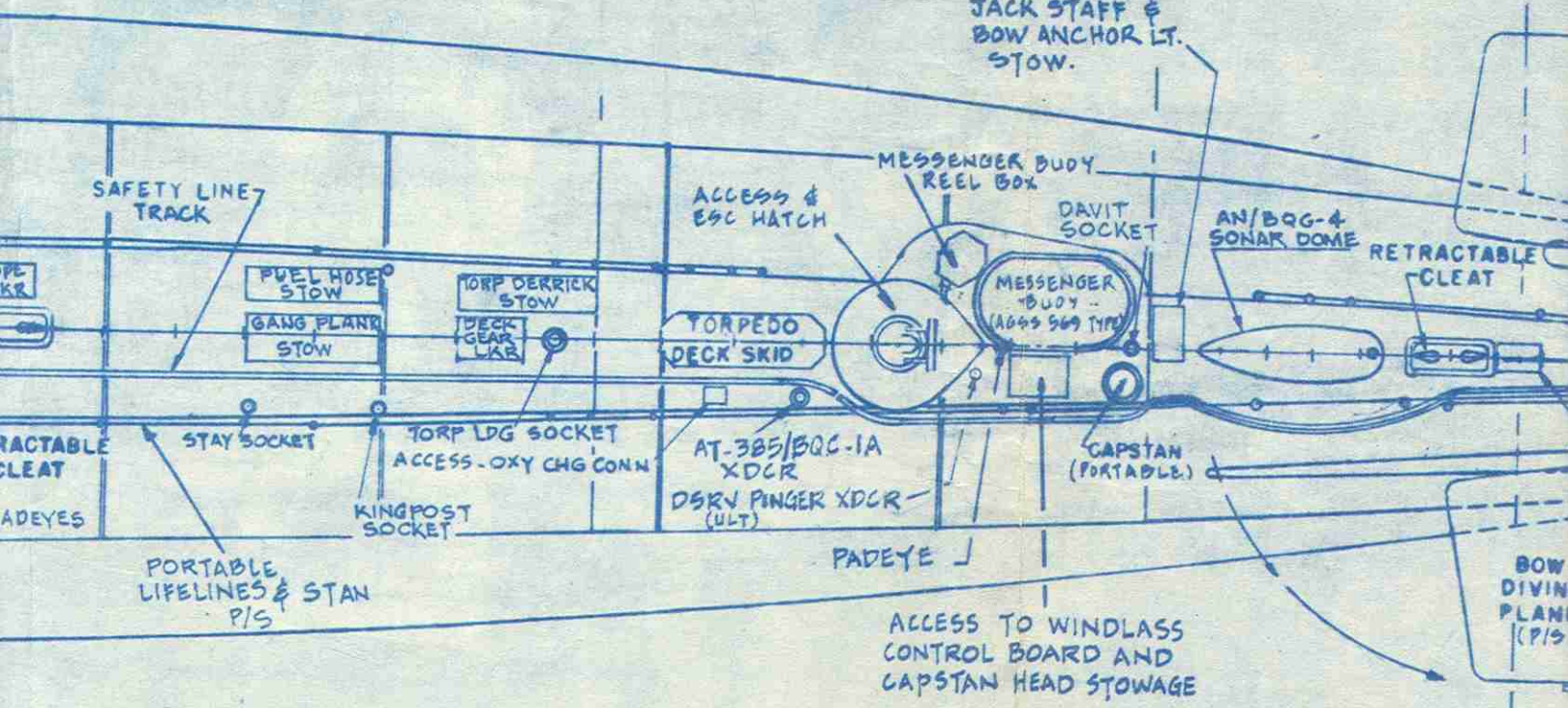
NAVSHIPS DWG SS565-845-2514668

SIDES (PLASTIC)  
P/S

FIXED MAIN DECK & TANGENT PL STL  
FIXED SIDES (PLASTIC) P/S

SKER  
ITTER PIPING  
P/S

JACK STAFF &  
BOW ANCHOR LT.  
STOW.



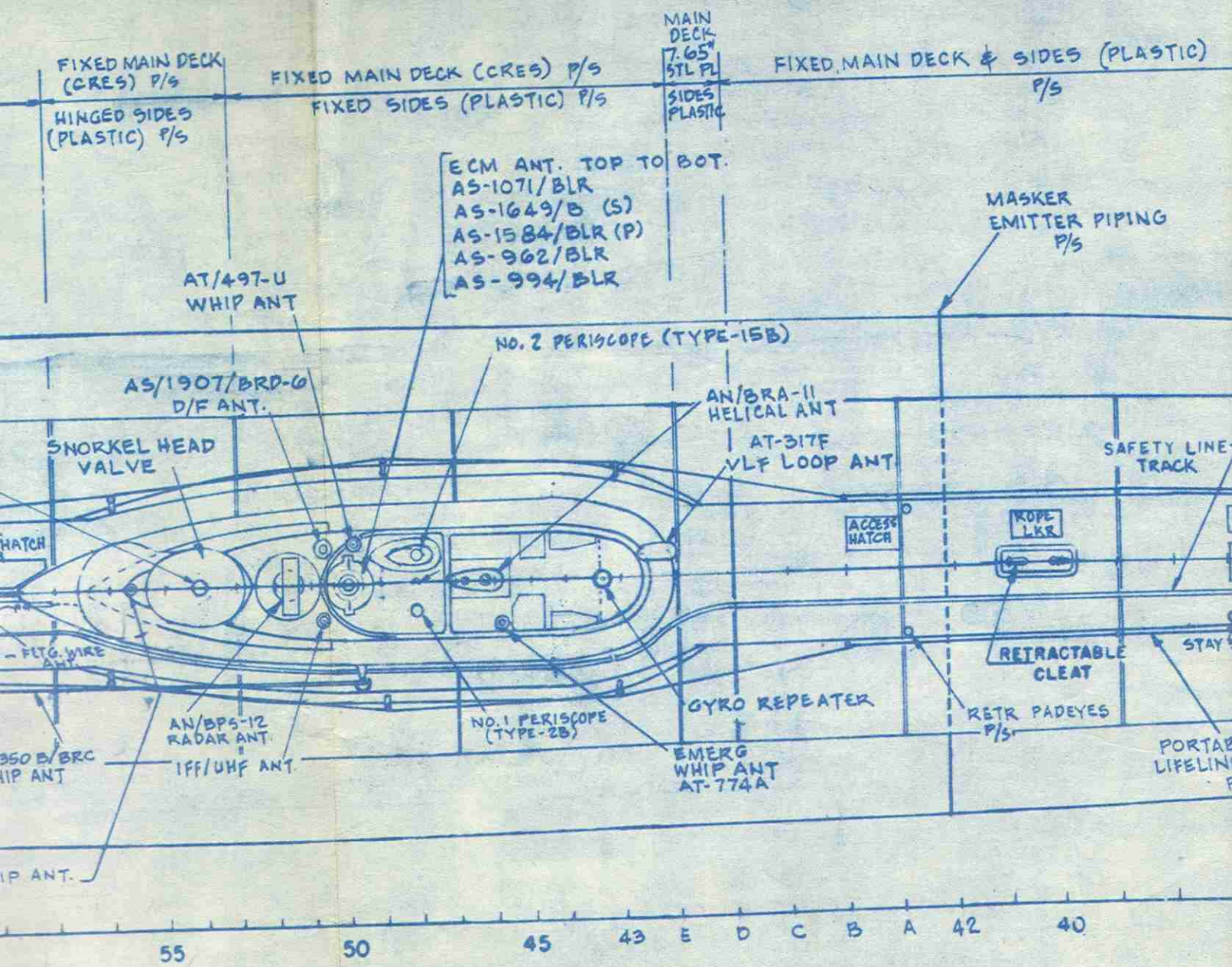
40

35

30

25

20



MAIN DECK & SIDES (PLASTIC)

P/S

FIXED MAIN DECK  
(GRES) P/S

FIXED MA

HINGED SIDES  
(PLASTIC) P/S

FIXED

MASKER  
EMITTER PIPING  
P/S

AT/497-U  
WHIP ANT

AS/1907/BRD-0  
D/F ANT.

STAN P/S

CREW'S MESS  
ACCESS HATCH

SUB IDENT  
LIGHT

SNORKEL HEAD  
VALVE

ROPE  
LKR

ROPE  
LKR

HP AIR  
ACCESS HATCH

AS-1554 - FTG. WIRE  
ANT.

RETRACTABLE  
CLEAT

AN/BQG-4  
SONAR DOME

AT-350 B/BRC  
WHIP ANT

AN/BPS-12  
RADAR ANT.

IFF/UHF ANT.

SNORKEL WHIP ANT.  
AS-1287

A 69

65

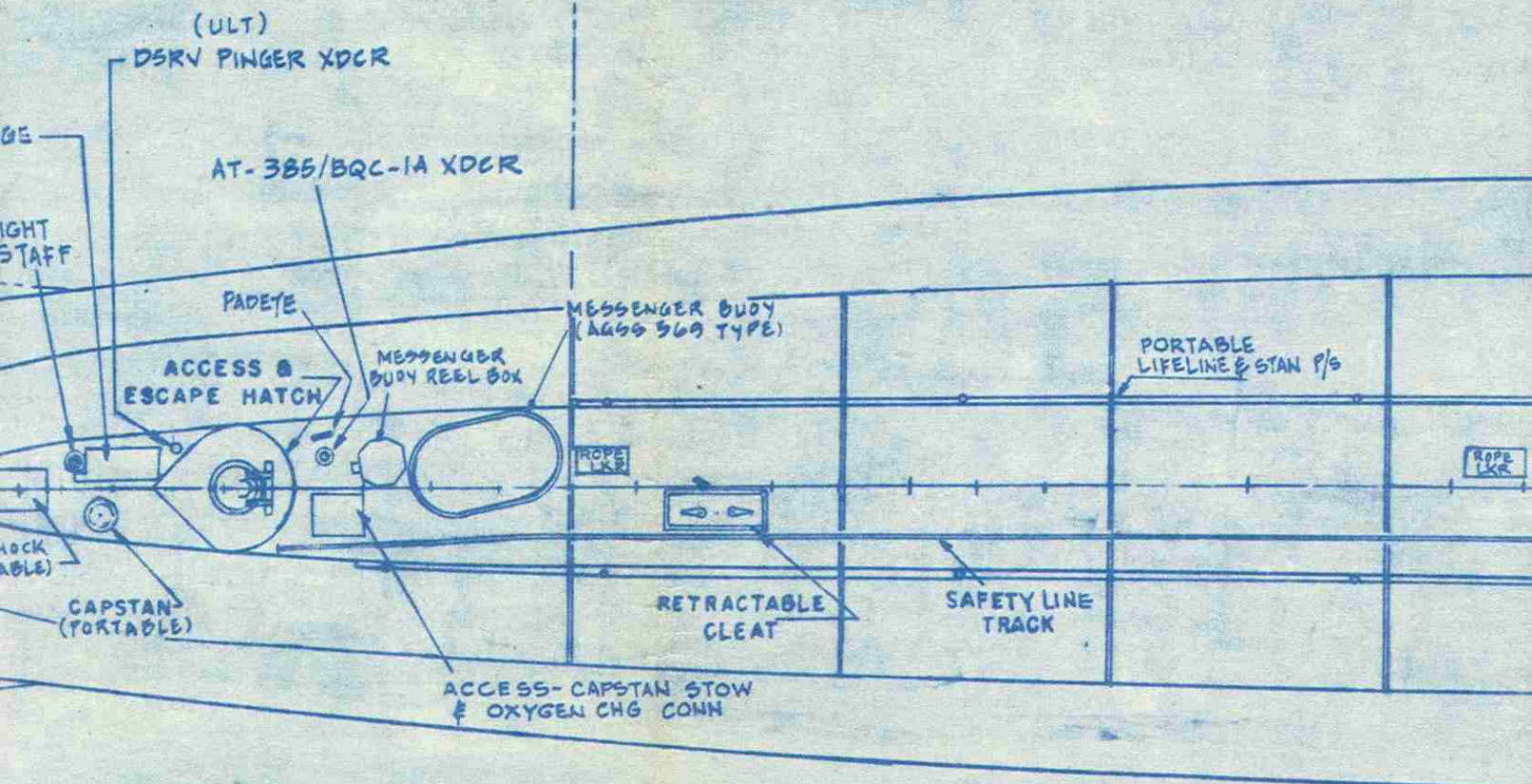
60

55

50

HINGED SEC - MAIN DECK & SIDES

P/S



85

80

75

70

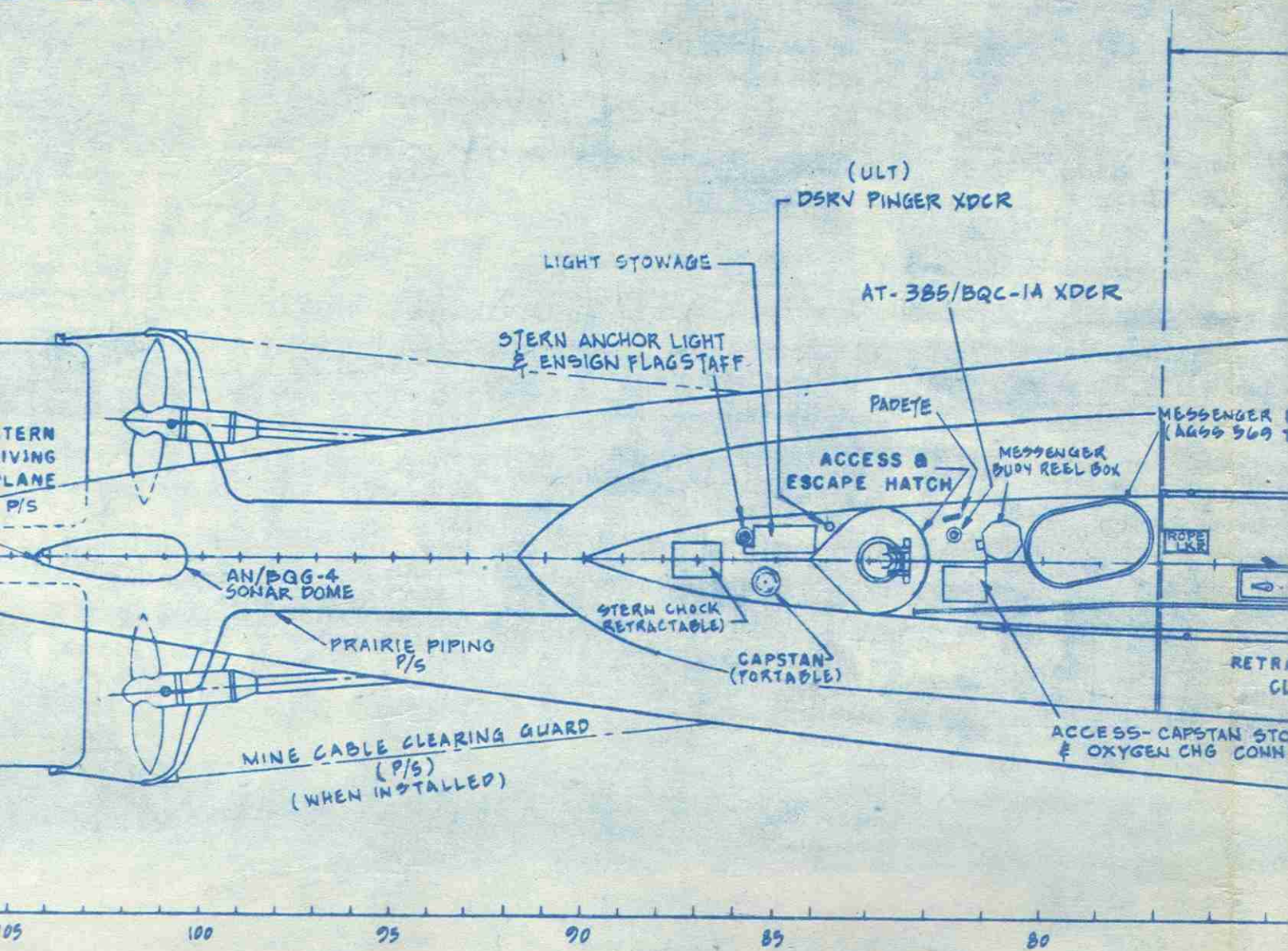
C

B

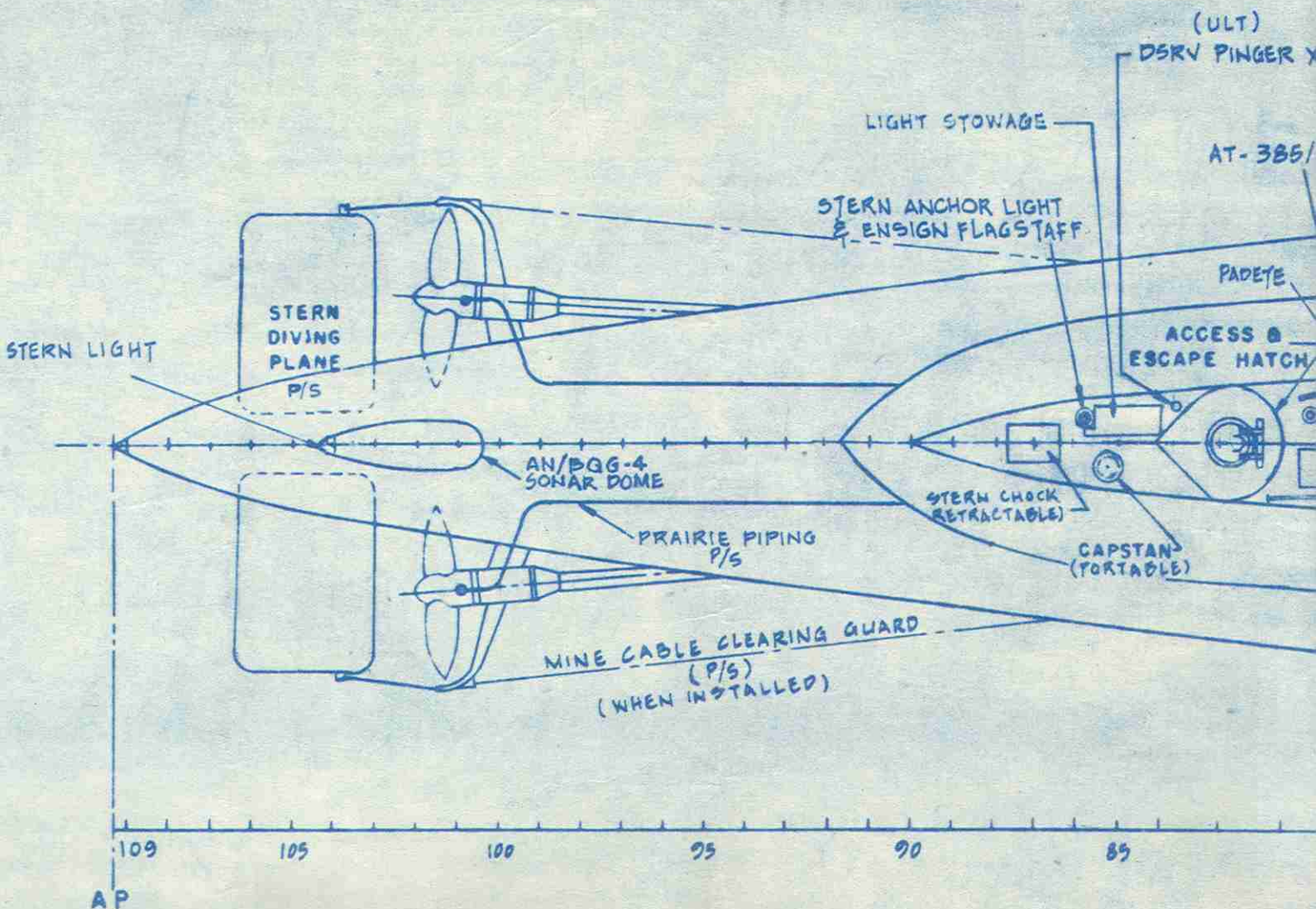
A

69

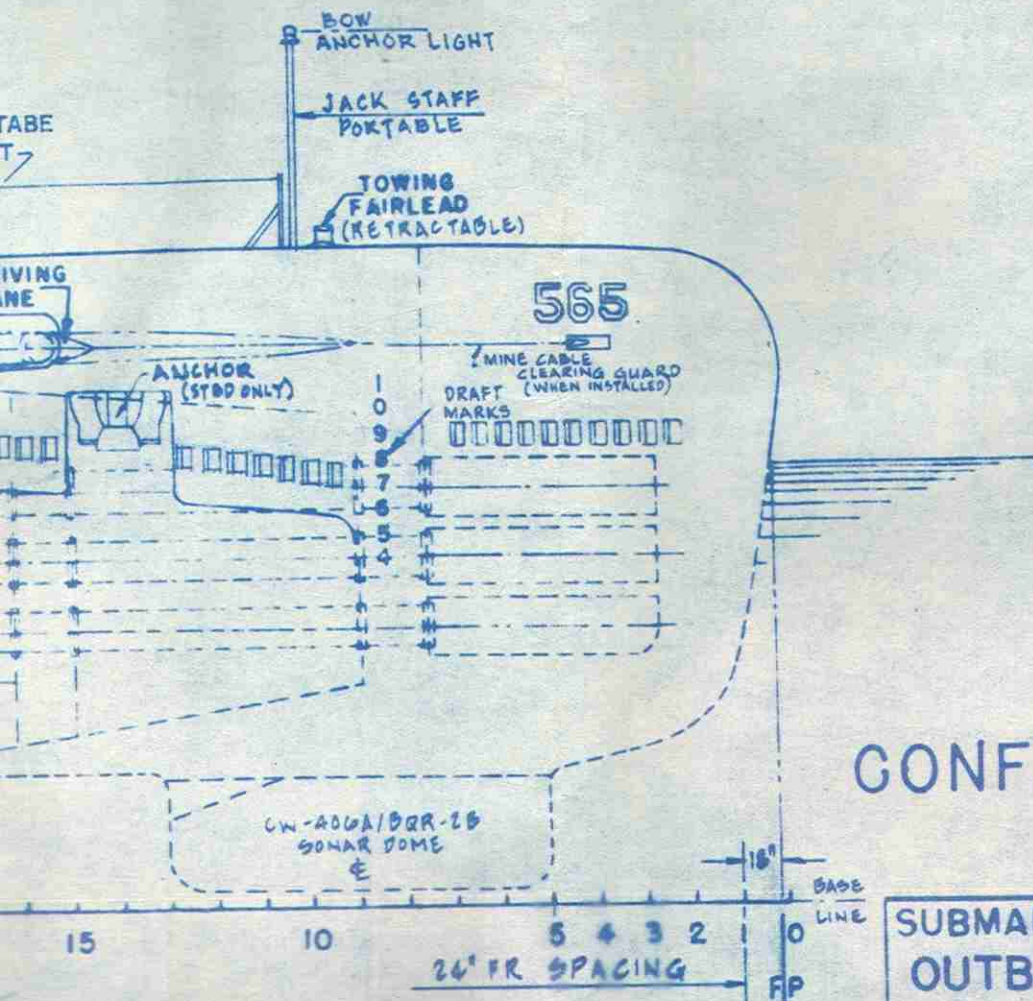
DENTIAL



# CONFIDENTIAL



R LIGHTS  
TS OF  
ATIONAL-  
5.  
ORIZED  
, PART 706.

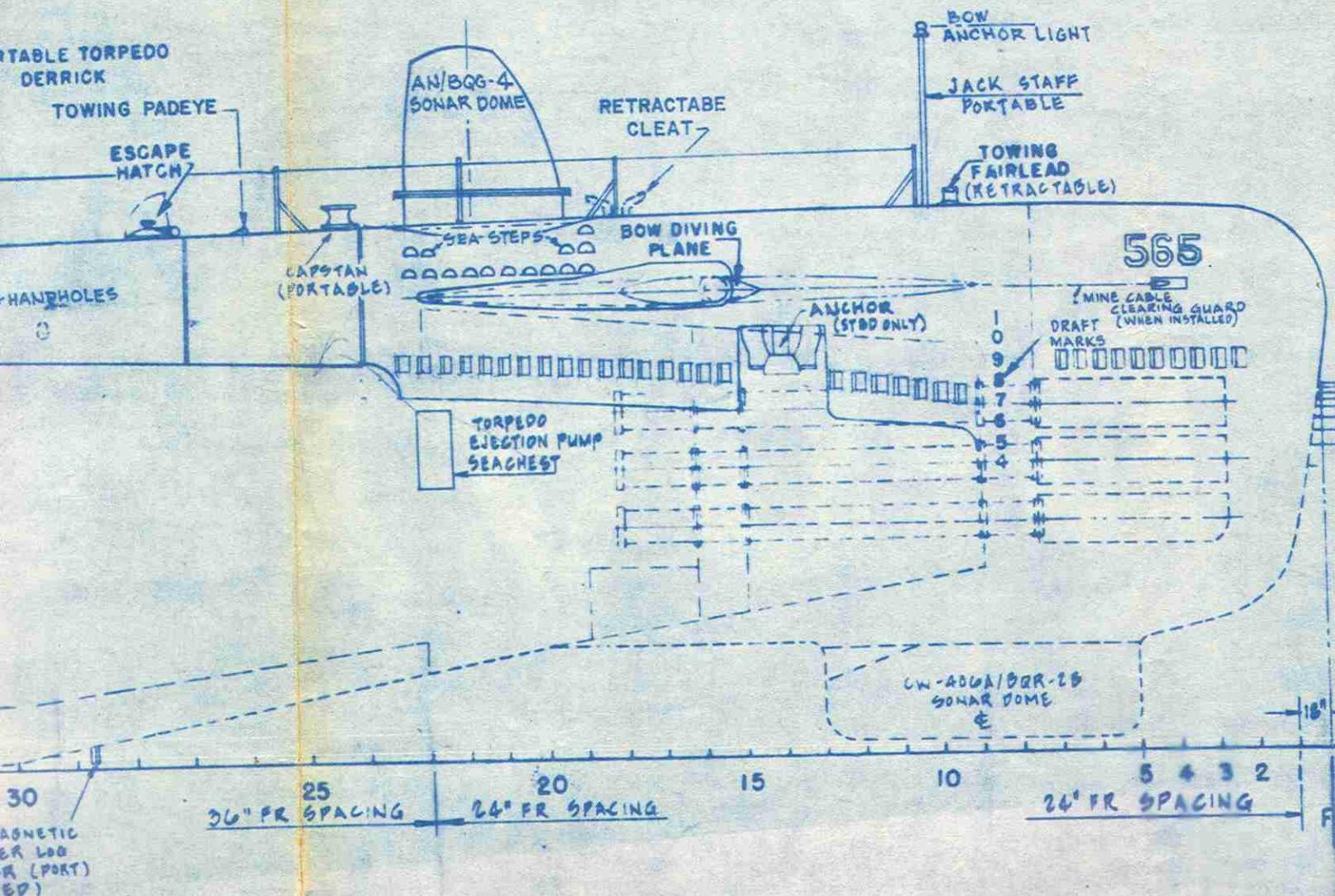


CONFIDENTIAL

SUBMARINE	SS565
OUTBOARD PROFILE	
SCALE: 1/8" = 1 FOOT	PLATE NO. 3
NAVSHIPS DWG SS565-845-2514663	

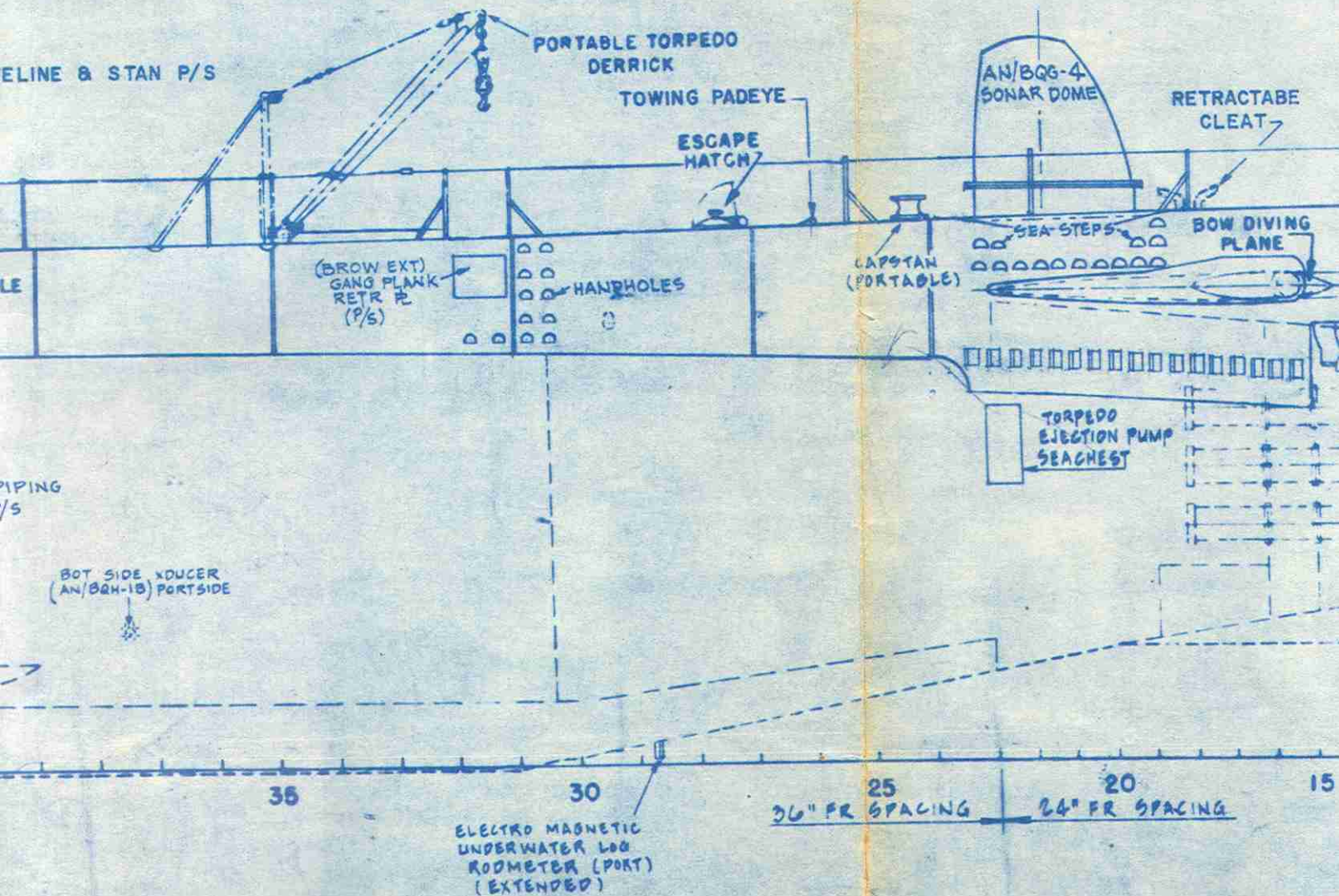


NOTE! NONE OF THE RUNNING AND ANCHOR LIGHTS  
 MEETS THE LOCATION REQUIREMENTS OF  
 THE RULES OF THE ROAD INTERNATIONAL-  
 INLAND CG-169 OF 1 SEPT. 1965.  
 THESE DISCREPANCIES ARE AUTHORIZED  
 BY NAVIGATIONAL LIGHT WAIVERS, PART 706.



WHIP ANT (P)  
 COPE (S) TYPE 2B  
 COPE (P) TYPE 15B  
 NT, TOP TO BOT.  
 /BLR  
 9/B (S)  
 4/BLR (P)  
 2/BLR  
 4/BLR

**NOTE!** NONE OF THE RUNNING AND ANCHOR LIGHT  
 MEETS THE LOCATION REQUIREMENTS OF  
 THE RULES OF THE ROAD INTERNATIONAL  
 INLAND C G-169 OF 1 SEPT. 1965.  
 THESE DISCREPANCIES ARE AUTHORIZED  
 BY NAVIGATIONAL LIGHT WAIVERS, PAR



- AT-497/U - WHIP ANT (P)
- NO.1 PERISCOPE (S) TYPE 2B
- NO.2 PERISCOPE (P) TYPE 15B
- ECM ANT. TOP TO BOT.  
AS-1071/BLR  
AS-1649/B (S)  
AS-1584/BLR (P)  
AS-962/BLR  
AS-994/BLR

NOTE! NONE OF THE RULES MEETS THE LOCAL RULES OF THE INLAND C G-169 THESE DISCREPANCIES BY NAVIGATION

ASTHEAD LT. (E)

DE LT (P/S)

MASKER  
EMITTER PIPING  
(P/S)  
ACCESS TO  
FAIRWATER  
(S)

PORTABLE LIFELINE & STAN P/S

PORTABLE TORPEDO  
DERRICK

TOWING PADEYE

ESCAPE  
MATCH

RETRACTABLE  
CLEAT

(BROW EXT)  
GANG PLANK  
RETR P/S

HANDHOLES

CAPSTAN  
(PORTAB)

MASKER  
EMITTER PIPING  
(GIRTH) P/S

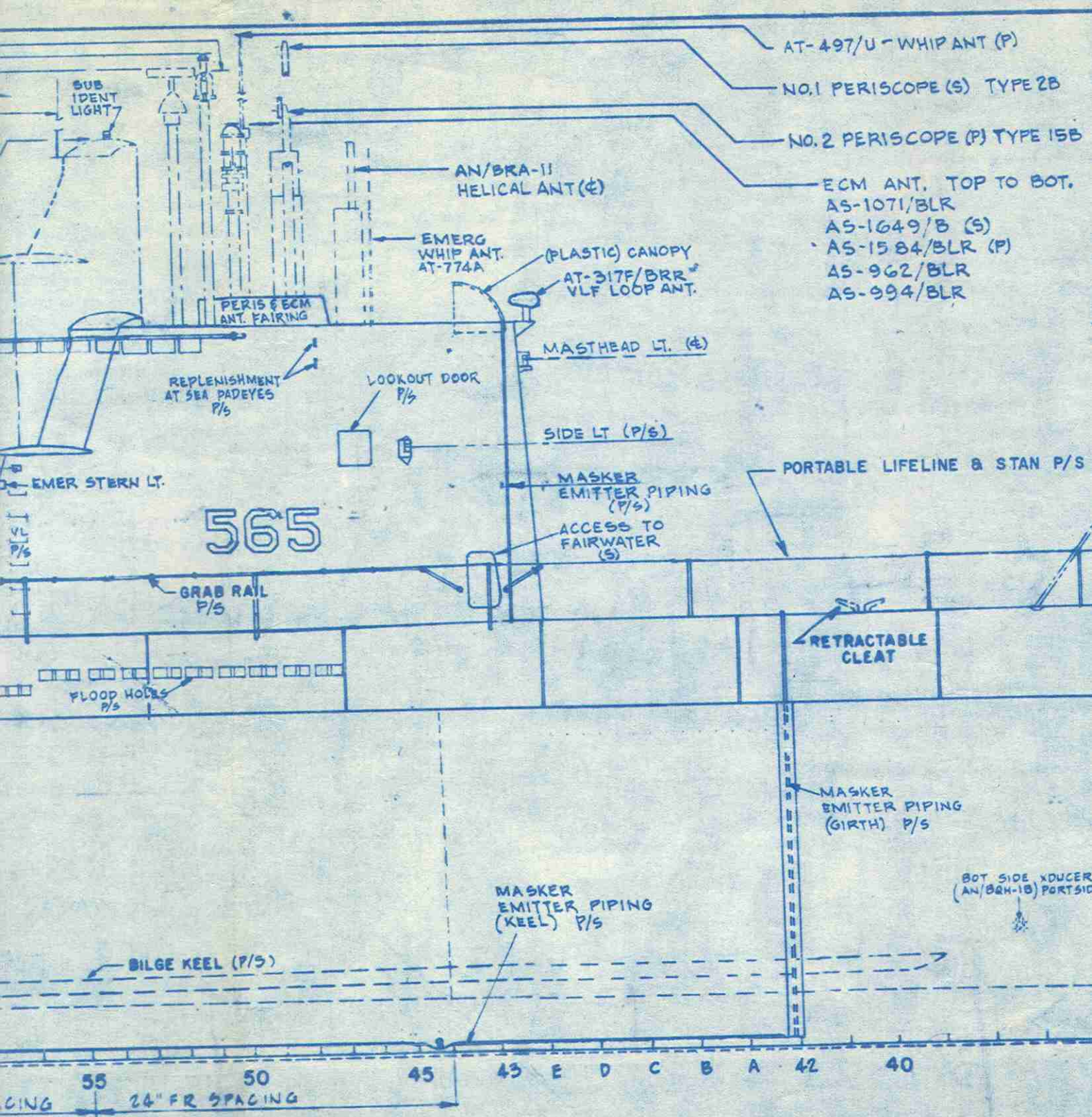
BOT SIDE XDUCCER  
(AN/BQH-1B) PORTSIDE

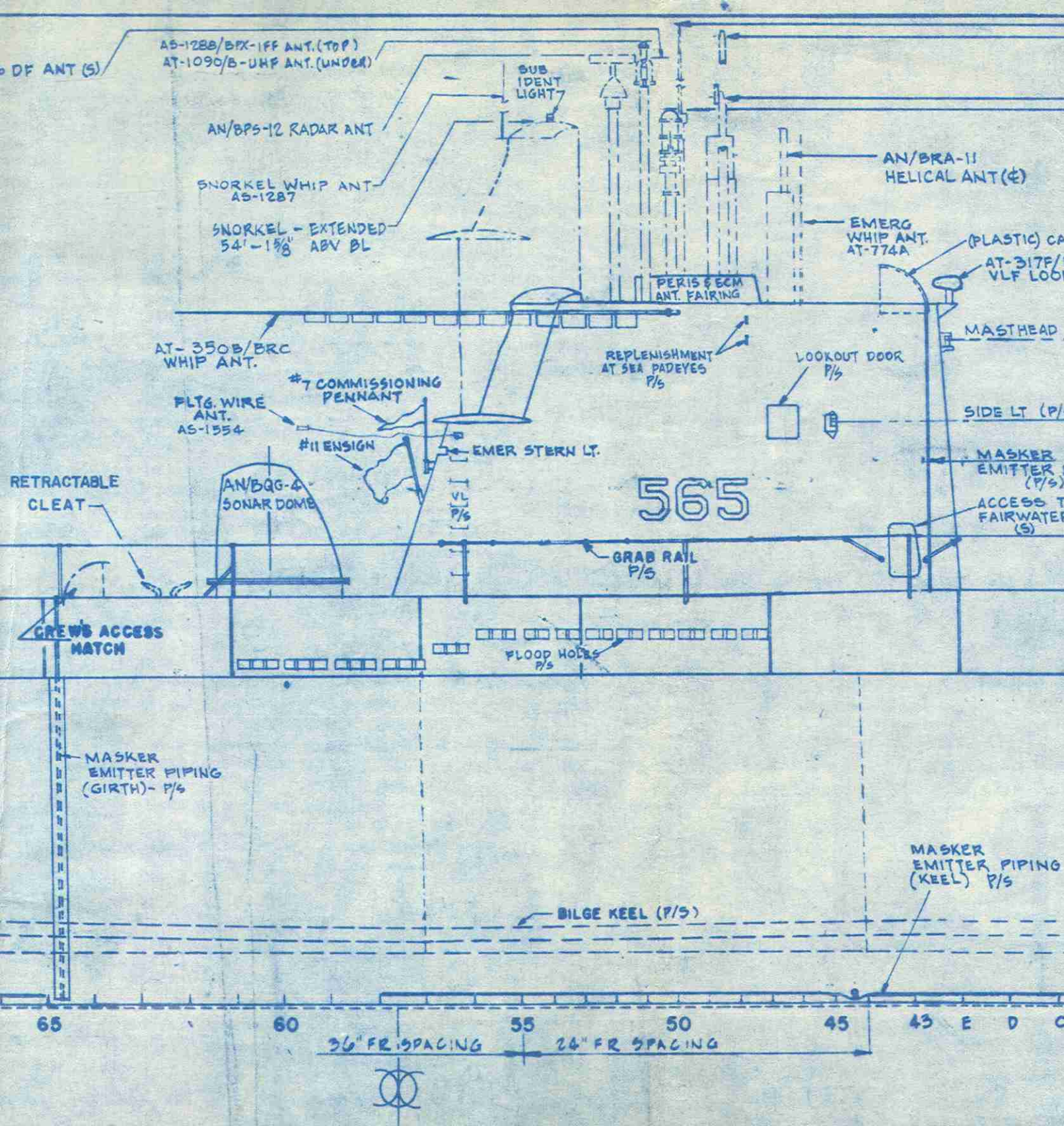
R PIPING  
P/S



ELECTRO MAGNETIC  
UNDERWATER LOG  
ROCKET (PART)

36" FR SPAC





AS-1907/BRD-6 DF ANT (S)

AS-1288/BPX-1FF ANT.(TOP)  
AT-1090/B-UHF ANT.(UNDER)

AN/BPS-12 RADAR ANT

SNORKEL WHIP ANT  
AS-1287

SNORKEL - EXTENDED  
54'-1 7/8" ABV BL

SUB  
IDENT  
LIGHT

PERIS & ECM  
ANT. FAIRING

AT-350B/BRC  
WHIP ANT.

REPLENISHMENT  
AT SEA PADEYES  
P/S

PLTG. WIRE  
ANT.  
AS-1554

#7 COMMISSIONING  
PENNANT

#11 ENSIGN

EMER STERN LT.

RETRACTABLE  
CLEAT

AN/BQG-4  
SONAR DOME

565

GRAB RAIL  
P/S

CREW'S ACCESS  
MATCH

FLOOD HOLES  
P/S

MASKER  
EMITTER PIPING  
(GIRTH)- P/S

BILGE KEEL (P/S)

B A 69

65

60

55

50

36" FR. SPACING

24" FR. SPACING



AS-1907/BRD-6 DF ANT (S)

AS-1288/BPX-1FF ANT. (TOP)  
AT-1090/B-UHF ANT. (UNDER)

AN/BPS-12 RADAR ANT

SNORKEL WHIP ANT  
AS-1287

SNORKEL - EXTENDED  
54'-1 1/8" ABV BL

SUB  
IDENT  
LIGHT

AT-350B/BRC  
WHIP ANT.

#7 COMMISSIONING  
PENNANT

PLTG. WIRE  
ANT.  
AS-1554

#11 ENSIGN

REPLEN  
AT SEA PA  
P/S

EMER STERN LT.

NE & STAN P/S

RETRACTABLE  
CLEAT

AN/BQG-4  
SONAR DOME

5  
GRAB  
P/S

CREW'S ACCESS  
MATCH

FLOOD HOLES  
P/S

MASKER  
EMITTER PIPING  
(GIRTH)- P/S

MASKER  
EMITTER PIPING  
(EL) P/S

BILGE KEEL (P)

70 C B A 60

65

60

55

36" FR SPACING

24" FR SPA



AS-1907/BRD-6 DF ANT (5)

AS-1288/BFX-1FF A  
AT-1090/B-UHF A

AN/BPS-12

SNORKEL W  
AS-1287

SNORKEL  
54'-1 5/8"

AT-350B/BRC  
WHIP ANT.

PLTG. WIRE  
ANT.  
AS-1354

AN/BQG-4  
SONAR DO

AD EYE

PORTABLE LIFELINE & STAN P/S

RETRACTABLE  
CLEAT

RETRACTABLE  
CLEAT

NO. 3 ENG P  
TAIL PIPE

NO. 1 ENG P  
NO. 2 ENG S  
TAIL PIPE

CREW'S ACCESS  
MATCH

MASKER  
EMITTER PIPING  
(GIRTH)- P/S

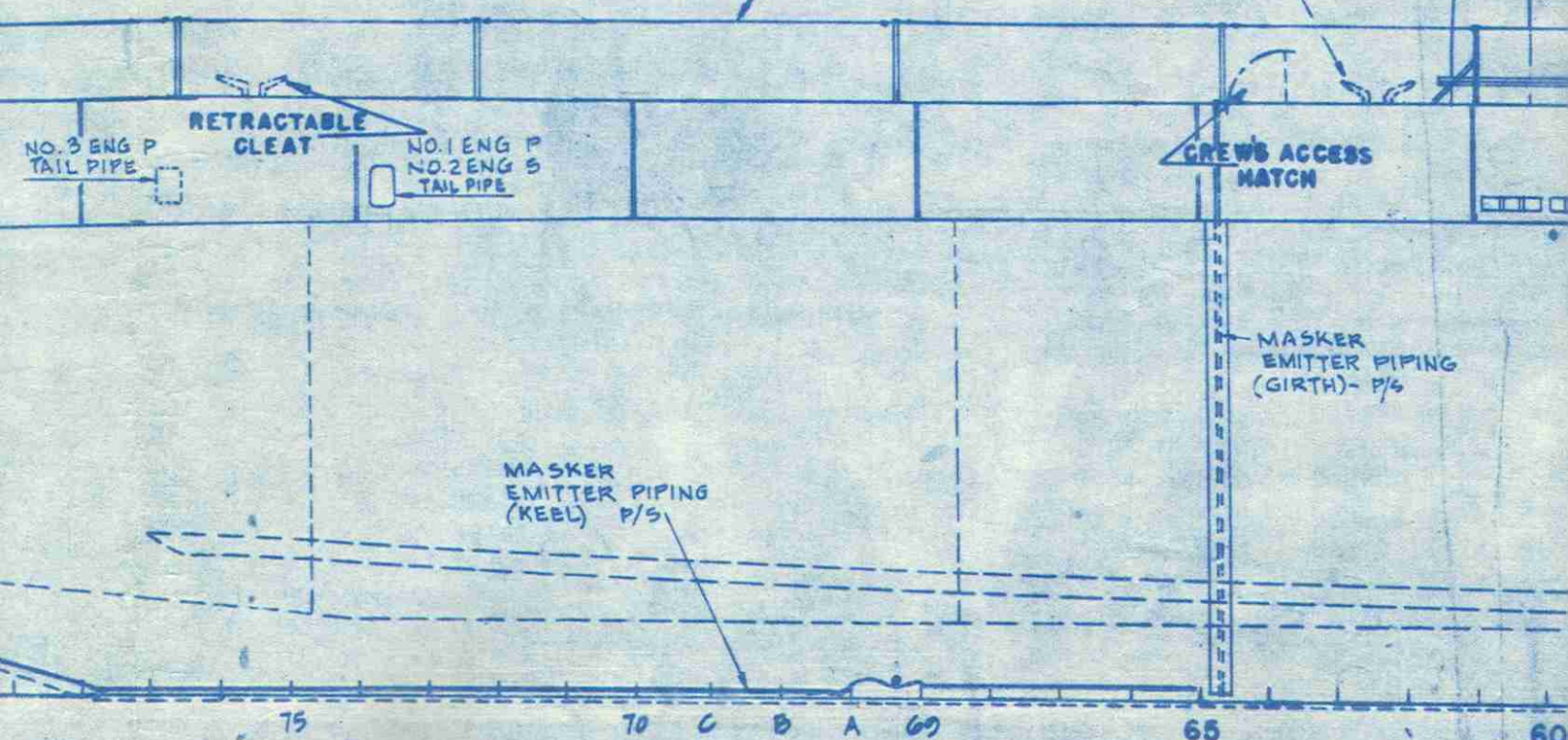
MASKER  
EMITTER PIPING  
(KEEL) P/S

75

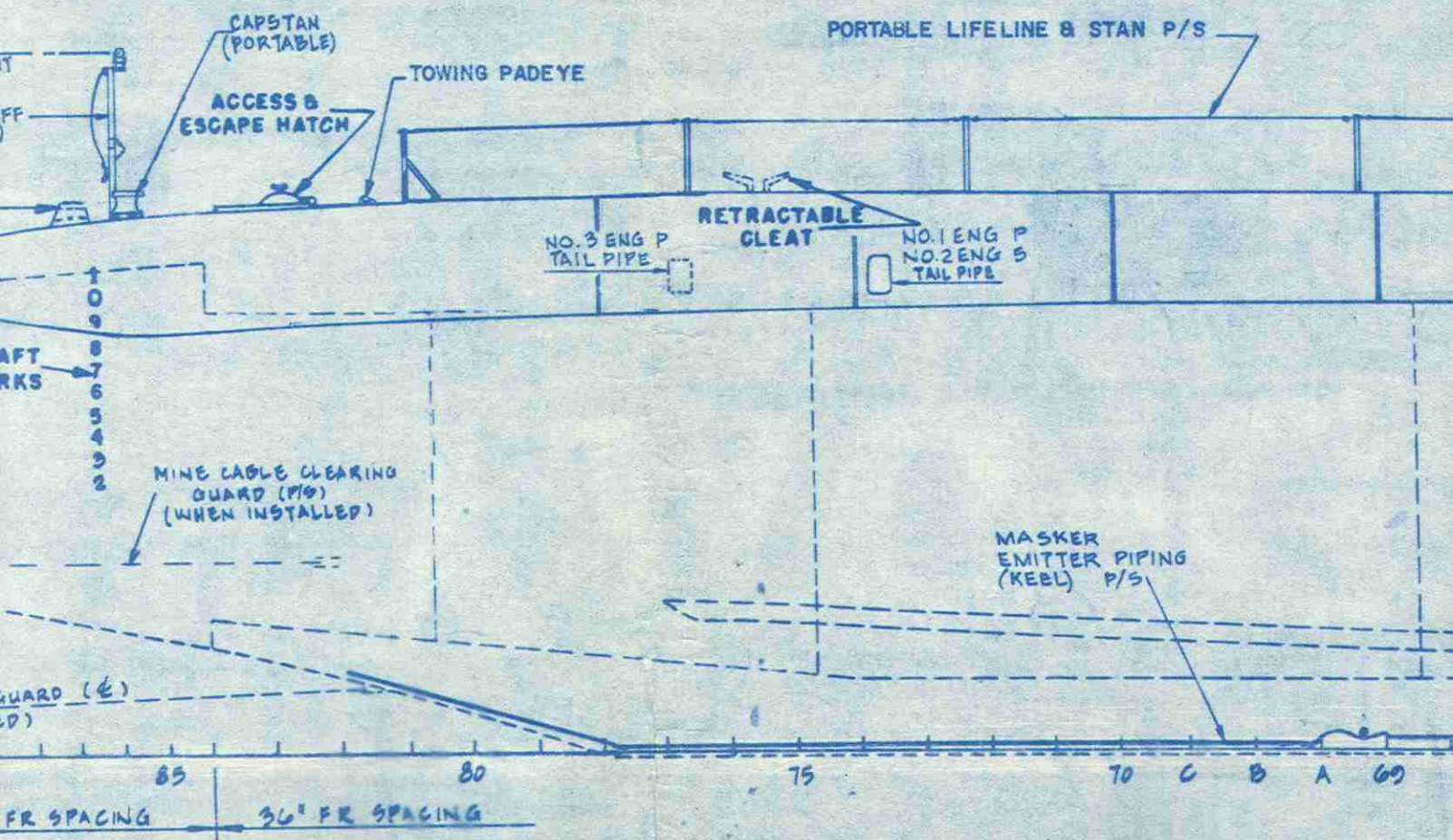
70 C B A 69

65

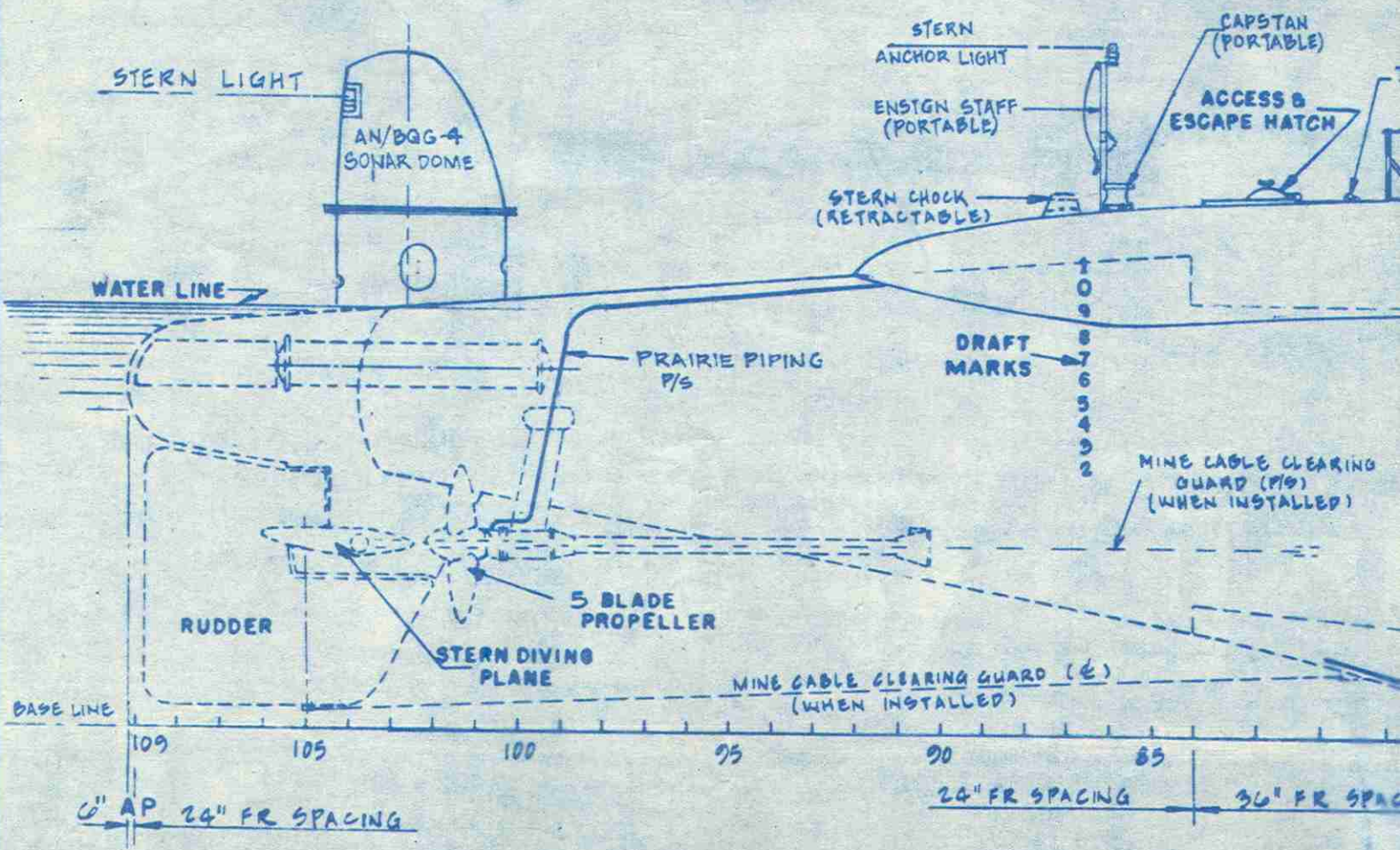
60



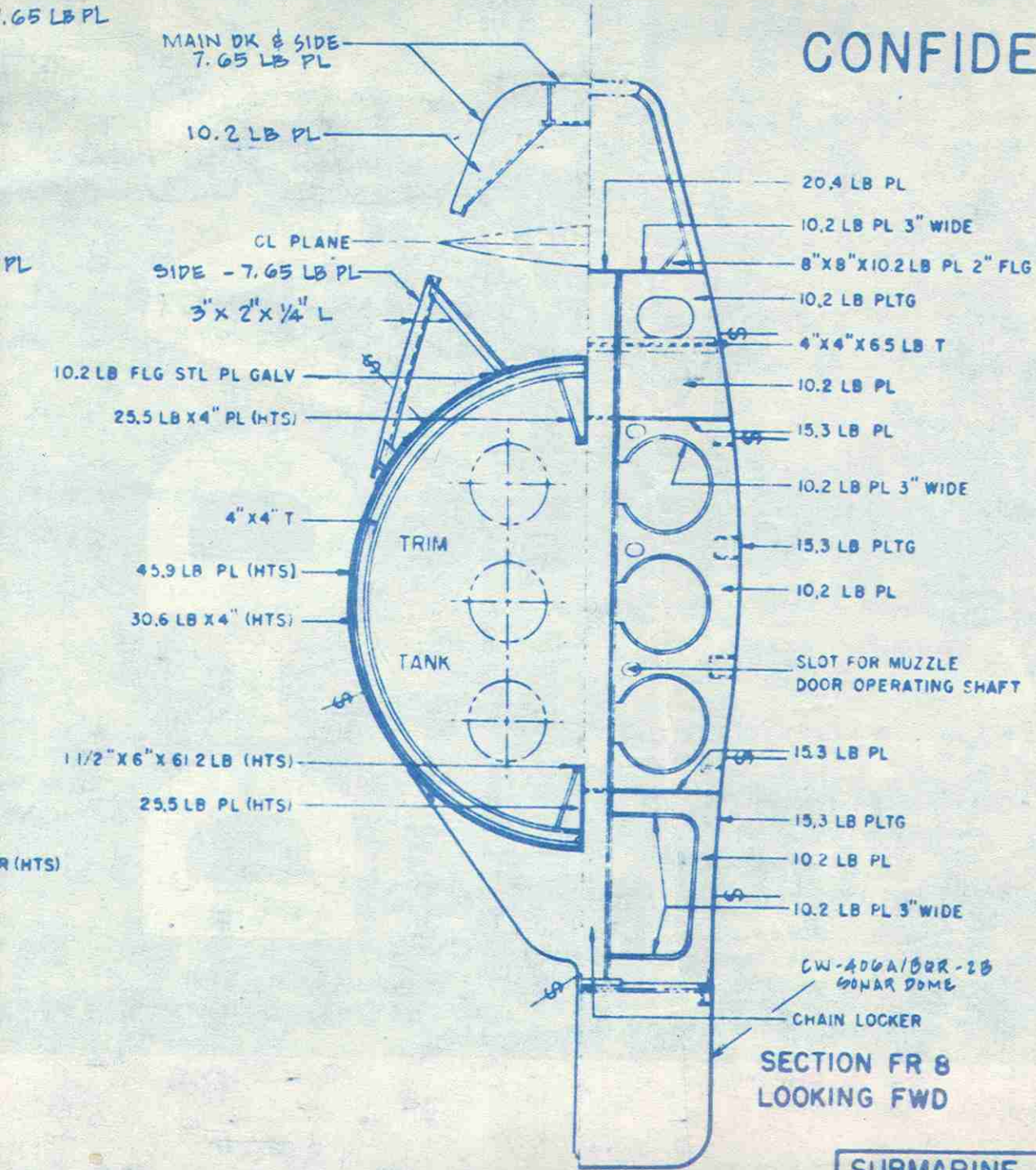




CONFIDENTIAL



CONFIDENTIAL



SECTION FR 13  
LOOKING FWD

SECTION FR 8  
LOOKING FWD

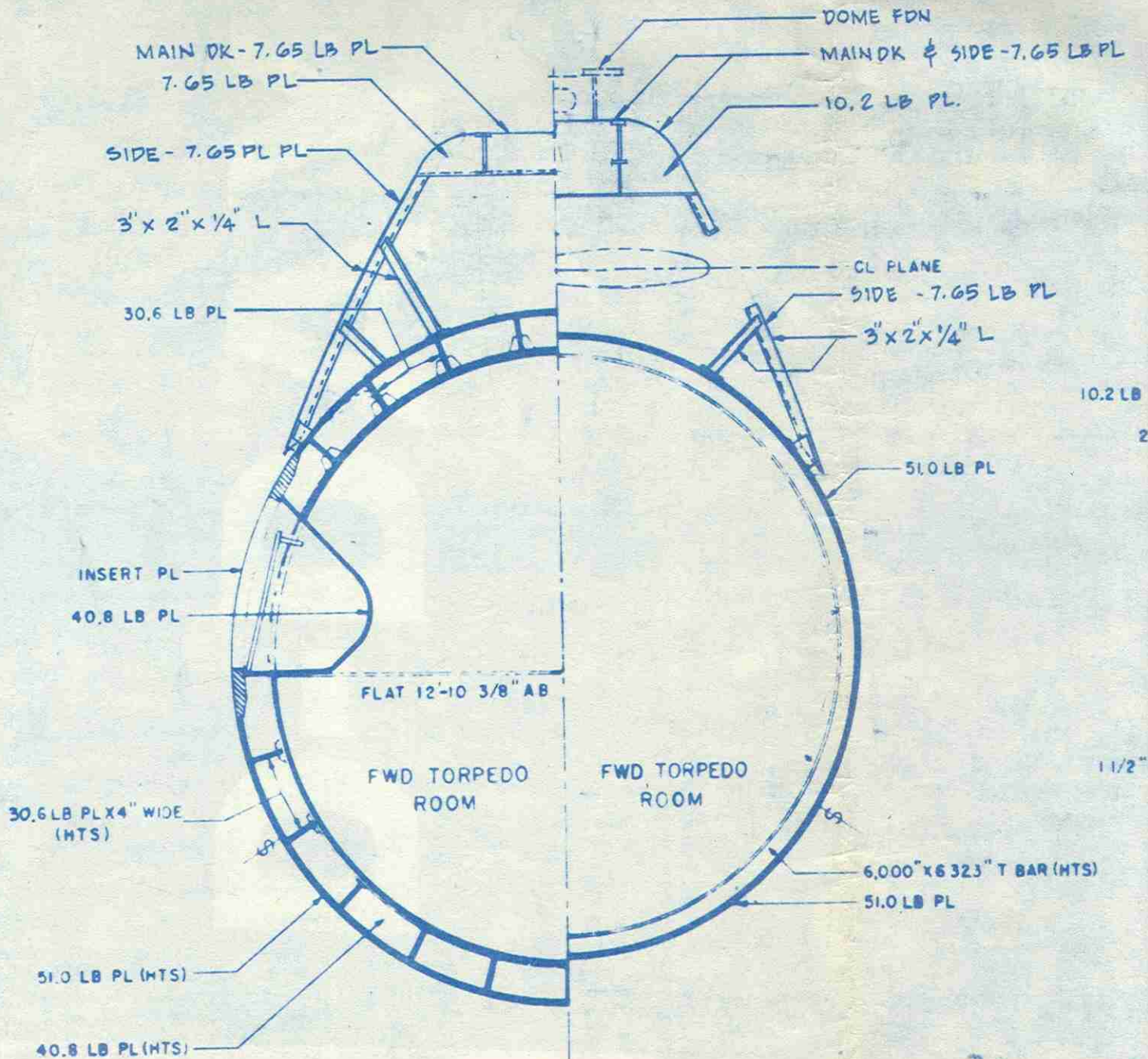
SUBMARINE SS565

TYPICAL SECTIONS

SCALE 1/4" = 1 FOOT

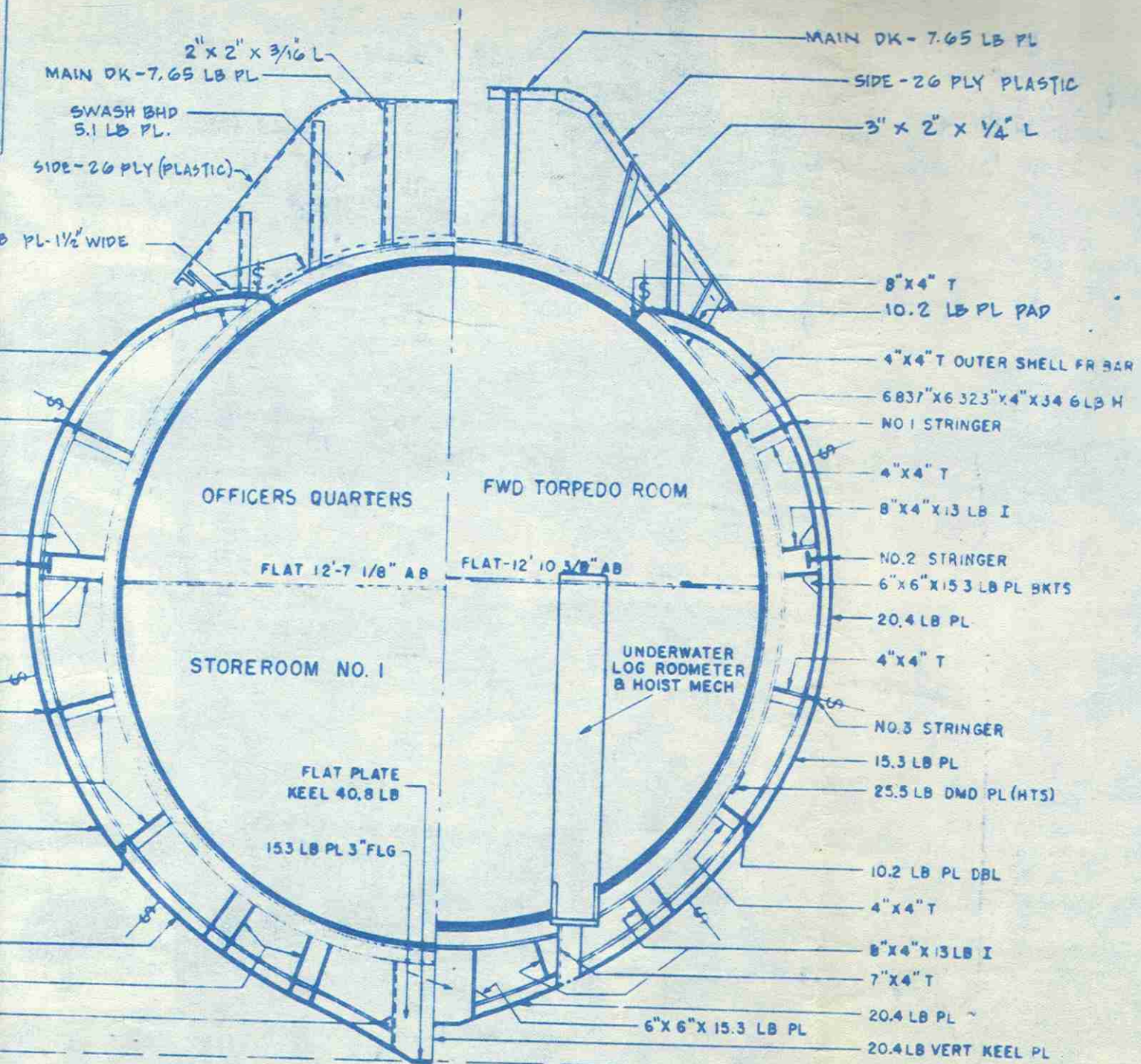
PLATE NO 8

NAVSHIPS DWG SS565-845-2514668



SECTION BHD 23  
LOOKING AFT

SECTION FR 20  
LOOKING FWD



SECTION FR 32  
LOOKING FWD

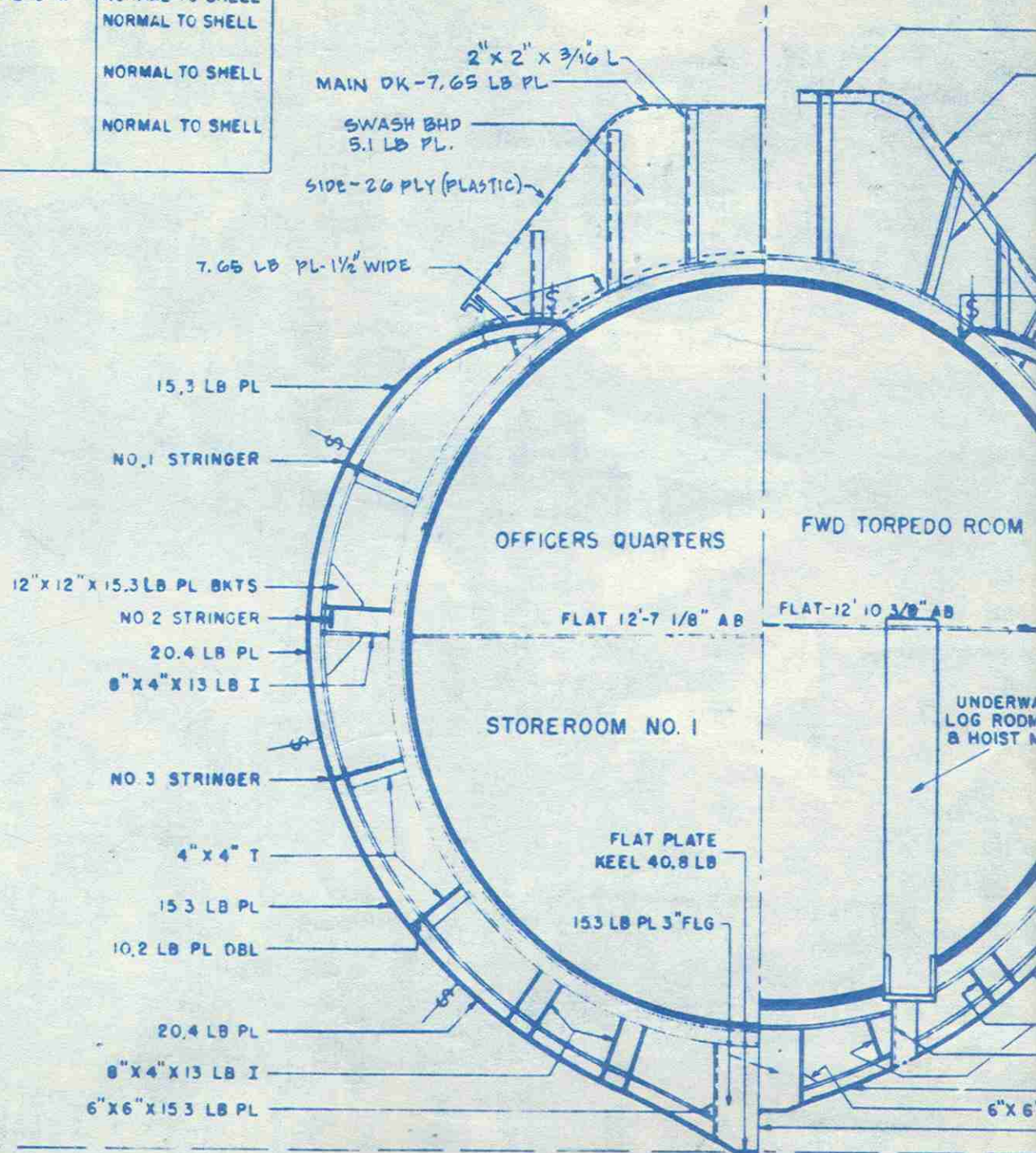
SECTION FR 29  
LOOKING AFT

TABLE OF SCANTLINGS

EXTENT	DIMENSIONS	REMARKS
FRAME 39 TO 77	17.85 LB PL 15" W	NORMAL TO SHELL
FRAME 28 TO 45	4" X 4" T	NORMAL TO SHELL
FRAME 55 TO 72	8" X 4" T	NORMAL TO SHELL
FRAME 28 TO 45	8" X 4" T	NORMAL TO SHELL
FRAME 55 TO 72	4" X 4" T	NORMAL TO SHELL
FRAME 28 TO 45	4" X 4" T	NORMAL TO SHELL
FRAME 55 TO 72	4" X 4" T	NORMAL TO SHELL

LB PL 2" FLG

PL

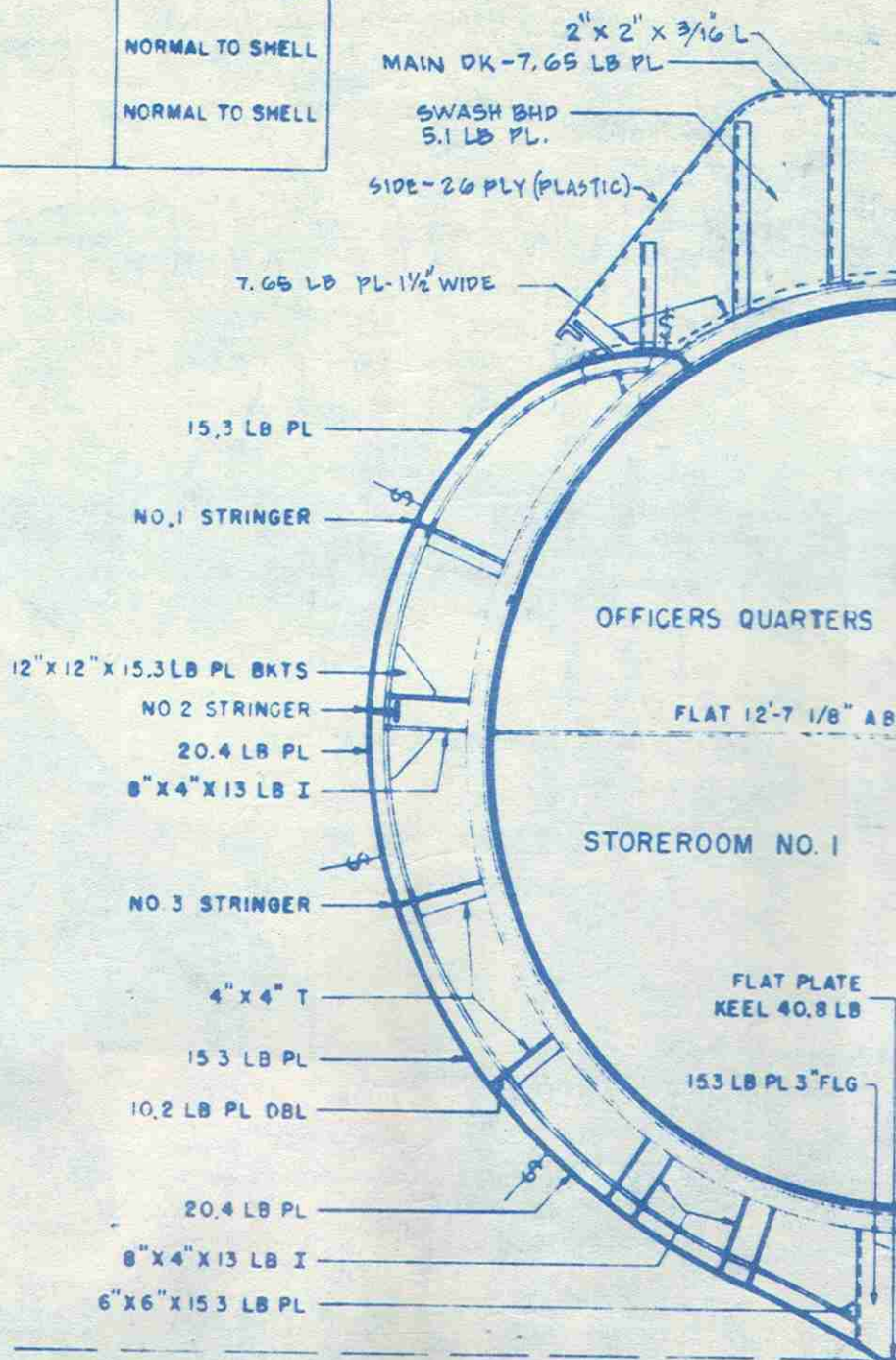
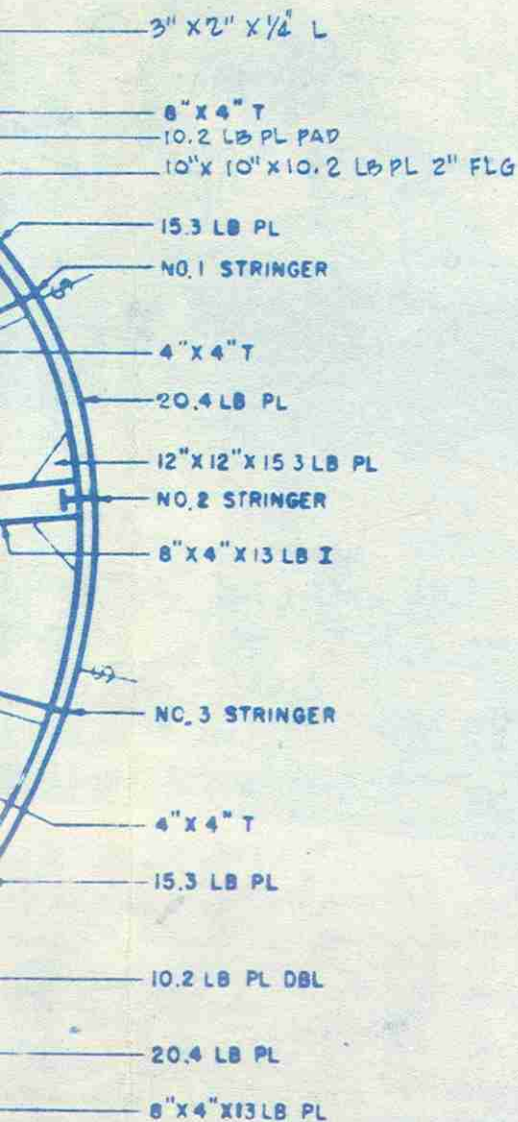


SECTION FR 32  
LOOKING FWD

SECTION FR 29  
LOOKING AFT

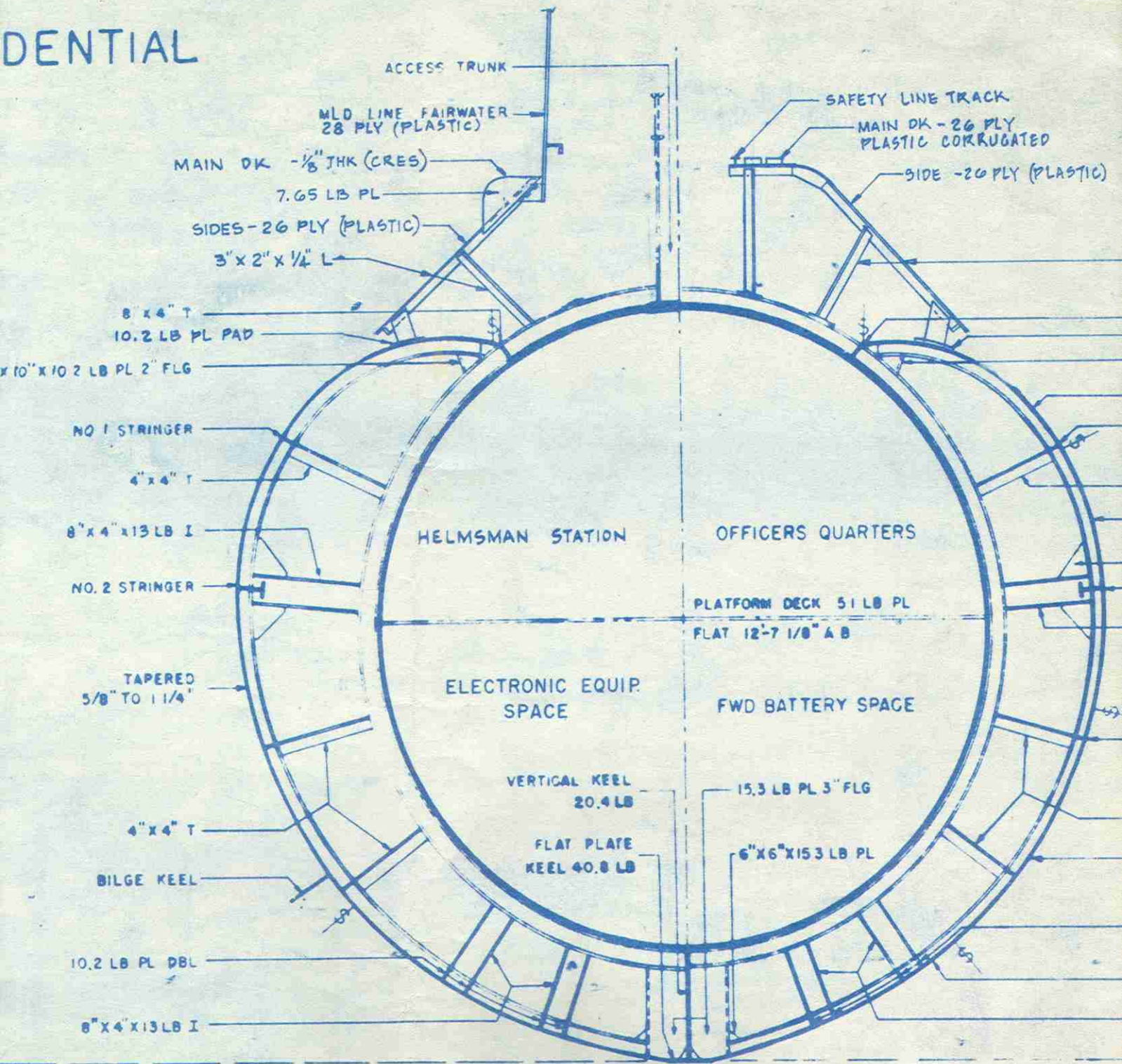
TABLE OF SCANTLINGS			
NAME	EXTENT	DIMENSIONS	REMARKS
BILGE KEEL	FRAME 39 TO 77	17.85 LB PL 15" W	NORMAL TO SHELL
NO.1 STRINGER	FRAME 28 TO 45	4"X4" T	NORMAL TO SHELL
NO.2 STRINGER	FRAME 55 TO 72	8"X4" T	NORMAL TO SHELL
NO.3 STRINGER	FRAME 28 TO 45	4"X4" T	NORMAL TO SHELL
	FRAME 55 TO 72		

ED  
(PLASTIC)



SECTION FR 32  
LOOKING FWD

DENTIAL

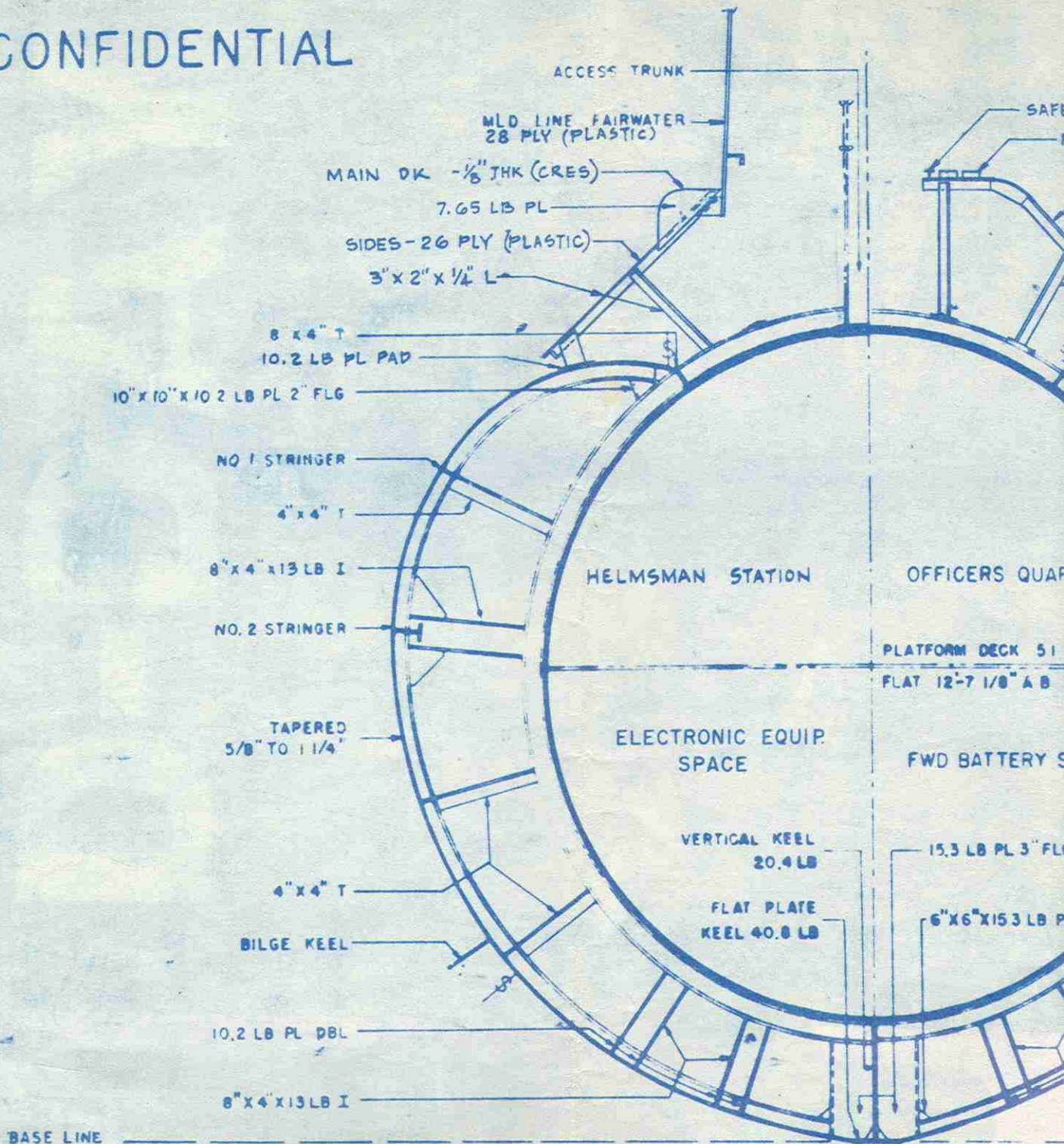


SECTION FR 44  
LOOKING AFT

SECTION FR 36  
LOOKING FWD



CONFIDENTIAL



SECTION FR 44  
LOOKING AFT

SECTION FR 44  
LOOKING FORWARD