

MI Work . . .

CONTINUED FROM PAGE 2

MARIANO G. VALLEJO

Post-launch major work is machinery alignment. Main push, naturally, is toward completion in the control room, engineroom, reactor compartment, along with other vital areas. Maximum effort, is being put forth by all trades involved, and this must continue, said Assistant Shipbuilding Supe CDR A. L. Palazzolo, reporting in the absence of Ship Supe LT Al Hawk.

Foam plastic was poured in the reefer spaces last weekend; high pressure brine pump was tested and installed. Piping progress: satisfactory.

MEDREGAL

CWO "Ed" Edwards says that first part of sail mast is going in and that all fitting out of the sail is proceeding ahead of sked. Ship Supe Edwards stressed that the ship is requesting shortened sked dates. All trades are putting forth top efforts. Last portion of sail is expected aboard by Monday, Nov. 15. Shop 31 is especially commended by Edwards for the spirit in which the men have performed their tasks.

TRIESTE II

Where Design has come through with plans which can be worked, the trades are doing admirably on the float.

GURNARD

Foundations in the engine room for main propulsion equipment are being worked on "the 662." Platform decks throughout the sections on the ways are in. Section 9 was landed Monday, Nov. 8.

GUITARRO

Pre-fab on this newly named fast attack submarine is occupying structural employees. LT Hal Bullock is ship supe for this one.

The Pipeline

HUNTERS POINT

Personally Speaking
P&E DIVISION

(By Naomi Howard) — Our deepest sympathy to Bob Carroll, Advance Planning Section, on the loss of his daughter.

GET well wishes to Elden Hook, Systems-Procedures unit, who recently underwent surgery. Nice to see Mary Alice Lane back at her desk in the Typing unit after being hospitalized; also John McGrath of Job Planning, who was out for several months with a broken hip.

Congratulations to LT Niel Nielsen, Type Desk 215, on being selected for lieutenant commander. Also on the selection list is LT Kiefer, now on ServRonThree Staff, Subic, who was ship supe on the HORNE.

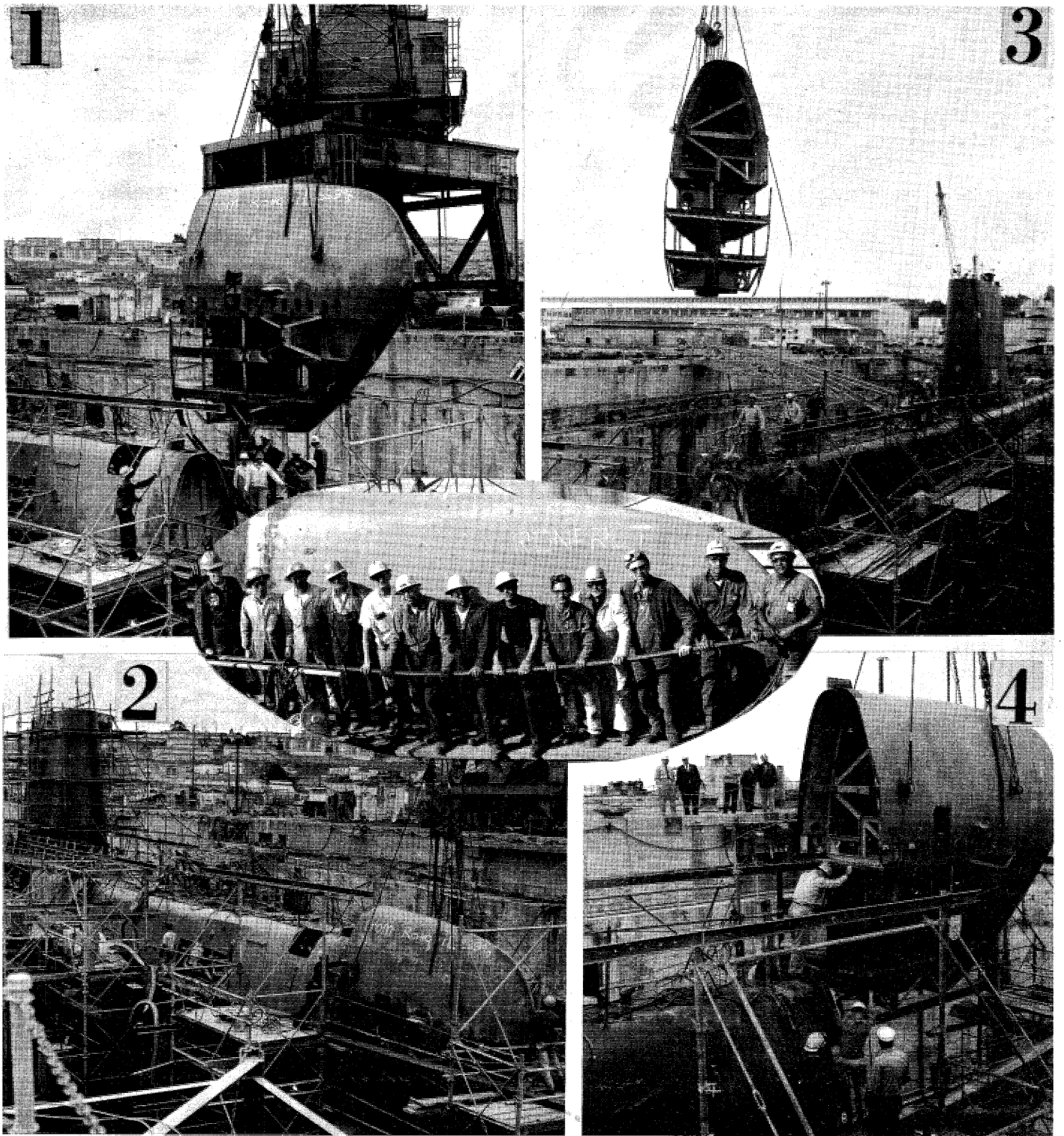
GOODBYS were said to Jane Pearson, Code 226A, who has returned home to Rhode Island, and to Marvin Glasner, supervisor planner and estimator of Code 227, who has transferred to Mare Island Division. Howard Scott is now acting supervisor of the section.

MARE ISLAND

SHOP 67

John Martin and Neil Yepsen have been promoted from the shop to 12th Naval District Maintenance Engineers. Wilmer Sibbach, former Electronics Mechanic Systems Mechanic, is now an inspector with Quality Assurance Division, Code 304. Kevin Driscoll of Planning is leaving to join Data Processing Group. Congratulations!

CONTINUED ON PAGE 4



Hunters Point Men Take Bow for Taking Bow

HUNTERS POINT — Docking here recently, USS POMFRET (SS 391) came in for repairs to a collision-damaged bow. Because ComSubPac wanted 391 back on station as quickly as possible, the entire bow section of USS RONQUIL

(SS 396)—from frame ten forward—was borrowed and transferred to POMFRET.

Decision sped the repair of POMFRET and reduced the number of manhours on the job. RONQUIL happened to be here but had a longer avail-

ability.

Photo 1 shows bow coming off RONQUIL and 2 is an earlier shot; photo 3 shows RONQUIL's bow in air over POMFRET and 4 shows it sliding down to its resting place.

Men in oval pic (l to r) are

POMFRET crew member A. Montgomery, Shop 11ers C. Y. Toy, Angelo Zara, C. Haynes, D. Shannon, J. Blake, W. Simien, D. Oliver; Shop 26ers Y. Tong, J. Feld, M. Myres; Shop 72ers L. Renfroe, Allen Muldoon.

Chief to Leave . . .

CONTINUED ON PAGE 3

Houston, Texas, is a bio-chemist married to a mechanical engineer.

Before he landed on Mare Island in 1951, most of the broadshouldered Chief's Government service had been in the air. An Army Signal Corps instructor in WWI, he saw young flyers through every phase of their training. Not an easy job. "Some," he said, "froze at the controls."

Anticipating the second World War, he took a refresher course in flying, but learned that he was too old to become a pilot in the U.S. Army Air Corps. Croom was a staff pilot with the Royal Canadian Air Force when a change of policy enabled him to transfer to the U.S. AAC, no longer "too old."

He was chief test pilot and officer in charge of aircraft maintenance at Laredo Army Air Base, and served with the occupation forces in Japan. Released from active duty in 1950, the present Chief retired as a lieutenant colonel in the Reserve in 1962.

Marey Hunter's Comebacks

LIKE MacARTHUR

DEAR MAREY HUNTER—Where you been keeping yourself? Your column is my favorite reading in the paper and I miss your wry remarks—SHOP 02ER.

DEAR 02ER — Crowded out by great events, like General MacArthur we now have returned. We didn't know you cared!—MAREY HUNTER.

SKED CHANGE ON SHIP
DEAR MAREY HUNTER—How cum the MT. BAKER's still at Mare when the great big push was on to finish her ahead of sked?—CURIOUS ON WATERFRONT.

DEAR CURIOUS O. W.—Work is all finished on the MT. BAKER. She was completed ahead of schedule, thanks to willing workers like you. However, the Commanding Officer received a change of orders for the ship from Washington. That is why she is still here. And no fault of Mare Island's. MAREY HUNTER.

BLUSHES OF PLEASURE

DEAR MAREY HUNTER—I wish to thank you for your very nice note and for sending me the copies of the GRAPEVINE-DRYDOCKER. I want

to congratulate you and your staff for the outstanding Souvenir Edition of Oct. 22.

Launching day was a thrilling day for all of us. I am especially proud that my son is going to be one of skippers of that wonderful VALLEJO. Thank you for your thoughtfulness and kindness. Sincerely—DOROTHY K. NUNNELY.

DEAR MRS. NUNNELY—We publish your gracious note not because we wish to seem to solicit more of the same, but because it was a pleasure for us to provide you with the launching issues for the VALLEJO. Also, we have received so many, many kind words, written and spoken, from shipyarders at both locations, SFBNS, and from visitors, that the staff feels more than compensated for the extra efforts put forth in behalf of "the 658." Thanks so much.—MAREY HUNTER.

DO YOU KNOW . . .

That the "Charlie Noble" used for galley smoke pipe came from a British Navy Merchant Marine captain who required a high polish on same? NAVNEWS said so.

Commute Info

MARE ISLAND

Call Lillian Palmer, ext. 8106

RIDES AVAILABLE

BENICIA; BERKELEY; FAIRFIELD (day or swing); HUNTERS POINT DIVISION (bus); MARTINEZ; MILL VALLEY; NAPA; (29 - and - 30 - passenger buses); Bel Aire (day and swing); Coombsville, First, Foster (swing); Greenback (swing); Hermosa, Lassen, Hedgeside, Linda Vista, Sequoia, Shasta, Sonoma, Vichy Springs (bus); OAKLAND; PETA-LUMA; RICHMOND; SAN FRANCISCO (day and swing); SAN PABLO; SAN RAFAEL (bus); SANTA ROSA (day, swing, graveyard); SEBASTOPOL; VACAVILLE (bus); VALLEJO: Benicia Road, Castlewood Gardens, Flemington, Parrott, Rancho Vallejo, Redwood (bus); Tennessee Manor (bus); WINDSOR; WALNUT CREEK.

RIDES WANTED

CONCORD; COTATI; FAIRFIELD; HAYWARD; NAPA; Alta Heights, Bel Aire, Menlo, Monticello Park, MILL VALLEY, Thrower, Westwood subdivision; Vichy Springs, OAKLAND; PETALUMA; PLEASANT HILL; RICHMOND ANNEX; SACRAMENTO; SAN FRANCISCO; VACAVILLE;

CLUBS

CONCORD; EL CERRITO; FAIRFIELD; HAYWARD; NAPA; Alta Heights, Bel Aire, Menlo, Monticello Park, MILL VALLEY, Thrower, Westwood subdivision; Vichy Springs, OAKLAND; PETALUMA; PLEASANT HILL; RICHMOND ANNEX; SACRAMENTO; SAN FRANCISCO; VACAVILLE;

CONTINUED ON PAGE 4