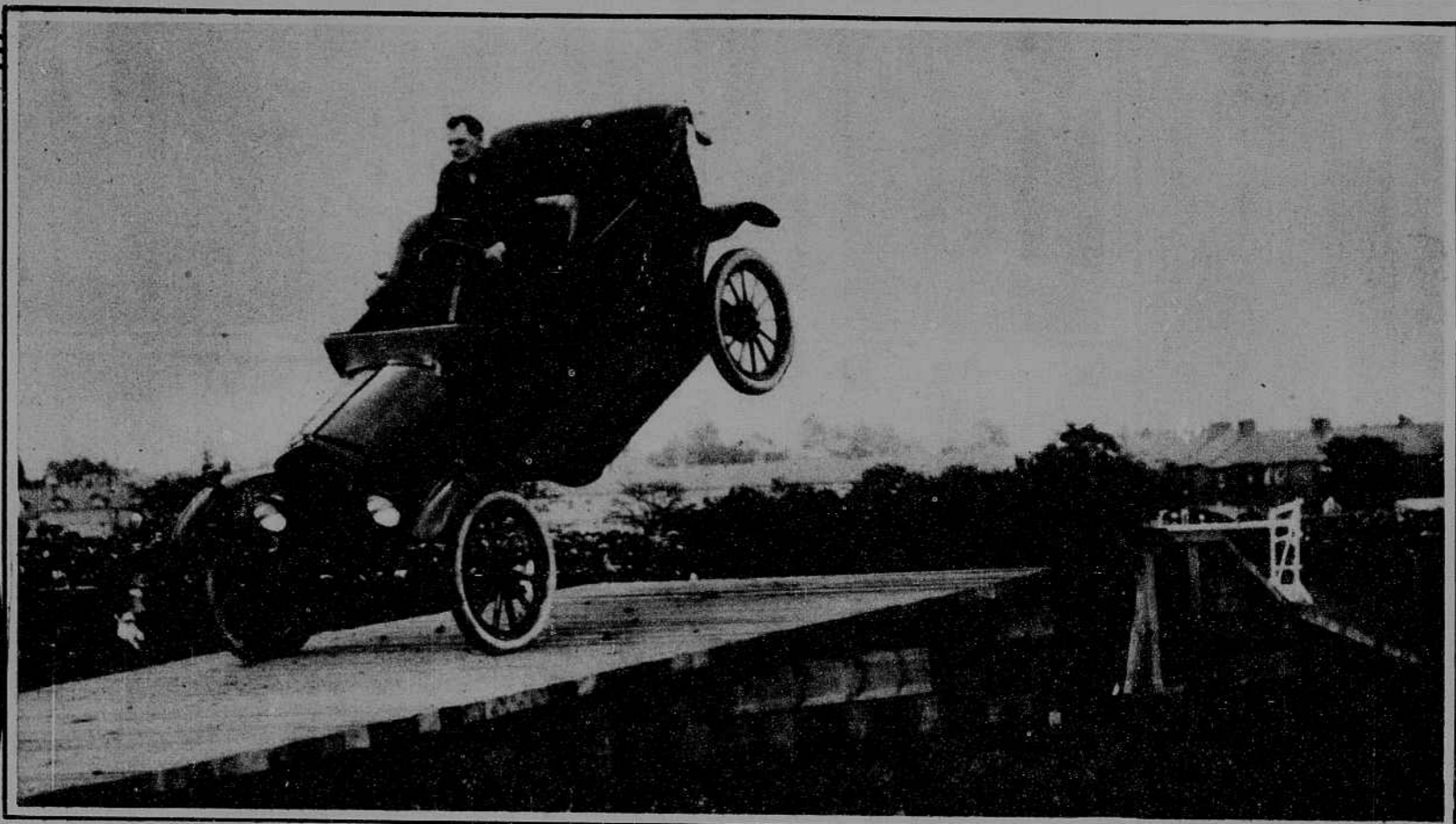


NOT TWO SPEEDING MOTORBOATS in the N. Y. Y. C.'s annual Block Island run, but one of your Uncle Samuel's latest type submarines coming to the surface with a rush after a deep dive in a choppy sea somewhere along the Pacific Coast.  
*Underwood*



A MODERN MADONNA. An appealing camera study of Mrs. Karin Ziegler, of Vienna, and her little daughter, that suggests the brush of an old master.  
*Keystone*



LIZZIE KICKS UP HER HEELS. A typical Detroit flivver performs for the crowds at a recent agricultural show in York, England, by going Ned Gourdin of Harvard, one better in the running broad jump, and clears a reported distance of forty feet.



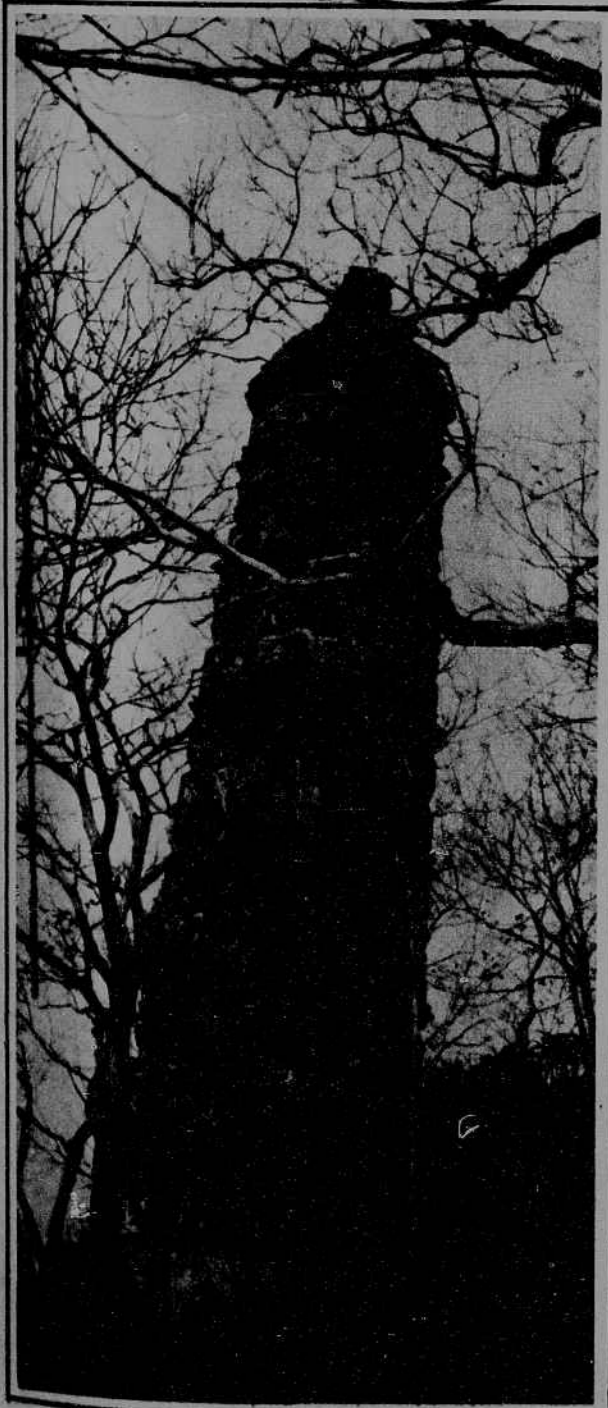
Right—MRS. LESLIE CARTER, from a new camera portrait made in Paris where she is rehearsing in the Selwyns' production of "The Circle," Somerset Maugham's comedy which has created such a sensation in London the past year. "The Circle" will be seen in with an all-star cast New York this season which includes John Drew, Mrs. Carter and Estelle Winwood.



Above — PULLS SIXTY-THREE TIMES ITS OWN WEIGHT. An interesting demonstration of a beetle's strength — the insect weighs 1/2 gram, the little cart weighs 31 1/2 grams, yet Mr. Beetle dragged the load easily all over the place. If a 150-pound man were as proportionately strong he would readily be able to move a load of 9,450 pounds, or almost five tons.  
*Dr. E. Bada*



Left—A DANGEROUS PET. R. W. Scott, of Mt. Kisco, with Mingo, a three-months-old Guatemala leopard, draped about his neck. The treacherous little feline, who nipped a piece out of Mr. Scott's ear a moment after this snap was taken, was captured before its eyes were opened by Mr. Scott while on a recent hunting trip in Central America.  
*Vander Veer*



Left—PISA'S CHINESE IMITATOR. The Leaning Buddha, a twelfth century pagoda near Nanking, whose thirteen stories tower 100 feet high. The octagonal Buddhist shrine is twelve feet out of plumb while Pisa's famous 179-foot leaning tower is 16 1/2 feet off the perpendicular. The Chinese tower would lean even more than Pisa if it were of equal height.  
*Neville*

Right—THE CALL OF THE NORTH. Days of real sport in the Laurentian Mountains district of Quebec—assisted by an Indian guide, a dyed-in-the-wool fisherman from the States lands a four-pound brook trout. Meanwhile we'uns must swelter in our humid New York offices, —  
*Canadian Pacific*

