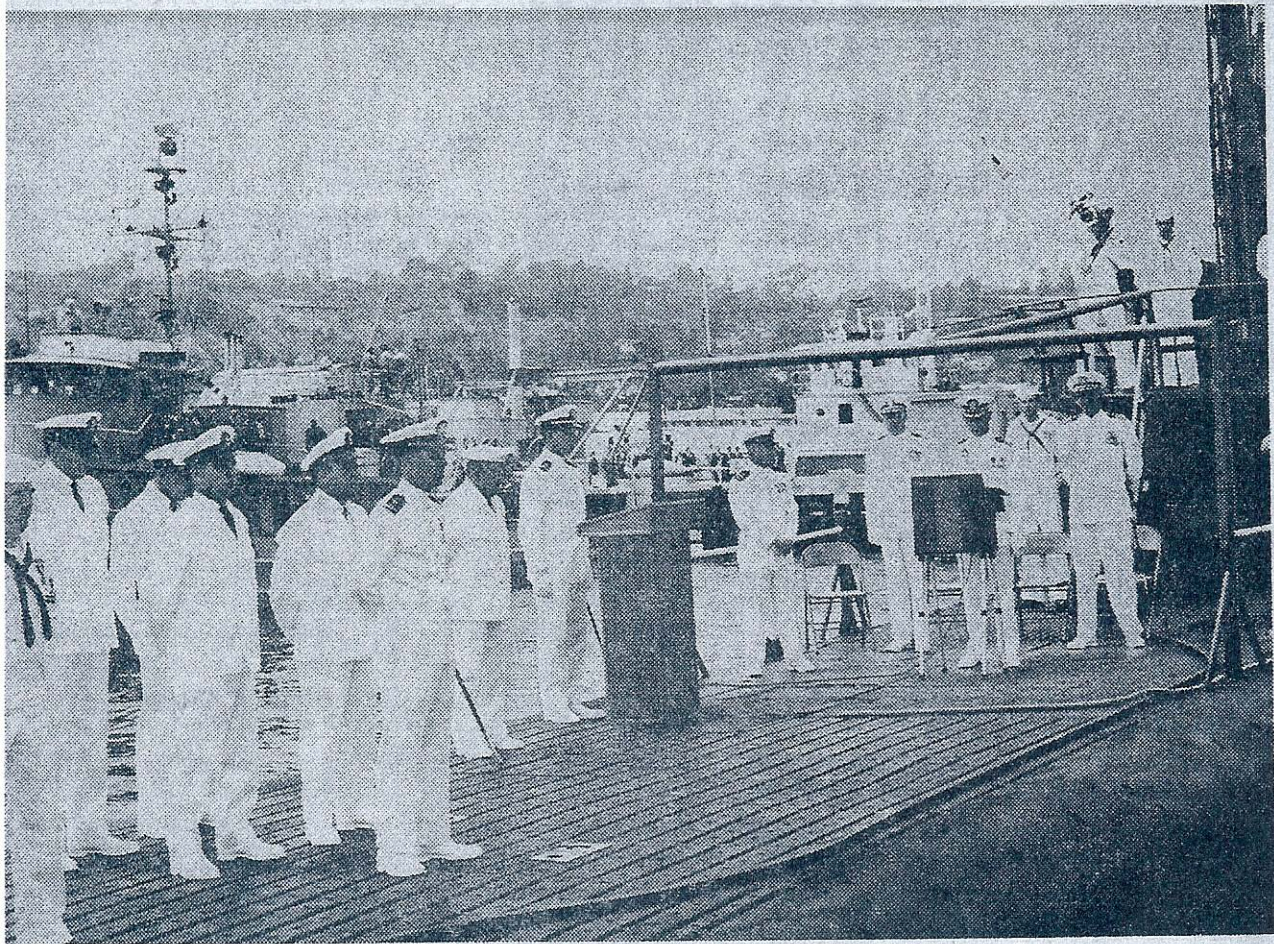


Final Rites For Sub



—Staff Photo

Submarine Archerfish, which had distinguished combat record in World War II and then served as ocean research vessel, is decommissioned in cere-

monies at Point Loma pier. Sub, noted for all-bachelor crew during ocean survey duty, will be stripped of equipment and sunk as a target.

PRESIDENTIAL UNIT CITATION

"For extraordinary heroism in action during the Fifth War Patrol against enemy Japanese combatant units in restricted waters of the Pacific. Relentless in tracking an alert and powerful hostile force which constituted a potential threat to our vital operations in the Philippine area, the U. S. S. ARCHERFISH culminated a dogged six and one-half-hour pursuit by closing her high speed target, daringly penetrated the strong destroyer escort screen and struck fiercely at a large Japanese aircraft carrier with all six of her torpedoes finding their mark to sink this extremely vital enemy ship. Subjected to devastating air and surface anti-submarine measures, the ARCHERFISH skillfully evaded her attackers by deep submergence and returned to port in safety. Handled with superb seamanship, she responded gallantly to the fighting determination of her officers and men and dealt a fatal blow to one of the enemy's major Fleet units despite the most merciless Japanese opposition and rendered valiant service toward the ultimate destruction of a crafty and fanatic enemy."

For the President,

/s/ James FORRESTAL
Secretary of the Navy

COMSUBPAC UNIT COMMENDATION

"For exceptionally meritorious service as a member of the Submarine Force during the period 10 May 1960 to 7 February 1967. USS ARCHERFISH (AGSS-311), the only oceanographic research submarine in the United States Navy, conducted Operation SEA SCAN in pursuit of oceanographic data to further scientific and technical knowledge of the world's oceans. ARCHERFISH logged over 386,000 miles underway in the prosecution of this demanding task, being underway about 65% of the total time involved, including upkeep, repair and shipyard overhaul periods. Despite an average annual underway distance of over 60,000 miles, well in excess of the Submarine Force average, ARCHERFISH consistently has met commitments with superb engineering reliability and performance. ARCHERFISH conducted a demanding special, high priority survey project in 1966, in addition to the regular SEA SCAN requirements, in an expeditious and effective manner. Throughout this period, ARCHERFISH, manned by a bachelor crew, has not only performed in a thoroughly professional manner but has also acted as an outstanding representative of the United States, the Navy and the Submarine Force in many ports not frequented by submarines. The impressions and image established on these visits have been of great credit to the Force. The superlative, sustained performance of ARCHERFISH in all aspects of operations, administration and public affairs reflects glowingly on her Commanding Officer, officers and men, and is in keeping with the highest traditions of the United States Navy and the Submarine Force."

J. H. MAURER

Rear Admiral, U. S. Navy

U.S.S. ARCHERFISH AGSS 311



Decommissioning

1 May 1968 San Diego, Calif.

PAST COMMANDING OFFICERS

SEP 43-MAY 44 LCDR G.W. KOHL, USN
 MAY 44-SEP 44 LCDR W.H. WRIGHT, USN
 SEP 44-NOV 45 CDR J.F. ENRIGHT, USN
 NOV 45-MAY 46 CDR C.J. BEERS, USN
 MAY 46-MAR 52 RESERVE FLEET
 MAR 52-AUG 55 LCDR M. Des GRANGES, USN
 AUG 55-JUL 57 RESERVE FLEET
 JUL 57-SEP 59 LCDR C.E. BECK, USN
 SEP 59-MAR 60 LCDR W. EVENS, USN
 MAR 60-SEP 62 LCDR K. WOODS, USN
 SEP 62-NOV 63 LCDR J.N. LYMAN, USN
 NOV 63-NOV 64 LCDR T.R. EAGYE, II, USN
 NOV 64-NOV 65 LCDR G.W. ENGQUIST, USN
 NOV 65-SEP 67 LCDR R.B. Mc COMB, USN
 SEP 67-MAY 68 CDR J.P. WOOD, USN

PROGRAM

National Anthem COMCRUDESPEC Band
 Invocation Chaplain R.W. ALDRICH
 Remarks by
 Commander Submarine Development Group ONE
 CAPT A.G. BEUTLER, USN
 Naval Oceanographic Office Representative
 CDR R.B. Mc COMB, USN
 Commanding Officer, USS ARCHERFISH
 CDR J.P. WOOD, USN
 Lowering of Colors
 Benediction Chaplain R.W. ALDRICH

Commodore BEUTLER, honored guests, officers and men of the ARCHERFISH.

First of all, I would like to express, on behalf of all of us in ARCHERFISH, our appreciation to our guests for finding time today to share this moment with us.

It is very difficult in these few minutes to properly honor a ship such as ARCHERFISH, but it deserves our best efforts - a ship whose service career spans just less than a quarter of ^a century - a ship whose exploits have been of the highest order both in times of peace and in times of war as evidenced by the coveted Presidential Unit Citation and the COMSUBPAC Unit Commendation which have been reproduced in their entirety on the backs of today's program - a ship which throughout its wide travels, has safely carried its crew to the shores of most of the coastal nations of the world - a ship whose total-miles-steamed will surely remain a submarine record for many years to come.

The relation between a ship and her crew is always unique, and in the case of ARCHERFISH and her entirely bachelor crew, it can best be described as having been a labor of love. This ship has not been merely the locale of a crew member's eight-to-four job, nor has it been a place where he must occasionally remain overnight in a duty status. It has rather been a home for each man on board - and to some of our current personnel, a home for as long as six years. During each night inport - except perhaps early during foreign port visits - the duty section has generally been augmented by crew members in a liberty status who chose to remain on board tinkering and adjusting various pieces of the ship's machinery their ship's machinery. The concept of a crew composed of only single men had never before been employed in the Navy, but it was implemented on board ARCHERFISH to permit survey operations in remote areas for extended periods of time. In many cases, a year or more has passed between the departure and return of this ship to its homeport. This concept permitted ARCHERFISH to remain underway for 65 - 70% of each year, far above the Fleet average.

With regard to an entirely single crew, the experiment has without doubt been an unqualified success, and I sincerely hope there will be more such crews in the future. For each uninformed person who has asked me if I haven't experienced a great deal of problems with an all-bachelor crew, I've had dozens of well-informed people comment to me on the outstanding cleanliness of this ship, on the camaraderie and esprit of the crew, and on the unusually cooperative attitude of our personnel in dealing with other activities. Our files are filled with letters from Port Authorities and City Officials throughout the Pacific area complimenting the various ARCHERFISH Commanding Officers on the behavior and good will fostered by this crew and its predecessors,

To this crew, I can say only that today is indeed a sad moment for each of us. We are leaving a home with which we have come to have a truly personal relationship. Be assured that this decommissioning is not as a result of her past performance or a lack of care on your part - far from it. Rather, it is because she has become that which our Navy cannot and will not accept in its ships, equipment, or personnel. That is, obsolescent. There is a message there for each of us. We must continue to grow in technical skill and knowledge in each of our particular fields in order to keep pace with the technological race in which our Navy is now so desperately engaged. Almost as a symbol of its obsolescence, ARCHERFISH wears the JT sonar hydrophone on its bow as though proudly proclaiming its era and also reminding us of the tremendous advances made during the twenty-five years since this ship was launched. The challenge is there, and I know each of you can and will rise to it.

As we now separate and go our various ways, we can look back on many happy memories, a job well-done, and to the future encounters when we'll meet each other and reminisce about the old days in the ARCHERFISH.