

RESTRICTED

SERIAL NO.
SS 176, 177 & 178 -

U.S. SUBMARINES
PERCH NO.176
PICKEREL NO.177 * PERMIT NO.178
BOOKLET OF GENERAL PLANS

CORRECTED TO SUIT SHIP		
PLACE	DATE	CONSTRUCTION OFFICER
GROTON, CONN	20 Jan 1936	<i>[Signature]</i>
GROTON, CONN	9 July 1936	<i>[Signature]</i>
GROTON, CONN	9 FEB. 1937	<i>[Signature]</i>

ORDER OF PLANS	
SHEET NO 1	COVER
SHEET NO 2	GENERAL DIMENSIONS & DATA
SHEET NO 3	MAIN DECK
SHEET NO 4	OUTBOARD PROFILE
SHEET NO 5	PLATFORM DECK
SHEET NO 6	HOLD
SHEET NO 7	INBOARD PROFILE

ELECTRIC BOAT COMPANY, GROTON, CONN.	
DATE	DEC. 27, 1935
DRAWN	LWC
TRACED	A.M.S.
CHECKED	A.H.B.
EXAMINED	<i>[Signature]</i>
APPROVED	<i>[Signature]</i>
CONTRACTOR'S PLAN NO	1339-12
C&R.No.	206612

PRINCIPAL DIMENSIONS

HEIGHTS

COMPLEMENT

HOSE CONNECTIONS - WATER

SMALL BOATS

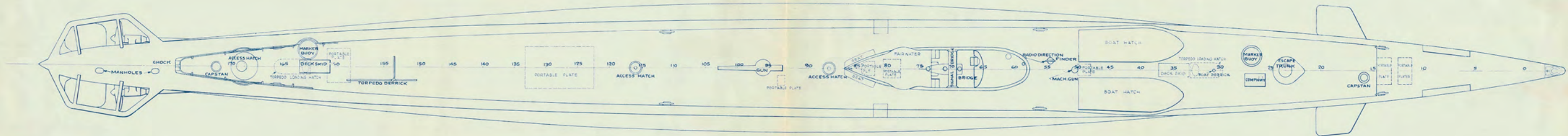
LENGTH OVERALL	300' 6 3/4"
LENGTH BETWEEN PERPENDICULARS	292' - 6"
PROJECTION FORD OF FP	8' 0 3/8"
LENGTH ON STRAIGHT KEEL	140' - 6"
BREADTH MOLDED	25' 0 1/4"
BREADTH EXTREME	25' 1 1/2"
DRAFT - SURFACE CONDITION TO UNDERSIDE OF KEEL PLATES (MEAN)	15' - 2 1/8"
RATIO - LENGTH TO BEAM	11.67
SHAFTS DIVERGE AT ANGLE WITH ϵ SHIP	1" 43' 41"
SHAFTS ϵ AT REDUCTION GEAR (10 1/4" AFT FR 155) FROM ϵ SHIP	3' 7 1/2"
SHAFTS ϵ AT FR. 181 FROM ϵ SHIP	5' 2"
SHAFTS ϵ AT REDUCTION GEAR (10 1/4" AFT FR 155) ABOVE BASE LINE	8' 0 3/4"
SHAFTS RAKE OUTBOARD AND AFT	.0301" PER INCH FROM ϵ
SHAFTS RAKE FROM BASE LINE AND FORD	.0158" PER INCH FROM B L
SHAFTS ϵ FROM BASE LINE AT FR 181	7' 3"
SCREWS CENTER FORD OF A. P.	16' 0"
RUDDER AXIS FORWARD OF A. P.	9' 0"
NUMBER OF FRAMES	192
FRAME SPACING	BOW TO FR 34 - 24" FR 34 TO FR 86 - 15" FR 86 TO FR 92 - 24" FR 92 TO FR 154 - 15" FR 154 TO STERN 24"

LOWEST POINT OF KEEL TO TOP OF STRENGTH	
HULL AMIDSHIPS ON ϵ	19' - 7"
LOWEST POINT OF KEEL TO TOP OF BRIDGE	
DECK	28' 5 3/4"
LOWEST POINT OF KEEL TO TOP OF CONNING	
TOWER PLATING	27' - 11"
LOWEST POINT OF KEEL TO TOP OF SIGNAL	
BRIDGE	37' - 3 1/2"
LOWEST POINT OF KEEL TO TOP OF HIGHEST PERISCOPE EXTENDED	60' 10 1/2"

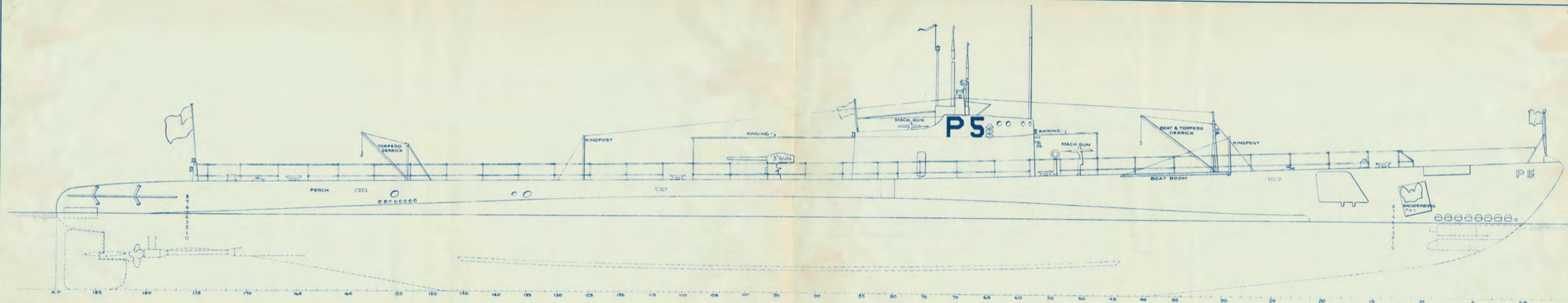
COMMANDING OFFICER	1
EXECUTIVE OFFICER	1
WARD ROOM OFFICERS	3
TOTAL OFFICERS	5
SEAMEN BRANCH	16
ARTIFICER BRANCH	12
ENGINE ROOM FORCE	15
SPECIAL BRANCH	2
COMMISSARY BRANCH	2
MESSMEN BRANCH	2
TOTAL CREW	49

NAME	LOCATION	NO	SIZE
FIRE AND WASH DECK HOSE	MAIN DECK FORD	1	1 1/2"
FIRE AND WASH DECK HOSE	MAIN DECK AMIDSHIPS	1	1 1/2"
FIRE AND WASH DECK HOSE	MAIN DECK AFT	1	1 1/2"
FIRE AND WASH DECK HOSE	FORD TORPEDO ROOM	1	1 1/2"
FIRE AND WASH DECK HOSE	CONTROL ROOM	1	1 1/2"
FIRE AND WASH DECK HOSE	ENGINE ROOM	1	1 1/2"
FIRE AND WASH DECK HOSE	MANEUVERING ROOM	1	1 1/2"
FIRE AND WASH DECK HOSE	AFT TORPEDO ROOM	1	1 1/2"
FIRE AND WASH DECK HOSE	OFFICERS QUARTERS	1	1 1/2"
FIRE AND WASH DECK HOSE	CREWS QUARTERS	1	1 1/2"

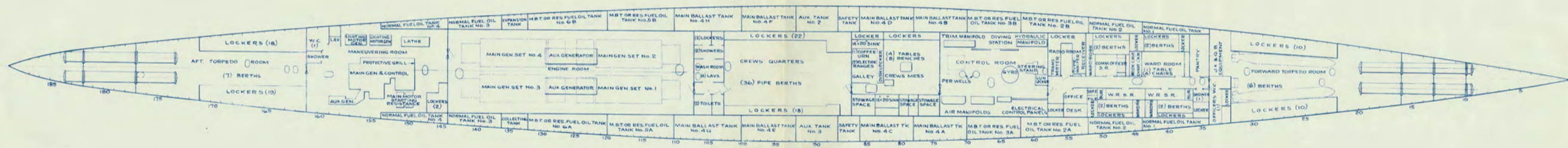
NO	NAME
2	20' SPECIAL MOTOR BOATS



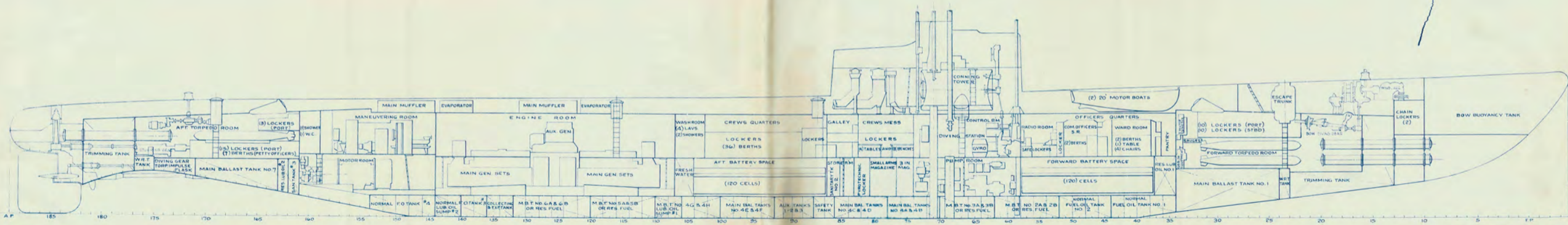
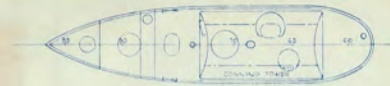
SUBMARINES
 PERCH PICKEREL PERMIT
MAIN DECK
 SCALE: 1/8" = 1 FT. SHEET NO. 3
 C. & R. NO. 206612



SUBMARINE
 PERCH PICKEREL PERMIT
OUTBOARD PROFILE
 SCALE: 1/8" = 1 FT. SHEET NO. 4



SUBMARINES
 PERCH PICKEREL PERMIT
PLATFORM DECK
 SCALE: 1/8" = 1 FT. SHEET No. 5



SUBMARINE'S
 PERCH PICKEREL PERMIT
INBOARD PROFILE
 SCALE 1/8" = 1 FT. SHEET NO. 7
C.B.R. NO. 206612