

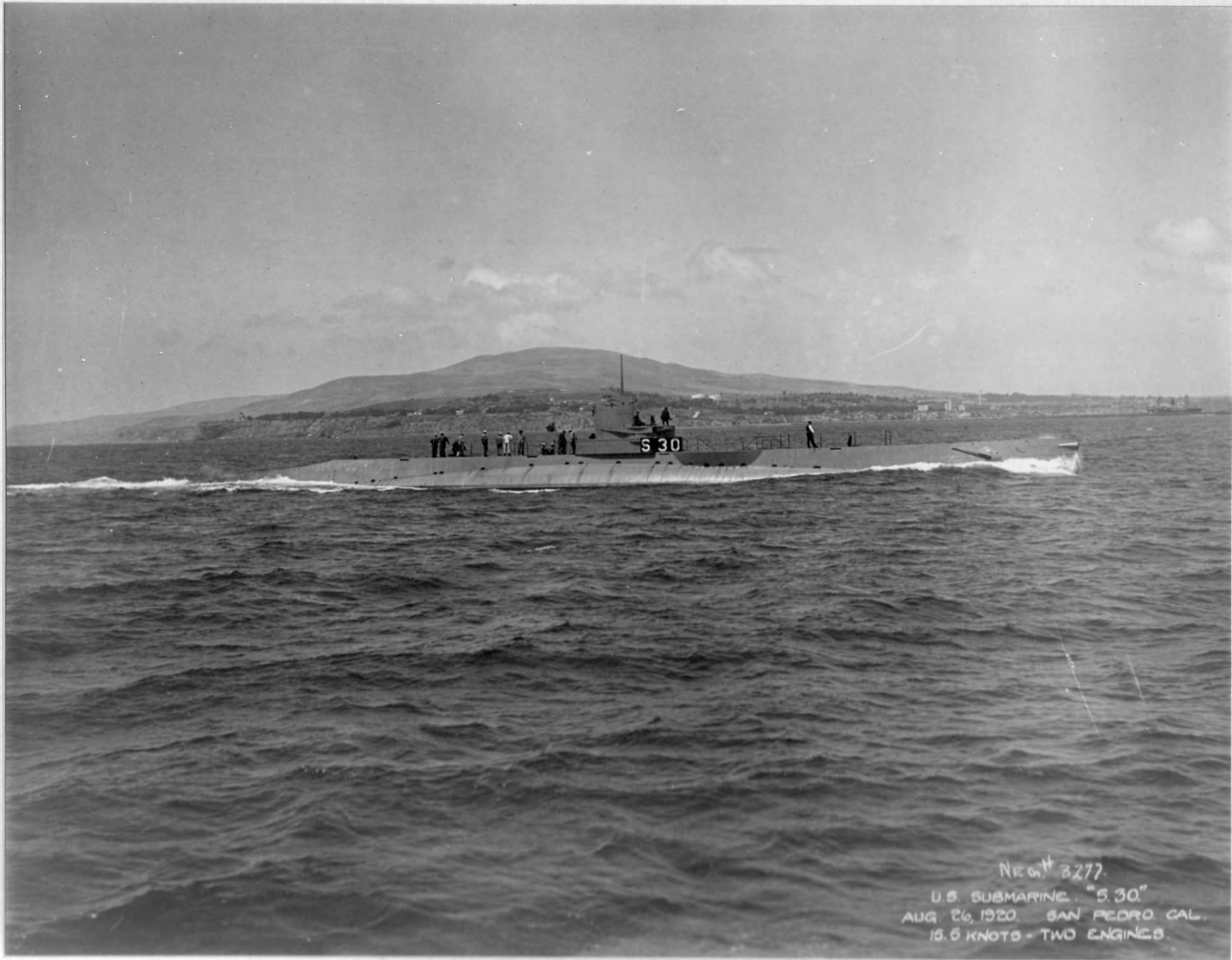
S 30

NEG. # 3297

U.S. SUBMARINE "S 30"

AUG. 26, 1920 SAN PEDRO

112 KNOTS - TWO ENGINES

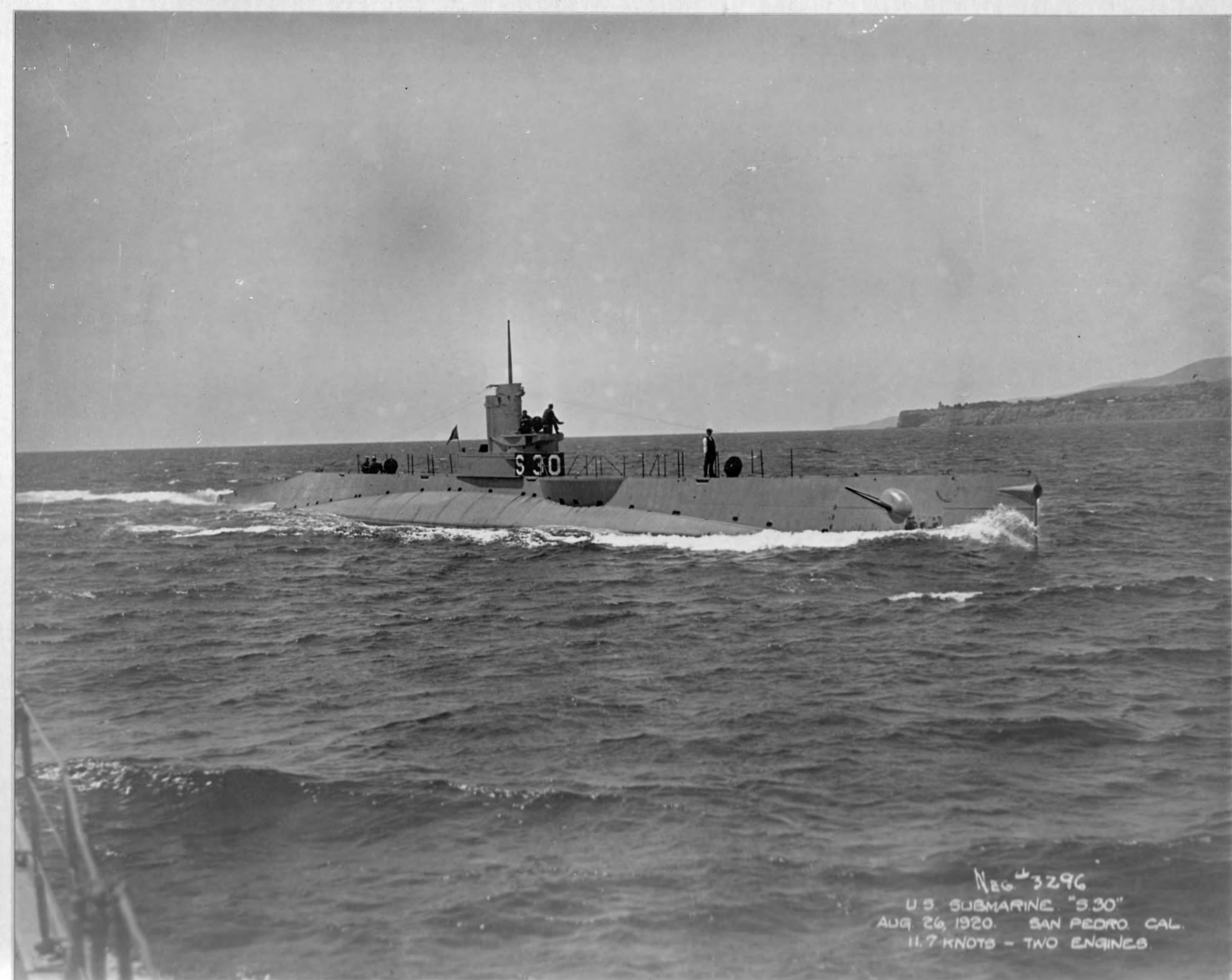


NEG. # 3277.

U.S. SUBMARINE. "S. 30."
AUG. 26, 1920. SAN PEDRO CAL.
16.5 KNOTS - TWO ENGINES.

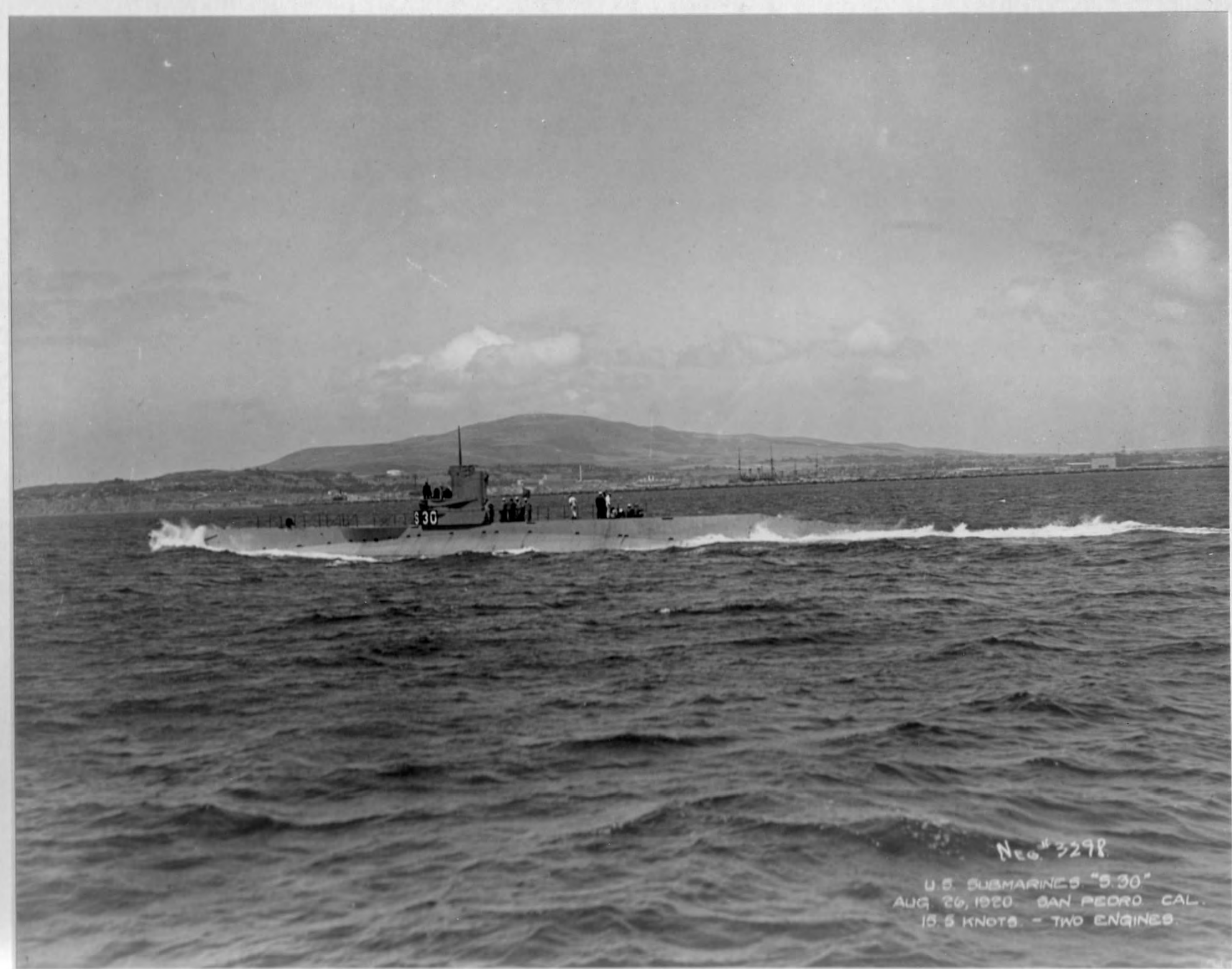


NO. 3295.
U.S. SUBMARINE "S. 30"
AUG. 26, 1920 - SAN PEDRO, CAL.
9.7 KNOTS - ONE ENGINE.



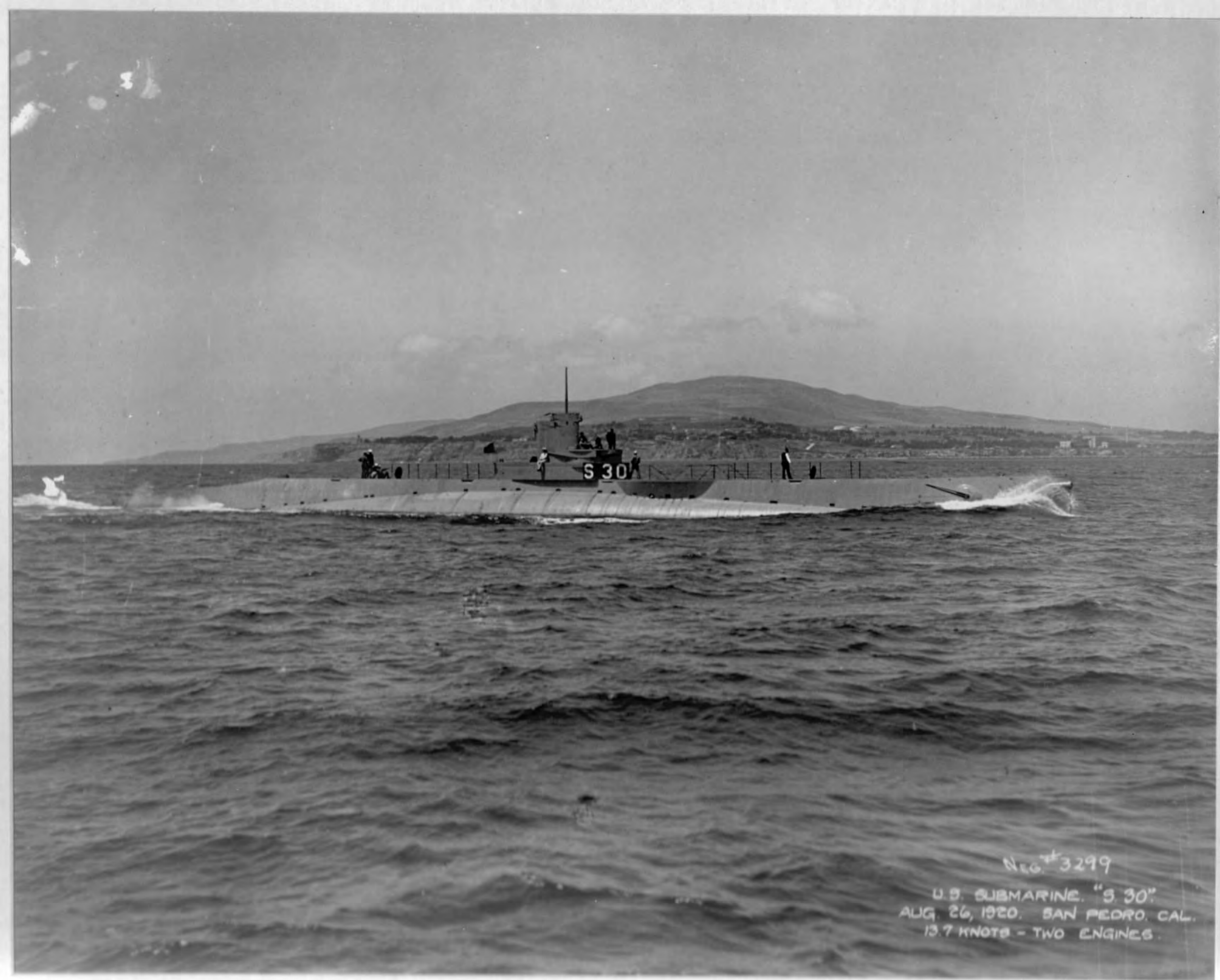
NEG. 3296

U.S. SUBMARINE "S-30"
AUG. 26, 1920. SAN PEDRO, CAL.
11.7 KNOTS - TWO ENGINES



NEG. # 3298

U.S. SUBMARINES "S-30"
AUG 26, 1920. SAN PEDRO CAL.
15.5 KNOTS. - TWO ENGINES.



NEG. #3299

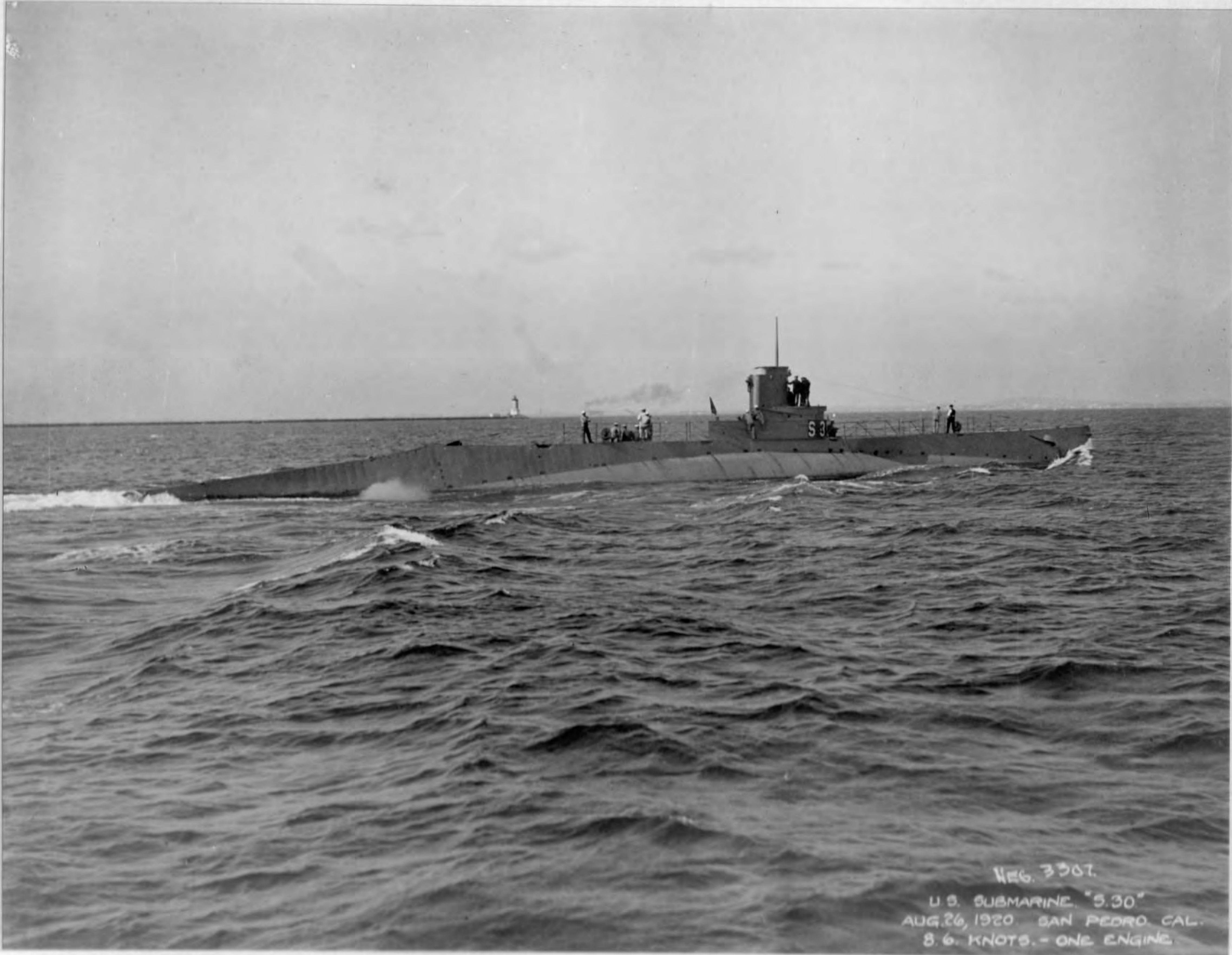
U.S. SUBMARINE. "S. 30"
AUG. 26, 1920. SAN PEDRO, CAL.
13.7 KNOTS - TWO ENGINES.



S 30

NEG. # 3306

U.S. SUBMARINE "S 30"
AUGUST 1918 - SAN PEDRO CAL.
75 KILOTS - ONE ENGINE.



NEG. 3307.

U.S. SUBMARINE "S-30"
AUG. 26, 1920. SAN PEDRO, CAL.
8.6 KNOTS. - ONE ENGINE.

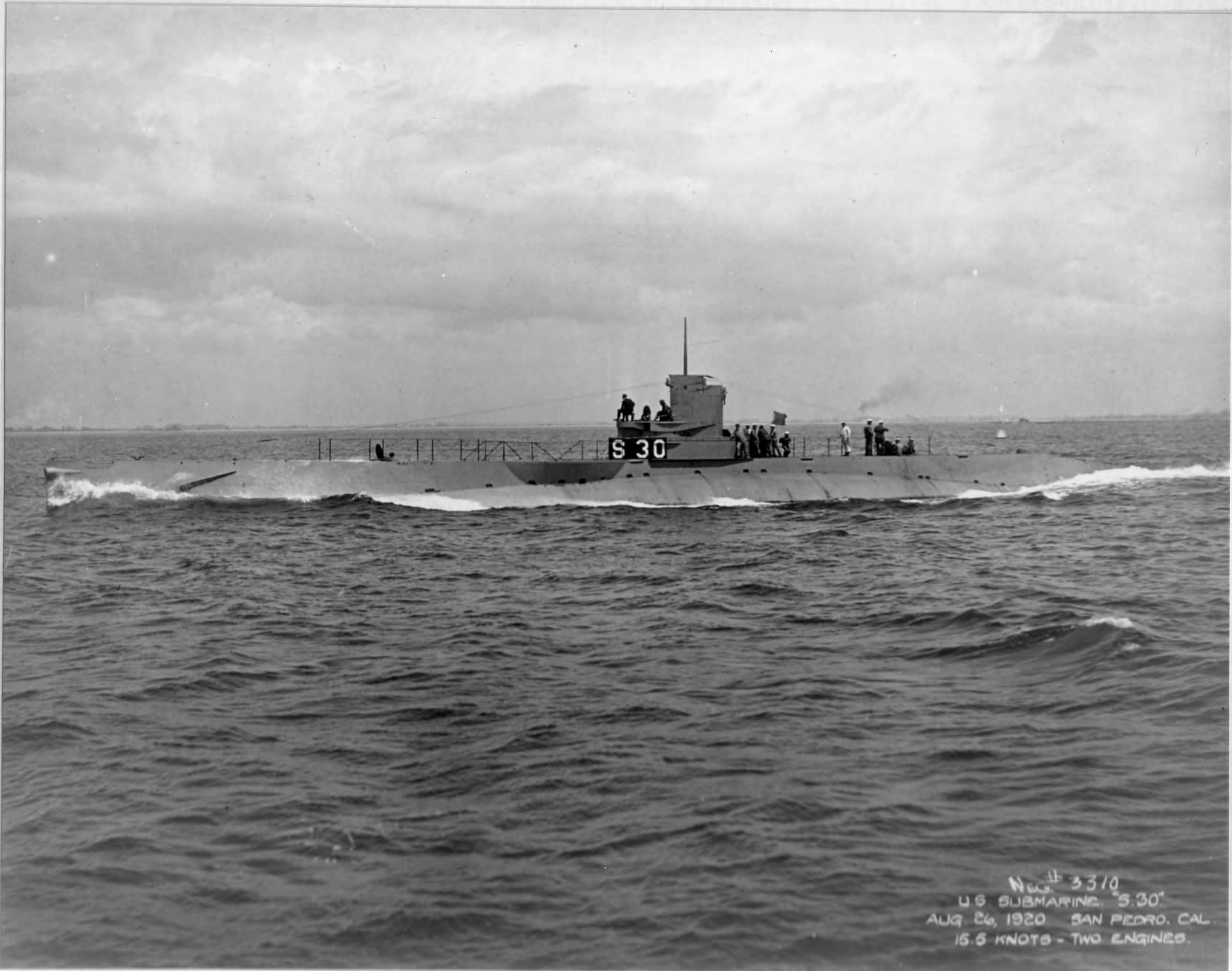


NEG # 33 08

U.S. SUBMARINE "S. 30"
AUG. 26, 1920. SAN PEDRO, CAL.
13.7 KNOTS - TWO ENGINES



Neg. 3309.
U.S. SUBMARINE "S. 30."
AUG 26, 1920 SAN PEDRO CAL
10 KNOTS - TWO ENGINES



S 30

Nav. # 3310
U.S. SUBMARINE "S. 30"
AUG. 26, 1920 SAN PEDRO, CAL.
15.6 KNOTS - TWO ENGINES.



NEG# 3311

U.S. SUBMARINE "S. 30."
AUG. 26, 1920. SAN PEDRO CAL.
11.0 KNOTS - ONE ENGINE.