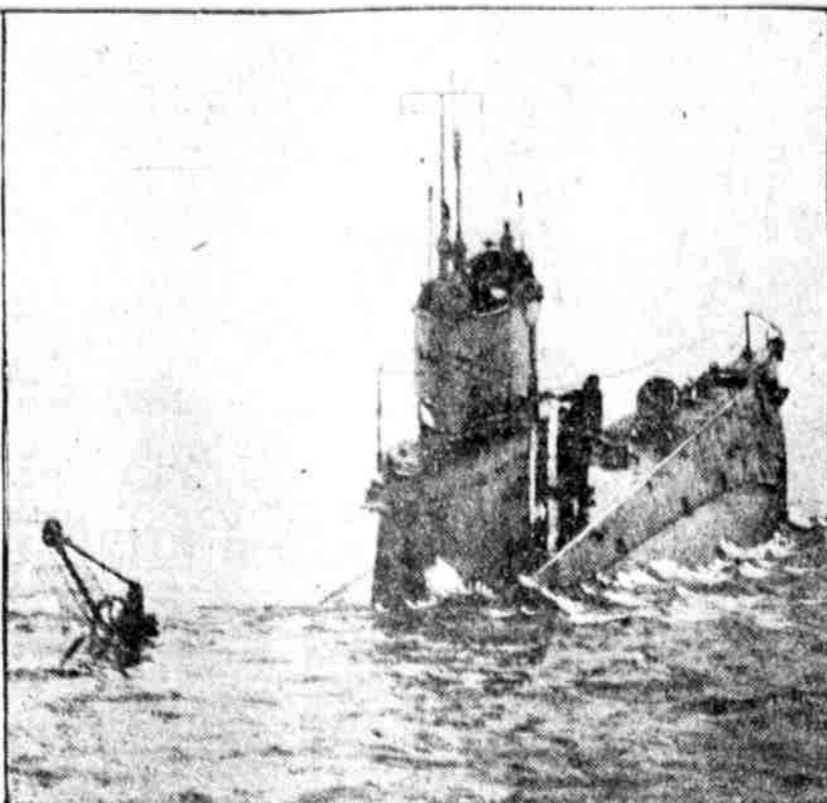


HOISTING LOCOMOTIVE FROM DELAWARE. The Philadelphia and Reading Railway engine that lapsed into the river from the storage tracks in Camden on Monday was started back to rails by a working crew yesterday. For several days divers have been busy attaching ropes from the derrick. The mud is being washed off the engine as it comes from the river bed.



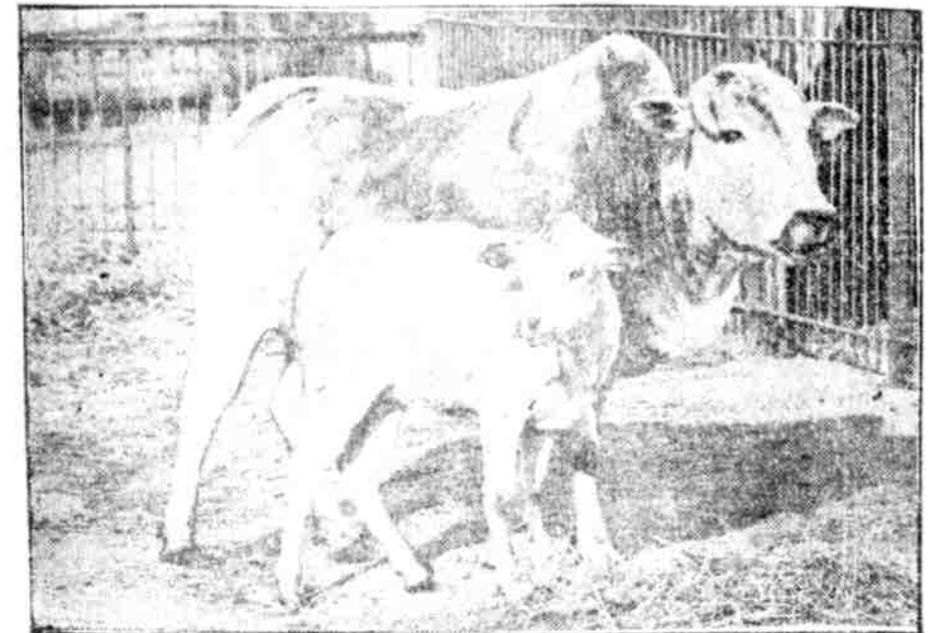
SAFE INSIDE THE DELAWARE BREAKWATER. The U. S. submarine L-1, rammed by the pilot boat Philadelphia off the Delaware capes early Tuesday morning was towed to safety while the heroic crew worked without rest to keep the craft afloat.



IN COMMAND. Lieutenant Robert P. Luker, in charge of the wrecked submersible, assisting in the work of salvaging his ship. With him is Lieutenant Commander Halhook Gibson (right), in command of the submarine base at the Philadelphia Navy Yard.



LEAVING THE L-1. Members of the submarine's crew going to a nearby tug for a good meal and rest after assuring themselves that their boat would not sink. The position of the L-1 as it lies in the water off Lewes, Del., is shown in the background.



ANOTHER ZOO BABY. The newly born zebu posed with its mother inside the iron cage, just as they were finishing a pile of hay, their noon-time meal.



OFFICERS OF THE PHILADELPHIA HIGH SCHOOL FOR 'GIRLS' GRADUATION CLASS. Left to right: Martha Zeeb, Latin salutatorian; Katharine B. Grillet, valedictorian and vice pres.; Kathryn May Bickel, English salutatorian; Elsie Sargent, treasurer, and Gladys Ebersole, sec.



READY FOR THE START. The first British skiing championship ever held has just been completed at Wenger, Switzerland. It will be an annual affair, backed by the Federated Council of British ski clubs.



MISS DOROTHY LYNE, president of the February, 1921, class of the High School for Girls.



FOR IDENTIFICATION—SEE FOOTPRINT CHART. That's the new scheme of identification at the Jewish Maternity Hospital, 532 Spruce street. Dr. Albert Hymans, Mrs. M. H. Verdery, chief nurse, and Dr. Sidney Rosenblatt snapped while getting footprints. The wrist tags and finger print are superseded by this plan.



A. WALDO STEVENSON, chief of treatment of the eye specialists in an interview on the Editorial Page.



READ THIS SLOWLY. George R. Allen, of Ipswich, Mass., a biologist, declares that original Garden of Eden was in the state of Ohio.



AMERICAN LEGION POST JUDGES LIMPIN' LIM'RICKS. The members of Frankford Post, No. 211, American Legion, held a limpin' limrick night last Tuesday and selected the winner of Limrick No. 41, which is announced on page 2 today. In the picture are the members of the post who acted as tellers. They are from left to right (seated, front row) Frederick W. Cassidy, Joe John E. Green, Ralph P. Winters, Clifford K. Fowler, Warren B. Light and George W. Tolson; standing, back row) John H. Gosling, G. Edgar Fleming, Charles A. Harmer, Frank A. Korman, Joseph A. Allen and James L. Adams.



MRS. JOHN PHILIP SOUSA, wife of the bandmaster and composer, is in town for a few days with Mr. Sousa.



"NO TIPS," HIS ORDERS. Sheriff Robert Lamberton has made it clear that lawyers must not offer extra compensation to members of his staff.

OUR CITY'S WORKERS AND WHAT THEY DO



FRED MAYER, of Four Washington, putting locks on steel frames at the Library Bureau Shop, 910 Chestnut street. Four cabinets are fitted with locks in a day by Mayer.



MARRIES MARQUIS DEGLI ALBIZZI. Miss Mary Keifer, of Shaws City, Iowa, first met her husband while doing work for the Near-East Relief in the Caucasus. They will both return to that work.



THREE YEARS AT TENTH AND MARKET STREETS. Patrolman Wilmer M. Hall, of 3219 Woodland avenue, Hall is twenty-seven years old and is single. He has been in the police service four years.



WANTS GERMAN TO PAY IN FULL. M. Boland, French premier, who has made this clear to the Chamber of Deputies in the declaration of his ministry.



MISS ANNA BETTENDORF, 1347 North Palethorp street Philadelphia, Pa.