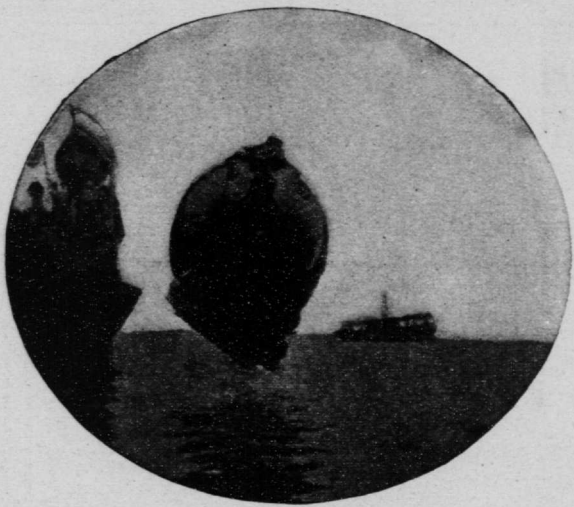
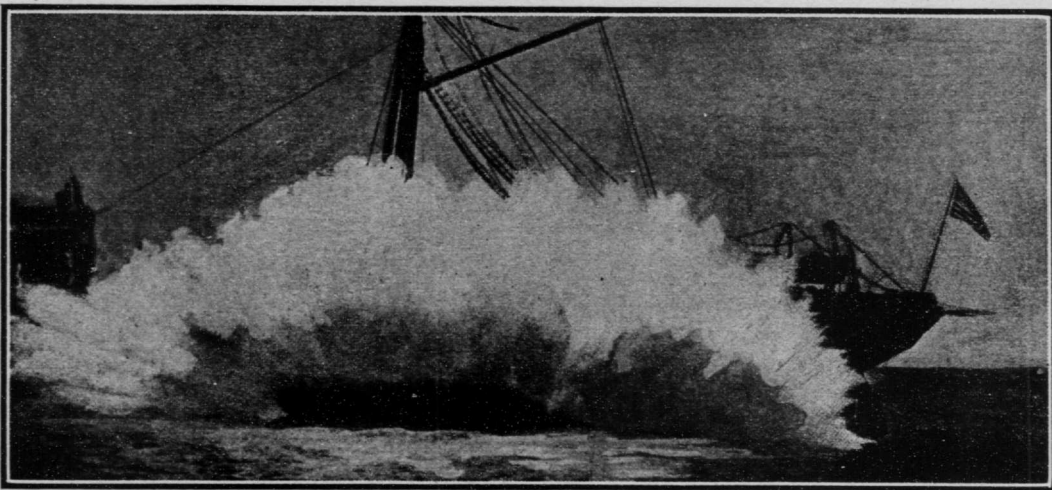


QUAINT AND CURIOUS



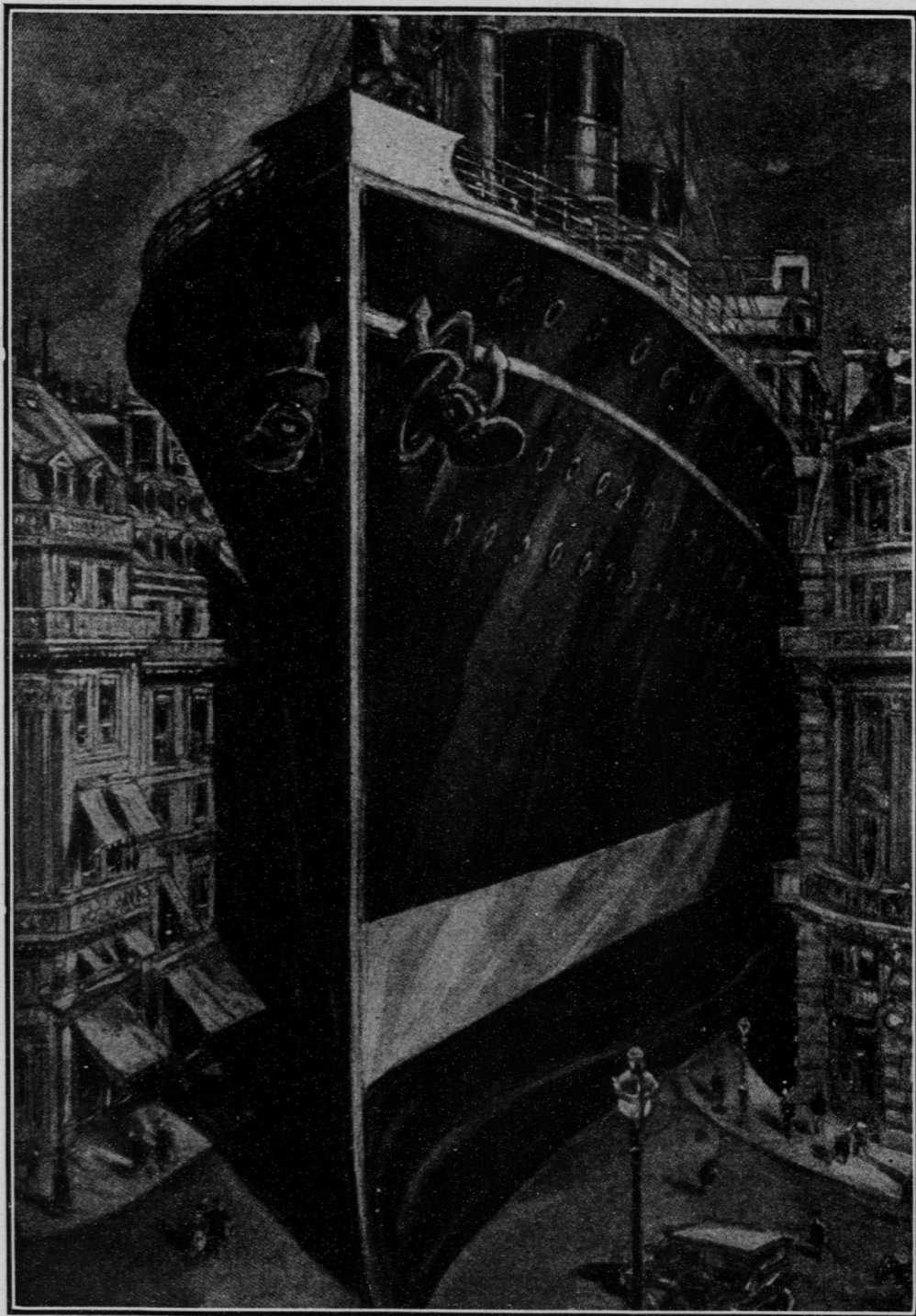
THE SUBMARINE IN MIDAIR.



THE SPLASH WHEN THE SUBMARINE STRUCK THE WATER.

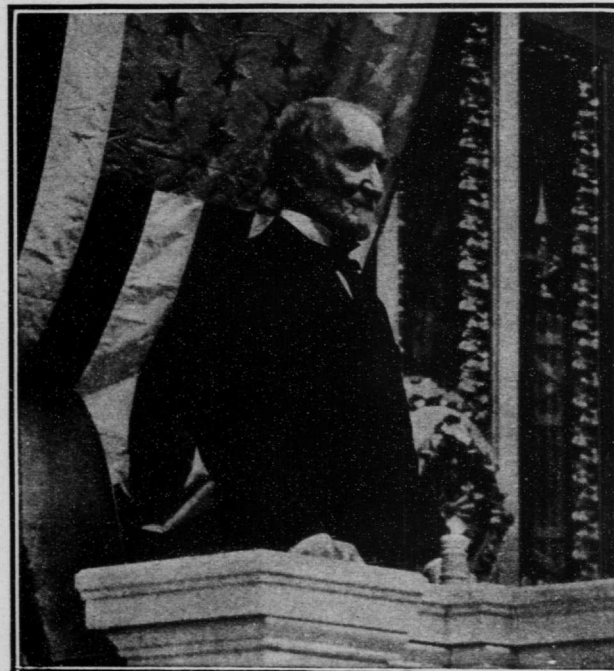
AN UNCEREMONIOUS WAY OF TREATING A SUBMARINE

AN ENGLISH SUBMARINE WAS RECENTLY SHIPPED TO THE FAR EAST ON THE DECK OF A COLLIER. WHEN IT REACHED PORT THERE WAS NO MACHINERY CAPABLE OF UNLOADING THE BOAT, AND SO IT WAS LITERALLY PUSHED OFF THE DECK OF THE BIG VESSEL.



THE BIGNESS OF AN ATLANTIC LINER

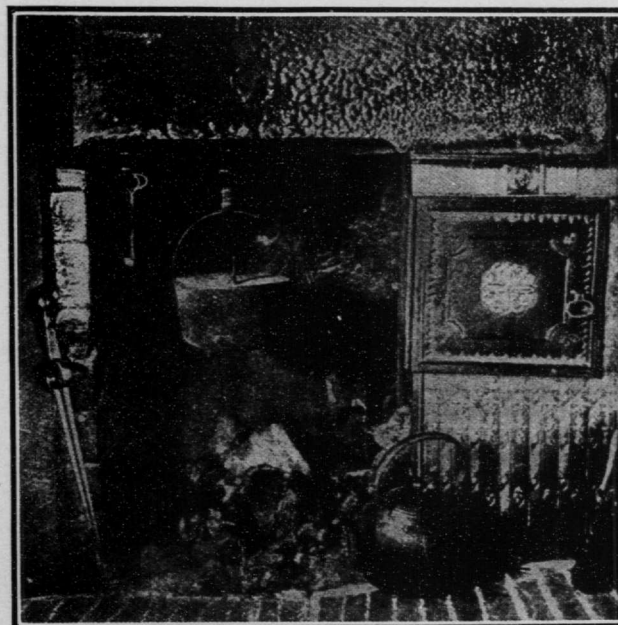
IF ONE OF THE GIANTS OF THE OCEAN WERE RUN ASHORE, LANDING FINALLY IN ONE OF THE CROSS STREETS, IT WOULD BARELY FIT INTO EIGHTEENTH STREET, BETWEEN FIFTH AND SIXTH AVENUES. THE PICTURE (FROM THE SKETCH) IS FROM A DRAWING MADE TO SCALE, AND GIVES A PRETTY ADEQUATE IDEA OF THE RELATIVE PROPORTIONS OF SHIP AND BUILDINGS.



A SNAPSHOT OF SPEAKER CANNON

THE VETERAN LEADER OF THE HOUSE OPENING THE SECOND SESSION OF THE SIXTIETH CONGRESS.

Copyright, 1908, by Clineinst.



FIRE THAT IS TWO CENTURIES OLD

IN THE LITTLE OLD CHEQUERS INN, YORKSHIRE, A FIRE HAS BEEN BURNING IN THE HEARTHPLACE THAT WAS FIRST LIGHTED IN THE OLD COACHING DAYS, OVER TWO HUNDRED YEARS AGO. SOME COOKING IS STILL DONE OVER THE FLAMES, THE FUEL BEING PEAT.