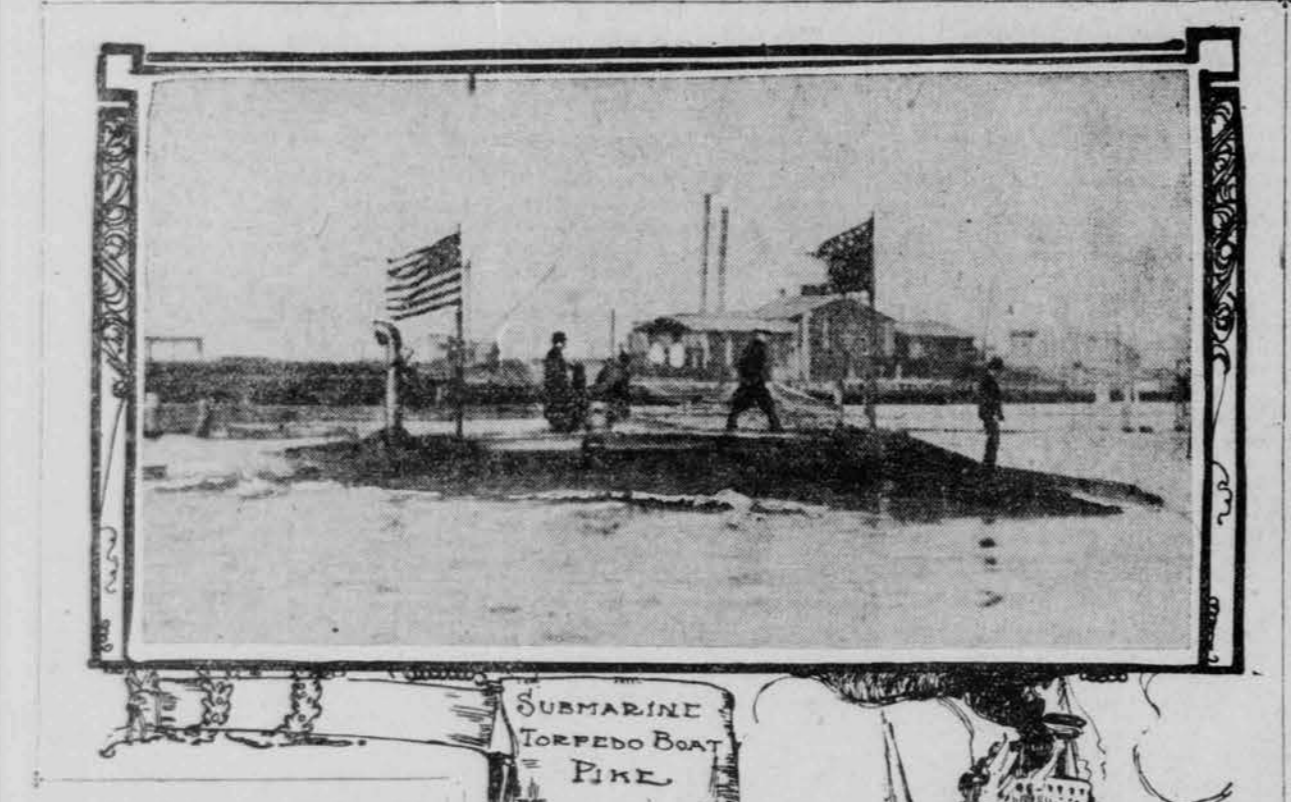


HOLLAND SUBMARINE TORPEO BOAT LAUNCHED AT UNION IRON WORKS

Christened Pike by the Wife of Naval Constructor Zahm--The Little Sea Terror Takes to the Water Like a Tame Duck and Will Be Ready for Service Soon--Duplicate of Grampus and Has Fifteen Fighting Sisters



The submarine torpedo-boat Pike was launched yesterday morning at the Union Iron Works. The introduction of the Pike to the element whose depths she is built to navigate was scheduled for 11:25 a. m. and promptly to the minute Marley F. Hay, the representative here of the builders, gave the signal that started the marine sliding down the ways and into the water.

After the launching the Relief took the guests, who were nearly all navy folk, for an extended cruise around the bay. Launching was served on board and the launching party landed at the Oceanic docks shortly before 2 o'clock.

The Pike is an exact duplicate of the Grampus, launched from adjoining stocks last July, and is one of six submarine boats constructed by the Holland Torpedo-boat Company for the United States navy. The Pike has ten sisters in the British navy and it is expected that the present Congress will appropriate money for another half dozen of the family for the American navy.

The Grampus, which was given a preliminary surface trial a month or so ago, will be ready in about two weeks for her submarine trial and two weeks after that the Pike is expected to be in shape to show what she can do under the water.

The guests of the Holland Torpedo-boat Company at yesterday's launching were: Naval Constructor Frank B. Zahm, U. S. N., and Mrs. Zahm; Naval Constructor L. S. Adams, U. S. N., and Mrs. Adams; Mr. and Mrs. S. Adams; Mr. and Mrs. C. B. Brinegar; Paymaster H. G. Colby, U. S. N.; George A. Dredge, Lieutenant George W. Danforth, U. S. N.; and Mrs. Danforth; Captain Albert F. Elson, U. S. N.; and Mrs. Elson; Mr. and Mrs. George Fredericks, Mr. and Mrs. Marley F. Hay, Mr. and Mrs. W. Kimball, Mr. and Mrs. James Kimball, Miss Dute, Lincoln, Mrs. F. Crawford, Mrs. Frank D. Mitchell, Miss Alma Mitchell, Commander John B. Milton, U. S. N., and Mrs. Milton; Miss Mattie Milton, Mrs. Henry T. May, Chester May, Jr., and Mrs. May; Captain R. H. McKalla, U. S. N.; Newell; Captain H. N. Stevenson, U. S. N.; Mr. and Mrs. John Scott; Prescott Scott, Miss Rose Standart; Mrs. Standart; Captain J. W. Taylor, U. S. N.; and Mrs. Taylor; Mr. and Mrs. Joseph Trillier, U. S. N.; retired; and Mrs. Trillier; Mr. and Mrs. Hoffmann, L. Van Winkle; Miss Lottie Woods.

Released From Quarantine. The steamship Newport, which arrived from Panama late Tuesday afternoon, and was placed in quarantine, was released yesterday morning and landed her passengers at the Pacific Mail dock. She brought twenty-six passengers, 1000 tons of cargo and treasure valued at \$3000,000, and a number of the officers and crew who left here on the Colombian gunboat Bogota. They left here expecting to find glory.

Shipping Intelligence. ARRIVED. Wednesday, January 14. Stmr Navarro, Webster, 12 hours from Havana Landing. Stmr Santa Monica, Olsen, 60 hours from San Francisco. Stmr Phoenix, Odland, 15 hours from Mendocino. Stmr Mandalay, Batchelder, 36 hours from Crescent City. Stmr National City, Johnson, 16 hours from Port Brunsford. Stmr Hamilton, Olsen, 50 hours from Newport. Stmr Gonzales, Olsen, 10 hours from Bihlers Point. Stmr Star Algon, Hanford, 90 hours from Comox, Oakland district. Stmr Elm Harbor, Hill, 25 days from Port Brunsford. Stmr Gloria of the Seas, Pindling, 11 days from Comox. Stmr Stevedore, Sloane, 14 days from Port Headlock. Stmr Fannie Adele, Anderson, 15 days from Comox. Stmr Ocean Spray, Ellingsen, 10 days from Comox. CLEARED. Wednesday, January 14. Stmr State of California, Thomas, San Diego, Pacific Coast Steamship Co. Ger ship Hietel, Leopold, Queenstown; Belfast, Guthrie & Co. SAILED. Wednesday, January 14. Stmr Eureka, Jensen, Eureka. Stmr Centralia, Erickson, Grays Harbor.

Advertisement for Stomach Bitters, featuring an illustration of a man and text describing its benefits for various ailments like biliousness, nervousness, and indigestion.

PARALLEL VENUE

Failure of Brokers Will Prove Cause of Much Litigation.

Receiver of Schumacher & Co. Brings Suit for Large Amount.

If the allegations contained in the four suits filed by Louis O. Levinson, the recently appointed receiver of the bankrupt jewelry firm of Schumacher & Co., are true a peculiar condition of affairs has come to light which will no doubt be bitterly fought in the courts.

The suits are against the Western National Bank, Judah Boas, O. B. Martin and H. Abrams & Co., and the allegations in each case are substantially the same, with the exception of the amounts sued for. The plaintiff sets forth in the complaints that the respective defendants are in possession of jewelry amounting to considerable sums which it is alleged they obtained upon loans from the firm of Schumacher & Co. for money advanced.

Do You Want a Trunk? At a moderate price? One that looks good and is good, or a dress suit case, valise or traveling bag? We have them all in best material and at lowest prices.

THURSDAY, JANUARY 15. Sun rises 7:24. Sun sets 5:14. Moon rises 8:06 p. m.

Table of tide information for Thursday, January 15, showing high and low tide times for various locations like San Francisco, Sausalito, and Tiburon.

Movements of Steamers.

Table listing steamers to arrive and to sail, including ship names, destinations, and departure times.

NEWS OF THE OCEAN. Grain for Europe. The German ship Rigel was cleared yesterday for Queenstown, for orders, with 52,769 cts barley, valued at \$63,320, and 13,510 cts wheat, valued at \$17,565. The vessel carried 24,000 lb lumber as damage, valued at \$300.

Notice to Mariners. STRAITS OF JUAN DE FUCA, WASHINGTON. Notice is hereby given that Point Wilson buoy No. 6, a first-class nun, is reported missing and the position of the buoy is as follows: This notice affects the List of Beacons and Buoys, Pacific Coast, 1902, page 75.

Shipping Intelligence. ARRIVED. Wednesday, January 14. Stmr Navarro, Webster, 12 hours from Havana Landing. Stmr Santa Monica, Olsen, 60 hours from San Francisco.

Time Ball. Branch Hydrographic Office, U. S. N., Merchantry Exchange, San Francisco, Cal., January 14, 1903. The Time Ball on the tower of the Ferry Building was dropped exactly at noon to-day, i. e., at the point of the 12th meridian, or at 8 a. m., Greenwich time.

FREE IN COLOR

With NEXT SUNDAY'S CALL Given Away With The SAN FRANCISCO -C-A-L-L-

By Oscar Holliday Banghart. The illustration shows a man in a suit holding a large fish, with a woman looking on. The scene is set outdoors near a body of water.



"CUPID BAITS THE HOOK." NEXT WEEK'S SELECTION, entitled "Cupid Bait the Hook," an up-to-date creation artistically drawn, is certain to attract every one.

The San Francisco Call Limited.. To CHICAGO Daily

California Limited.. To CHICAGO Daily. An Ideal Train For Those Who Seek the Best.

Table of California Limited train schedule, showing departure and arrival times for various routes including San Francisco to Chicago.

TOYO KISEN KAISHA. (ORIENTAL STEAMSHIP CO.) Steamers will leave wharf, corner First and Brannan streets, at 1 p. m., for YOKOHAMA and HONGKONG, calling at Kobe, Yokohama, and Shanghai, and connecting at Hongkong with steamers for India, etc.

Table of Toyo Kisen Kaisha steamship schedule, listing ship names, destinations, and departure times.

RAILWAY TRAVEL. SOUTHERN PACIFIC. Trains leave market street for various destinations including Sacramento, Colusa, and Marysville.

Table of Oakland Harbor Ferry schedule, showing departure and arrival times for various routes.

Table of Coast Line (Broad Gauge) schedule, showing departure and arrival times for various routes.

Table of California Northwestern Ry. Co. Lessees schedule, showing departure and arrival times for various routes.

Table of Santa Fe Trains schedule, showing departure and arrival times for various routes.

Table of North Shore Railroad schedule, showing departure and arrival times for various routes.

Table of Mount Tamalpais Railway schedule, showing departure and arrival times for various routes.