



**GENERAL INFORMATION**

LENGTH BETWEEN PERPENDICULARS ----- 600'-0"  
 LENGTH OVERALL ----- 623'-10"  
 BREADTH EXTREME TO OUTSIDE OF FLT. OF 40" GUN PLAT. PORT & STACK STOO. 109'-2 3/8"  
 DRAFT ABOVE BOTTOM OF KEEL AT TRIAL DISPLACEMENT OF 13,185 TONS ----- 22'-6"  
 MOLDED BASELINE ABOVE BOTTOM OF KEEL ----- 0'-1 1/16"

**PROPELLERS**

CENTER OF SCREW FORD OF A.P. ----- 52'-0" & 104'-0"  
 1/4 OF STRUT BEARING FORD OF A.P. ----- 57'-4 1/4" & 98'-0 3/4"  
 1/4 OF RUDDER STOCK FORD OF A.P. ----- 32'-0"

**HEIGHTS ABOVE MLD. BASELINE**

24" SEARCHLIGHT-2 ----- 100'-4 3/4"  
 12" SIGNAL SEARCHLIGHT-2 ----- 87'-5 3/4" & 93'-11 1/4"  
 FLIGHT DECK ----- FR12-67'-5 3/8" - FR150-69'-3 3/8"  
 NAV. BRIDGE ----- 74'-10 3/4"  
 AIR DEFENSE LEVEL ----- 81'-10 3/4"

**FIRE PLUGS**

LOCATION	NO.	LOCATION	NO.
FORECASTLE DECK	1	MAIN DECK	4
GALLERY DECK	13	2ND. DECK	13
POOP DECK	3	3RD. DECK	9
HANGAR DECK	6	1ST. PLATFORM & BELOW	9
		<b>TOTAL NO OF PLUGS</b>	<b>58</b>

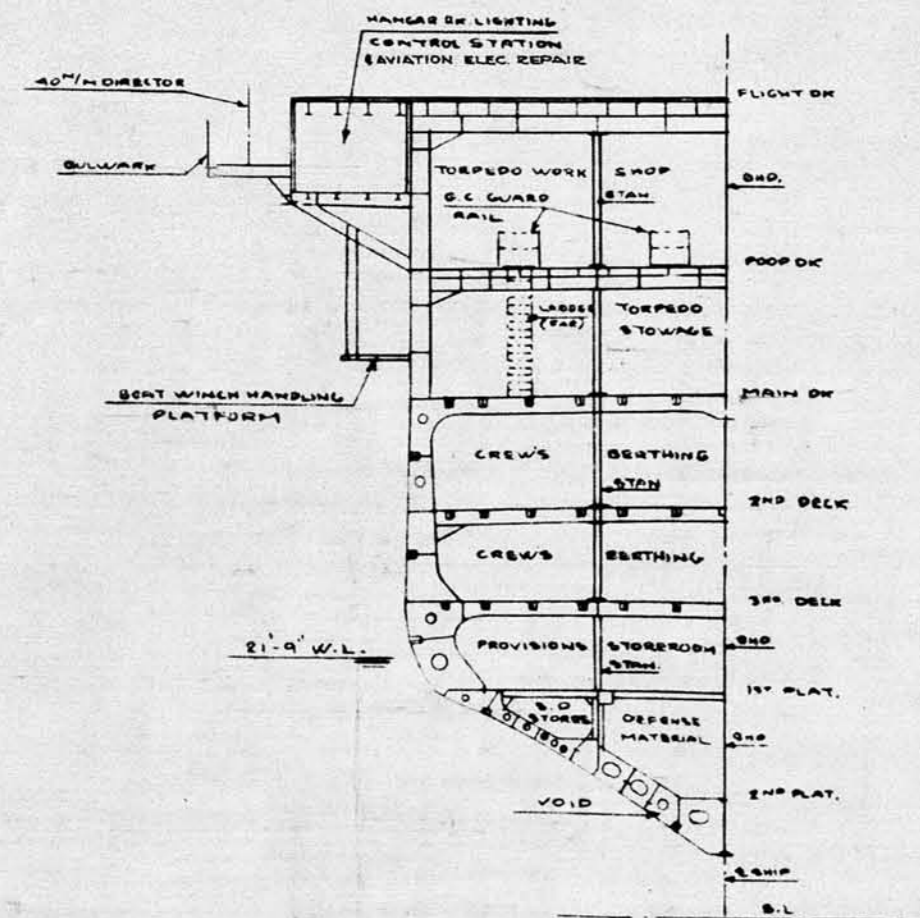
**HEIGHTS ABOVE MLD. BASELINE (CON'T)**

TRUCK LIGHT ----- (ACTUAL) -----	138'-0 5/8"
RANGE LIGHT -----	126'-0 7/8"
MASTHEAD LIGHT -----	110'-10 1/4"
SIDE LIGHTS -----	65'-4 1/4"
ANCHOR LIGHT FWD -----	71'-1"
ANCHOR LIGHT AFT -----	66'-2"
SCREENED SPEED LIGHT -----	64'-15/8"
WHITE STERN LIGHT -----	48'-10 3/8"
BLUE STERN LIGHT -----	47'-4 1/4"
WAKE LIGHT -----	45'-3 3/8"
STEERING LIGHT -----	78'-5 1/8"
TOP OF 'YE' ANTENNA (ABOUT) -----	142'-8"
TOP OF 'SK' RADAR ANTENNA (DESIGNED) -----	100'-0"

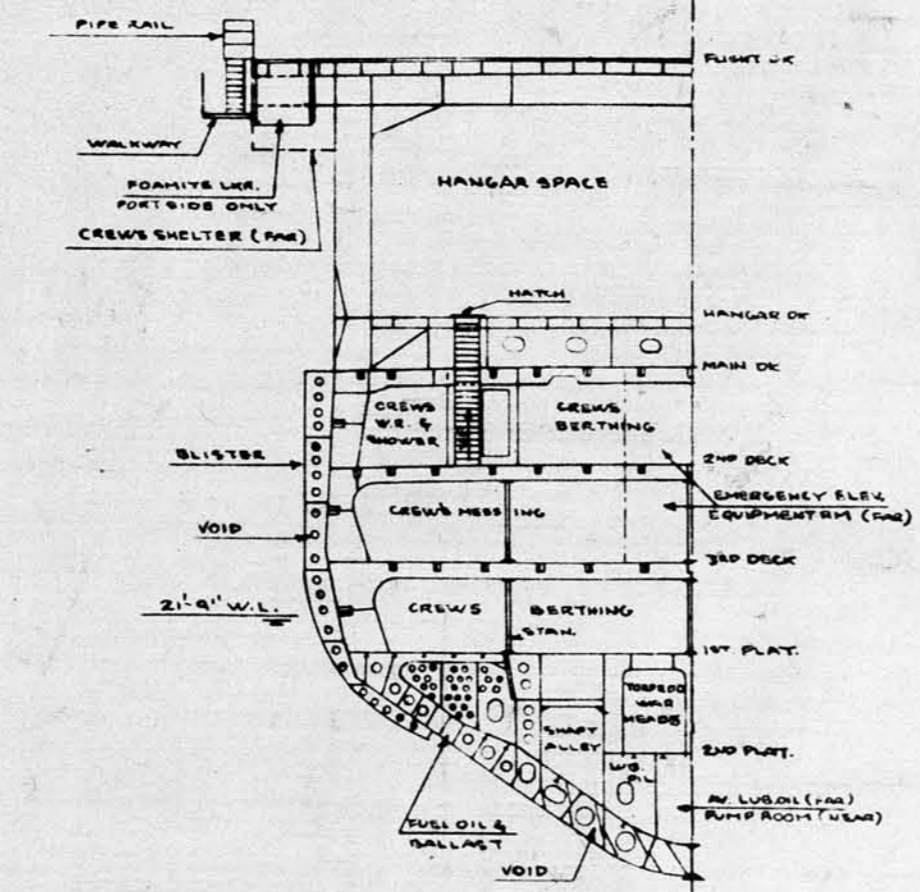
NO	ACCOMMODATIONS	GRAND TOTAL
1	CAPTAIN	1566
70	WARDROOM OFFICERS	
14	WARRANT OFFICERS	
52	C. P. O.	
1429	CREW	

**SMALL BOATS**

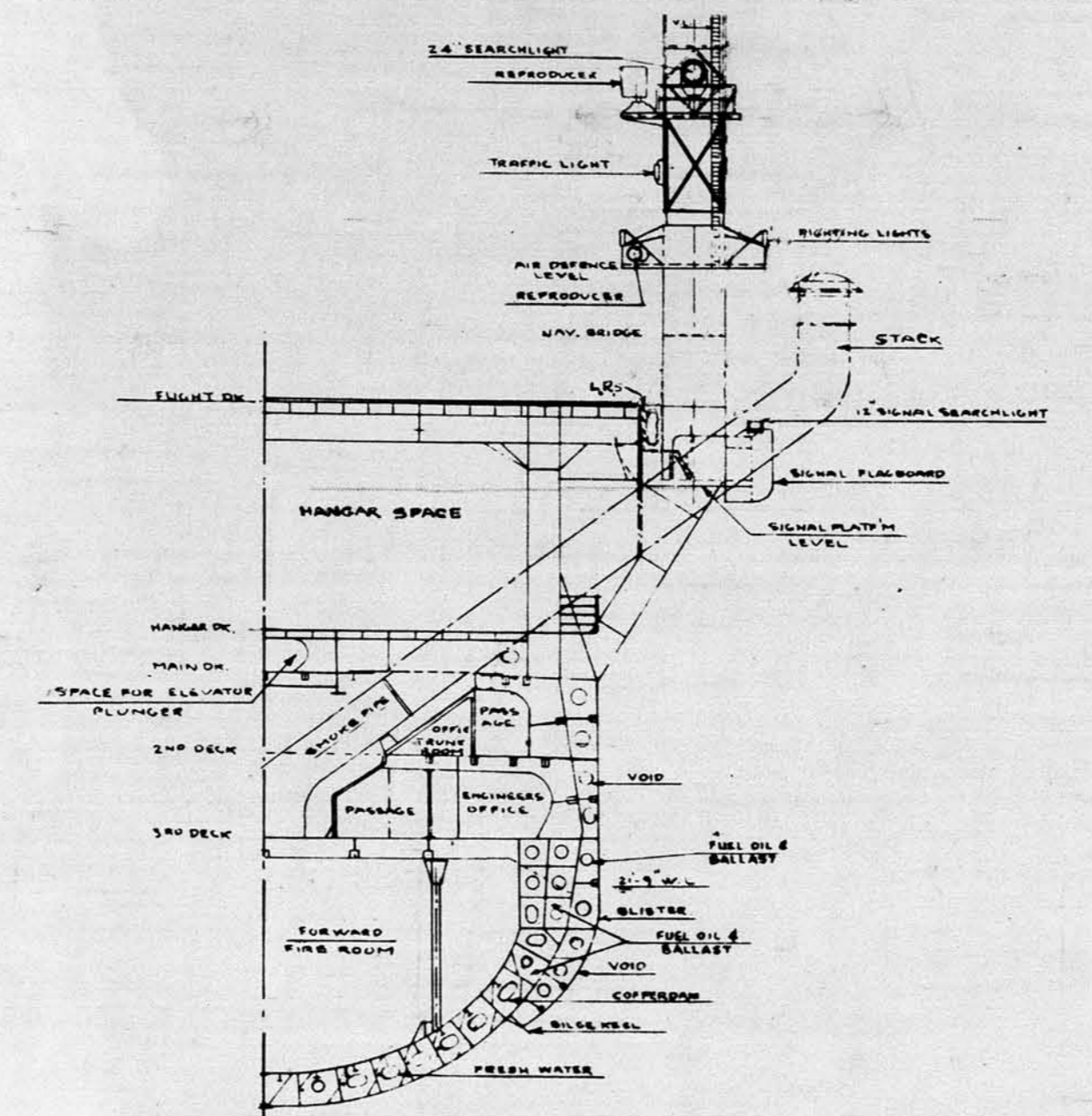
NR	DESCRIPTION	MEN	
		EACH	TOTAL
2	26 FT. MOTOR WHALE BOATS -----	22	44
2	35 FT. MOTOR BOATS	27	54
2	36 FT. MOTOR LAUNCHES	70	140



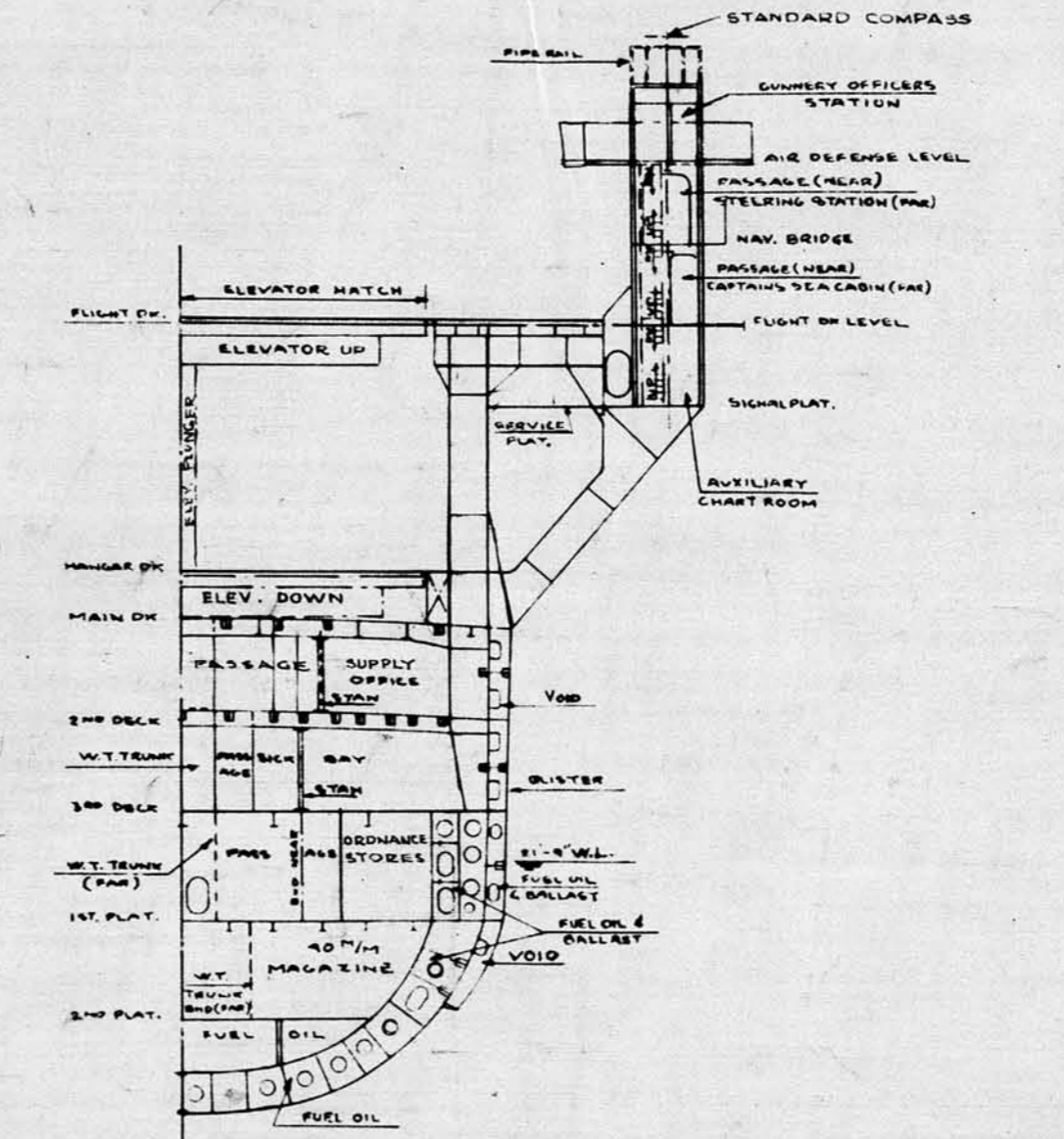
FR 127 ABV 1ST PLAT'M  
FR 128 1/2 BEL 1ST PLAT'M  
LOOKING AFT.



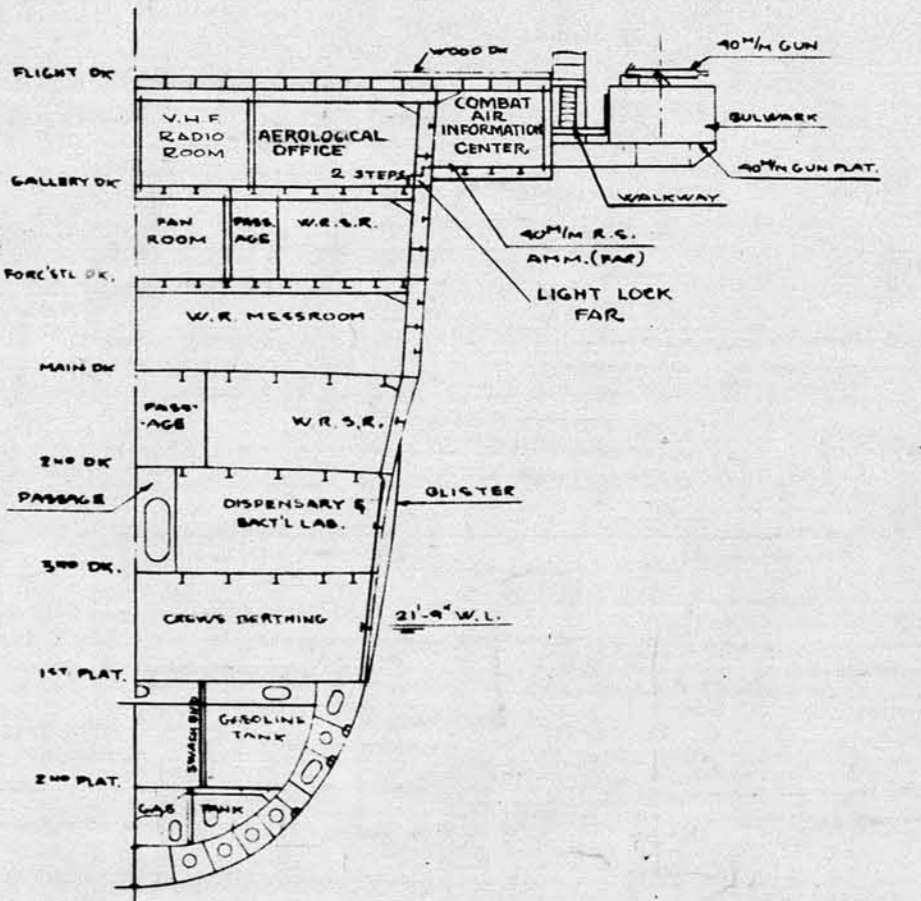
FR 109  
LOOKING AFT



FR 62 BEL MAIN DK.  
FR 59 ABV MAIN DK.  
LOOKING FORD



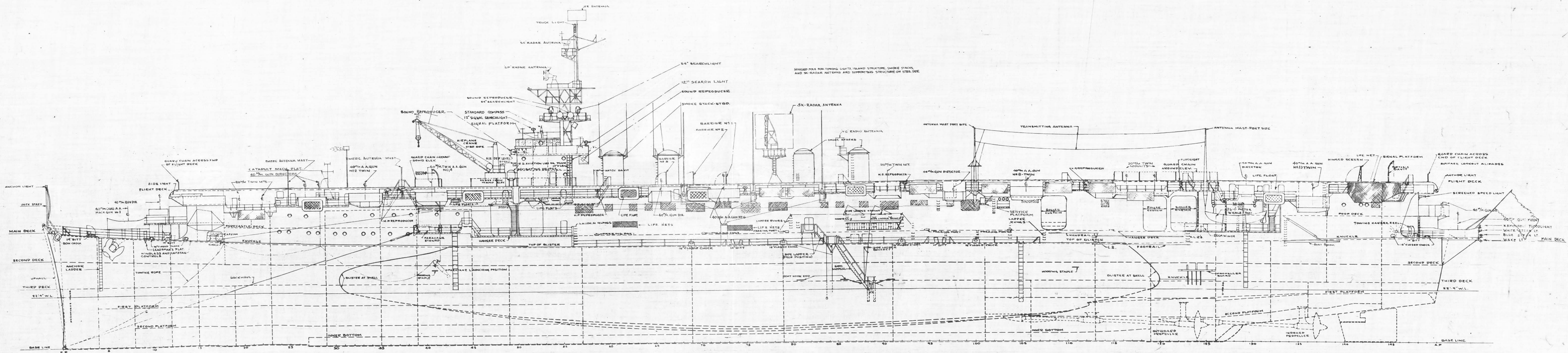
FR 52 BEL 3RD DK.  
FR 53 ABV 3RD DK.  
LOOKING FORD



FR 37  
LOOKING FORD

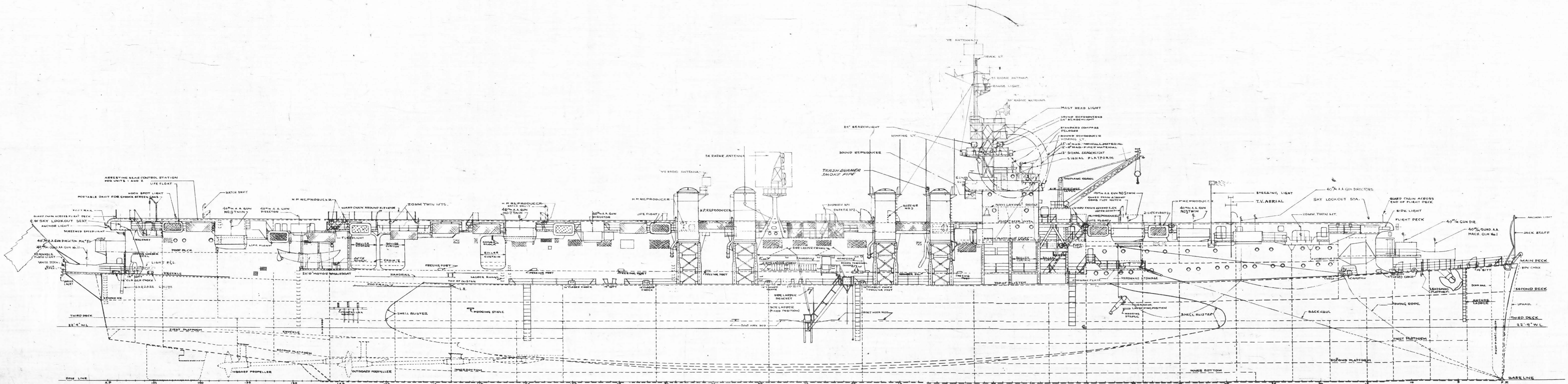
**ABBREVIATIONS**

- CA. --- CALIBER
- ABV. --- ABOVE
- BL. --- BASELINE
- WL. --- WATERLINE
- A.P. --- AFTER PERPENDICULAR
- F.P. --- FORWARD PERPENDICULAR
- L.R. --- LADDER RUNG
- A.A. --- ANTI-AIRCRAFT

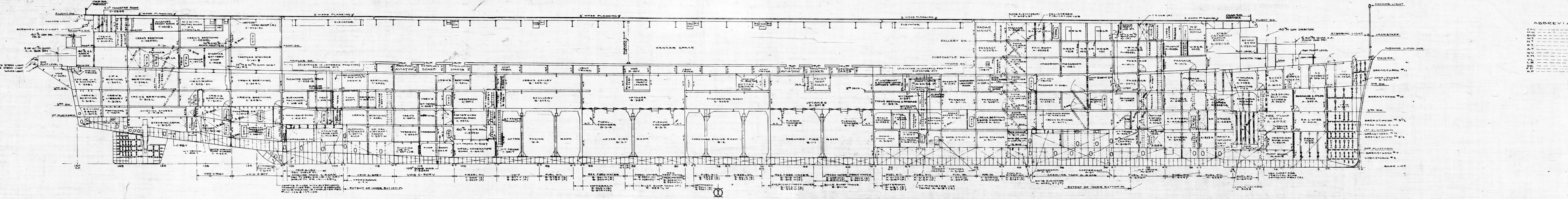


CVL 26  
**OUTBOARD PROFILE (PORT)**  
 SCALE 1/8" = 1 FOOT  
 BU. OF SHIPS NO. 46123

ABBREVIATIONS  
 CAL ----- CALIBER  
 ABV ----- ABOVE  
 BL ----- BASELINE  
 WL ----- WATERLINE  
 AP ----- AFTER PERPENDICULAR  
 FP ----- FORWARD PERPENDICULAR  
 LP ----- LADDER RUNG  
 AA ----- ANTI-AIRCRAFT



CVL 26  
 OUTBOARD PROFILE (STBD)  
 SCALE 1/4" = 1 FOOT  
 BU. OF SHIPS NO 461234



ABBREVIATIONS

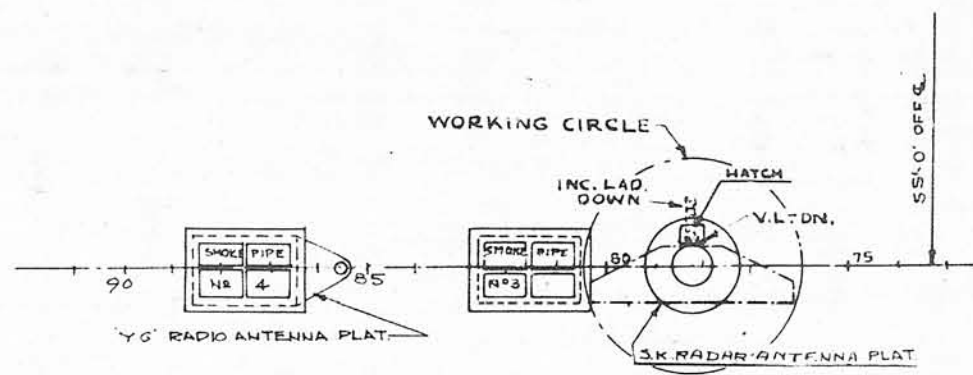
CAL	-----	CALIBER
MH	-----	MANHOLE
BH	-----	BULKHEAD
WT	-----	WATER TIGHT
NT	-----	NON TIGHT
OT	-----	OIL TIGHT
AT	-----	AIR TIGHT
WU	-----	WIRE UNIT
EM	-----	EXPANDED METAL
VL	-----	VERTICAL LADDER
LR	-----	LADDER RUNG
DK	-----	DECK
FP	-----	FORWARD PERPENDICULAR
AP	-----	AFTER PERPENDICULAR

CUL 26  
INBOARD PROFILE

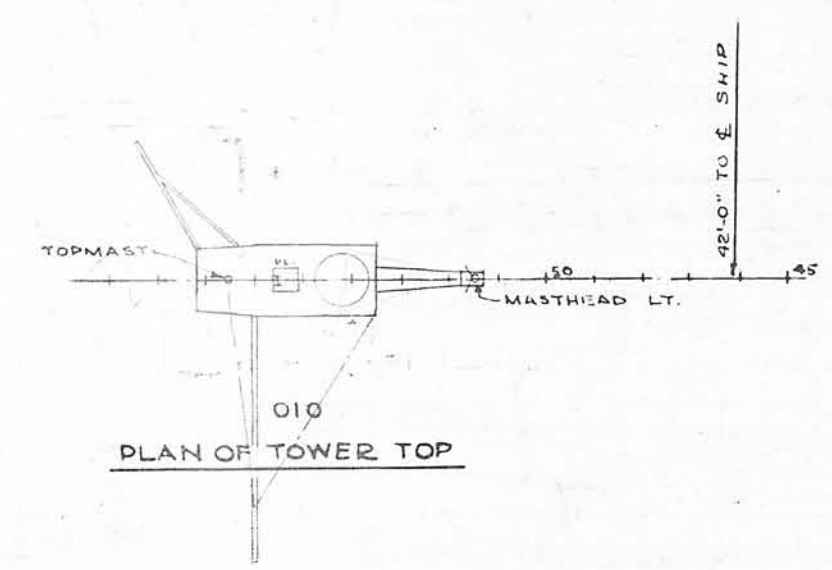
SCALE 1/16" = 1 FOOT  
BUOY SHIP NO. 46123A

ABBREVIATIONS

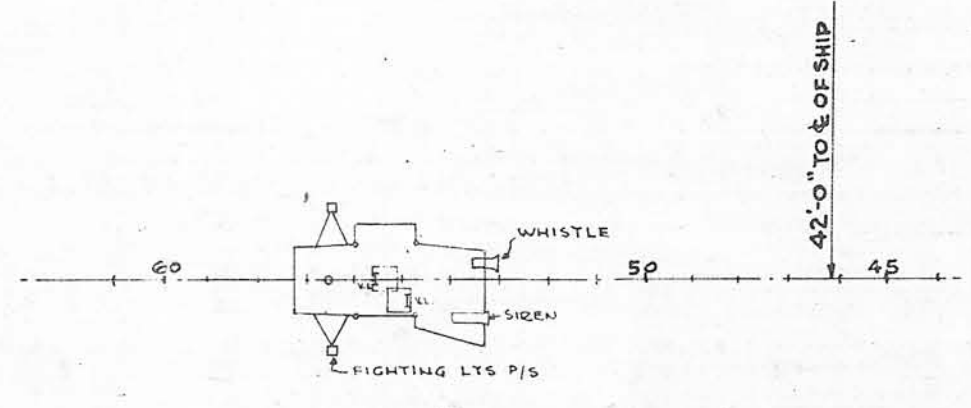
- P/S POST AND STAREBOARD
- WT WING TRUNK
- L R<sub>6</sub> LADDER RUNGS



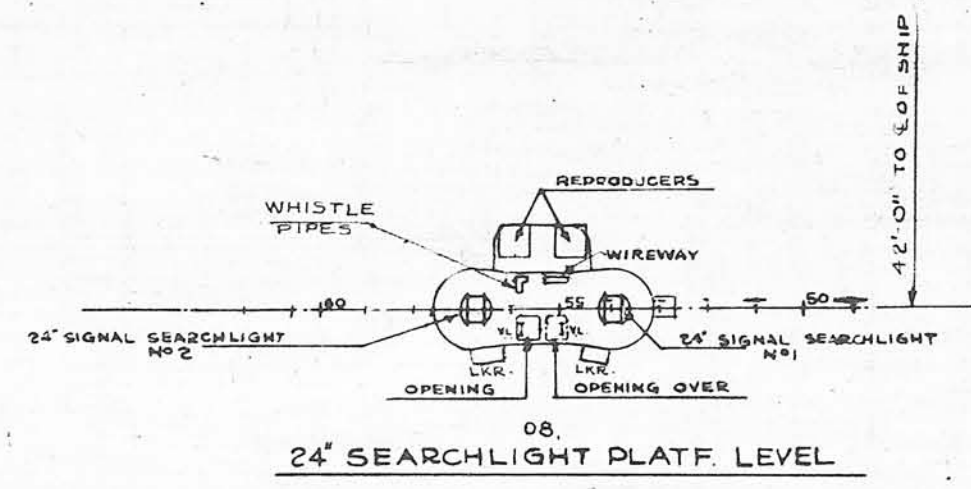
PLAN OF SMOKE PIPES No 3 & 4



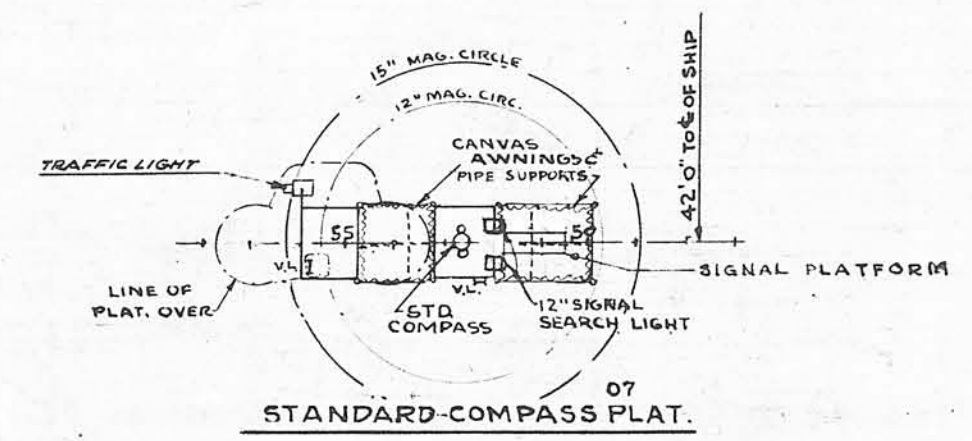
PLAN OF TOWER TOP



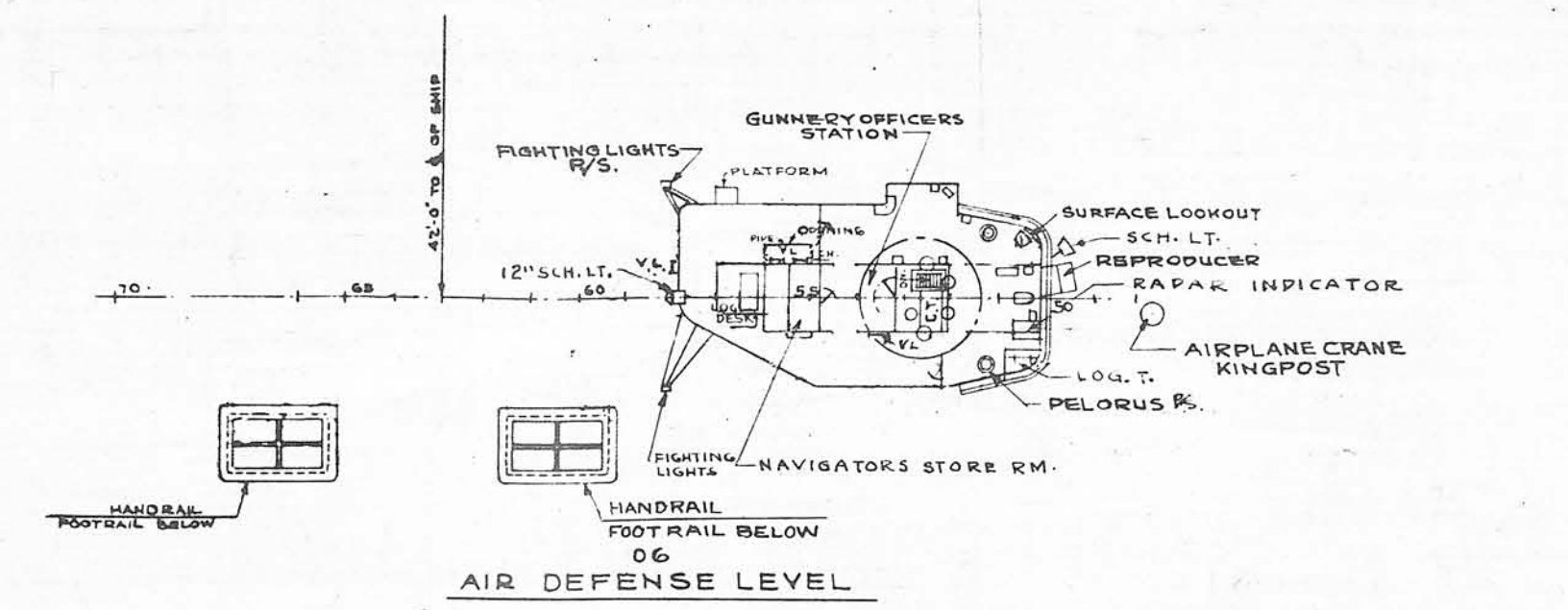
PLAN OF PLATFORM & DIAGONAL BRACING



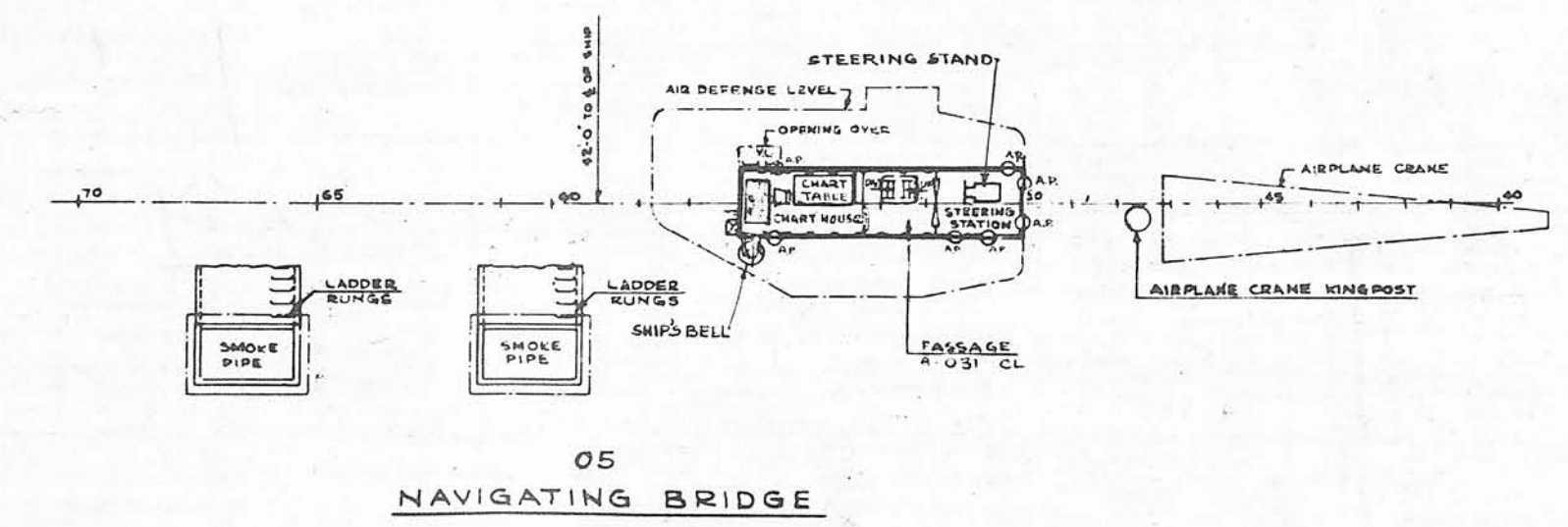
24' SEARCHLIGHT PLAT. LEVEL



STANDARD-COMPASS PLAT.



AIR DEFENSE LEVEL



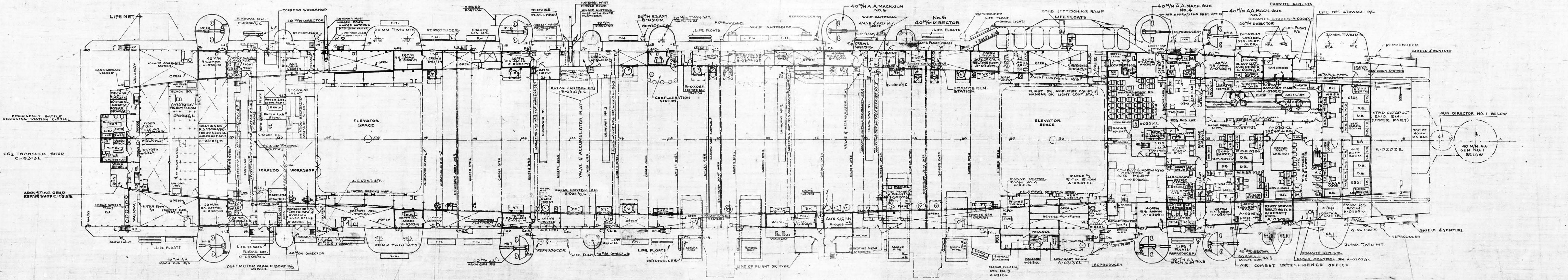
NAVIGATING BRIDGE





ABBREVIATIONS

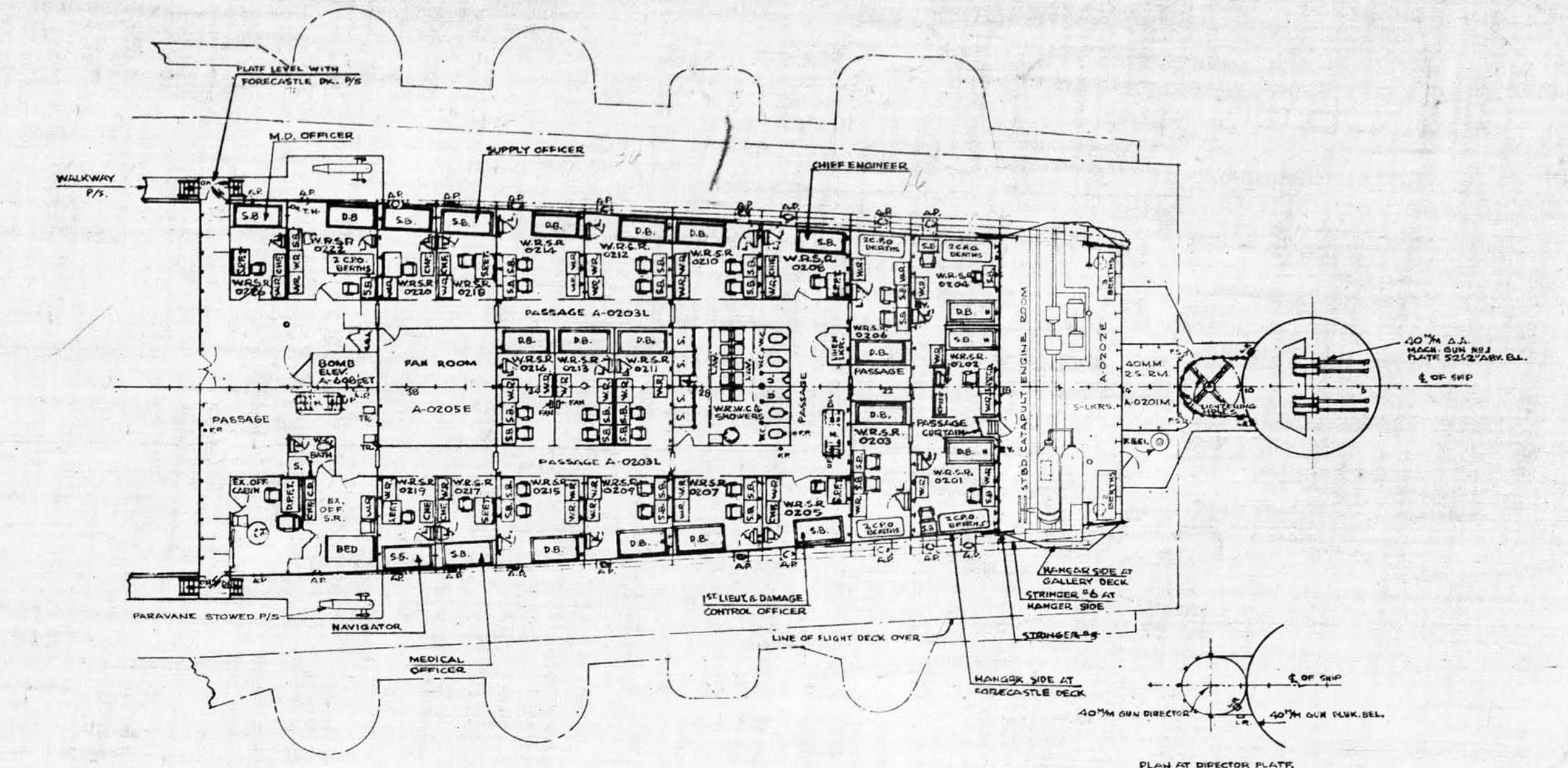
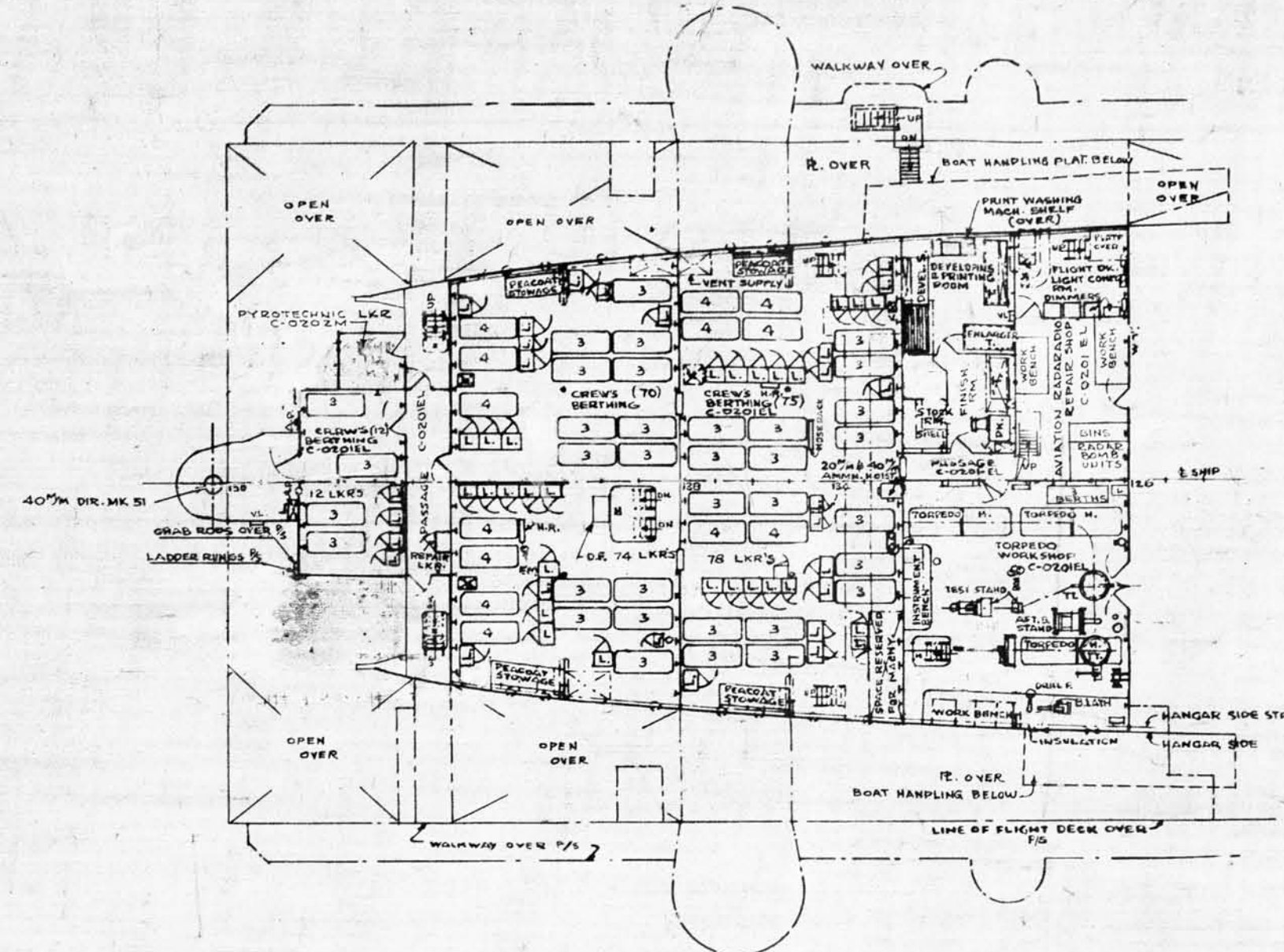
- ENG. TRANS. TEL IND ENGINE TRANSMITTER TELEGRAPH INDICATOR
- TEL TRANS RUD IND TELEGRAPH TRANSMITTER RUDDER INDICATOR
- S.B SINGLE BERTH
- WR-S.R WARDROOM STATEROOM
- WR WASHROOM
- DB DOUBLE BERTH
- SEC. CONN. STATION SECONDARY CONNING STATION
- GEN GENERATOR
- CONT CONTROL
- V.M.C VENTILATION MOTOR CONTROL
- T.S TRANSFER SWITCH
- P.P POWER PANEL
- L. LAVATORY
- SH. SHOWER
- U URINAL
- WC WATER CLOSET
- S.P.T.W SINGLE PEDESTAL TYPEWRITER
- S.P.T SINGLE PEDESTAL FLAT TOP
- F.C. FILING CABINET
- S.L. SAFE LOCKER
- REG PUB LKR REGISTERED PUBLICATION LOCKER
- S STOOL
- COND CONDENSER
- A.P.S. AMMUNITION PASSING SCUTTLE
- R.S. READY SERVICE
- M/M MILLIMETER
- A.H. ACCESS HOLE
- AUX. AUXILIARY
- P.B.D. PLOTTING BOARD
- R.O. RADIO OPERATOR
- F.C.B.L. FILM CABINET & LOCKER
- P.H.O. PHONOGRAPH
- R.V. RELIEF VALVE
- ACC. ACCUMULATOR
- V.L. VERTICAL LADDER
- MACH. MACHINE
- V.T. VENT
- V.T. VENTILATION TRUNK
- R.O.T. PORTABLE OPERATING TABLE
- F.W.T.O. FRESH WATER TANK OVER
- EMERG. EMERGENCY
- L.K.R. LOCKER
- H. HATCH
- M.R. HOSE RACK
- P/S. PORT AND STARBOARD
- D.N. DOWN
- A.A. ANTI-AIRCRAFT
- M.M. MIMEOGRAPH
- F.N. FLOATER NET



CVL 26  
 GALLERY DECK & WALKWAYS  
 SCALE = 1/16" = 1'-0"  
 BU. OF SHIPS No 461234

ABBREVIATIONS

- ADV. ABOVE
- A.P. AIRPORT
- C.D. CHEST OF DRAWERS
- C.S.L. CLEANING GEAR LOCKER
- CHP. CHIFFONIER
- C. CENTER LINE
- C.T. CARD TABLE
- D.B. DOUBLE BERTH
- DN. DOWN
- D.P.F.T. DOUBLE PEDESTAL FLAT TOP
- D.T.C. DOUBLE TOILET CASE
- EX.OFF. EXECUTIVE OFFICER
- H. HATCH
- H. HEAD
- H.F.W. HOT FRESH WATER
- LAV. LAVATORY
- L.P. LIGHTING PANEL
- PLATF. PLATFORM
- P/S. PORT AND STARBOARD
- S.S. SINGLE BERTH
- S.B. SINGLE BERTH
- S.P.F.T. SINGLE PEDESTAL FLAT TOP
- S.S. SLOP SINK
- S.T.C. SINGLE TOILET CASE
- TR. TRANSFORMER
- U. URINAL
- W.C. WATER CLOSET
- W.R. WARDROBE
- W.R.S.R. WARDROOM WATERROOM
- W.R.W.C. WARDROOM WATER CLOSET
- V. VENT
- DK. DECK
- DK. DECK
- V.M.C. VENT MOTOR CONTROL
- D.F. DRINKING FOUNTAIN
- LKR. OR L. LOCKER
- MACH. MACHINE
- L.P. LIGHTING PANEL
- P.P. POWER PANEL
- T. TABLE
- S. SHOWER OR SINK
- TT. TURNABLE
- P. PRESS
- VL. VERTICAL LADDER



PLAN AT DIRECTOR PLATE, 57'2" ADV. & TO TOP OF PLATF. (LEVEL)

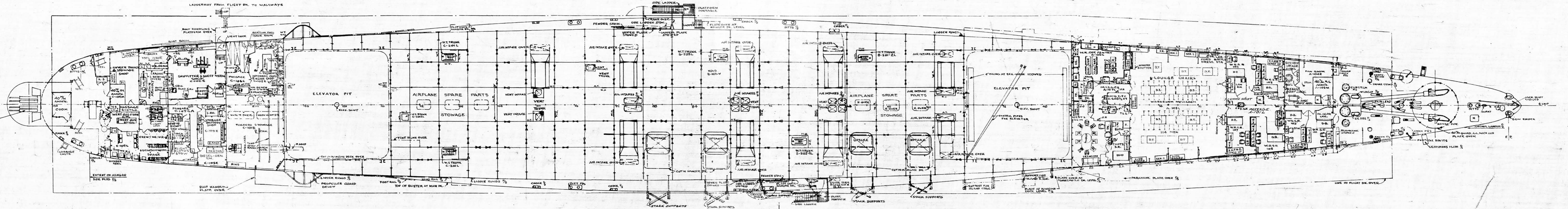


ABBREVIATIONS

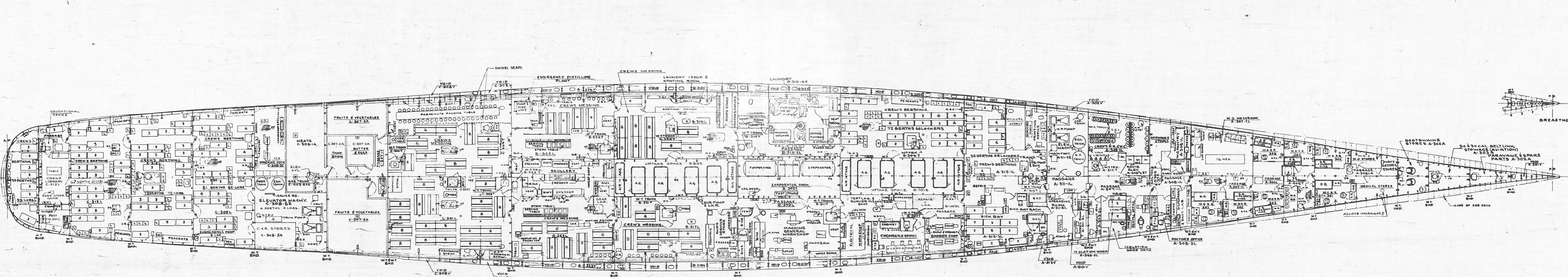
- A.H. ACCESS HOLE
- AMMN. AMMUNITION
- A.P. AIR PORT
- BKCASE. BOOKCASE
- BL. BASE LINE
- CAL. CALIBRE
- CAPT. CAPTAIN
- CLEAN. CLEANING
- CHIFF. CHIFFONIER
- CONT. CONTROL
- D. DOOR
- DB. DOUBLE BERTH
- DF. DRINKING FOUNTAIN
- DK. DECK, DESK
- DR. DRESSER
- DK DR. DECK DRAIN
- DN. DOWN
- D.T.C. DOUBLE TOILET CASE
- ELEV. ELEVATOR
- ENG. ENGINE
- E.S. ESCAPE SCUTTLE
- H. HEAD
- H.W. HATCH OVER
- H.O. HANDL. HANDLING
- LAV. LAVATORY
- LKR. OR L. LOCKER
- MACH. MACHINE
- OUTL. OUTLET
- PLAT. PLATFORM
- P/S. PORT AND STARBOARD
- R. REFRIG. REFRIGERATOR
- RM. ROOM
- S.B. SECRETARY BUREAU
- SERV. SERVICE
- S.L. SAFE LOCKER
- STOW. STOWED
- S.R. STATEROOM
- STOD. STARBOARD
- STRUCT. STRUCTURE
- TERM. TERMINAL
- T.L.L. TABLE LEAF LOCKER
- TRANSF. TRANSFER
- TYP. TYPE
- VENT. OR V. VENTILATION
- V.L. VERTICAL LADDER
- W.R. WARDROBE
- W.R.S.R. WARDROBE STATEROOM
- A.P. AFTER PERPENDICULAR
- F.P. FORWARD PERPENDICULAR
- W.T.P.S. WATER TIGHT PASSING SCUTTLE
- W.C. WATER CLOSET
- PLTG. PLATING
- PASS. PASSAGE
- WELD. WELDING
- D.T. DINING TABLE
- R. RANGE

CVL 26  
MAIN DECK

SCALE - 1/4" = 1'-0"  
BU. OF SHIPS No. 461234

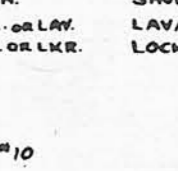






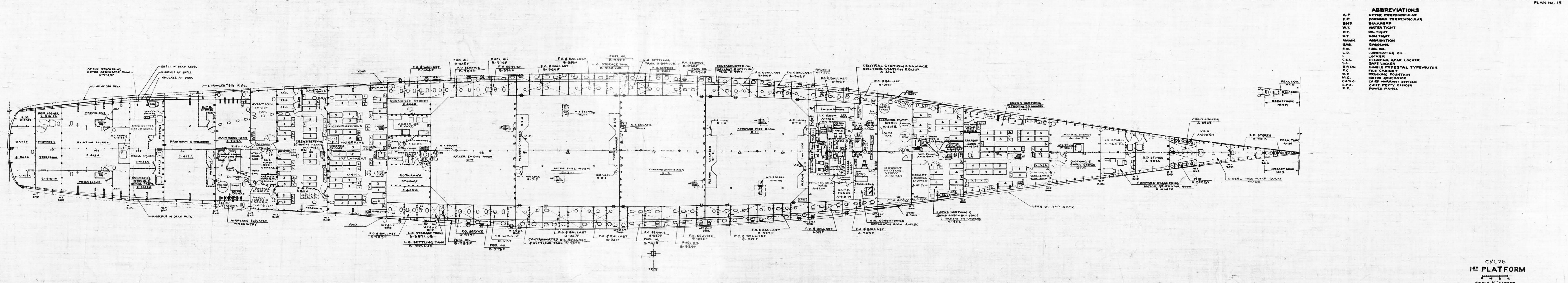
**ABBREVIATIONS**

A.P.	AFTER PERPENDICULAR	D.F.	DRINKING FOUNTAIN
F.P.	FORWARD PERPENDICULAR	C.G.L.	CLEANING GEAR LOCKER
B.M.P.	BULKHEAD	B.C.	BOOKCASE
W.T.	WATER TIGHT	CAB.	CABINET
O.T.	OIL TIGHT	L.L.	LINEN LOCKER
N.T.	NON-TIGHT	S.L.	SAFE LOCKER
AMMUN.	AMMUNITION	F.C.	FILE CABINET
W.O.	WARRANT OFFICER	F.T.D.	FLAT TOP DESK
S.R.	STATEROOM	T.W.D.	TYPEWRITER DESK
W.R.	WASH ROOM	SEC. BU.	SECRETARY BUREAU
W.C.	WATER CLOSET	CH.	CHIFFONIER
S.T.C.	SINGLE TOILET CASE	W.R.	WARDROBE
H.W.	HOT WATER	D.B.	DOUBLE BERTH
H.R.	HOBBY RACK	S.B.	SINGLE BERTH
D.W.T.	DUMBWATER TRUNK	DN.	DOWN
SM.	SHOWER	V. or VENT.	VENTILATION
L. or LAV.	LAVATORY	SH.	SHELF
L. or LKR.	LOCKER	T.L.	TABLE LEAF
		RP.	POWER PANEL
		H.V.	HYDRAULIC VALVES
		H.S.V.	HANGE! SPRINKLING VALVES
		SW.	SWITCH
		C.K.	COFFEE KETTLE
		G. & P.	GROMMET & PUNCHING



FR 76

CVL 26  
 3RD DECK  
 SCALE 1/8" = 1' 00"  
 BU. OF SHIPS No. 461234

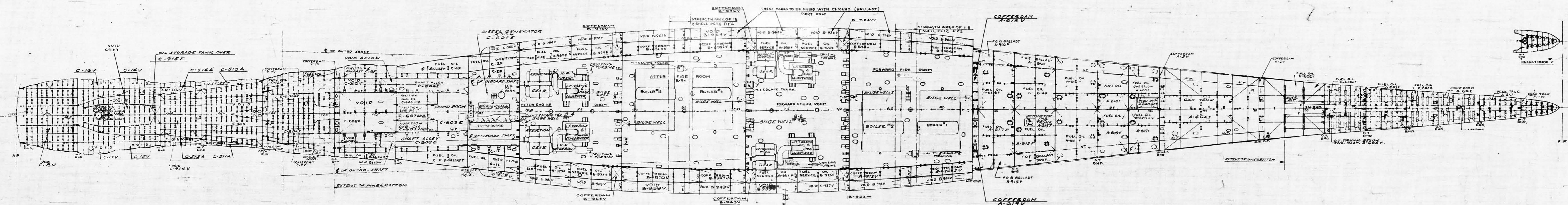


- ABBREVIATIONS**
- A.P. AFTER PERPENDICULAR
  - F.P. FORWARD PERPENDICULAR
  - B.H.D. BULKHEAD
  - W.T. WATER TIGHT
  - O.T. OIL TIGHT
  - N.T. NON TIGHT
  - AMMN. AMMUNITION
  - GAS. GASOLINE
  - F.O. FUEL OIL
  - L.O. LUBRICATING OIL
  - L. LOCKER
  - C.L. CLEANING GEAR LOCKER
  - S.L. SAFE LOCKER
  - S.T.W. SINGLE PEDESTAL TYPEWRITER
  - F.C. FILE CABINET
  - D.F. DRINKING FOUNTAIN
  - M.G. MOTOR GENERATOR
  - CH.W.O. CHIEF WARRANT OFFICER
  - C.P.O. CHIEF PETTY OFFICER
  - P.P. POWER PANEL

CVL 26  
**1<sup>ST</sup> PLATFORM**  
 SCALE 1/4" = 1 FOOT  
 BU. OF SHIPS No. 461234

ABBREVIATIONS

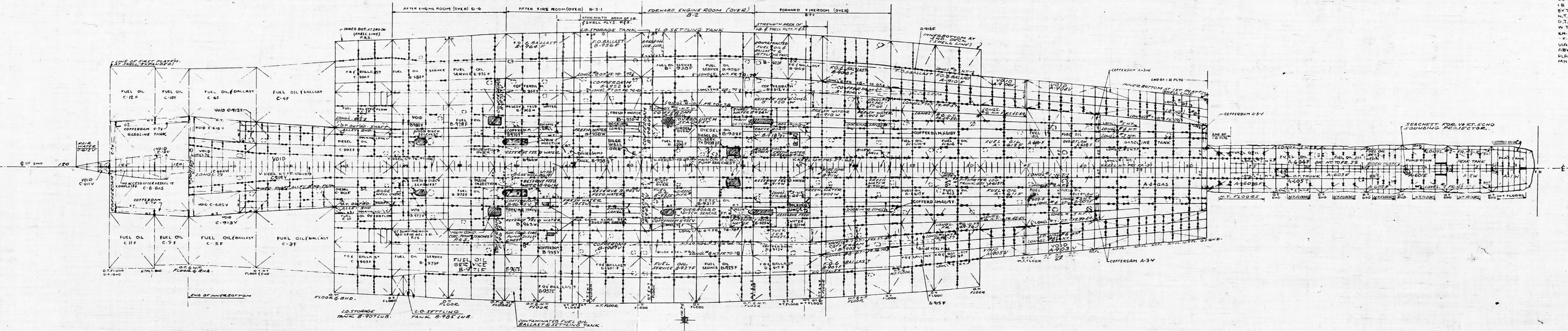
- W.T.----- WATER TIGHT
- B.H.D.----- BULKHEAD
- O.T.----- OIL TIGHT
- W.L.----- WATER LINE
- ABV.----- ABOVE
- LUB.----- LUBRICATION
- C.V.K.----- CENTERLINE, VERTICAL KEEL
- AUX.----- AUXILIARY
- P.S.----- PORT AND STARBOARD
- F.O.----- FUEL OIL
- E.----- CENTER LINE
- F.P.----- FORWARD PERPENDICULAR
- A.P.----- AFT PERPENDICULAR





ABBREVIATIONS

- LONG'L ----- LONGITUDINAL
- I.B. ----- INNER BOTTOM
- BKT ----- BRACKET
- N.T. ----- NON-TIGHT
- O.T. ----- OIL TIGHT
- WT ----- WATER TIGHT
- KN ----- KNUCKLE
- V ----- VERTICAL KEEL
- VIA ----- DIAMETER
- ABV ----- ABOVE
- PLATF ----- PLATFORM
- MH ----- MANHOLE



CVL 26  
 INNERBOTTOM  
 SCALE 1/8" = 1 FOOT  
 BU. OF SHIPS NO. 461234