

QUOTATIONS ON NEW YORK STOCKS

Table of stock quotations including American Ice, do preferred, Amalgamated Copper, Anaconda Mining Company, etc.

Table of stock quotations including do first preferred, General Electric Company, Hocking Valley Railway, etc.

Table of stock quotations including Pennsylvania Ry, People's Gas, Republic Iron & Steel, etc.

SALT LAKE QUOTATIONS

Table of salt lake quotations including Salt Lake, Feb. 18—Following were the quotations for today: Ajax, Con. Mercar, etc.

Table of salt lake quotations including Uncle Sam, Victor, Yankee, etc.

HIGGINS IS ABLE TO PRESIDE AGAIN

LIEUTENANT GOVERNOR IS BACK AFTER ILLNESS—DONE IN THE MONTANA SENATE TODAY.

SPECIAL TO THE INTER MOUNTAIN. Helena, Feb. 18.—For the first time in several days Lieutenant Governor Higgins, pale and weak from his illness, presided over the senate this afternoon.

LIVESTOCK QUOTATIONS

BY ASSOCIATED PRESS. Chicago, Feb. 18.—Cattle—Receipts, 18,000 head. Market, active and strong. Good to prime steers, \$4.40@5.60; poor to medium, \$3.00@4.25; stockers and feeders, \$3.20@4.50; cows and heifers, \$1.30@4.30; canners, \$2.00@5.50; bulls, \$1.30@2.50; calves, \$2.00@6.80; Texas steers, \$3.50@4.40.

and calves, \$3.25@4.37 1/2; bulls, \$2.50@3.75; feeders, \$2.50@6.50. Hogs—Receipts, 10,000 head; market steady to 5c lower; bulk of sales, \$7.00@7.20; heavy, \$7.12@7.25; packers, \$6.00@7.15; medium, \$7.00@7.20; mixed, \$5.50@7.12 1/2; Yorkers, \$7.00@7.12 1/2; pigs, \$6.10@6.85.

Omaha Livestock. BY ASSOCIATED PRESS. South Omaha, Feb. 18.—Cattle—Receipts, 4,000 head; market stronger to 10c higher; native steers, \$1.50@5.10; cows and heifers, \$2.85@4.00; canners, \$2.00@2.75; stockers and feeders, \$3.00@4.40; calves, \$3.00@6.25; bulls, stags, etc., \$2.00@3.75.

Kansas City Livestock. BY ASSOCIATED PRESS. Kansas City, Feb. 18.—Cattle—Receipts, 8,000 head, including 1,200 Texans; market steady to strong; native steers, \$3.50@5.25; Texas and Indian steers, \$3.00@4.20; Texas cows, \$2.00@3.75; native cows and heifers, \$1.85@4.00; stockers

Hows—Receipts, 9,000 head; market 5@10c lower; heavy, \$6.95@7.15; mixed, \$6.00@6.65; light, \$6.80@6.95; pigs, \$6.00@6.75; bulk of sales, \$6.90@7.00. Sheep—Receipts, 4,000 head; market strong; fed wethers, \$4.75@5.75; wethers, \$4.50@5.40; ewes, \$3.50@4.65; common and stockers, \$2.00@3.75; lambs, \$2.50@3.50.

Wind Saves Stock. Salt Lake, Utah, Feb. 18.—Heavy winds which have swept the ranges of Utah, Nevada, Idaho and Western Wyoming for the past two days, and still continues, are proving a salvation to stock, though disastrous to the railroads.

GOES UP ONCE MORE

Amalgamated Is Among Rising Stocks on Wall Street Mart.

BY ASSOCIATED PRESS. New York, Feb. 18.—The majority of stocks were lower at the opening today. Amalgamated Copper and Tennessee Coal were conspicuous exceptions with an advance of large fractions, and Anaconda rose 3/4 in sympathy with the former. Amongst the declines Smelting and Leather preferred reached a point. The changes otherwise were small fractions.

WRESTLING SEEMS TO BE COMING IN

(Continued from Page Eight.) every muscle. While it is not as interesting to some folks as boxing, it is just as strenuous and trying. Wrestlers, like pugilists, are not immune to disfigurement. They are subject to cauliflower ears, the same as some scrappers. This comes from constant pressure on the ears in trying to apply or evade neck, half, further and full Nelsons.

Two Styles. There are two styles of wrestling which are most used nowadays, namely, catch-as-catch-can and Graeco-Roman. Catch-as-catch-can is the most popular, because it is more diverting. It permits your opponent to grasp any part of your body, whereas Graeco-Roman rules stipulate that only holds above the waist shall count. In recent years the arm hold is applied by putting your arm around your opponent's neck and pressing on his wind. The favorite hold of a number of wrestlers is the back hammer lock. This is hard to resist and invariably results in a victory when properly applied.

THEY WANT A NEW BRIDGE

People of South Missoula Have Petitioned County Commissioners. SPECIAL TO THE INTER MOUNTAIN. Missoula, Feb. 18.—The people of South Missoula have petitioned the board of county commissioners to build a new bridge in the center of the town, but the people of South Missoula insist that they shall have a new bridge. They say that they will pay one-fourth of the cost of the new bridge if the city and county will pay the balance. The bridge which they want will be of steel, will cost about \$12,000 and will have three spans.

IN GRIP OF A BLIZZARD

BY ASSOCIATED PRESS. La Crosse, Wis., Feb. 18.—The thermometer has dropped to 20 below since Sunday night and promises to fall still further tonight. There is a great scarcity of coal and tenants of office buildings are complaining seriously of the cold.

BATTLESHIP TEXAS IS BACK AT NEW YORK

BY ASSOCIATED PRESS. Philadelphia, Feb. 18.—Reports from up the state are to the effect that last night was a record breaker for low temperature. At Pottsville early today mercury was 14 degrees below zero, and at Reading, 10 degrees below.

not as interesting, as those in which a number of falls are to score a victory. The average wrestler lasts longer than a fighter. The day of a pugilist is supposed to be between 20 and 30 years. Yet there are wrestlers in the business, who at 50, are able to throw men younger and perhaps stronger. Jenkins, Bothner and McLeod are over 30. Cannon is nearly 50 and is still on the mat doing good work. A Buffalo physician recently said that the reason a wrestler lasts longer has to do with the center of gravity. The wrestler does most of his work while down, while a pugilist has to use his feet.



THE BATTLESHIP TEXAS. BY ASSOCIATED PRESS. New York, Feb. 18.—The United States battleship Texas crossed the bar early this morning on the way up the river. She was loudly cheered on all sides as she steamed away, and the scene was one in which spontaneous and involuntary enthusiasm played a marked part. The Texas made a fine appearance and her progress was majestic and imposing.

COPPER STOCK QUOTATIONS

Table of copper stock quotations including Anaconda, Amalgamated, Osceola, Parrot, Mohawk, etc.

OPPENHEIMER VS. REGAN

In the case of Oppenheimer against ex-Sheriff Regan, growing out of the failure of J. J. Reilly & Co., and in which the ex-sheriff is alleged to have made wrongful payment of moneys under judgment, trial is still on before a jury in Judge Clancy's department of the district court. It will probably be concluded this evening.

A Record Breaker.

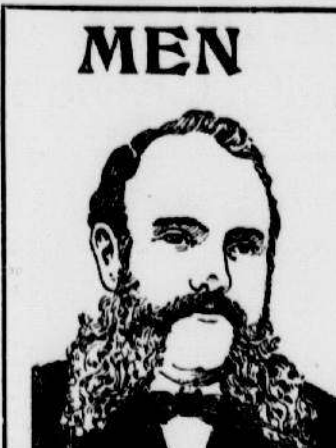
BY ASSOCIATED PRESS. Philadelphia, Feb. 18.—Reports from up the state are to the effect that last night was a record breaker for low temperature. At Pottsville early today mercury was 14 degrees below zero, and at Reading, 10 degrees below.

OPPENHEIMER VS. REGAN

In the case of Oppenheimer against ex-Sheriff Regan, growing out of the failure of J. J. Reilly & Co., and in which the ex-sheriff is alleged to have made wrongful payment of moneys under judgment, trial is still on before a jury in Judge Clancy's department of the district court. It will probably be concluded this evening.

A Record Breaker.

BY ASSOCIATED PRESS. Philadelphia, Feb. 18.—Reports from up the state are to the effect that last night was a record breaker for low temperature. At Pottsville early today mercury was 14 degrees below zero, and at Reading, 10 degrees below.



OUR PRACTICE IS, THE LARGEST BECAUSE WE INVARIABLY FULFILL OUR PROMISES. Why Our Cures Are Permanent. Our practice presents a peculiar feature that we believe is not found in any other physician's practice.

WEEKNESS Weakness is not a nervous disorder, demanding a tonic system of treatment, but is merely a symptom of chronic inflammation or congestion in the prostate gland.

Yellek Medical Institute N. E. Corner W. Broadway and Montana Sts., Butte, Mont.

OUR PRACTICE IS, THE LARGEST BECAUSE WE INVARIABLY FULFILL OUR PROMISES. Why Our Cures Are Permanent.

WEEKNESS Weakness is not a nervous disorder, demanding a tonic system of treatment, but is merely a symptom of chronic inflammation or congestion in the prostate gland.

Yellek Medical Institute N. E. Corner W. Broadway and Montana Sts., Butte, Mont.

TRICKY FITZ WILL FOOL BEST OF 'EM

(Continued from Page Eight.) to an admiring throng one day. "Only let me at him!" So a match was made between Hickey and Fitz for four rounds at Shooting Park. Those who had Hickey in tow told him that the only way to beat Fitz was to wade right in from the start, swing right and left for the head. They also told Fitz about the Irishman, and Bob got into the humor of the affair immediately. When Hickey got into the ring that night he was confident of winning an easy victory.

EASY MONEY.

"I never seen this here Fitzsimmons," said he to his seconds, "but when I do I'll tell you how easy it'll be!" He appeared, Robert noted a scold's look, and apparently was so rattled that he could not climb through the ropes. One of his seconds showed him how to get into his corner, and the moment he sat down he was seemingly in a tremble.

BELIEVE FRANK BAER IS BEARMOUTH TRAIN ROBBER

The dispatch from Washington telling of the arrest of Franklin Baer, alias Joseph Meyer, on the charge of robbery, and his subsequent claim that he was the highwayman who held up the Northern Pacific passenger train near Bearmouth, has added to the general interest in hold-up news in this vicinity. The dispatch stated that Baer was arrested for some other offense and then communicated to a detective that he was the man who held up the train; that he got the larger part of the sum of \$1,500, part of which is now on deposit in a Chicago bank.

WE ISSUE Special Advices Daily

200 Page Quotation Record FREE UPON APPLICATION Both Are Indispensable to Active Traders.

Clarke, Wallace & Co. BANKERS AND BROKERS 67 Broadway, BOSTON, MASS. 40 State Street, NEW YORK.

POGSON, PELOUBET & CO. Public Accountants

New York - 20 Broad Street Chicago - Marquette Building St. Louis - Chemical Building Butte - Hennessy Building

THE FIRST NATIONAL BANK OF BUTTE

(Established 1879.) Capital - \$200,000.00 GENERAL BANKING Drafts drawn on all principal cities of the world and letters of credit issued.

SILVER EOW NATIONAL BANK

CAPITAL \$100,000.00 This bank solicits accounts, offers prompt and careful attention to business of customers. Collections promptly attended to and remitted for on day of collection.

The Daily Bank and Trust Company of Anaconda. General banking in all branches. Sell exchanges on New York, Chicago, St. Paul, Omaha, San Francisco, etc., and draw direct on the principal cities of England, France, Ireland, Germany and the Orient.

DAILY BANK AND TRUST COMPANY OF BUTTE. Established 1882. Incorporated 1901. Capital \$100,000.00 General Banking Business JOHN D. RYAN, President JOHN R. TOOLE, Vice President C. C. SWINBORNE, Cashier R. A. KUNKLE, Assistant Cashier

STATE SAVINGS BANK John A. Creighton, President G. W. Stapleton, Vice President T. M. Hodgson, Cashier J. O. Hodgson, Assistant Cashier R. B. Nuckolls, Assistant Cashier

W. A. Clark, J. Rosa Clark. W. A. CLARK & BRO. BANKERS Transacts General Banking Business. Buy gold dust, gold bars, silver bullion and local securities.

W. A. Clark, J. Rosa Clark. W. A. CLARK & BRO. BANKERS Transacts General Banking Business. Buy gold dust, gold bars, silver bullion and local securities.

THE FIRST NATIONAL BANK OF BUTTE (Established 1879.) Capital - \$200,000.00 GENERAL BANKING Drafts drawn on all principal cities of the world and letters of credit issued.

SILVER EOW NATIONAL BANK CAPITAL \$100,000.00 This bank solicits accounts, offers prompt and careful attention to business of customers. Collections promptly attended to and remitted for on day of collection.

All Kinds of Coal and Wood. CITIZENS' COAL CO. No. 4 East Broadway, at Calkins.