

WAR ON LAND AND SEA.

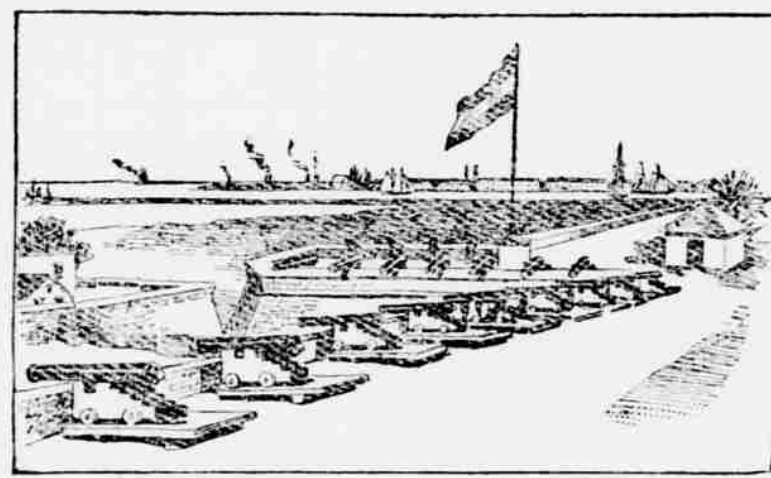
TERMS.
Subscription \$1.00 per year in advance. Single copies 5 cents.

WITH A GOOSE QUILL.

The Civil Federation of Chicago, however that it has issued a call for a national conference of 1000 delegates to be held at Saratoga, August 19 and 20 to discuss the question of the future foreign policy of the United States, and what shall be done with the new territories of Cuba, Porto Rico and the Philippine Islands, now in part occupied by United States troops.

By official report, twenty-two Americans were wounded on Schley's war ship in their destructive battle with Cervera's fleet. There are six powerful German war ships at Manila, which causes suspicion, regardless of the professed friendship of Germany. The German is naturally cautious, and it may be that causes him to assemble such a powerful fleet of war ships to protect his interests in the Philippine islands.

By late despatches, information is received that Dewey's forces are moving on Manila which is protected by forts that four months ago were considered sufficient. The following is a picture of one of the forts at Manila.



SEA WALL AND BATTERIES AT MANILLA.

Manilla, Philippine islands, is very poorly protected against attack. It has a fine sea wall extending around the harbor, and above this are some batteries which may look formidable to the civilian, but are not. The guns are of old style, entirely inadequate to cope against the big rifles mounted by modern warships.

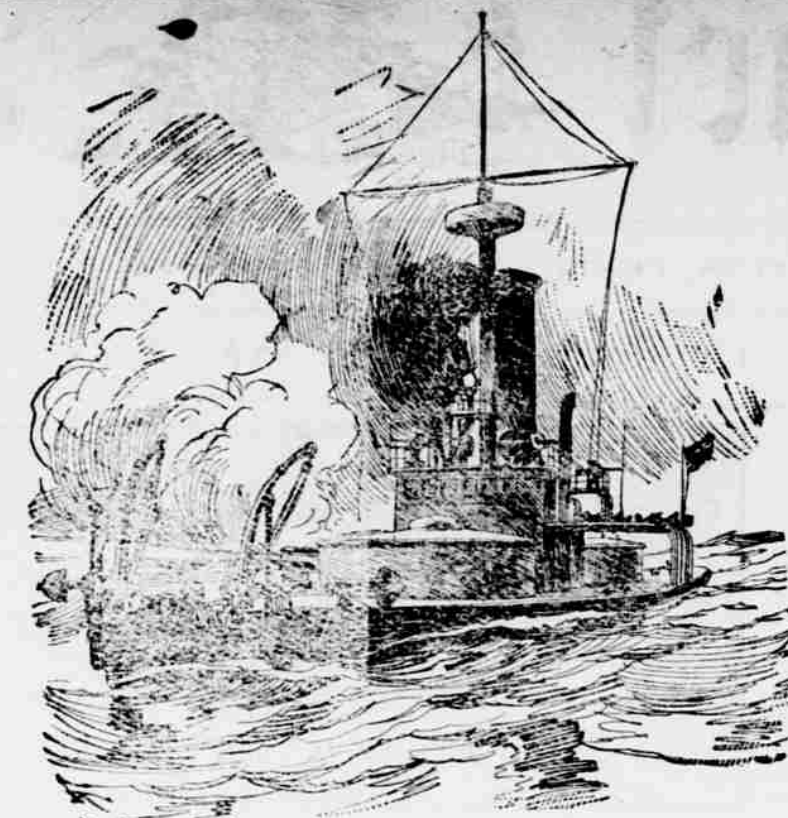
The 4th and 16th Pennsylvania regiments are on their way to Porto Rico, also light battery B., of Pennsylvania. Porto Rico, is 1400 miles from Charleston, South Carolina; 1250 miles from Tampa, Florida, and 750 miles from Santiago, where the Spanish fleet and army was trapped.

The Cubans are disgusted with the Americans, also, the Americans are disgusted with the humanity business for the Cubans. From present appearance, the Cubans will prove to be more trouble some than the Spaniards were.

Dewey is a significant name, it is suggestive of work in the early morning, such as capturing Manila early in the morning, before the average sluggard was out of bed. Dewey is suggestive of sly dexterous work such as penning Cervera in Santiago harbor, and capturing him when he came out. Sampson is suggestive of strong work, such as the organization and manning of a great fleet, and Shafter is suggestive of a shaft, driven with conquering force through the vitals of a warlike enemy.

Mines that were laid in the ports of the United States have been removed, because the Spanish fleets have been so reduced that the war ships that are saved to Spain will be needed at home. They do not now think of coming to bombard American cities. They are thinking how they may escape bombardment of their cities. But still with all such facts in view there is more or less apprehension in American coast cities, that a stray Spanish ship of war might pay a flying visit to the Atlantic coast line and shell a number of our great cities.

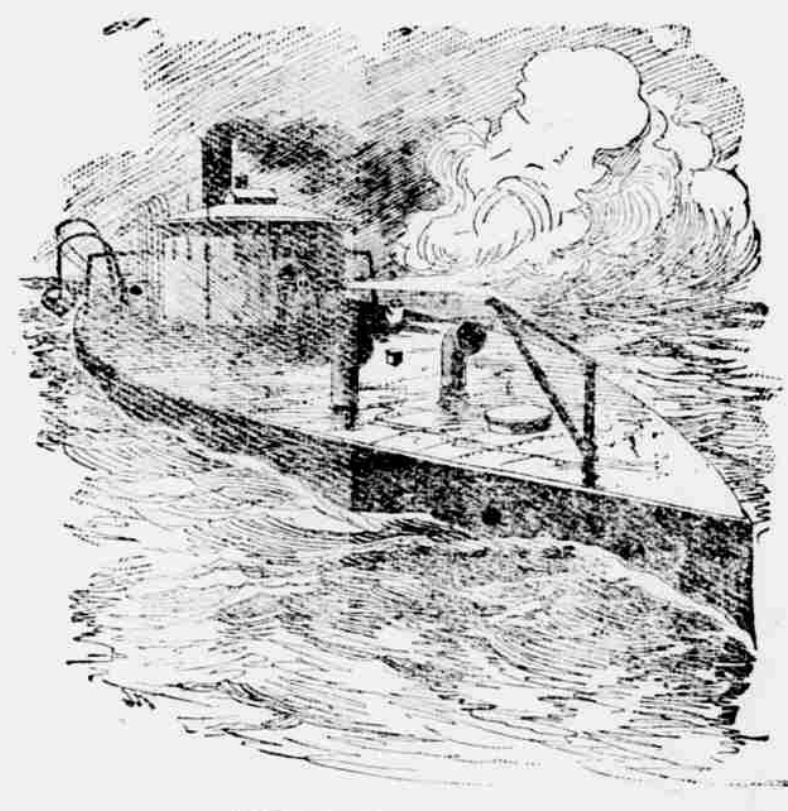
It would be risky work for Spanish war ships to come to American waters, for all the American cities along the coast have powerful monitors on the look out for piratical Spaniards. Such monitors as the Miantonomoh, would soon make short work of the ships of the Dons.



THE MONITOR MIANTONOMOH.

The Miantonomoh, although a modern double turreted monitor, was begun in 1862 and finished soon after the war. She was the first of the monitors to cross the ocean, and her appearance in British waters led a member of parliament to say that she gave Americans control of the seas. Since then the Miantonomoh has been rebuilt of steel.

Such monitors as the Ajax would paralyze a whole fleet of Spanish war ships.



THE MONITOR AJAX.

The Ajax is one of the old single turreted monitors built during the civil war, but instead of being allowed to sink in the mud with the others of her class she was used by the naval militia of Camden, N. J. She has been put in commission and her armament of smoothbore supplemented by rapid fire rifles of small caliber.

The monitor Jason, is a powerful single turreted monitor, that would make any coast city safe from Spanish war ships. She is as much of a rammer as a shooter. So the list might be multiplied but the present illustrations are sufficient to show what formidable iron clad American war ships are on guard at our sea coast cities.

A conflict of affairs is reported from Santiago. Garcia the general of 4,000 Cubans had an unexplained difficulty with general Shafter, and withdrew his army of 4,000 Cuban troops from General Shafter's army, report says, Garcia wanted Santiago as the capital city for the Cuban government and when he learned that it was not to be set apart for that purpose he withdrew his army, going in the direction of Haguin which city he said he'd capture and start the Cuban government there. On his march from Santiago he met 5,600 Spanish troops coming in to surrender to Shafter. Garcia ordered the Spaniards to surrender to him, they said they would not, that they would surrender to the Americans. The Cubans opened fire on the Spaniards, a fierce battle was fought, the Cubans were defeated, had some 50 killed, and many wounded. The latest despatches concerning the Garcia fight is a denial of the battle, which is more agreeable news. Four American ships of war captured the harbor of Nipe, on the north east corner of Cuba on the opposite side of the island from Santiago. It was an hour's fight. Three forts were taken and the Spanish gun boat Jorge Juan was sunk. Commodore Watson is on the way to Spanish waters to hunt for Admiral Camara's fleet of Spanish war ships that started to drive out Dewey, and then turned about and returned to Spain. By and by, Watson will catch the fleet of Camara, and thereby hangs a tale. The fleet conveying the army of General Miles arrived off Porto Rico on Sunday, and the landing of troops was begun. Cuba is not the only place that hostility is manifested by the people that the American government is helping to a state of free government. In the Philippine islands the insurgents are showing an inclination to resent American help. They don't call it help now. They call it interference. At first they were wildly anxious for help; now that the Americans have helped them off the gridiron of Spanish misrule they want the Americans to stand off.

LEGAL NOTICE.
NOTICE is hereby given that the Board of Burgesses and Town Council of the Borough of Mifflintown, Pa., by ordinance duly enacted on July 25, 1898, admitted and annexed as part of the Borough of Mifflintown in the County of Juniata and State of Pennsylvania, the lots and tracts of land comprising the Addition, adjacent to said Borough, and they have filed a plan or plat of the said extension this date in the office of the Quarter Sessions of Juniata County, J. HOWARD BROWN, Secretary Town Council Borough of Mifflintown.

Table with 2 columns: MIFFLINTOWN GRAIN MARKETS (July 27, 1898) and PHILADELPHIA MARKETS (July 25, 1898). Lists prices for various commodities like wheat, corn, and flour.

LOUIS K. ATKINSON, F. M. M. PENNELL, ATTORNEYS-AT-LAW, MIFFLINTOWN, PA. OFFICE—On Main street, in place of residence of Louis K. Atkinson, Esq., north of Bridge street. Collecting and Conveyancing promptly attended to.

WILBERFORCE SCHWEYER, Attorney-at-Law. Collections and all legal business promptly attended to. OFFICE IN COURT HOUSE.

H. P. DERR, PRACTICAL DENTIST. Graduate of the Philadelphia Dental College. Office at old established location, Bridge Street, opposite Court House, Mifflintown, Pa. Crown and Bridge work; Painless Extraction. All work guaranteed.

PENNSYLVANIA RAILROAD. Schedule in Effect May 27, 1898. WESTWARD. Way Passenger, leaves Philadelphia at 4:30 a. m.; Harrisburg 8:00 a. m.; Duncannon 8:35 a. m.; New Port 9:05 a. m.; Millersburg 9:15 a. m.; Darward 9:21 a. m.; Thompsonstown 9:26 a. m.; Van Dyke 9:33 a. m.; Tuscarora 9:38 a. m.; Mexico 9:44 a. m.; Port Royal 9:44 a. m.; Millin 9:49 a. m.; New Port 9:54 a. m.; Lewisstown 10:15 a. m.; McVeystown 10:38 a. m.; Newton Hamilton 11:00 a. m.; Mount Union 11:00 a. m.; Huntingburg 11:32 a. m.; Tyrone 11:39 a. m.; Altoona 1:00 p. m.; Pittsburg 5:59 p. m. Mail leaves Philadelphia at 7:00 a. m.; Harrisburg at 11:48 a. m.; Millin 1:11 p. m.; Lewisstown 1:39 p. m.; Huntingburg 2:29 p. m.; Tyrone 3:12 p. m.; Altoona 3:45 p. m.; Pittsburg 8:30 p. m. Altoona Accommodation leaves Harrisburg at 5:00 p. m.; Duncannon 5:34 p. m.; New Port 6:02 p. m.; Millersburg 6:11 p. m.; Thompsonstown 6:21 p. m.; Tuscarora 6:30 p. m.; Mexico 6:33 p. m.; Port Royal 6:38 p. m.; Millin 6:43 p. m.; Darward 6:49 p. m.; Lewisstown 7:02 p. m.; McVeystown 7:30 p. m.; Newton Hamilton 7:50 p. m.; Huntingburg 8:20 p. m.; Tyrone 9:02 p. m.; Altoona 9:35 p. m. Pacific Express leaves Philadelphia at 11:20 p. m.; Harrisburg at 3:00 a. m.; Margsville 3:14 a. m.; Duncannon 3:29 a. m.; New Port 3:52 a. m.; Millersburg 4:25 a. m.; Millin 4:30 a. m.; Lewisstown 4:32 a. m.; Newton Hamilton 5:33 a. m.; Huntingburg 6:05 a. m.; Petersburg 6:19 a. m.; Altoona 7:49 a. m.; Pittsburg 12:10 a. m. Oyster Express leaves Philadelphia at 4:45 p. m.; Harrisburg at 10:20 p. m.; New Port 11:45 p. m.; Millin 11:49 p. m.; Lewisstown 11:58 p. m.; Huntingburg 12:53 a. m.; Tyrone 1:32 a. m.; Altoona 2:00 a. m.; Pittsburg 5:30 a. m. East Line leaves Philadelphia at 12:25 p. m.; Harrisburg 3:50 p. m.; Duncannon 4:15 p. m.; New Port 4:35 p. m.; Millersburg 4:57 p. m.; Lewisstown 5:27 p. m.; Mount Union 6:08 p. m.; Huntingburg 6:27 p. m.; Tyrone 7:04 p. m.; Altoona 7:40 p. m.; Pittsburg 11:20 p. m. EASTWARD. Altoona Accommodation leaves Altoona at 4:40 a. m.; Harrisburg 7:04 a. m.; Petersburg 7:25 a. m.; Huntingburg 7:37 a. m.; Newton Hamilton 6:01 a. m.; McVeystown 6:17 a. m.; Lewisstown 6:38 a. m.; Millin 6:38 a. m.; Port Royal 7:02 a. m.; Thompsonstown 7:17 a. m.; Millersburg 7:29 a. m.; New Port 7:35 a. m.; Duncannon 8:00 a. m.; Harrisburg 8:30 a. m. Sea Shore leaves Pittsburg at 2:50 a. m.; Altoona 7:15 a. m.; Tyrone 7:48 a. m.; Huntingburg 8:30 a. m.; McVeystown 9:15 a. m.; Lewisstown 9:55 a. m.; Millin 9:55 a. m.; Port Royal 9:59 a. m.; Millersburg 10:14 a. m.; Millersburg 10:22 a. m.; New Port 10:32 a. m.; Duncannon 10:34 a. m.; Margsville 11:07 a. m.; Harrisburg 11:25 a. m.; Philadelphia 3:00 p. m. Main Line Express leaves Pittsburg at 8:00 a. m.; Altoona 11:40 a. m.; Tyrone 12:02 a. m.; Huntingburg 12:50 p. m.; Lewisstown 1:30 p. m.; Millin 1:30 p. m.; Harrisburg 2:10 p. m.; Baltimore 6:00 p. m.; Washington 7:15 p. m.; Philadelphia 9:25 p. m. Mail leaves Altoona at 2:05 p. m.; Tyrone 2:25 p. m.; Huntingburg 3:17 p. m.; Newton Hamilton 3:37 p. m.; McVeystown 4:10 p. m.; Lewisstown 4:33 p. m.; Millin 4:33 p. m.; Port Royal 4:59 p. m.; Mexico 5:29 p. m.; Thompsonstown 5:18 p. m.; Millersburg 5:28 p. m.; New Port 5:39 p. m.; Duncannon 6:08 p. m.; Harrisburg 6:45 p. m. Mail Express leaves Pittsburg at 1:00 p. m.; Altoona 6:10 p. m.; Tyrone 6:42 p. m.; Huntingburg 7:25 p. m.; McVeystown 8:05 p. m.; Lewisstown 8:37 p. m.; Millin 8:37 p. m.; Port Royal 8:52 p. m.; Millersburg 9:16 p. m.; New Port 9:26 p. m.; Duncannon 9:50 p. m.; Harrisburg 10:20 p. m. Philadelphia Express leaves Pittsburg at 4:30 p. m.; Altoona 9:05 p. m.; Tyrone 9:33 p. m.; Huntingburg 10:12 p. m.; Mount Union 10:12 p. m.; Lewisstown 11:06 a. m.; Millin 11:06 a. m.; Lewisstown 11:06 a. m.; Philadelphia 4:30 p. m. At Lewisstown Junction.—For Salisbury 7:20 a. m. and 3:45 p. m. weekdays. For Myer 6:15, 10:20 a. m. and 3:00 p. m. weekdays. At Tyrone.—For Clearfield and Curwensville 8:20 a. m., 3:20 and 7:20 p. m. weekdays. For Bell and 7:15 p. m. weekdays. For further information apply to Ticket Agents, or Thomas E. Watt, Passenger Agent, Western Division, Corner Fifth Avenue and Smithfield Street, Pittsburg. J. B. HUTCHINSON, J. R. WOOD, General Managers, General Pass' Agent.

Tuscarora Valley Railroad. SCHEDULE IN EFFECT MONDAY, JUNE 20, 1898. EASTWARD. STATIONS. No. 1 No. 3. Blair's Mills.....Lv. 7:25 1:45. Waterloo..... 7:31 1:51. Leonard's Grove..... 7:37 1:57. Ross Farm..... 7:45 2:05. Perlick..... 7:52 2:12. East Waterford..... 8:05 2:25. Heckman..... 8:17 2:37. Honey Grove..... 8:22 2:42. Fort Bigham..... 8:30 2:50. Warble..... 8:39 2:59. Pleasant View..... 8:44 3:04. Seven Pines..... 8:52 3:12. Spruce Hill..... 8:53 3:15. Graham's..... 9:03 3:23. Stewart..... 9:06 3:26. Freedom..... 9:09 3:29. Turbett..... 9:12 3:32. Old Port..... 9:18 3:38. Port Royal.....Ar. 9:25 3:45.

Tuscarora Valley Railroad. WESTWARD. STATIONS. No. 2 No. 4. Blair's Mills.....Lv. 7:25 1:45. Waterloo..... 7:31 1:51. Leonard's Grove..... 7:37 1:57. Ross Farm..... 7:45 2:05. Perlick..... 7:52 2:12. East Waterford..... 8:05 2:25. Heckman..... 8:17 2:37. Honey Grove..... 8:22 2:42. Fort Bigham..... 8:30 2:50. Warble..... 8:39 2:59. Pleasant View..... 8:44 3:04. Seven Pines..... 8:52 3:12. Spruce Hill..... 8:53 3:15. Graham's..... 9:03 3:23. Stewart..... 9:06 3:26. Freedom..... 9:09 3:29. Turbett..... 9:12 3:32. Old Port..... 9:18 3:38. Port Royal.....Ar. 9:25 3:45.

LEGAL NOTICE.
NOTICE is hereby given that the Board of Burgesses and Town Council of the Borough of Mifflintown, Pa., by ordinance duly enacted on July 25, 1898, admitted and annexed as part of the Borough of Mifflintown in the County of Juniata and State of Pennsylvania, the lots and tracts of land comprising the Addition, adjacent to said Borough, and they have filed a plan or plat of the said extension this date in the office of the Quarter Sessions of Juniata County, J. HOWARD BROWN, Secretary Town Council Borough of Mifflintown.

DEWEY HAS CAPTURED MANILLA

And destroyed the Spanish fleet. We have captured the remaining Spring Stock of Clothing, consisting of Men's, Boys' and Children's Suits.

From one of the largest and well-known Clothing Houses of Liverpool, Greenewalt & Co., 1013 Market street, Philadelphia, for 45 cents on the dollar. A clothing sale such as has never been known in the History of Juniata County. LIVERIGHT GREENEWALT & Co., Manufacturers of Clothing, 1013 Market Street, Philadelphia, Pa., May 10, 1898.

Mr. Ferd Meyers, Dear Sir:—We find the backward season this Spring has prevented us in closing out our large new Spring Stock and we find ourselves loaded with an immense stock of new Clothing. The only remedy we have to dispose of it is to sacrifice prices. Knowing that you are a large cash buyer no doubt you will take the opportunity offered to you and buy the remainder of our stock at 45 cents on the dollar. Shall we submit samples. Please answer by return mail. Yours Resp't, LIVERIGHT GREENEWALT & Co.

Office of FERD MEYERS, Millintown, Pa., May 12, 1898. Dealer in Clothing and Furniture. We are always open for Bargains. Please send samples at once. If styles and quality are satisfactory we will buy the remainder of your stock. Yours respectfully, FERD MEYERS.

WEDNESDAY, JULY 27, 1898. The season for Furniture is about to a close and we find we must have more room for our large fall stock which will arrive in due time. Therefore we are compelled to close out the remainder of our spring stock. All our former prices are marked down 20 per cent. Now is your opportunity to buy furniture at a sacrifice. Don't miss this chance. 115 and 117 Bridge Street. FERD MEYERS.

RAILROAD TIME TABLE. PERRY COUNTY RAILROAD. The following schedule went into effect Nov. 16, 1896, and the trains will be run as follows:

NEWPORT AND SHERMAN'S VALLEY RAILROAD COMPANY. Time table of passenger trains, in effect on Monday, May 18th, 1896.

FARQUHAR Variable Friction Feed SAW MILL and Ajax Center Crank Engine. Rapid, accurate, strong and simple, with large capacity. Engines or mills of various sizes and styles. No Farquhar engine or mill ever failed. Also steam pumps, generally. Has first-class Catalogue and price list.

HENCH & DRONGOLD'S. A. B. FARQUHAR CO., Ltd., York, Pa. HENCH & DRONGOLD'S. A. B. FARQUHAR CO., Ltd., York, Pa.

FARMERS READ THIS.

In order to reliably determine the relative value of our several brands of fertilizers, upon the wheat crop of Juniata county, we have decided to offer PUREMIXES amounting to \$100 for the best three acres of wheat grown in the use of OUR FERTILIZERS. We want to know what is best by actual field trials. Agents may talk, but FACTS ARE FACTS. The Premiums to be divided into three classes as follows: First Prize \$50.00. Second Prize \$35.00. Third Prize \$15.00. The best to be made on three acres using our Brands of FERTILIZERS. The money will be deposited with the Juniata County Agricultural Society, who will name the Judges and award the PUREMIXES September 1898. All persons wishing to enter the contest will register with the Secretary of the Agricultural Society. JAMES N. GREENGLASS, T. S. MOORHEAD & Co., 1500 North Royal, June 27th, 1898. WONDERFUL are the cures by HENCK'S Sarsaparilla, and yet they are cheap and natural. Head's Sarsaparilla makes PURE BLOOD.