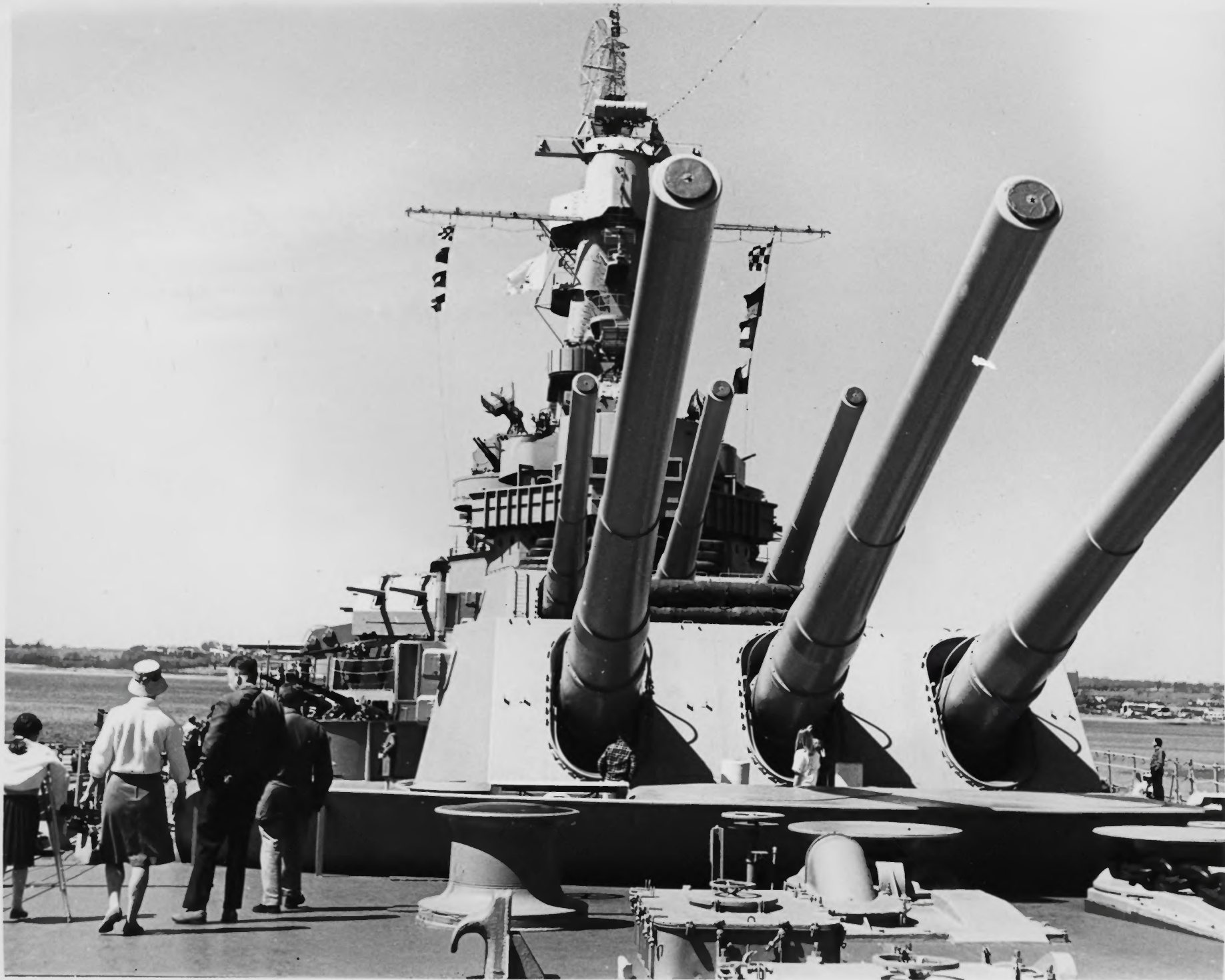




1. USS Massachusetts
2. Fall River, Massachusetts
3. USS Massachusetts Memorial Committee
4. Late 1970s
5. USS Massachusetts Memorial Committee
6. Exterior Side View
7. Photo #1



1. USS Massachusetts
2. Fall River, Massachusetts
3. US Navy
4. 1942
5. USS Massachusetts Memorial Committee
6. Exterior Side View
7. Photo #2



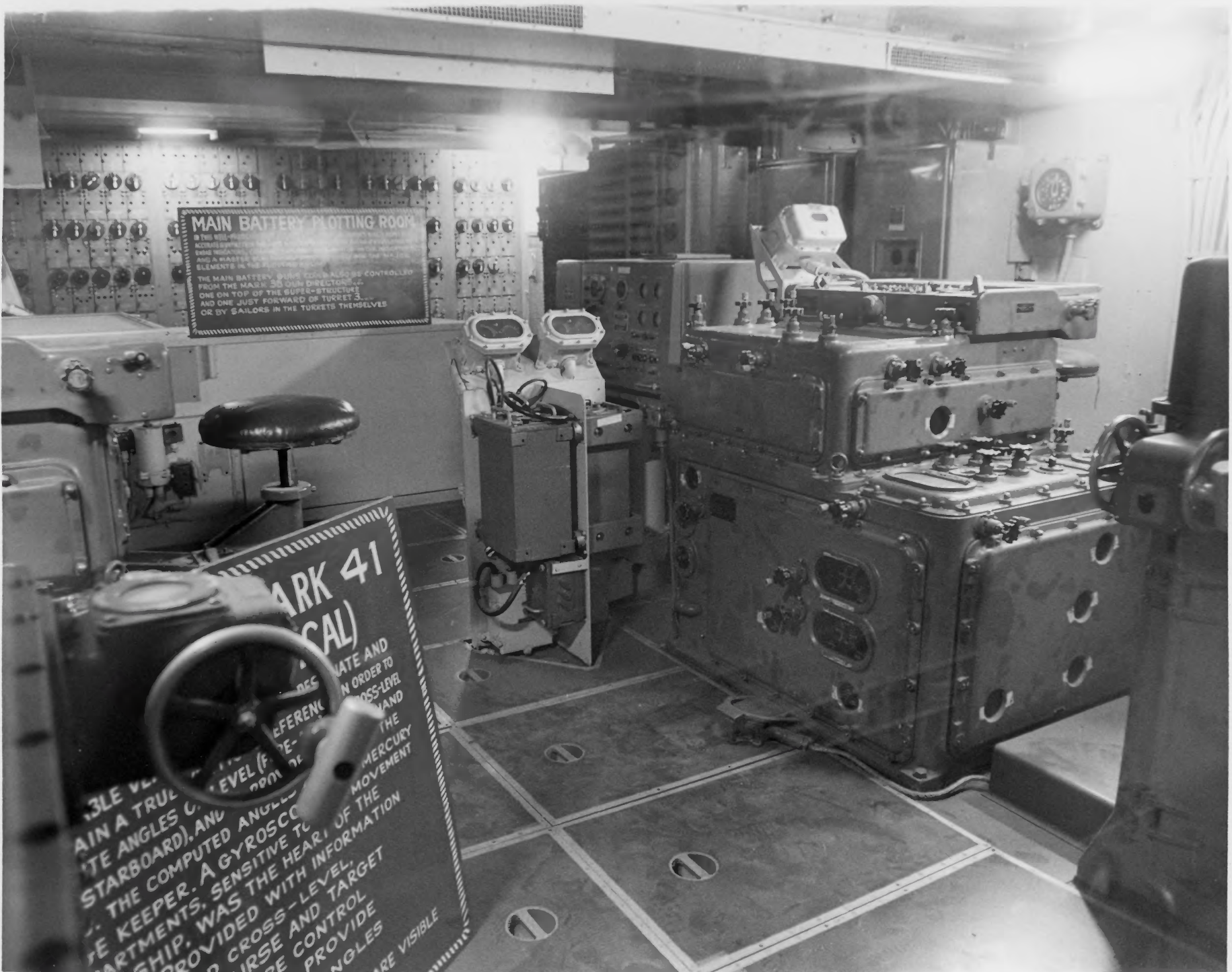
1. USS Massachusetts
2. Fall River, Massachusetts
3. Martin R. Adler
4. 1984
5. USS Massachusetts Memorial Committee
6. Main Battery and Superstructure from Bow
7. Photo #3

MAIN BATTERY PLOTTING ROOM
 IN THIS ROOM THE MAIN BATTERY IS CONTROLLED FROM THE MARK 41 PLOTTING ROOM. ACCORDING TO THE POSITION OF THE TARGET AND THE POSITION OF THE BATTERY ELEMENTS IN THE BATTERY ROOMS.

THE MAIN BATTERY BURNS TORPEDOES CONTROLLED FROM THE MARK 41 PLOTTING ROOM. ONE ON TOP OF THE SUPER-STRUCTURE AND ONE JUST FORWARD OF TURRET 3. OR BY SAILORS IN THE TURRETS THEMSELVES.

MARK 41 (CAL)

ABLE VE...
 MAIN A TRUL...
 TE ANGLES C...
 STARBOARD), AND...
 THE COMPUTED ANGLES...
 TE KEEPER. A GYROSCOPE...
 PARTMENTS, SENSITIVE TO...
 SHIP. PROVIDED WITH INFORMATION...
 PROVIDED WITH INFORMATION...
 CROSS-LEVEL, COURSE AND TARGET...
 COURSE AND TARGET...
 PROVIDE...
 ANGLES...
 ARE VISIBLE



1. USS Massachusetts
2. Fall River, Massachusetts
3. USS Massachusetts Memorial Committee
4. 1984
5. USS Massachusetts Memorial Committee
6. Main Battery Plot
7. Photo #4

40MM HEAVY MACHINE GUN

THE 40MM IS A WATER-COOLED HAND-FED, RECOIL-OPERATED HEAVY MACHINE GUN DESIGNED FOR USE AGAINST AIRCRAFT. THE AMMUNITION IS LOADED IN CLIPS OF FOUR ROUNDS EACH. EACH OF THE CARTRIDGES WEIGHS 48 LBS. AND THE PROJECTILE ITSELF WEIGHS JUST UNDER TWO POUNDS. MUZZLE VELOCITY WAS 2800 FEET PER SECOND (900 MPH). THE GUN HAD A MAXIMUM HORIZONTAL RANGE OF 8.25 MILES BUT, UNLESS THE PROJECTILE HIT THE TARGET, IT WOULD NORMALLY SELF-DESTRUCT AT ABOUT 2.5 MILES. IT HAS A NOMINAL RATE OF FIRE OF 20 ROUNDS PER MINUTE.

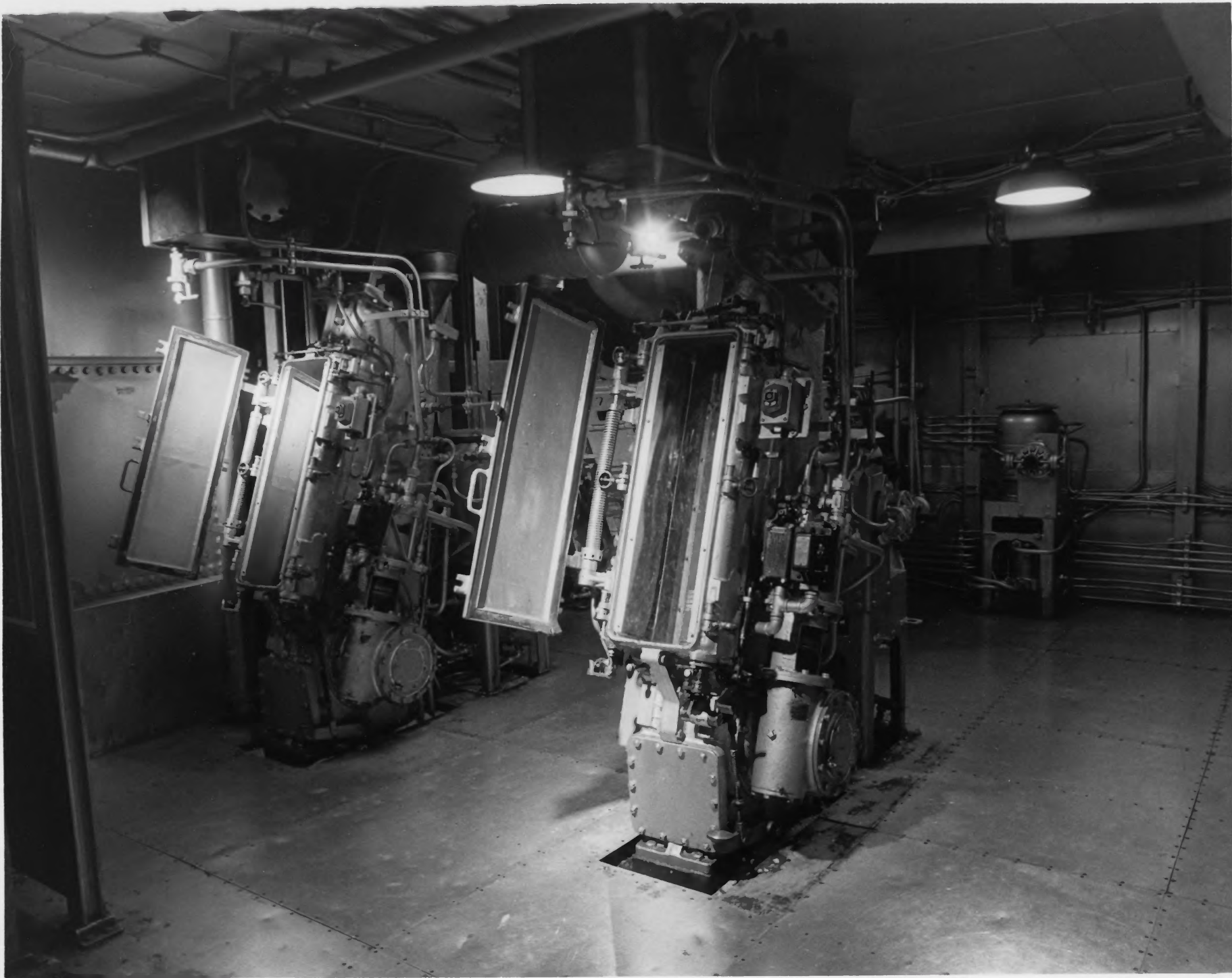
SECONDARY BATTERY PLOTTING ROOM

THIS ROOM ORIGINALLY CONTAINED FIRE CONTROL INSTRUMENTS SIMILAR TO THOSE IN MAIN BATTERY PLOT, FOR THE SHIP'S SECONDARY BATTERY OF 20 5" GUNS. THE INSTRUMENTS WERE REMOVED FOR USE ON ACTIVE VESSELS AFTER THE MASSACHUSETTS WENT INTO MOTHBALLS.

16" PROJECTILE BAGS FOR MAIN

THIS 16" PRACTICE PROJECTILE AS AN ACTUAL CHARGE WOULD FIT INTO THE BREACH OF THE GUN. AN ARMOR-PIERCING PROJECTILE WEIGHS 2700 LBS. DEPENDING UPON THE PRACTICE BAG WEIGHT. POLYMER BAG WEIGHT WAS 200 LBS. AND CHAMBER PRESSURE WAS 18 TONS PER SQUARE INCH. A GOOD DAY WITH LIGHT WINDS, PROJECTILES COULD BE FIRED AT A FLIGHT TIME OF 10 SECONDS AT A RANGE SPEED OF 1600 FEET PER SECOND.

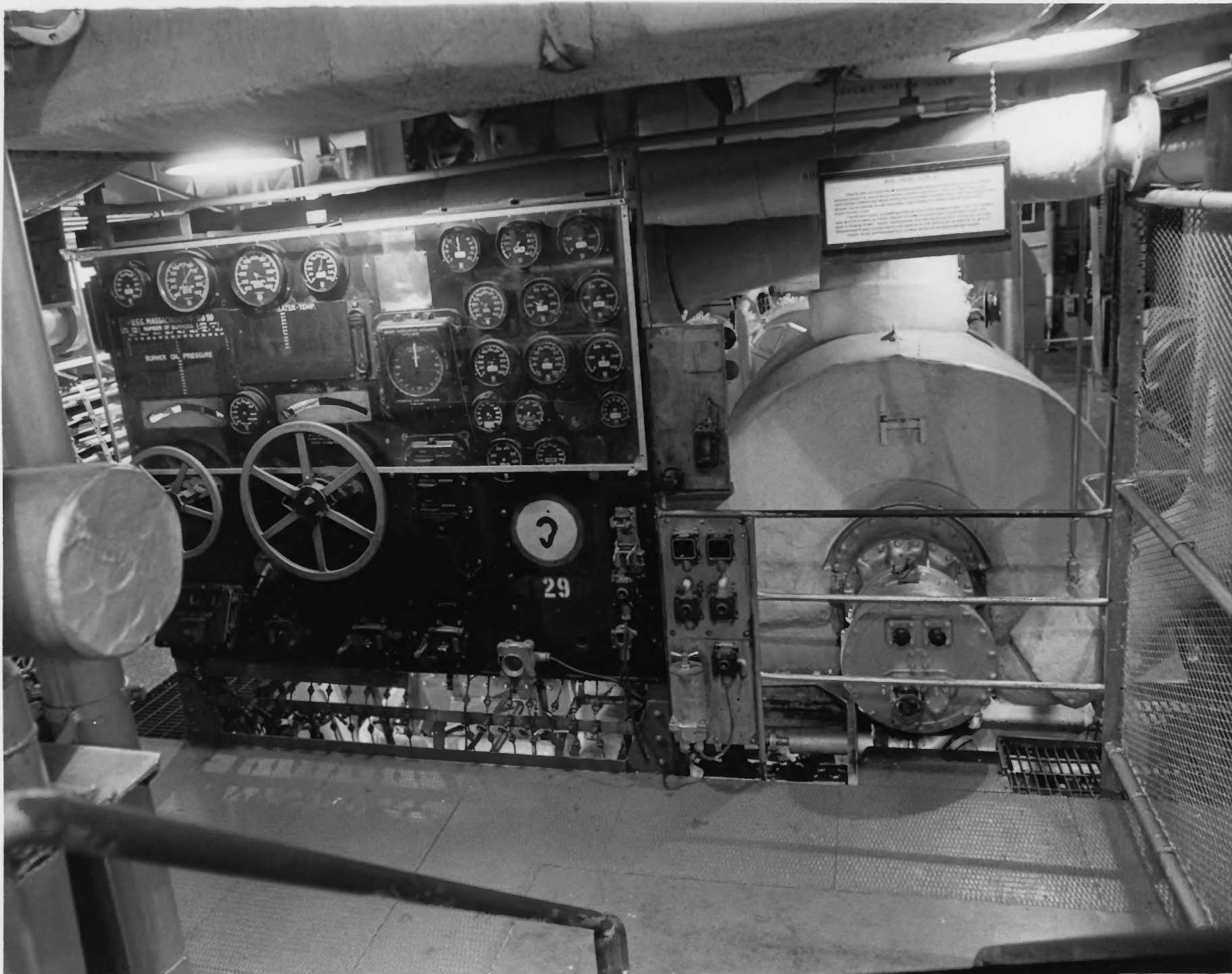
1. USS Massachusetts
2. Fall River, Massachusetts
3. USS Massachusetts Memorial Committee
4. 1984
5. USS Massachusetts Memorial Committee
6. Ordnance exhibit in secondary battery plot
7. Photo #5



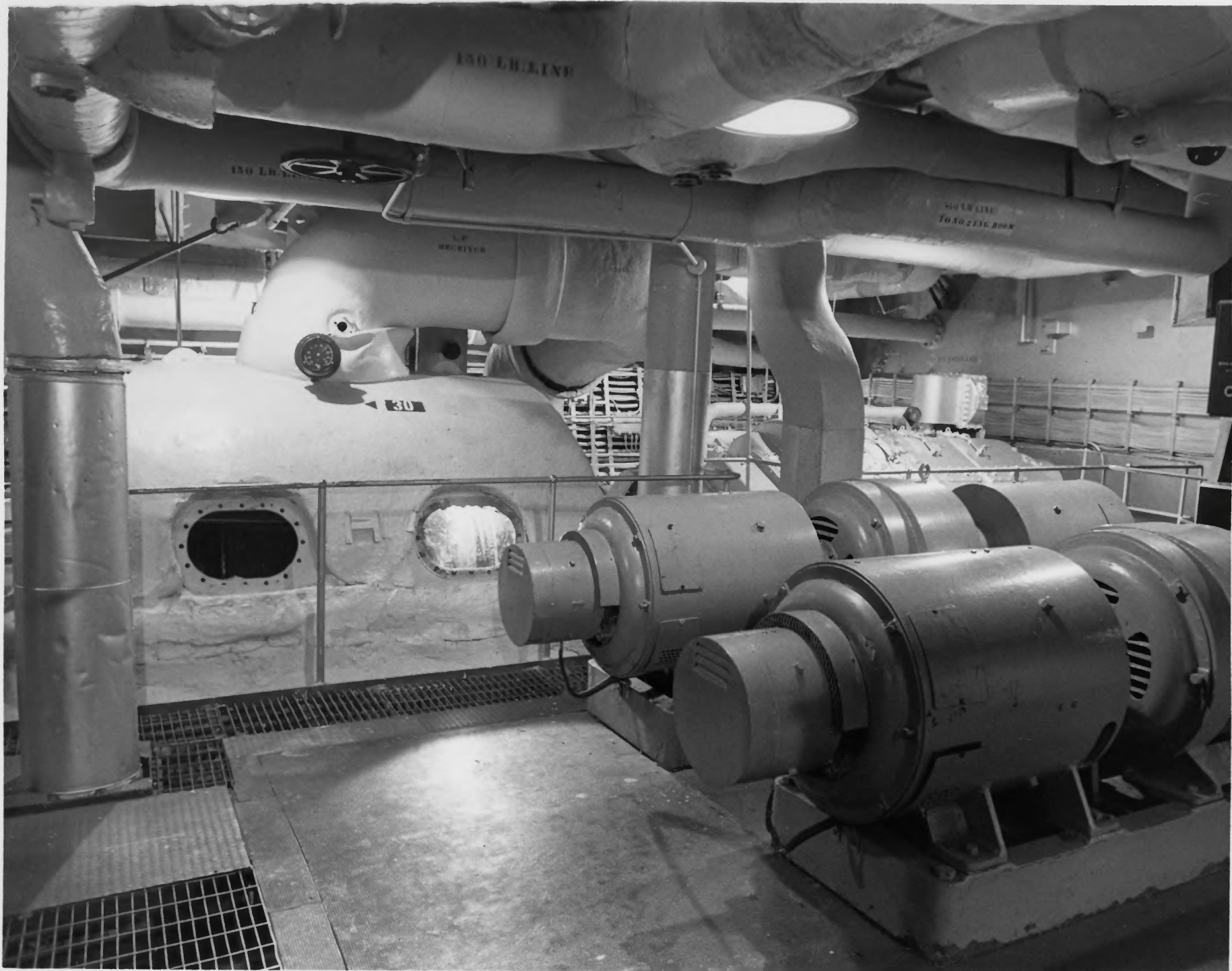
1. USS Massachusetts
2. Fall River, Massachusetts
3. USS Massachusetts Memorial Committee
4. 1984
5. USS Massachusetts Memorial Committee
6. 5" ammunition handling room
7. Photo #6



1. USS Massachusetts
2. Fall River, Massachusetts
3. USS Massachusetts Memorial Committee
4. 1984
5. USS Massachusetts Memorial Committee
6. Berthing in Chief Petty Officer's Quarters
7. Photo #7



1. USS Massachusetts
2. Fall River, Massachusetts
3. USS Massachusetts Memorial Committee
4. 1984
5. USS Massachusetts Memorial Committee
6. Entrance to engine room B-1
7. Photo #8



1. USS Massachusetts
2. Fall River, Massachusetts
3. USS Massachusetts Memorial Committee
4. 1984
5. USS Massachusetts Memorial Committee
6. Turbines and electric generators in Engine Room B-1
7. Photo #9



1. USS Massachusetts
2. Fall River, Massachusetts
3. USS Massachusetts Memorial Committee
4. 1984
5. USS Massachusetts Memorial Committee
6. Machine Shop
7. Photo #10