

PHILA. SK. 2290
8855 & 56
TURRET MOCK-UP
VIEW SHOWING GUN CHAMBER
1093-40-18

OPERATING
CONTROL STATION

CENTER GUN
LAMP

DOOR TO
CENTER GUN

CHAMBER

10" FIXED
LIGHT

RIGHT GUN

DOOR TO
POWER HOIST

OPERATOR

2" FIXED
LIGHT

IPA

ENIGMA, IN 22002

2000 & 56

THREAT, ROCK UP TO BLANK

THREAT WHEN UP TO BLANK'D

(1 TO 6 ADJACENT

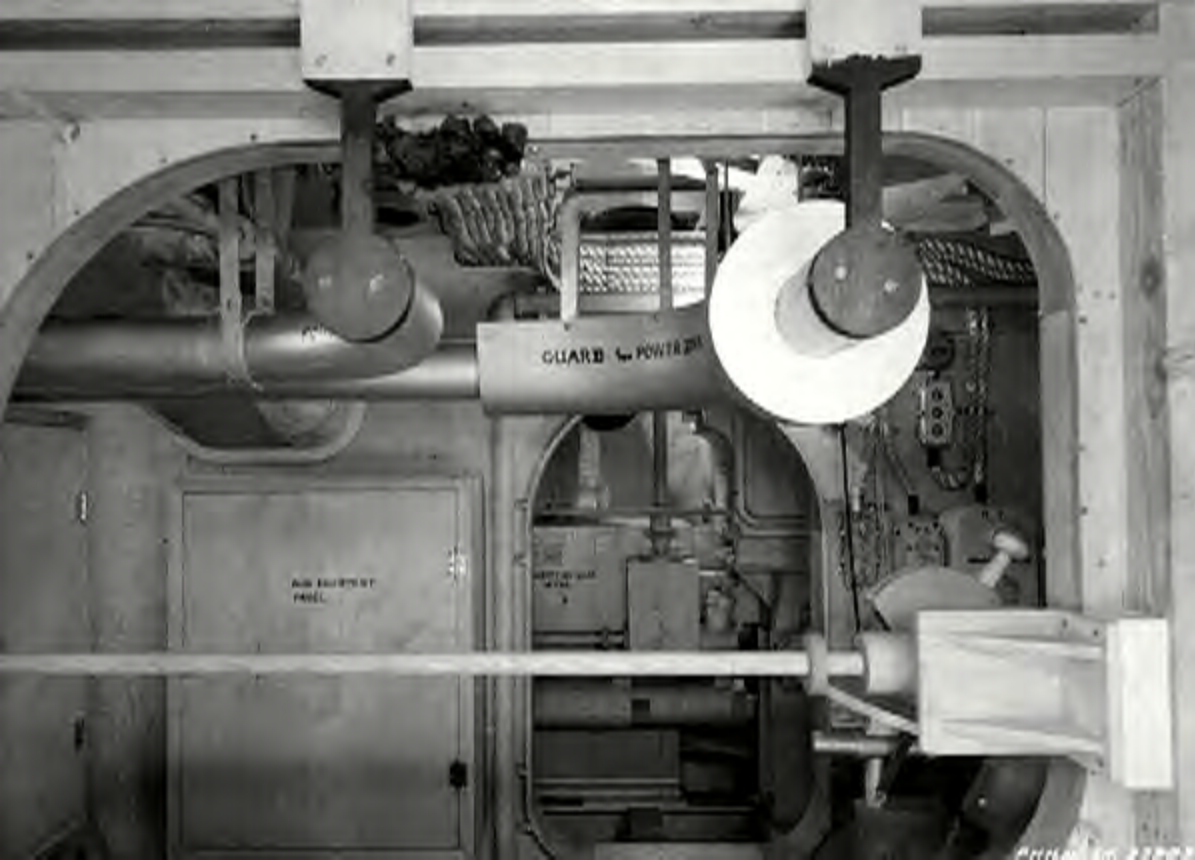
TO ONE ANOTHER.)

1003-20-5

ATION BRACKET.

REAR MOUNTING
BRACKET, U.S. 2

AVIA, 16, 22, 23
2022 2-26
TUNNEY, MUCK, 1/2
VIEW THROUGH POINTERS 3/20/26
LOOKING FORWARD
1073-40-20

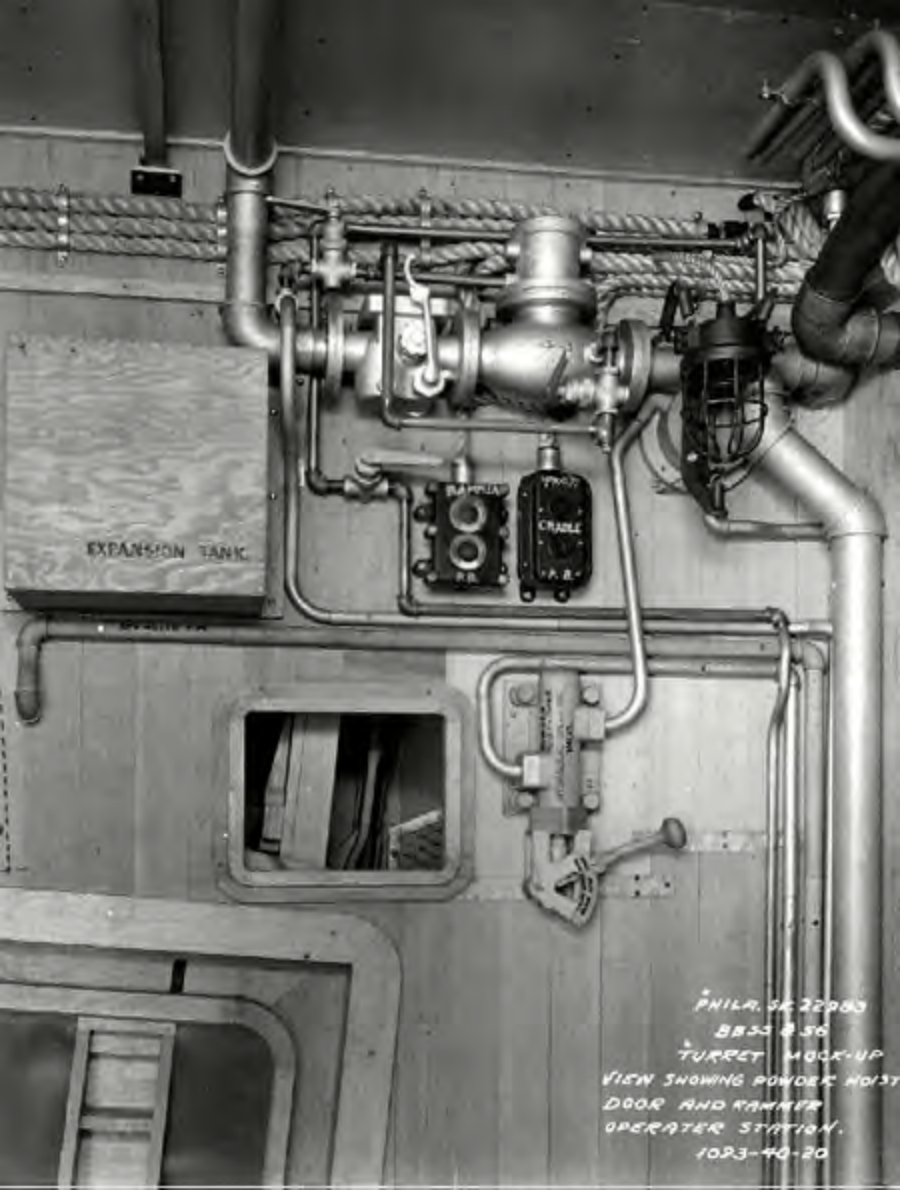


GUARD POWER

AIR EQUIPMENT
PANEL



ANLN, TN, 12983
883 & 54
TURRET MOCKUP, T.O. BATH
VIEW SHOWING LEFT HAND
SIDE OF BATH.
1083-40-0



EXPANSION TANK

RAPIER

CRABLE

PHILA. 5622883

8855 856

TURRET MOCK-UP

VIEW SHOWING POWDER HOIST

DOOR AND RAMMER

OPERATOR STATION.

1023-40-20

Cyl
Hyd
open
Close
Box



POWDER GEAR



... of hand operation.

Powder Gear
Control Lever



PHILA. 30, 22283

BB55 2 36

TURRET HOCK-UP

VIEW SHOWING POWDER HOIST
OPERATOR'S STATION, LOOKING
FORWARD.

1095-40-21



PHILA. SK. 22983
8855 & 56
TURBINE MOUNTING, T.O. 8007
VIEW SHOWING CABLE RACK
IN REAR OF TURBINE
1093-40-12

To Inert Gas
PORT AIR

← L.R. AIR

DOOR TO
POWDER HOIST OPERATOR.

CENTER
GUM.

DOOR FOR LIGHT
TEST-ONLY

Made in China 1942

DNIAA. SK. 22303

4035 & 56

TARGET HOOR-UP. T.S. 2000

FRONT VIEW OF T.S. 2000

(1 TO 6 ADJACENT

TO ONE ANOTHER.)

(023-23-3)



PHILN. 35. 22903
BASE & 26

TURRET MOUNTING, T.O. MOUNT
VIEW SHOWING RIGHT HAND
SIDE OF TURRET, REAR
1093-90-16

SPRINKLING
CONTROL STATION

2436

12-MC CONTROL
PANEL

FIXED
LIGHT

DOOR TO
CENTER GUN
CHAMBER
10' FIXED
LIGHT

JA.

PHILLY TR 22503
8855.246

TURRET AREA NO. 20. BOW
FRONT VIEW SR TO. B'LKH
(1 TO 6 ADJACENT TO
BNC SWITCHES)



PHILA. SK 22983
BD55 & 56
TURRET, MOCK-UP
GUN CHAMBER WITH CRAB
AND SPANNING TRAY IN
LOWERED POSITION.
1093-40-19



GENTLE
WAPPER 100

PHILA. EX. 22983
8055 & 56
TURRET MOCK-UP, T.O. BOOTH
VIEW SHOWING RIGHT HAND SIDE
OF BOOTH.
1093-40-7



TRANSFER PANEL TURRET #2

BATTLE ORDER
INDICATOR

NO. 1018
SINGLE 115V-60HZ

PHILA. SK. 22983
TURRET MOCK-UP, T.O. 8067
VIEW SHOWING TURRET
TRANSFER PANEL, BATTLE
ORDER INDICATOR, AND
TELEPHONE CUT-OUT
SWITCHBOYS.
1093-40-9

GUN ELEVATION INDICATOR
ELECTRICAL

Gun Layer's
Handwheel.

GUN LAYERS SEAT

AWLA 34 2223
272 & 76

TURKEY MACHINERY - ELECTRIC DEPT.

GUN LAYERS STATION

1942-43

703-4022



PHILA. IC. 22983
8855-856
TURRET MOCK-UP, CO. BOOTH.
VIEW SHOWING LEFT-HAND SIDE
OF TURRET-REAR.
1093-40-15

GUN EQUIPMENT
RINEL

POWER DRIVE PIPING

POWER-PIPING - TO 'A' END →

'A' END →

ENGINE BUILDUP

30-PIN MOTOR
1.44

STARTING MOTOR
1.44

PHILA 34-22893

8853 8-56

TURRET MOCKUP - ELEC. DECK

VIEW SHOWING TRAINER'S STATION

LOOKING FORWARD

1093-40-26