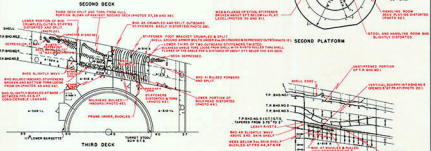
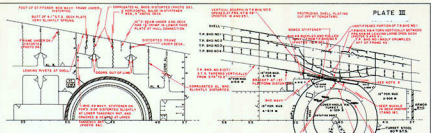


1968

1968

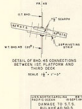
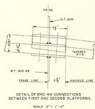
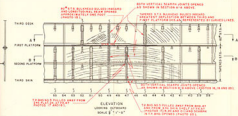
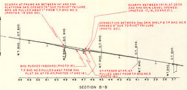
1968

1968



NOTES

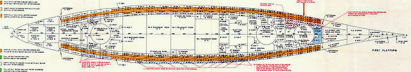
1. HEAD LINE DENOTES DAMAGED OR DISPLACED STRUCTURE.
2. LIGHT LINE DENOTES UNCHANGED STRUCTURE UNDETERMINED LINE INDICATES ORIGINAL POSITION OF MEMBER OR DISPLACED STRUCTURE.
3. PORTIONS OF SHIP WITHIN THE DIMENSIONED AREA WHICH WERE NOT SEEN SHOWN FROM SUPERVISION OF THE EXAMINER OR OUT OF VIEW AT SEA.
4. FOR DETAILS OF DAMAGE TO S.T.S. 1R BUSH SEE PLATE 2E.
5. DUE TO AGGRAVATION OF THE FORWARD PROTECTIVE SYSTEM (REAR) TOWER 1, DAMAGE INDICATED BY RED HEAD LINE OCCURRED FORWARD OF THIS DECK TO AVOID ALLOWANCE FOR THE EXISTENCE OF THE FORWARD PROTECTIVE SYSTEM (REAR) TOWER 1, S.T.S. 1R BUSH WERE BUILT UP (SEE DRAWING PLATE 2E).
6. DAMAGE TO SHIP SHOWN AS IT APPEARED ON ARRIVAL AT SEA. HARBOR PORTIONS OF PROTECTIVE SHELL PLATING WERE RE-REPAIRED BY DIVERS AT TOMBARDO OR GAINED AWAY AT SEA.



DESIGNED BY THE U.S. NAVAL ARCHITECTURE SOCIETY
 DRAWING NO. 101
 SHEET NO. 101

REMARKS
 1. THE SHIP IS A
 2. THE SHIP IS A

- LEGEND
- WHITE: UNFLOODED
 - ORANGE: FLOODED (WATER)
 - GREEN: FLOODED (AIR)
 - BROWN: FLOODED (OIL)
 - RED: FLOODED (GAS)
 - YELLOW: FLOODED (STEAM)
 - BLUE: FLOODED (OTHER)



- ORANGE: FLOODED (WATER)
- GREEN: FLOODED (AIR)
- BROWN: FLOODED (OIL)
- RED: FLOODED (GAS)
- YELLOW: FLOODED (STEAM)
- BLUE: FLOODED (OTHER)

