

SCALE IN FEET
0 10 20 30 40 50 60 70 80 90 100

NO. 433
BATTLESHIP
U.S.S. COLORADO
DESIGNED BY
CHARLES A. WHEELER
BOSTON, MASS., U.S.A.

NO. 45 COLORADO
NO. 46 MARYLAND
NO. 48 WEST VIRGINIA
Arrgt. as of Dec. 1941

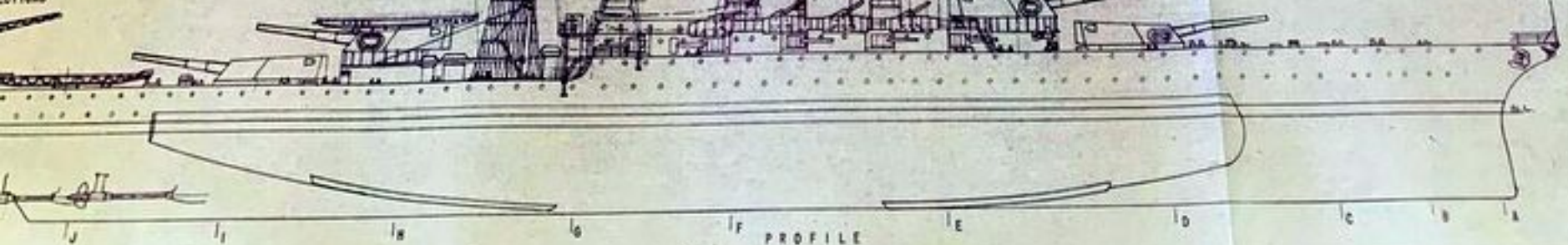
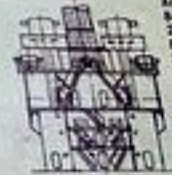
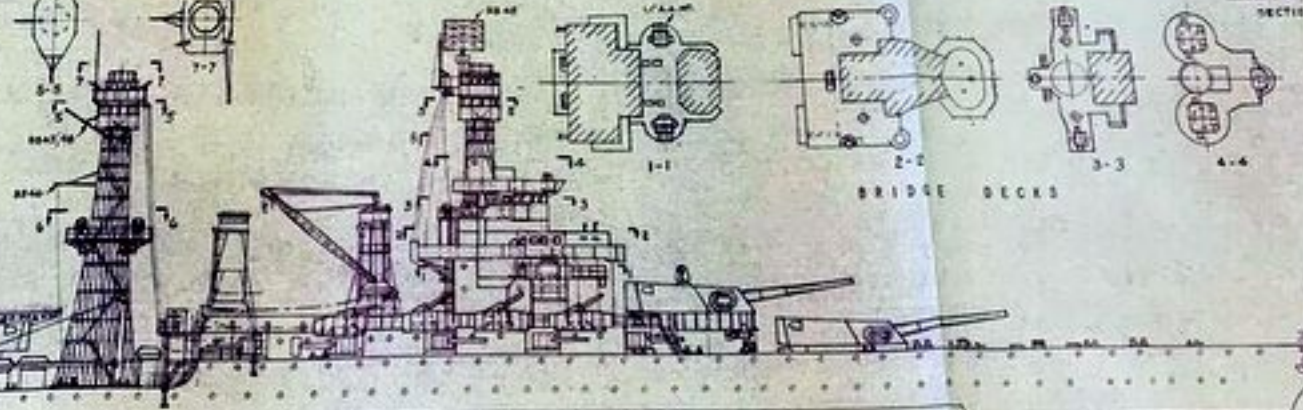
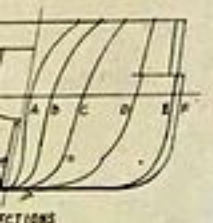
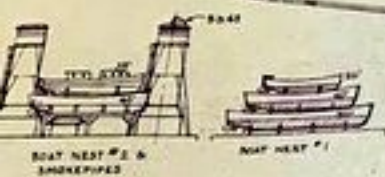
Length (o.s.) 624'-0"
Beam 100'-2"
Draft 32'-6"
Displ. 32,850 Tons
35,000 SHP 27 knots

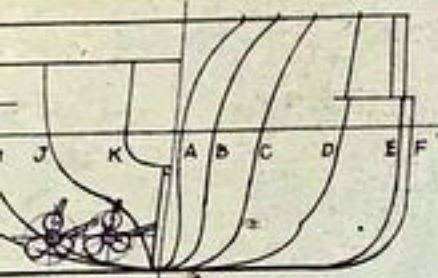
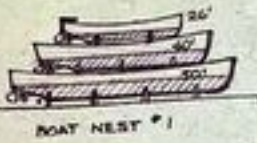
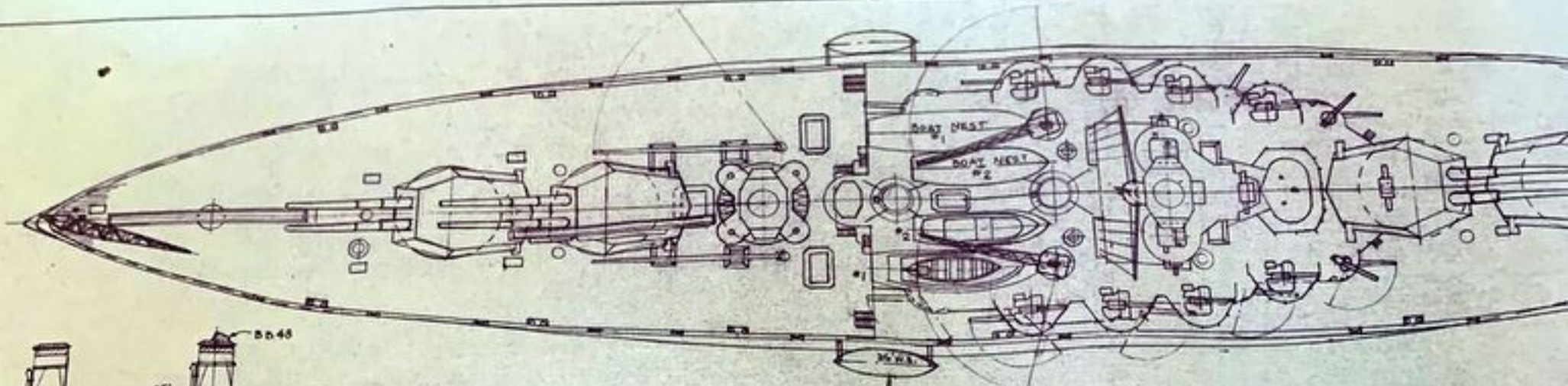
Armament:
8-16" 45 Cal.; 12-5" 51 Cal.; 8-5"
25 Cal. D.P. Guns; 2-1" Quad. M.C.
8-10 50 Cal. M.C.'s; 2 Catapults
2-4 Seaplanes.

Built 1921-23, Rebuilt 1927-30
Complement 1480

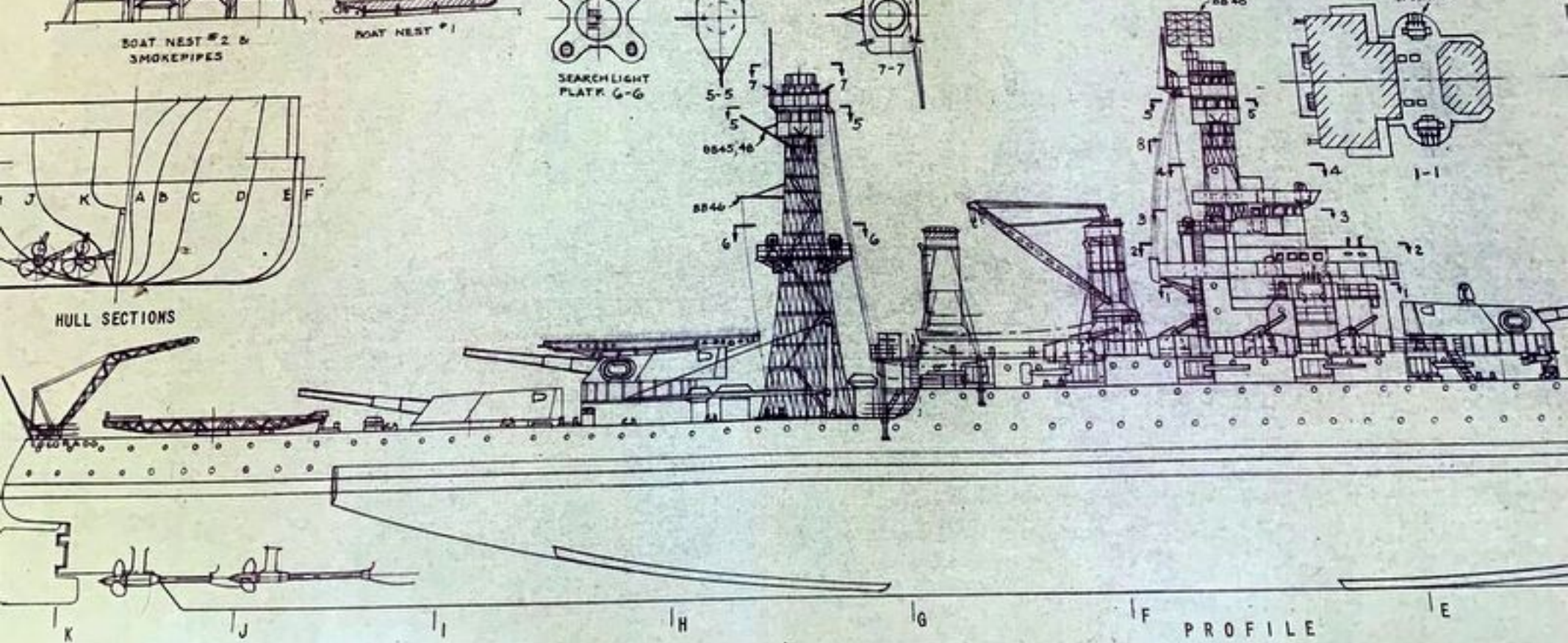
PLAN AT WATER-LINE

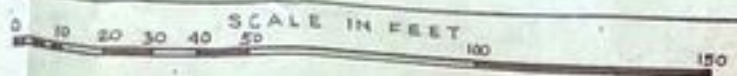
PLAN





HULL SECTIONS





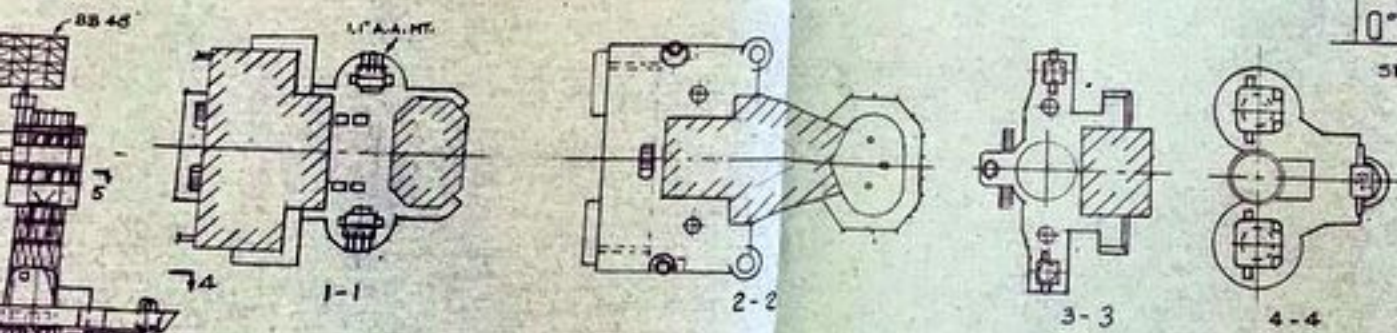
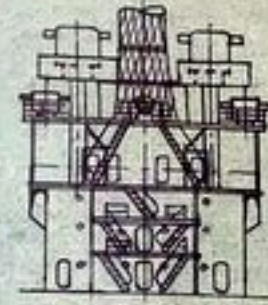
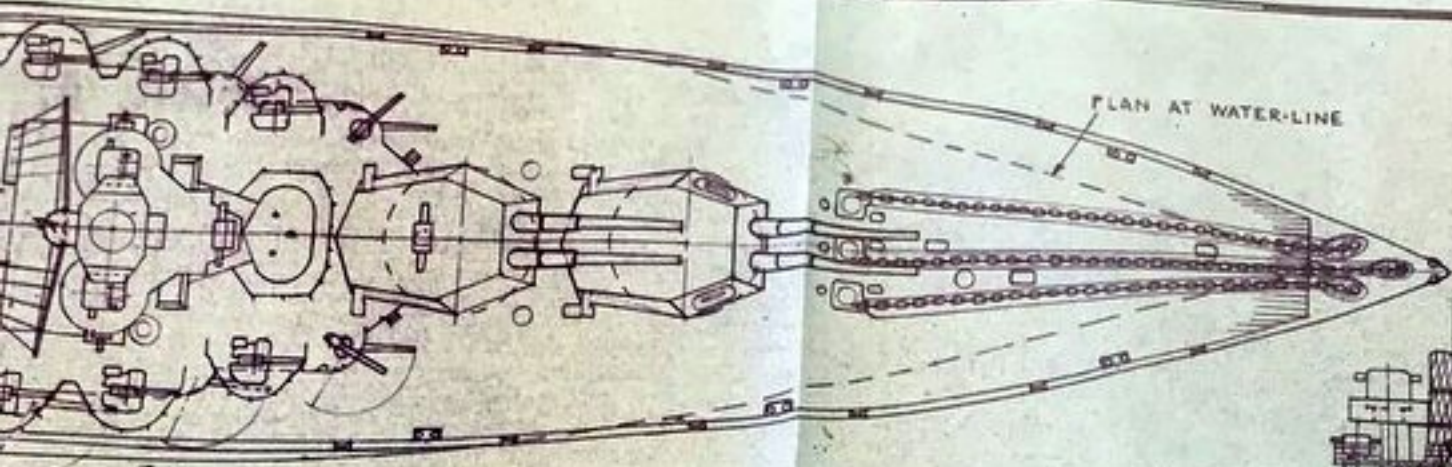
DWG. 433
 BATTLESHIP
 U.S.S. COLORADO
 WARSHIP DRAWINGS
 EDWARD H. WISSENER
 407 N. 25th St., Pennside, Reading, Pa.

BB 45 COLORADO
 BB 46 MARYLAND
 BB 48 WEST VIRGINIA
 Arrgt. as of Dec. 1941

Length (o.a.) 624'-0"; Beam 100'-2"
 Draft 32'-6"; Displ. 32,850 Tons
 35,000 SHP 21 Knots

Armament:
 8-16" 45 Cal.; 12-5" 51 Cal.; 8-5"
 25 Cal. D.P. Guns; 2-1.1" Quad.Mts.
 8-10 50 Cal. M.G.'s. 2 Catapults
 2-4 Seaplanes.

Built 1921-23, Rebuilt 1937-38
 Complement 1480



BRIDGE DECKS

