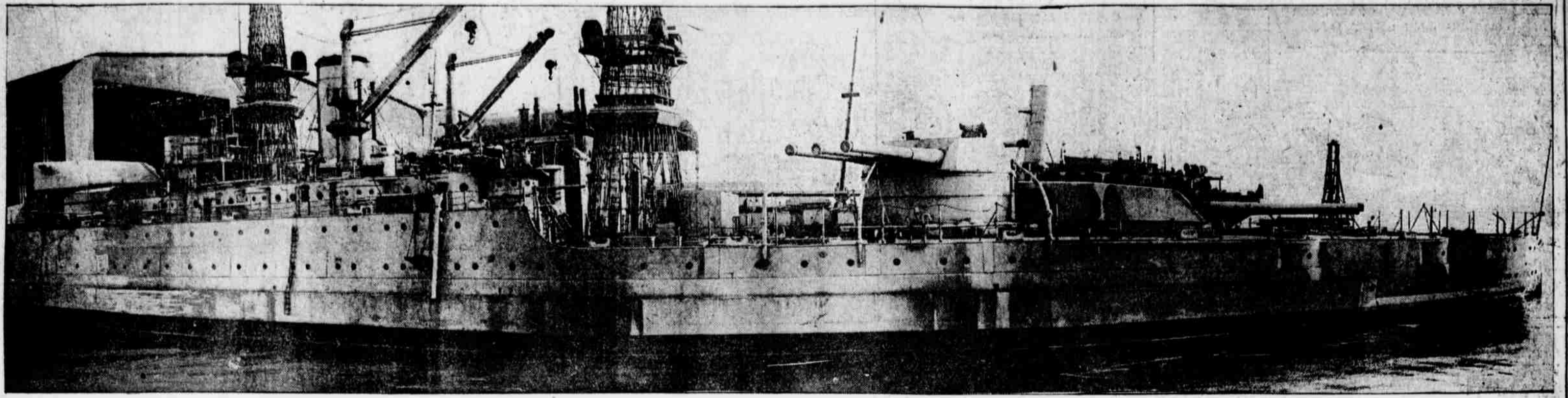


Heaviest Fighting Craft Afloat, the Superdreadnought Idaho : Various Views of the Day



THE SUPERDREADNOUGHT U. S. S. IDAHO, the greatest and heaviest battleship in the United States navy and the world's most powerful fighting craft. The Idaho was launched in July, 1917, at the New York Shipbuilding Company's yard in Camden. The titan is now ready for the final fittings at the Philadelphia Navy Yard.



Atlantic Photo Service...

MISS MARY GARDEN and a wolfhound found in a German dugout during the drive on Sedan. The dog was presented to the singer by Captain Maurice Helm, on behalf of the negro band attached to the 350th Heavy Field Artillery, recently returned and awaiting demobilization.



From Int. News...

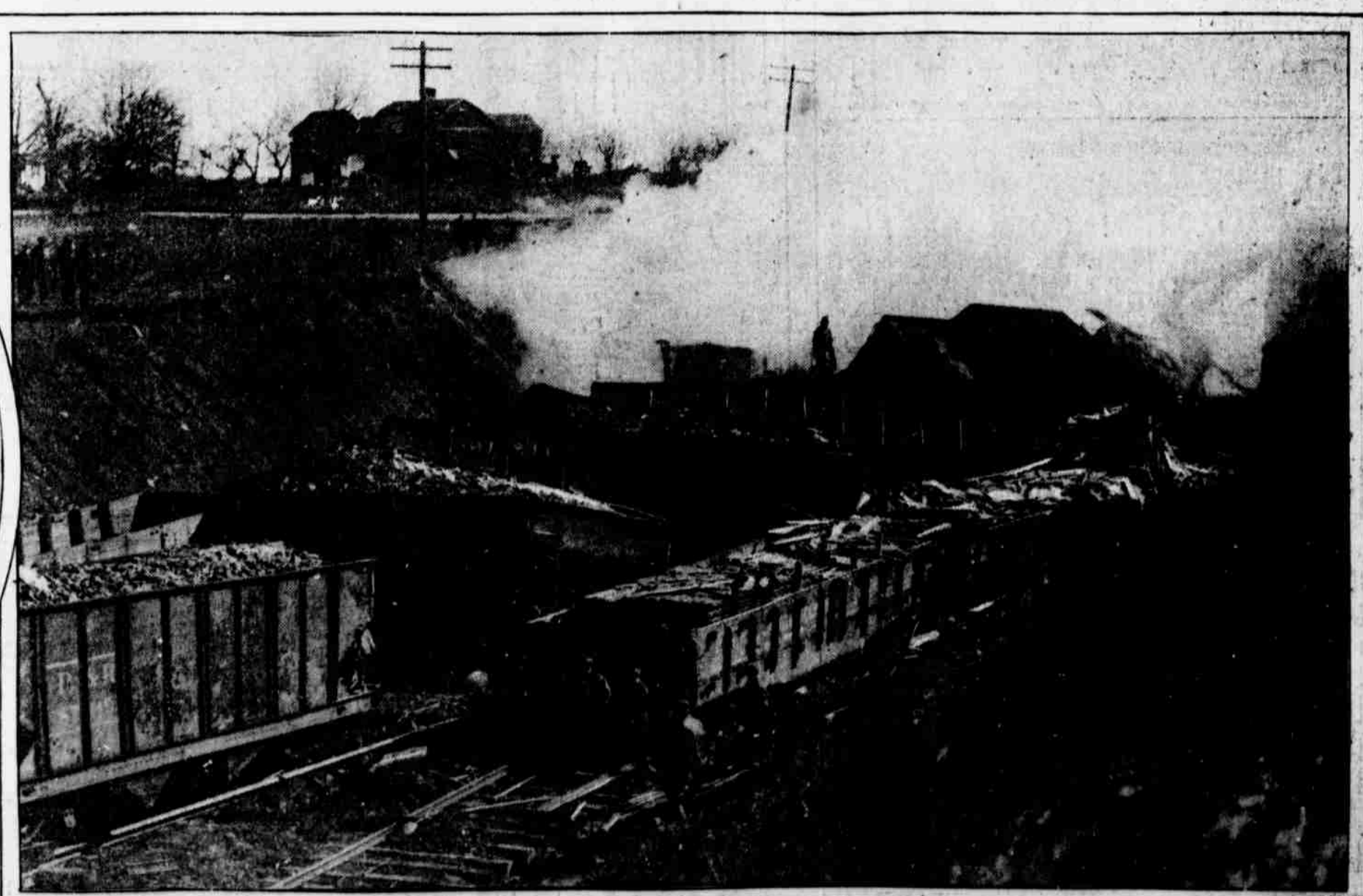
HOW UNCLE SAM treats his prisoners of war. German prisoners in an American camp watching a rugby football game between rival teams of captives of war.



A SURE SIGN OF SPRING—The boy with the top makes his appearance on the city pavements.



MISS LOUISE HOAR, daughter of Mrs. Frederick H. Gillett and stepdaughter of the new Speaker of the House, at the Free Milk for France Mardi Gras ball in Washington. Miss Hoar is a granddaughter of the late Senator Hoar, of Massachusetts.



THE FORCE OF IMPACT in the rear-end collision of freight trains on the Trenton cut-off of the Pennsylvania Railroad at Heaton, just north of Willow Grove, lifted the heavily loaded coal cars from the track and set them at right angles to the rails. Fire from the wreckage destroyed the Davisville bridge overhead. The abutment is in view at the right.