

THE SMART BOY

The boy must be strong before he can be smart. The sick boy has his body to attend to first, even though his brain goes a-begging.

Scott's Emulsion gives strong healthy bodies to little boys and girls. By good feeding and gentle stimulation it paves the way for bright and happy minds.

Scott's Emulsion, then the strength of good health, then the bright developing mind—that is often the progress of a weak child.

Little daily doses of Scott's Emulsion give strength to weak children and fatten the thin ones.

It is peculiarly adapted to children's needs.

We'll send you a sample free upon request. SCOTT & BOWNE, 409 Pearl Street, New York.

Going East?

IF SO, WHY NOT USE THE ONLY DOUBLE TRACK RAILWAY between the Missouri River and Chicago. THREE TRAINS DAILY VIA THE SOUTHERN PACIFIC UNION PACIFIC AND CHICAGO & NORTHWESTERN RYS.

Overland Limited. Vestibuled. Leaves San Francisco at 10:00 a. m. The most Luxurious Train in the World. Electric Lighted Throughout. Buffet smoking cars with barber and bath. Booklovers Library, Dining Cars, Standard and Compartment Sleeping Cars and Observation Cars.

Eastern Express. Vestibuled. Leaves San Francisco at 6:00 p. m. Through Standard and Tourist Sleeping Cars to Chicago. Dining Cars. Free Reclining Chair Cars.

Atlantic Express. Vestibuled. Leaves San Francisco at 9:00 a. m. Standard and Tourist Sleepers. Personally Conducted Excursions Wednesdays, Thursdays and Fridays. The best of everything.

CREX Grass Rugs. Beautiful new stock of the serviceable "Crex" rugs and matting now open.

Porter Furniture Co. YOUNG BUILDING.

"NEW TODAY"

Ex. S. S. Alameda. All kinds of 1904 nuts, fresh California Fruits and Vegetables in season. Cranberries, Frozen Oysters, Sunrise Butter, and big assortment of

Staple and Fancy Groceries. Tel. Blue 2511. Prompt Attention.

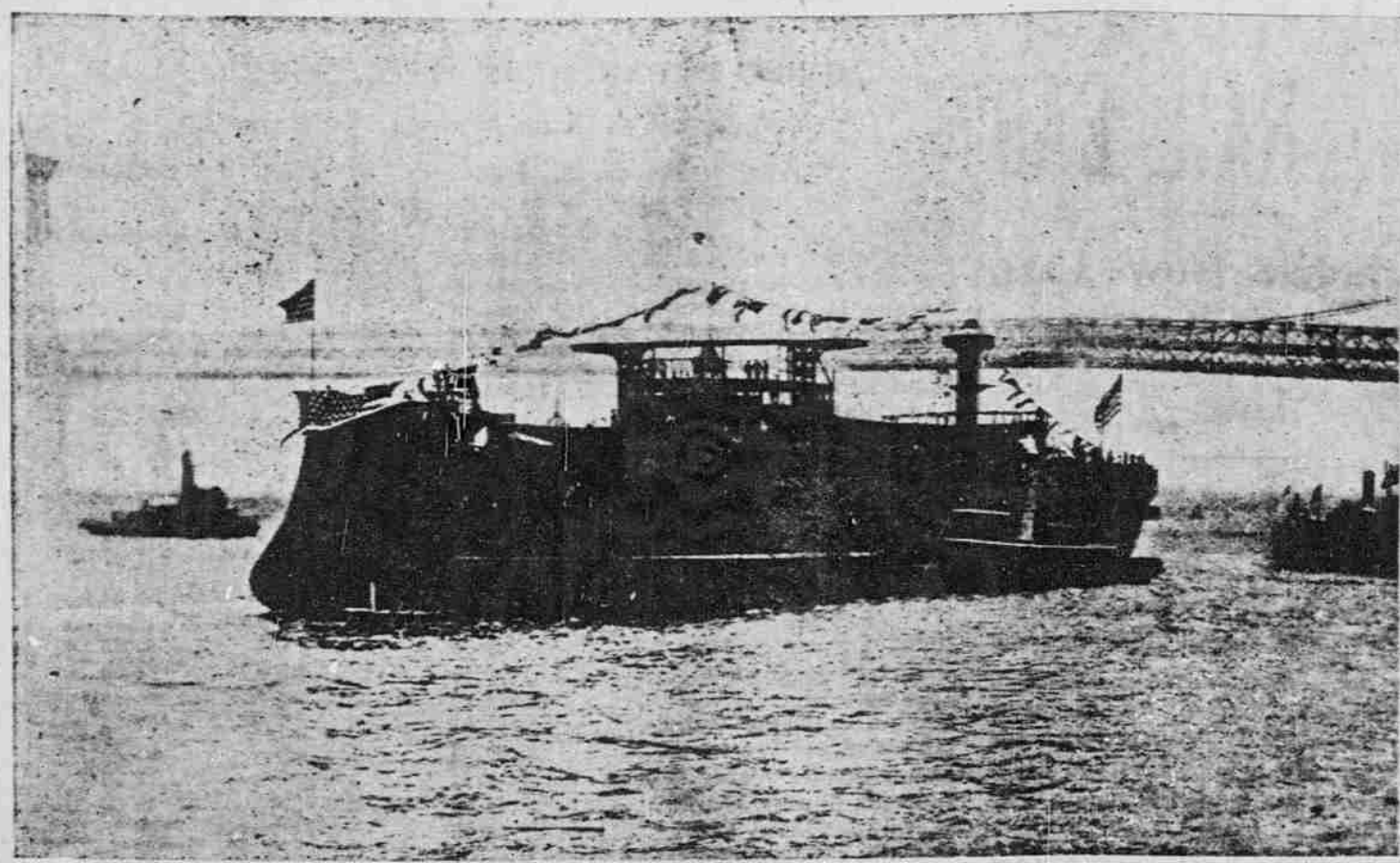
C. Q. Yee Hop & Co. Beretania and Alakea Sts.

OAHU ICE & ELECTRIC CO. Ice delivered to any part of the city. Island orders promptly filled. Tel. Blue 8151. P. O. Box 600. Office: Kewalo.

HAWAII SHINPO SHA. THE PIONEER JAPANESE PRINTING OFFICE. The publisher of Hawaii Shinpo, the only daily Japanese paper published in the Territory of Hawaii.

Mrs. E. M. Taylor FLORIST. Alexander Young Building. Fresh flower seed just arrived by S. S. Alameda.

EAGLE CLEANING AND DYEING WORKS. Fort Street, opposite Star Block. LADIES' AND GENTS' CLOTHING CLEANED AT LOWEST PRICES.



LAUNCHING THE "CONNECTICUT," THE LARGEST BATTLESHIP IN THE UNITED STATES NAVY.

The battle-ship "Connecticut," the most powerful vessel in the United States navy, was successfully launched September 29 at the Brooklyn Navy Yard. The "Connecticut" has a maximum displacement of 17,700 tons, is 456.4 feet over all, with a draught of 24.6 feet, and an estimated speed of eighteen knots.

WILLIAMS, DIMOND & CO.'S LATEST SUGAR CIRCULAR

San Francisco, Oct. 28, 1904. Sugar.—No changes have since occurred in the local market or for export to Alaska and Hawaii, prices previously advised still being in force.

London Beets.—Sept. 16th, 10s 7 1-2d; 17th, 10s 8 1-4d; 19th and 20th, 10s 9d; 21st and 22nd, 10s 11 1-4d; 23rd, 11s 3-4d; 24th, 11s 1 1-2d; 26th, 11s; 27th, 11s 1 1-2d; 28th to 30th, 11s 3d; Oct. 1st, 11s 6d; 3rd, 11s 4 1-2d; 4th, 11s 3d; 5th, 11s 3 3-4d; 6th, 11s 2 1-4d; 7th, 11s 3-4d; 8th, 11s 2 1-4d; 10th and 11th, 11s 3-4d; 12th, 11s; 13th and 14th, 10s 10 1-2d; 15th to 19th, 11s; 20th and 21st, 11s 3-4d; 22nd and 24th, 11s; 25th, 10s 10 1-2d; 26th and 27th, 11s; 28th, 11s 3-4d.

New York Refined.—Quotation 5.15c net cash in barrels, equivalent to 5.10c net cash in bags, established Sept. 1st, continued in force until Oct. 3rd, on which day a decline of ten points occurred, followed by an additional decline of ten points Oct. 5th, and again ten points Oct. 18th, while on Oct. 25th an advance of five points occurred, establishing a price on that date now maintained of 4.90c net cash in barrels, equivalent to 4.85c net cash in bags.

London Cable.—Oct. 22nd quotes Java 96 degrees test 12s 3d. Fair refining 11s against 9s 9d and 8s 6d respectively—same date last year. November beets 1s 14 1-4d against 8s 1-4d—corresponding period previous year.

Latest Statistical Position.—Willett & Gray report U. S. 4 ports in all hands, estimated Oct. 19th, 152,105 tons against 138,193 tons—same date last year. 6 ports Cuba, estimated Oct. 18th, 5500 tons against 133,000 tons—corresponding period previous year. United Kingdom, estimated Oct. 15th, 68,000 tons against 114,064 tons—corresponding period previous campaign. Total stocks in all the principal countries, by cable Oct. 20th, at latest uneven dates, 788,605 tons against 1,237,257 tons; decrease from last year 438,652 tons.

Eastern and Foreign Markets.—A quiet, firm market for raws has been maintained throughout the period under review. The situation in some respects is peculiar, the offerings of cane sugars having been on a very moderate scale and even Demeraras on not attract any particular attention. Cuba at this juncture exerts no active influence on the market, the crop there being virtually exhausted, while Javas have been practically absorbed, the only unsold near-by cargo of Javas being held for 11s 10 1-2d c. i. f. equal to 4 5-16c duty paid. Neither buyers or sellers evince any anxiety to consummate transactions and the present inactivity is likely to continue until the advent of the new Cuban crop.

Requirements are well supplied for immediate requirements and the customary curtailment of refined at this season of the year has begun. A recent storm in Cuba occasioned no damage to the cane fields, while on the contrary, the abundant rains which fell proved quite beneficial and the prospects are favorable for some increase over last year's production. The new Louisiana crop is still green and only one-quarter of the factories are grinding, according to information recently received. New crop prospects are favorable and the out-turn is estimated at 340,000 tons. Quotations in Europe have continued to decline to a slight extent throughout the present month, but a firmer tendency has been exhibited latterly. Mr. F. O. Licht's estimate of the present European beet crop was announced 15th inst. as 5,120,000 tons, which represents a decline of 732,000 tons from the results of the preceding crop.

ed comparatively little influence upon prices, though naturally impelling buyers to move cautiously pending more definite information regarding next crop prospects. Until then we see nothing to change markets one way or the other as to prices or demand.

Rice.—New crop is coming in, but thus far market quotations are unchanged. A fair demand from all over the country is keeping prices very steady and some grades are held for higher figures.

A dull market for refined has ruled since our last review has ruled, the trade adopting a strictly hand-to-mouth policy and an easier tone is in evidence, according to latest mail advices from New York under date of the 22nd inst.

Charters.—Transactions for grain since our last review have continued on a limited scale and rates are more or less nominal at 21s 3d orders from this port and 26s to 28s 3d orders from the North, and owing to the depression in grain freight, rates for lumber have again declined, last charter for Sydney being at 28s 9d January loading, and 31s 3d Melbourne, Adelaide or Port Pirie.

Exchange.—London demand, \$4.87 1-4; London 60 days, \$4.84 1-2; New York regular, 5c; Telegraphic, 7 1-2c. Coffee.—Stock of Hawaiians in first hands today is 3738 bags. We quote: Fancy, 13c to 14c; prime, 11 1-2c to 12 1-2c; good, 10c to 11c; fair, 8c to 9c; inferior, 6c to 7 3-4c; peaberries, 9 1-2c to 10 1-4c.

Market for Hawaiians remains quiet and prices unchanged—largely nominal for all grades held above 11 1-2c. The general position of coffee is a shade weaker (for Brazils), but milds have softened even more and on dull business for all kinds except the cheapest. Interest is now centered upon the result of the December flowering in Brazil, which should quite fairly indicate the size and character of the coming crop. The present crop is generally conceded to be nine to ten millions of bags and has been coming into sight very rapidly so far sufficient to increase available supply beyond all former figures—14,400,000 bags. This fact, however, was expected and has exert-

ARRIVALS. Sept. 17.—S. S. Argyle, Honolulu. " 19.—S. S. Sonoma, Sydney via Honolulu. " 22.—S. S. Enterprise, Hilo. " 22.—S. S. Gaelic, Hongkong, Yokohama and Honolulu.

Underwood Typewriter Gets Grand Prize at St. Louis

Advertisement for Underwood Typewriter. Includes a circular logo for the Commercial Pacific Cable Company and a testimonial from a user who received the typewriter via cablegram. The testimonial says: 'The following cablegram received "via Commercial Pacific Cable" at 3:45 a.m. From 13 New York To Pearl and Honolulu. Underwood typewriter received grand prize St. Louis.'

That visible typewriting machines are growing in popular favor is an undoubted fact. It is rarely one can find a person who is not willing to admit that visible writers are time and labor savers and they appeal particularly to the large number of typewriter users who are not professionals or experts and who as a consequence can work to much greater advantage by being able to see what they are doing.

Pearson & Potter Co., agents here for the Underwood received recently a shipment of 13 machines all of which were disposed of within three days after arrival.

The fact that the Underwood received the Grand Prize at St. Louis shows that it is considered the leading typewriter of the world by the best experts and explains why it is that its popularity is so great that the factory have been unable to keep up with their orders.

Pearson & Potter Co., Ltd. 931 FORT ST. AGENTS FOR HAWAIIAN ISLANDS.

SPORTS PUNAHOU VS. HIGH SCHOOL

This afternoon at 3:30 the eleven wearers of the moleskin representing the High School and Oahu College will face one another on the Punahou field.

Both teams will present their strongest "line ups" and neither can offer an excuse if beaten, as they are both in good shape. The Punahou team have improved since their game with the Kam school and are playing in much better form.

"Dick" Ahrens will captain the college boys while Lightfoot will act in the same capacity for the High School team.

On account of their decisive victory over the Kam team the Punahous are slight favorites. The High School boys have received some good coaching from "Ben" Clark and should give a good account of themselves.

The two teams will face each other as follows:

Lineup table for Punahou vs. High School. Columns include names and positions for both teams.

CARRIAGES VS. THE TWILIGHTS

An exciting game of baseball is billed to take place on Sunday at 10 a. m. between the Hawaiian Carriage Manufacturing Co.'s baseball team and the Twilights. The Hawaiian Carriage team has only lost two games, during the whole season, and expects to defeat the Twilights, and add another to their victory. Should the Hawaiian Carriage team win, they are champions. Bob Roe will catch for the Hawaiian Carriage team.

The Hawaiian Carriage team will line up as follows: Bob Roe, c.; Tom Honan (Capt.), p.; Frits Carlson, 1b.; Ben Dalger, 2b.; C. W. Zeigler, 3b.; H. Rodrigues, cf.; H. Honan, ss.; J. Bento, lf.; Bananas Fernandes, rf.; subs., McCauley, Jno. Honan; Alex. Swanson, mascot.

CRICKET MATCH ON MAKIKI FIELD

A cricket match will be played on the Makiki grounds today at 2 p. m., teams to be picked from the following: R. Anderson, S. Beardmore, J. H. Catton, R. R. Catton, J. L. Cockburn, A. R. Hatfield, H. L. Herbert, R. A. Jordan, S. Jordan, A. Jordan, C. P. Morse, W. L. Stanley, T. Gill, A. Tullett, J. R. M. Maclean, R. de B. Lanyon, J. H. Harrison, O. C. Read, Mr. Mytton, J. M. Tucker, D. Center, E. Martin, T. Martin, B. F. Beardmore, Mr. Schultz, Mr. McAuliffe, Mr. Croall.

Agents for the Oceanic Steamship Company of San Francisco, Cal. AGENTS FOR THE Scottish Union & National Insurance Company of Edinburgh. W. M. G. Irwin & Co., Ltd. Associated Assurance Company of Munich & Berlin. Alliance Marine & General Assurance Co., Ltd., of London. Royal Insurance Company of Liverpool, Alliance Assurance Company of London. Rochester German Insurance Company of N. Y.

Bishop & Co., Bankers

ESTABLISHED IN 1852. BANKING DEPARTMENT. Transact business in all departments of banking. Collections carefully attended to. Exchange bought and sold.

Commercial and Travelers Letters of Credit issued on the Bank of California and N. M. Rothschild & Sons, London. Correspondents: The Bank of California, Commercial Banking Co., Sydney, Ltd., London.

Drafts and cable transfers on China and Japan through the Hongkong and Shanghai Banking Corporation and Chartered Bank of India, Australia, and China.

Agents for the sale of Travelers Checks of the American Express Company.

Interest allowed on term deposits at the following rates per annum, viz: Seven days' notice, at 2 per cent. Three months, at 3 per cent. Six months, at 3 1/2 per cent. Twelve months, at 4 per cent.

TRUST DEPARTMENT. Act as Trustees under mortgages. Manage estates, real and personal. Collect rents and dividends. Valuable papers, wills, bonds, etc., received for safe keeping.

ACCOUNTANT DEPT. Auditors for corporations and private firms. Books examined and reported on. Statements of affairs prepared. Trustees on bankrupt or involved estates.

SAVINGS DEPARTMENT. Deposits received and interest allowed at 4 1/2 per cent per annum, in accordance with rules and regulations, copies of which may be obtained on application.

INSURANCE DEPARTMENT. Agents for FIRE, MARINE, LIFE, ACCIDENT AND EMPLOYERS' LIABILITY INSURANCE COMPANIES. Insurance Office, 924 Bethel Street.

Advertisement for Hawaiian Trust Co., Ltd. 'Often a Case Of locking the stable door after the horse is stolen' with people who have valuable papers, jewelry, silverware, etc. When not in use these articles should be kept in a place of security. One of our safe deposit boxes costs only \$5 a year or 50c a month. Hawaiian Trust Co., Ltd. Fort Street.

WM. G. IRWIN & CO., LTD. Wm. G. Irwin, President and Manager. John D. Spreckels, First Vice-President. W. M. Giffard, Second Vice-President. H. M. Whitney, Jr., Treasurer. Richard Ivers, Secretary. A. C. Lovekin, Auditor. Sugar Factors and Commission Agents.

AGENTS FOR THE Oceanic Steamship Company of San Francisco, Cal. AGENTS FOR THE Scottish Union & National Insurance Company of Edinburgh. W. M. G. Irwin & Co., Ltd. Associated Assurance Company of Munich & Berlin. Alliance Marine & General Assurance Co., Ltd., of London. Royal Insurance Company of Liverpool, Alliance Assurance Company of London. Rochester German Insurance Company of N. Y.

WM. G. IRWIN & CO., LTD. AGENTS FOR Western Sugar Refining Co., San Francisco, Cal. Baldwin Locomotive Works, Philadelphia, Pa. Newall Universal Mill Co., Manufacturers of National Cane Shredder, New York, N. Y. Paraffine Paint Company, San Francisco, Cal. Ohlandt & Co., San Francisco, Cal. Pacific Oil Transportation Co., San Francisco, Cal.

JAPANESE Groceries and Provisions. Manufacturers of Straw Hats. IWAKAMI & CO. HOTEL STREET.

Honolulu Candy Co. New England Bakery.

J. OSWALD LUTTED, Hotel Street. Manager.

Lovejoy & Co. Liquor Dealers. Nuuanu and Merchant Sts. Phone Main 308.