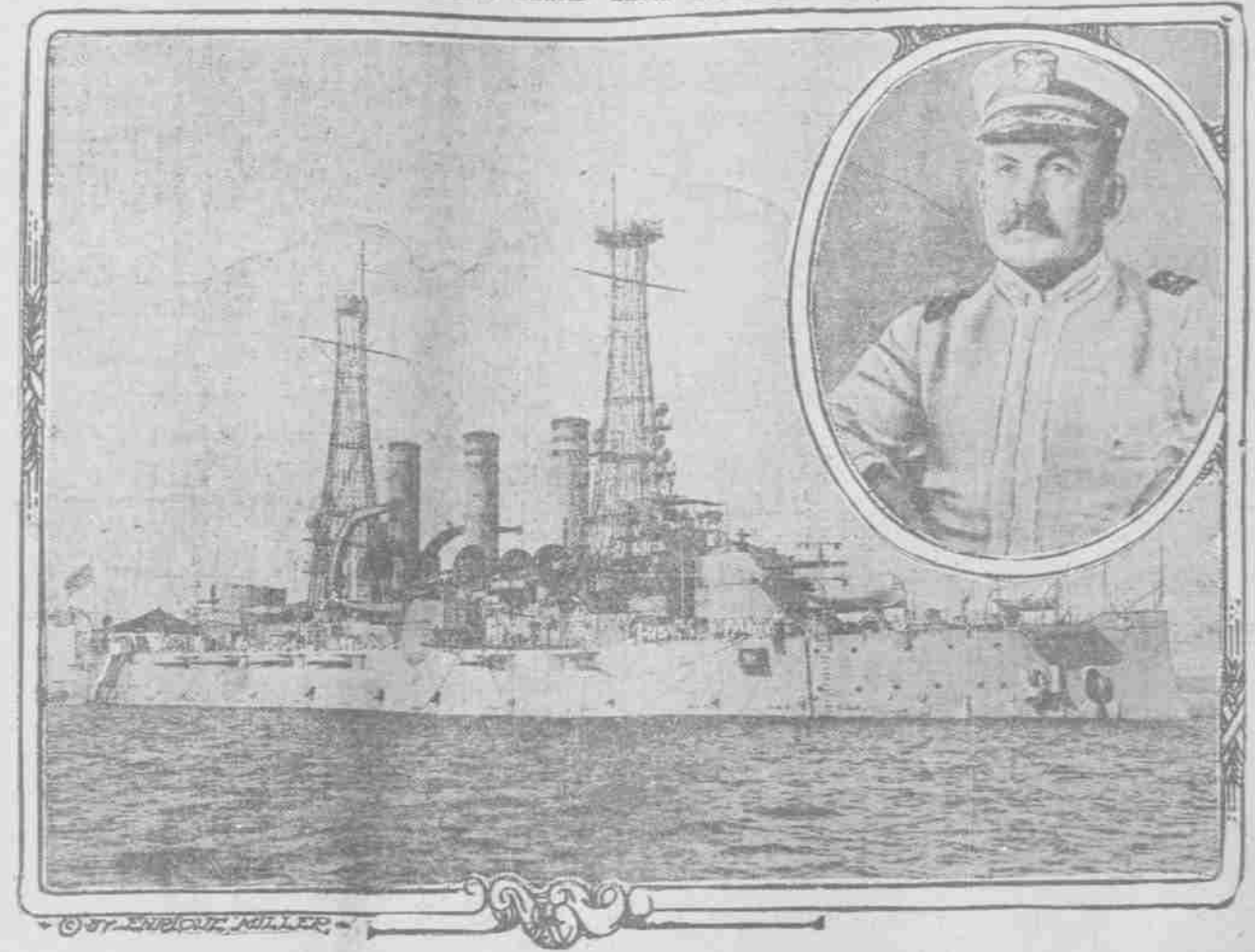


PICTURES OF CRETANS OF 2887 B. C. MEXICANS ARE BONAER LAW IS DISTURBING REFUGEES IN PARIS ELEMENTS IN PARIS FLETCHER ON JOB; WASHINGTON EASY

REAR ADMIRAL FLETCHER AND HIS FLAGSHIP, THE RHODE ISLAND



"Black Magic" Thrives in London New Expose Shows Many Followers

LONDON, Eng., Jan. 10.—"Black magic" or the art of incantation, is still regularly practiced in London, revelations have just brought to public notice. Where the Druids muttered their weird chants 2000 years ago, and where the greatest city in the world now stands, three societies flourish, composed of those who believe that spiritual or supernatural powers can be acquired by the repetition of certain formulas.

FAMOUS MEN SMUGGLE OLD MASTERPIECES

Sir Joshua Reynolds, Sir Robert Walpole and Gavin Hamilton Implicated. DISCLOSURES MAKE GREAT SENSATION. LONDON, Eng., Jan. 10.—Astonishing light is thrown today on the manner in which old masters were smuggled out of Italy. The disclosure involves some famous names, notably Sir Joshua Reynolds.

Rev. James Baikie Describes Wonderful Civilization of Ancestors of Europe.

WOMEN'S DRESS THEN WAS TODAY'S STYLE

WASHINGTON, D. C., Jan. 10.—Four thousand years ago, the women of Crete were wearing Parisian styles, with big hats, high-heeled shoes and tight laced corsets; the Cretans had built houses and methods of sanitation that far surpassed anything known in modern civilization until the last 50 years, and they had invented the written word, although historians until recent times, had conferred this distinction upon the Phoenicians, who did not appear in modern history until 1800 years later.

It has been in Crete that exploration and discovery have led to the most striking illustrations of many of the statements in the legends and traditions, and have made it practically certain that much that has been considered more romantic fable represents, with of course, many embellishments of fancy, a good deal of historical fact.

The discovery which will doubtless prove to be of greater importance than any other since the discovery of the clay tablets inscribed with inscriptions in the unknown script of the Minoans, was discovered in a tablet written in hieroglyphs, but the rest were in linear script, a highly developed form, with regular divisions between the words and a regularity scarcely surpassed by any later form of writing.

It is remarkable that a man with such truly great attainments as a scientist should have been able to go through the Naval Academy at Annapolis, yet such is the case. He was introduced to Japan to half-nickname. He was born in Oskaloosa, Ia., on November 21, 1855, which was Friday.

English Are Losing Chinese Trade Americans and Germans Take Lead

LONDON, Eng., Jan. 10.—English newspaper correspondents in China are declaring the fact that American, German and Japanese are losing the hold they had on the Chinese market. In a recent letter to his London paper a correspondent writes that the English merchants are absolutely indefatigable in their efforts to get the best of the Chinese market.

SCRAMBLE ON FOR OFFICES IN TEXAS MANY ARE SEEKING THE GOVERNORSHIP

HOUSTON, Texas, Jan. 10.—It is expected that the next few weeks will produce a crop of candidates for the office of governor. Especially do indications point that a number of the gubernatorial line, which now may be more than one aspirant from every section of the state, with the unlucky number passed and the figures gradually climbing toward a record of 100 for governor has become a habit, irradicable in some quarters.

WHOLE KILLERS REAP BIG PROFITS IN 1913

LONDON, Eng., Jan. 10.—The whaling season in the North Atlantic has been one of the most successful on record. It is estimated that the yield of oil amounted to about 1,000,000 tons, and the value was chiefly responsible, particularly in the southern hemisphere.

CHARGES ARE MADE AGAINST BERLIN "COPS"

BERLIN, Germany, Jan. 10.—The people of Berlin are thoroughly enjoying the sight of seeing their hated police defending themselves, or at least endeavoring to do so, against very serious accusations made in the Reichstag.

SCOTTISH NOBLEMAN MAKES FAILURE IN CONCERT TOUR

LONDON, Eng., Jan. 10.—Madame de Lohr, the Scottish laird, who not long since was coming to New York at a princely salary, has just concluded a tour in his native Highlands with a musical company.

Head of Colony of Prominent Men Is Former President Diaz

IS LIVING SIMPLY NOT BELIEVED RICH

PARIS, France, Jan. 10.—The Parisian colony of Mexican statesmen, past and present, is fast increasing. Headed by former president Porfirio Diaz, as the most conspicuous figure, it now includes Adolfo de la Lanza, Mexican minister of finance, who is visiting Paris and London to negotiate a loan for the Huerta government; Joseph Limantour, former Mexican minister of finance; Emanuel Garza Aldape, general minister of foreign affairs; public instruction and of the interior; William de Linares, former governor of the Federal District of Mexico; and Miguel Diaz Lombardo, who was Mexican minister in France under the late president Francisco Madero, and who now is president of a committee representing the Constitutionalists in Mexico.

General and Senora Diaz are living in the Avenue des Champs Elysees. The general's room faces the Arc de Triomphe, commemorating Napoleon's success. Here, where there is a view of the surroundings, the retired president spends much of his time. Ministers visit him now and then, but general Diaz is somewhat deaf, and this has increased his isolation.

The impression among persons who know General Diaz and who have been associated with him is that he is not the rich man he is supposed to be. He lives modestly, although paying \$30 a day for his apartment, and while considered to be in comfortable circumstances, his wealth is not so great as is generally supposed.

COBB HANGS PICTURES OF DEMOCRATIC PREDECESSORS

COLLECTOR Z. L. COBB, the third democratic collector in the history of the El Paso port, has hung the pictures of Judge Joseph Magoffin and former mayor Charles Eakin in his private office. These two El Pasoans were the other democratic collectors, Judge Magoffin during Cleveland's first administration, and former mayor Eakin under Cleveland during his second administration.

Angers Asquith and Delays Adjustment of Home Rule Controversy.

LACKS DIPLOMACY IN SOCIAL AFFAIRS

LONDON, Eng., Jan. 10.—One of the reasons for the delay in opening the negotiations between the Liberal and the Unionist leaders on the subject of Ulster's opposition to home rule, has been the lack of personal relations between the prime minister and Bonar Law, the leader of the opposition.

In England, until recent years, the relations between the heads of the two great parties were such that negotiations were conducted in a friendly and open at some social function, thus depriving them of that formality which so often prevents such interchanges from being successful.

Asquith, at the time, resented this very bitterly, and it still rankles in the breast of his political opponents. He, too, he has a directness that, while it arouses an audience, does not appear well in the hands of a leader of a party which prides itself on its gentlemanly instincts.

CHARGES ARE MADE AGAINST BERLIN "COPS"

BERLIN, Germany, Jan. 10.—The people of Berlin are thoroughly enjoying the sight of seeing their hated police defending themselves, or at least endeavoring to do so, against very serious accusations made in the Reichstag.

PEOPLE GREATLY PLEASED OVER DISCOMFITURE OF POLICE, WHOM THEY HATE.

HERETOFORE no charge of corruption has ever been made against the Berlin police, and it therefore caused an immense sensation when calm and level headed members of the Reichstag, who were not known to the police as being in any way connected with the police, and who seem to take a particular pleasure in cracking the heads of peaceful citizens.

CHARGES CAUSE SENSATION

HERETOFORE no charge of corruption has ever been made against the Berlin police, and it therefore caused an immense sensation when calm and level headed members of the Reichstag, who were not known to the police as being in any way connected with the police, and who seem to take a particular pleasure in cracking the heads of peaceful citizens.

MISS ZELLE EMERSON, THE AMERICAN SUFFRAGE LEADER, IS SHARPLY UNJUST TO WOMEN AND HOW NECESSARY IT IS THAT WE SHOULD HAVE A COUNSELOR'S HOUSE

MISS ZELLE EMERSON, the American suffrage leader, who has been one of the most active spirits in the organization of the "People's Army" in the East End, set her followers a good example by her arrest, and as a result of a fight which she put up, then Inspector Potter, of the Metropolitan police, has been wearing two black eyes.

GREENLAND TO BE PUT IN WIRELESS CLASS SOON

COPENHAGEN, Denmark, Jan. 10.—Plans to put Greenland into wireless communication with the rest of the world are being rapidly completed. Engineers who have returned from Greenland report that the Kigisat islands on the west coast are well adapted for the location of a wireless station from which communication can be established with stations in Denmark and Canada.

SUFFRAGETTES ARE DEPLETED

WHATEVER the cause may be, even the friends of the militants do not deny that the fighting forces are sadly depleted, and furthermore, while the backbone of the movement still continues to be made up of the old militants, the supply of recruits is becoming thinner daily.

MISS ZELLE EMERSON, THE AMERICAN SUFFRAGE LEADER, IS SHARPLY UNJUST TO WOMEN AND HOW NECESSARY IT IS THAT WE SHOULD HAVE A COUNSELOR'S HOUSE

MISS ZELLE EMERSON, the American suffrage leader, who has been one of the most active spirits in the organization of the "People's Army" in the East End, set her followers a good example by her arrest, and as a result of a fight which she put up, then Inspector Potter, of the Metropolitan police, has been wearing two black eyes.

MISS ZELLE EMERSON, THE AMERICAN SUFFRAGE LEADER, IS SHARPLY UNJUST TO WOMEN AND HOW NECESSARY IT IS THAT WE SHOULD HAVE A COUNSELOR'S HOUSE

MISS ZELLE EMERSON, the American suffrage leader, who has been one of the most active spirits in the organization of the "People's Army" in the East End, set her followers a good example by her arrest, and as a result of a fight which she put up, then Inspector Potter, of the Metropolitan police, has been wearing two black eyes.

MISS ZELLE EMERSON, THE AMERICAN SUFFRAGE LEADER, IS SHARPLY UNJUST TO WOMEN AND HOW NECESSARY IT IS THAT WE SHOULD HAVE A COUNSELOR'S HOUSE

MISS ZELLE EMERSON, the American suffrage leader, who has been one of the most active spirits in the organization of the "People's Army" in the East End, set her followers a good example by her arrest, and as a result of a fight which she put up, then Inspector Potter, of the Metropolitan police, has been wearing two black eyes.

PRETTY, BUT HAS TROUBLE IN CRUSADE

LADY GLENTWORTH FINDS GERMAN UNCHARITABLE AND PARIS TOO FRISKY. WILL COME NEXT TO UNITED STATES. PARIS, France, Jan. 10.—After a crusade to stir up interest in votes for women extending over more than half of Europe, Lady Lilian Glentworth, whose newspaper portrait describes her as "a most beautiful woman, with an April face," whatever that may mean, has come to France and is engaged in bribing equivocal deputies and senators to give their signatures to the bill in exchange for her roses, violets and smiles.

MISS ZELLE EMERSON, THE AMERICAN SUFFRAGE LEADER, IS SHARPLY UNJUST TO WOMEN AND HOW NECESSARY IT IS THAT WE SHOULD HAVE A COUNSELOR'S HOUSE

MISS ZELLE EMERSON, the American suffrage leader, who has been one of the most active spirits in the organization of the "People's Army" in the East End, set her followers a good example by her arrest, and as a result of a fight which she put up, then Inspector Potter, of the Metropolitan police, has been wearing two black eyes.

MISS ZELLE EMERSON, THE AMERICAN SUFFRAGE LEADER, IS SHARPLY UNJUST TO WOMEN AND HOW NECESSARY IT IS THAT WE SHOULD HAVE A COUNSELOR'S HOUSE

MISS ZELLE EMERSON, the American suffrage leader, who has been one of the most active spirits in the organization of the "People's Army" in the East End, set her followers a good example by her arrest, and as a result of a fight which she put up, then Inspector Potter, of the Metropolitan police, has been wearing two black eyes.

MISS ZELLE EMERSON, THE AMERICAN SUFFRAGE LEADER, IS SHARPLY UNJUST TO WOMEN AND HOW NECESSARY IT IS THAT WE SHOULD HAVE A COUNSELOR'S HOUSE

MISS ZELLE EMERSON, the American suffrage leader, who has been one of the most active spirits in the organization of the "People's Army" in the East End, set her followers a good example by her arrest, and as a result of a fight which she put up, then Inspector Potter, of the Metropolitan police, has been wearing two black eyes.

MISS ZELLE EMERSON, THE AMERICAN SUFFRAGE LEADER, IS SHARPLY UNJUST TO WOMEN AND HOW NECESSARY IT IS THAT WE SHOULD HAVE A COUNSELOR'S HOUSE

MISS ZELLE EMERSON, the American suffrage leader, who has been one of the most active spirits in the organization of the "People's Army" in the East End, set her followers a good example by her arrest, and as a result of a fight which she put up, then Inspector Potter, of the Metropolitan police, has been wearing two black eyes.

MISS ZELLE EMERSON, THE AMERICAN SUFFRAGE LEADER, IS SHARPLY UNJUST TO WOMEN AND HOW NECESSARY IT IS THAT WE SHOULD HAVE A COUNSELOR'S HOUSE

MISS ZELLE EMERSON, the American suffrage leader, who has been one of the most active spirits in the organization of the "People's Army" in the East End, set her followers a good example by her arrest, and as a result of a fight which she put up, then Inspector Potter, of the Metropolitan police, has been wearing two black eyes.

MISS ZELLE EMERSON, THE AMERICAN SUFFRAGE LEADER, IS SHARPLY UNJUST TO WOMEN AND HOW NECESSARY IT IS THAT WE SHOULD HAVE A COUNSELOR'S HOUSE

MISS ZELLE EMERSON, the American suffrage leader, who has been one of the most active spirits in the organization of the "People's Army" in the East End, set her followers a good example by her arrest, and as a result of a fight which she put up, then Inspector Potter, of the Metropolitan police, has been wearing two black eyes.

MISS ZELLE EMERSON, THE AMERICAN SUFFRAGE LEADER, IS SHARPLY UNJUST TO WOMEN AND HOW NECESSARY IT IS THAT WE SHOULD HAVE A COUNSELOR'S HOUSE

MISS ZELLE EMERSON, the American suffrage leader, who has been one of the most active spirits in the organization of the "People's Army" in the East End, set her followers a good example by her arrest, and as a result of a fight which she put up, then Inspector Potter, of the Metropolitan police, has been wearing two black eyes.

ADMIRAL AND HIS FLEET ARE ALWAYS READY

Man Who Commands on the Mexican East Coast Is an Inventor.

MAKES MANY NEW NAVAL DEVICES Revolutionizes Use of Torpedoes; Makes Marvelous New Gun Mount. WASHINGTON, D. C., Jan. 10.—An inventor, a really great inventor, directs the United States fleet off the Atlantic coast of Mexico. Also Frank Friday Fletcher, rear admiral, is a lawyer and a diplomat. Besides which he is an excellent seaman, commander and a fighter of acknowledged ability.

The navy demands considerable of a man today. He must be scholar, mechanic, student of international law, society man, diplomatist, sanitarian, and a few more. Of course, some naval officers are deficient in certain of these points and make up for their lack by excellence in others. Fletcher is great in all these lines and in addition he has added to the efficiency of our navy by a series of remarkable inventions. Some of the most valuable contrivances in use aboard craft of our fleet originated in his fertile brain.

He has also revolutionized the use of torpedoes, which has changed the behavior of these dread messengers of the sea. He has corrected many of the errors of range. Some of these things count for certain in the quickest imaginable time and with the fewest possible motions.

Then he has invented a gun mount, an arrangement of truncated cones on a pedestal by which friction is reduced to such a point that a ready weighing thousands of pounds can be trained literally with one finger and clamped instantly to fix it upon the target.

He has also revolutionized the use of torpedoes, which has changed the behavior of these dread messengers of the sea. He has corrected many of the errors of range. Some of these things count for certain in the quickest imaginable time and with the fewest possible motions.

Then he has invented a gun mount, an arrangement of truncated cones on a pedestal by which friction is reduced to such a point that a ready weighing thousands of pounds can be trained literally with one finger and clamped instantly to fix it upon the target.

He has also revolutionized the use of torpedoes, which has changed the behavior of these dread messengers of the sea. He has corrected many of the errors of range. Some of these things count for certain in the quickest imaginable time and with the fewest possible motions.

Then he has invented a gun mount, an arrangement of truncated cones on a pedestal by which friction is reduced to such a point that a ready weighing thousands of pounds can be trained literally with one finger and clamped instantly to fix it upon the target.

He has also revolutionized the use of torpedoes, which has changed the behavior of these dread messengers of the sea. He has corrected many of the errors of range. Some of these things count for certain in the quickest imaginable time and with the fewest possible motions.

Then he has invented a gun mount, an arrangement of truncated cones on a pedestal by which friction is reduced to such a point that a ready weighing thousands of pounds can be trained literally with one finger and clamped instantly to fix it upon the target.

He has also revolutionized the use of torpedoes, which has changed the behavior of these dread messengers of the sea. He has corrected many of the errors of range. Some of these things count for certain in the quickest imaginable time and with the fewest possible motions.

Then he has invented a gun mount, an arrangement of truncated cones on a pedestal by which friction is reduced to such a point that a ready weighing thousands of pounds can be trained literally with one finger and clamped instantly to fix it upon the target.