

BATTLESHIP

# ALABAMA

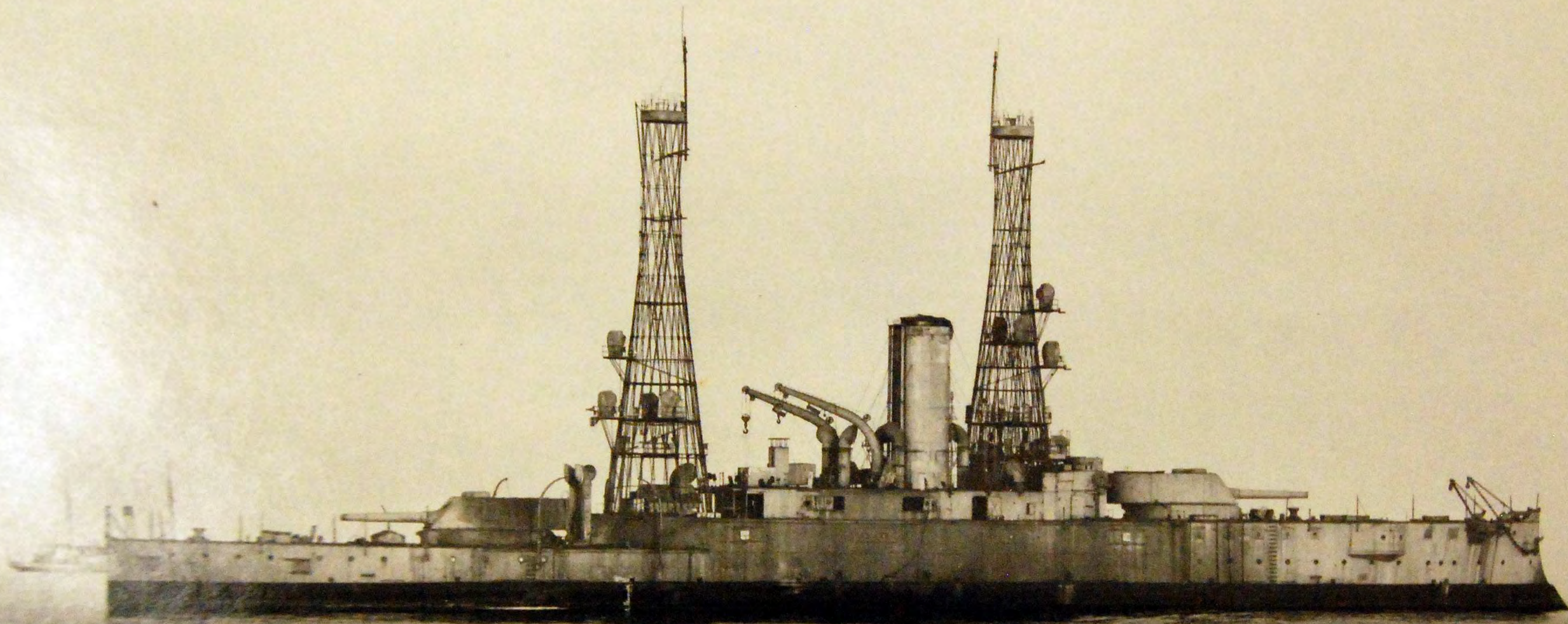


FINAL VICTIM  
OF  
BOMBING TESTS

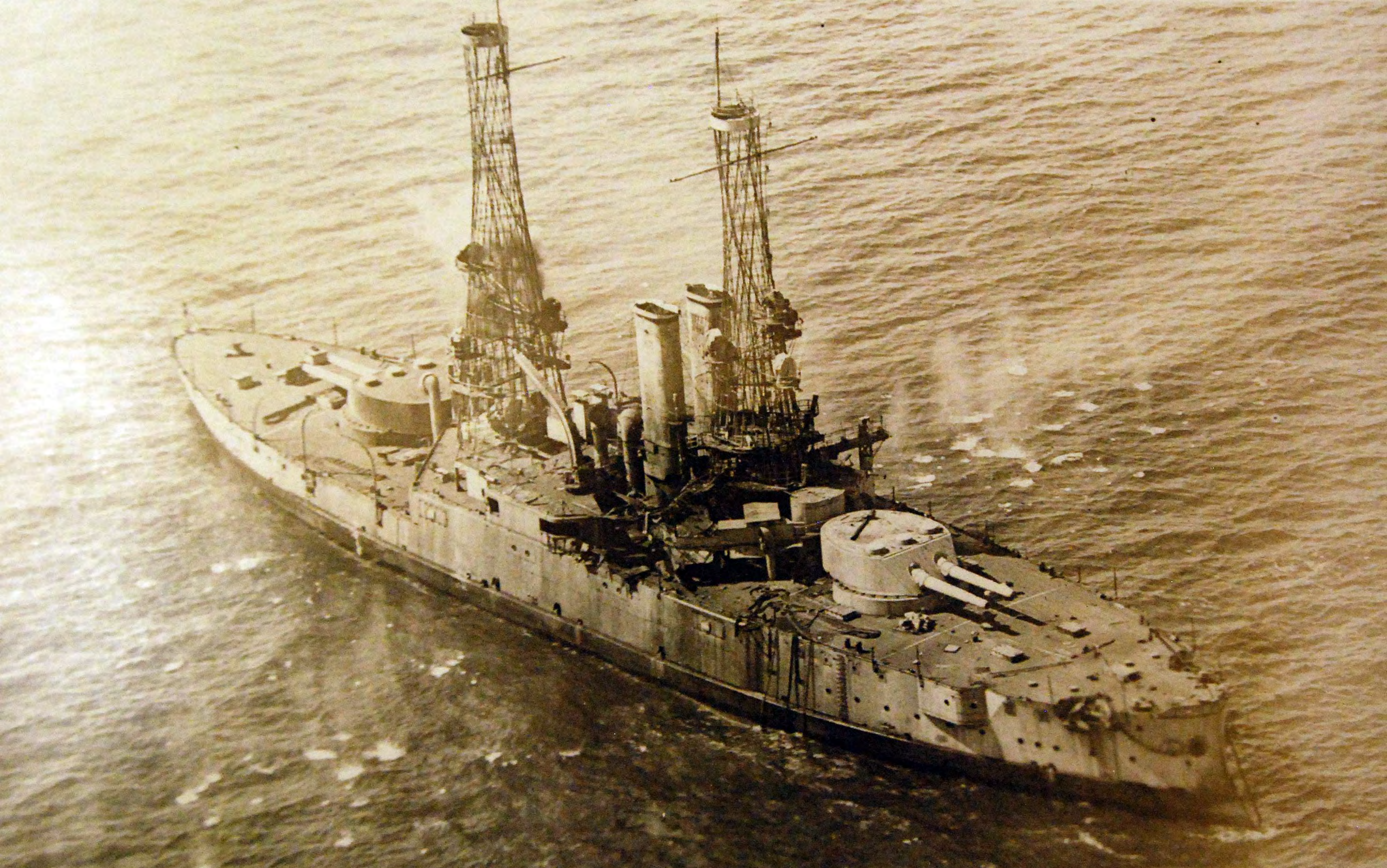


E.

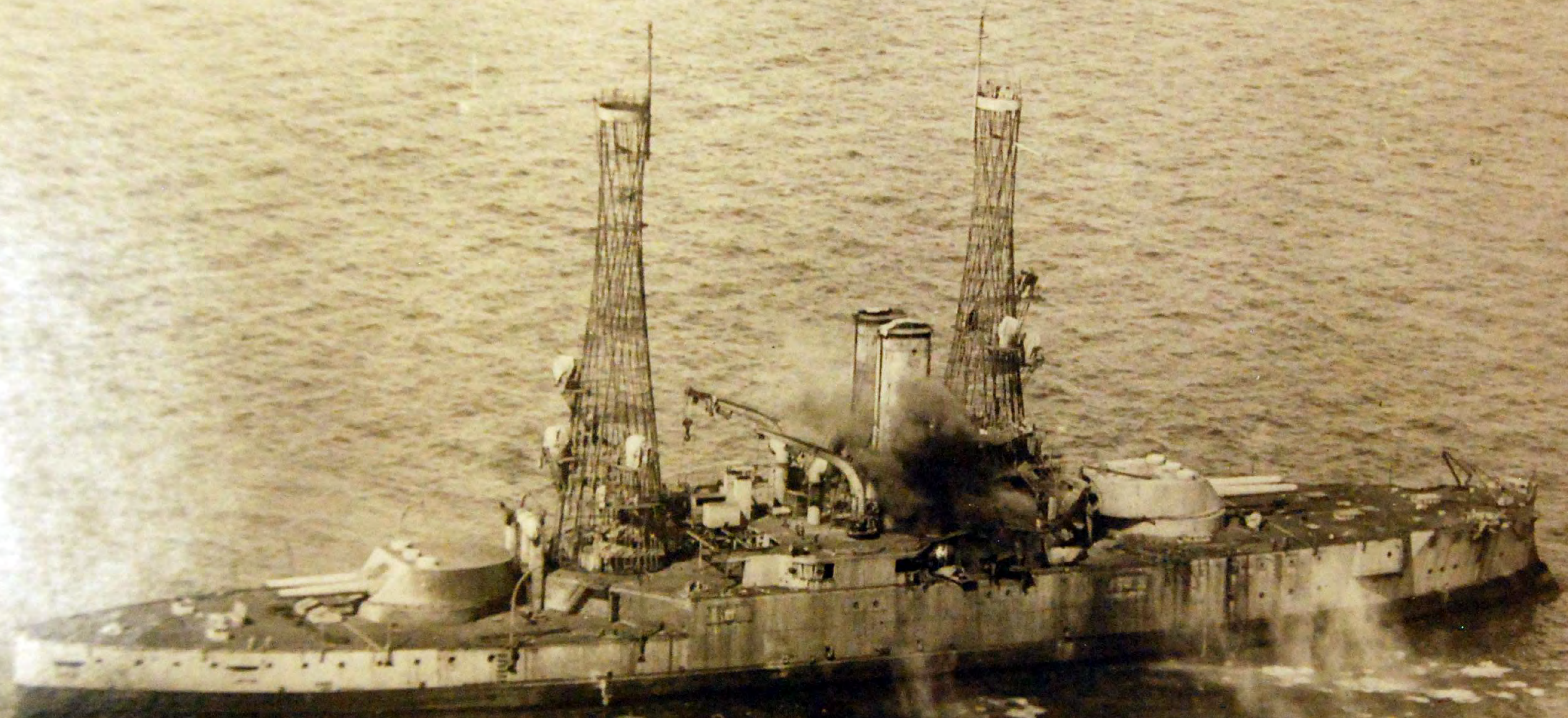
ONE



The ALABAMA.

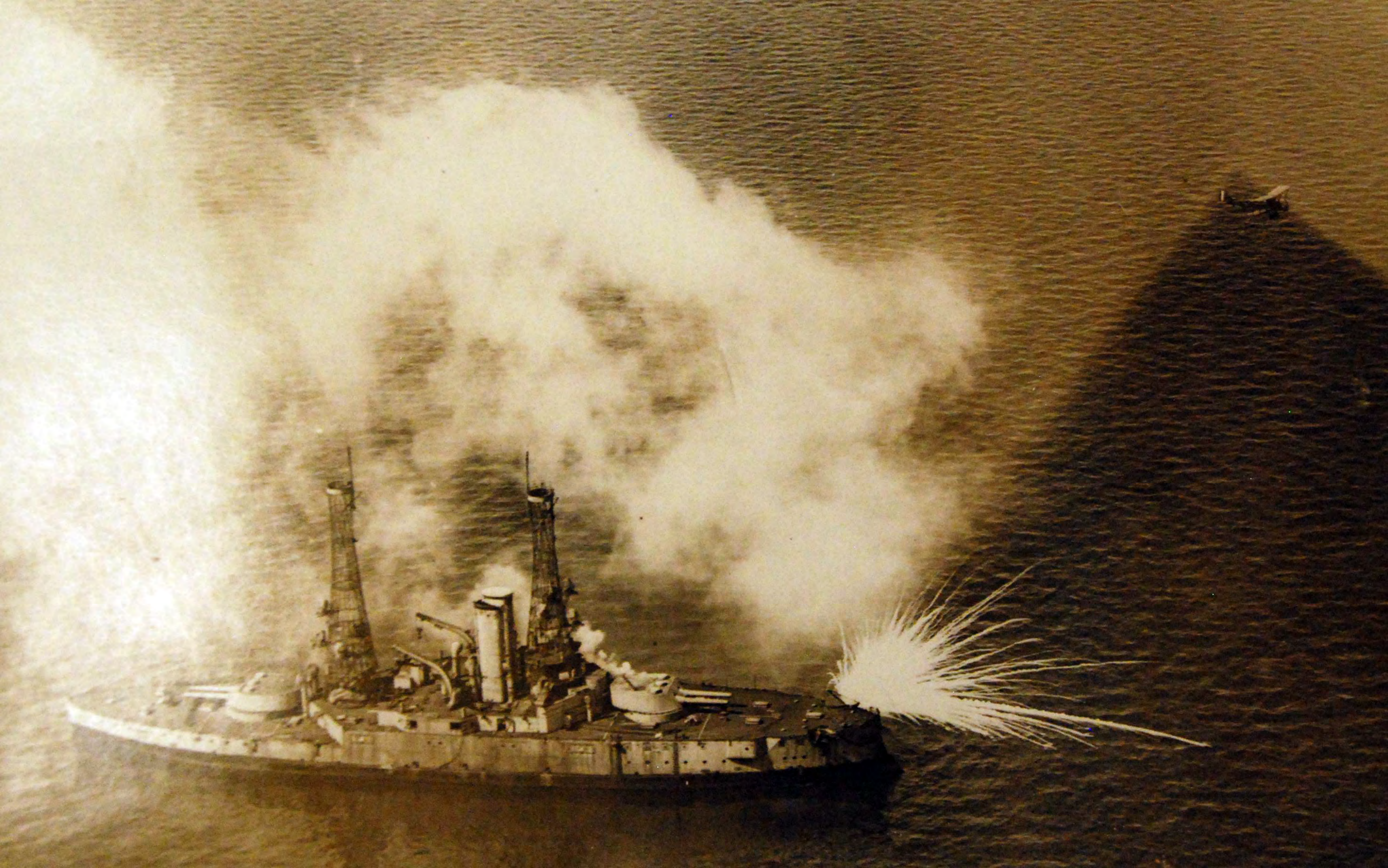


close-up - showing accuracy of Pursuit's guns and bombs



close-up - showing accuracy of Pursuit's guns and bombs.

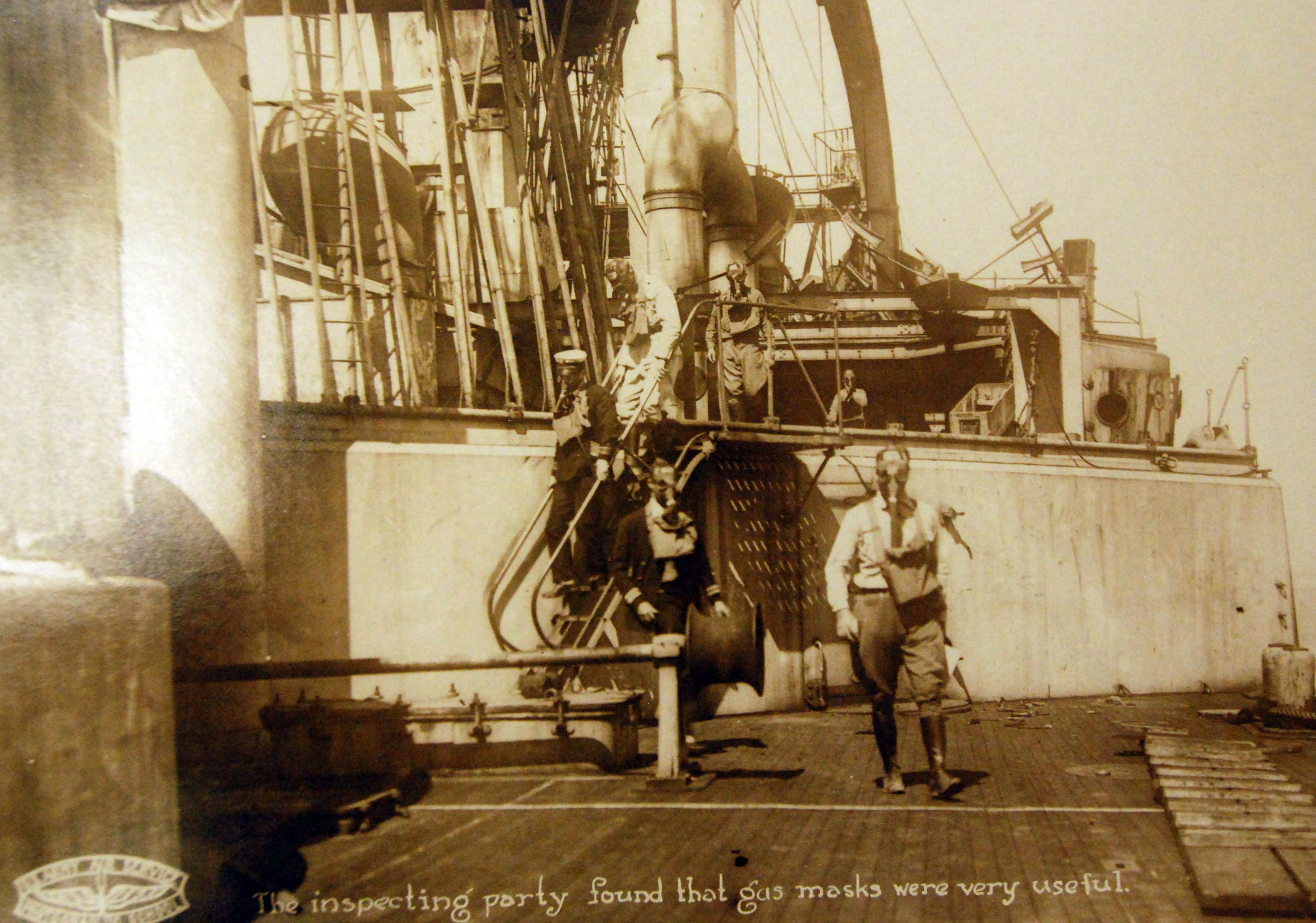








The "Martin" seen above the Alabama has just dropped four 100# white Phosphorus Bombs, one of which hits the Crow's Nest.



The inspecting party found that gas masks were very useful.









Effect of the night attack.

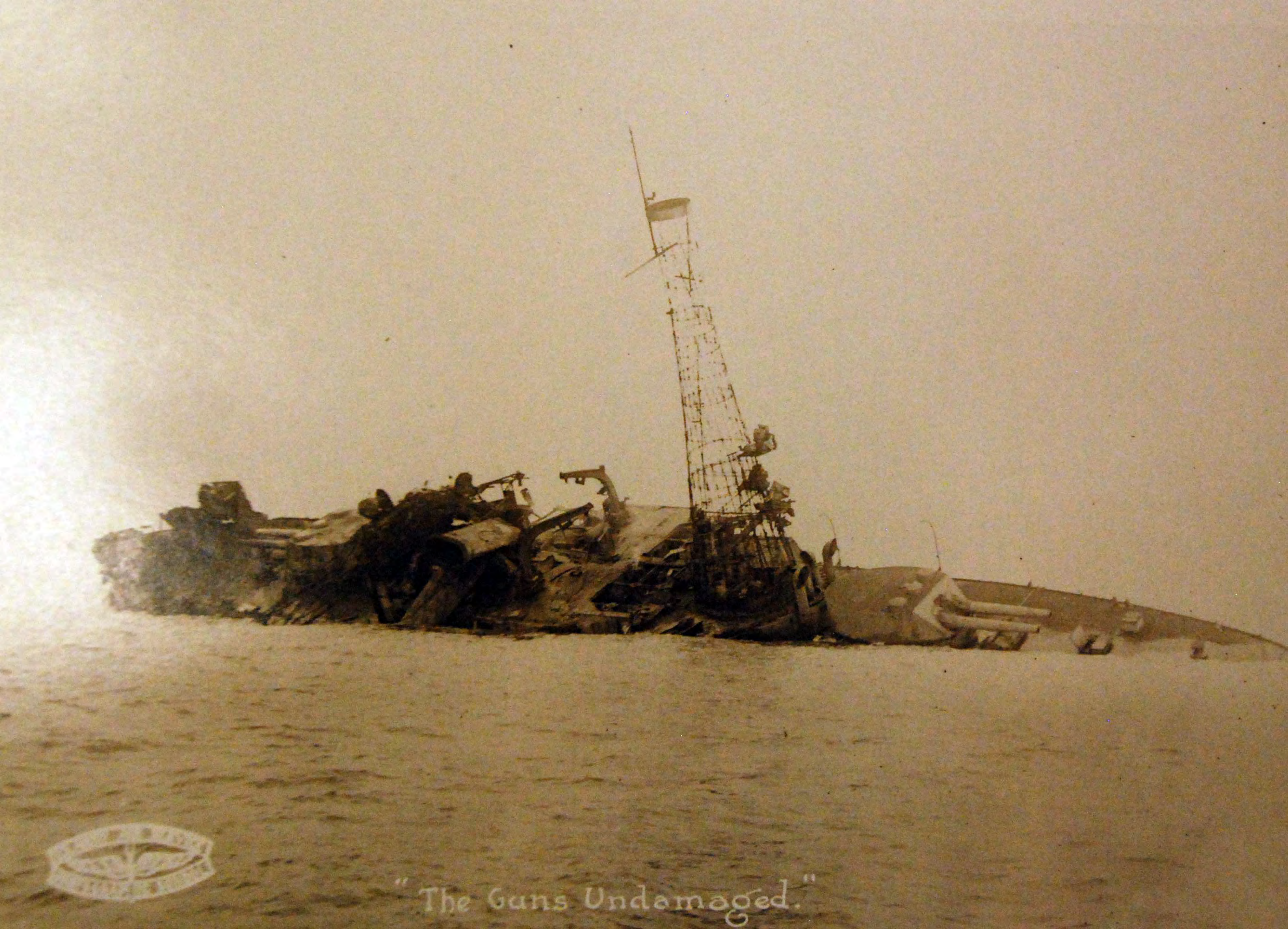


It was found that the light bombs had virtually wrecked the battleship. Scene on second deck below.



This hole was made by two 300 lb. bombs. The havoc wrought by these "light" bombs was the surprise of the test.





"The Guns Undamaged."



Hole in the side made by a "missing" bomb.



