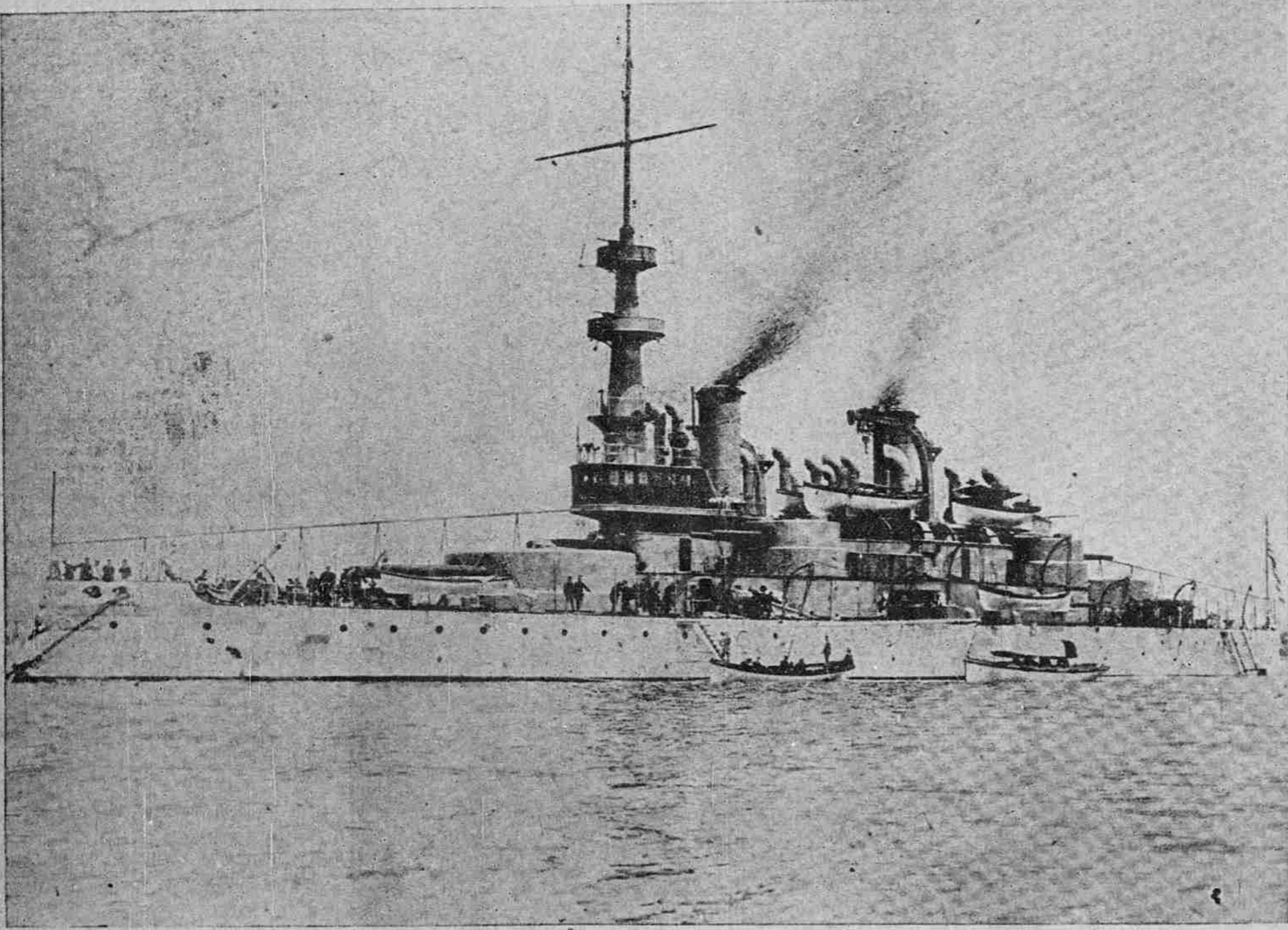


NEWS ALONG THE WATERFRONT



U. S. BATTLESHIP OREGON WHICH WILL STOP AT HONOLULU EN ROUTE FROM COAST TO ASIATIC STATION.

COAL TRADE DULL AT NEWCASTLE

Omega and S. T. Alexander Engage in Even Race From Australia.

The barkentine Omega, the schooner S. T. Alexander, and the bark Echo, all coal laden, arrived in Port Saturday morning from Newcastle, the first two making the voyage in about the same length of time. It was practically a race here. Both vessels left Newcastle on the same day and arrived here together yesterday morning, 56 days out. Captain Mackie of the Omega says the voyage in his vessel was uneventful, with light easterly winds most of the way up. The vessel was thirty-four days to the equator and twenty-two from there to Honolulu. On the way he fell in with the S. T. Alexander and the bark Echo, all three coming into port yesterday morning. The Omega brings 360 tons of coal. Speaking of the effect which the use of fuel oil has had on the coal trade, Captain Mackie says that it has caused shipping business of Newcastle to become quite dull. Few vessels were there when he left, as there is little freight offering. The colliers, however, are being worked along steadily as the local trade in Australia demands a steady output, and he does not know of any large numbers of workmen being laid off. Fuel oil has not yet entered into the calculations of the Australians and coal there continues to be as great a factor in commerce as ever. Captain Mackie noticed yesterday for the first time the big oil tanks at Twilvel and commented on them by saying: "Yes, that knocks out the coal carrying business, but if the worst comes to the worst, I guess we can begin to carry oil."

Ship Ivy's Strange Crew.

Laden with 1,000 tons of sulphur, the ship Ivy entered port yesterday from Hakodate, Japan, and moored at the railway wharf. She was thirty-two days out on a trip that was uneventful except that the vessel carried a crew of many colors, speaking many languages, and orders were conveyed mostly in the sign language. Most of the crew was taken on at Shanghai and are for the most part Malays and Manlans. When they got to sea it was found they knew practically nothing of seamanship and considerable trouble was experienced in getting them to perform the duties required of them. However, the vessel was brought across the Pacific without splitting a sail or losing anyone overboard. The Ivy has been on the Asiatic coast for some time.

Hilo Shipping Notes.

Shipping items at Hilo up to the departure of the Claudine on Thursday were as follows:
Charter: Schooner Metha Nelson, Portland; schooner Quickstep, Columbia River.
Vessels in port: Schooner Emma Claudina, Mickelsen; ship Falls of Clyde, Matson; schooner Kona, Dinsmore; schooner R. C. Slade, P. Sourenberg; schooner Transit, Jergensen.
Arrived: American schooner Transit, Jergensen, Columbia River.
The ship Falls of Clyde arrived in Hilo October 1 with a cargo of assorted merchandise, valued at \$38,170.
The Martha Davis sailed for San

Francisco Monday with the following cargo: 650 bags Honomu sugar, 65 bundles hides, 99 bags coffee; 5 bundles leather, 109 bags empty bottles, 22 empty wine casks and 16 empty beer casks.

The Kona will be discharged of her cargo of piles by tomorrow night, after which the Slade, with 875,000 feet of lumber, will move into her berth and begin discharging cargo. The piling destined to support the big dock was unloaded in quick time by the use of a system devised by W. H. Little of the Hilo Mercantile Co. An endless chain operated by a donkey engine jerked the sticks ashore, averaging one every five minutes.—Hilo Tribune.

It is stated authoritatively that the Enterprise will not go to Hilo in November, but will be held over at the coast to have accommodations built on her for second class passengers.

Fell Down a Hatchway.

Peter Peterson, mate of the ship Florence, met with a bad accident Saturday just prior to the sailing time of the vessel, and now lies in the Queen's hospital suffering from severe bruises and strains to his back. While preparations were under way for the ship's departure Peterson tripped and fell down a hatchway upon the cargo. He was picked up unconscious, and at first it was thought his back was broken. At the Queen's hospital it was found there were no bones broken, but the length of the fall had shaken the man badly and Saturday night he was in much pain. The ship delayed her sailing to await the recovery of the mate.

Talula Again in Commission.

The little steamboat Talula, after being overhauled, her machinery painted and smokestack glossed to a shiny black, is again in commission and Saturday towed some of Cotton Brothers barges across the harbor. This week she will probably begin towing the barges down to the entrance to Pearl Harbor.

Round the Horn.

The bark Kalulani, the fine vessel owned by Hackfeld & Co., which has been on the run between San Francisco and Honolulu is to be put into the round the Horn sugar trade.

Shipping Notes.

The barkentine Lahaina is at Eleele discharging.
The barkentine Hawaii is discharging coal at Makaweli.
The increased number of wind jammers in port yesterday, both in berth and in the row, gave the harbor something of its old time appearance.
The ship Florence earned \$3,000 demurrage in Seattle and received \$9,000 freight on coal cargo, making the total earnings for the trip \$12,000.
Purser Kaas of the Nilhau reports the following sugar on Kaula: K. S. M., 1,900 bags; V. K., 700; W., 500; Mak., 2,350; G. & R., 4,450; total, 8,900.
Purser Kibling reports the following cargo brought here by the steamer Maui: Twenty bags of corn, 166 palai, 25 hogs, 2 mules, 1 horse, 184 packages sundries.
The W. G. Hall came in from Kaula yesterday morning with 100 bags rice train and 73 packages of sundries. The purser's report of sugar in Kaula is 8,500 bags.
The Italian ship Wallacefown, 226 days out from London, which called at a South American port for repairs, is due here shortly and may arrive in the next ten days.

MRS. NELSON MILES LOST A MAID

Colored Girl Chased Transport Thomas Five Miles in a Launch.

When the transport Thomas sailed promptly at noon on Saturday Mrs. Miles, wife of Lieutenant General Miles, departed minus a mild colored damsel of Honolulu who had been engaged during the stay of the distinguished officer in Honolulu. The girl, who is considered quite "hansum" among her colored friends, was engaged on Friday. She was told to be on the steamer before 12 noon, Saturday. All of Friday she spent in saying good bye to her friends and relatives and on Saturday morning packed her trunk and spent considerable time in town buying up articles of wear. An express wagon was hired, and at 11:30 the trunk was started on its way to the naval dock. After some delays the girl herself also started, but with meeting one acquaintance and another, her anguish was great when she arrived at the dock for the Thomas was heading out of the channel just opposite the lighthouse. She took a back and drove round to the Healani boathouse and telephoned one of Young Brothers' launches. But even after the launch was at the landing she insisted on waiting for her trunk and its precious contents. Finally after losing eight minutes in this way, she decided to pursue the great transport. The launch was put to the test as to speed. She dashed over the wavelets, and seemed to have a good chance to overtake the vessel, but at last the pilot went over the side, got into his boat, and the transport then moved forward at a thirteen knot gait, which left the launch behind. The girl waved her parasol and her handkerchief and screamed at the captain to wait, and finally sank down exhausted. The launch went out about five miles, but the transport did not wait, even for the maid of the general's wife. Mrs. Miles lost a maid and the maid lost a job.

Jackies Go to Church.

Nearly a hundred sailors from the German warship Cormoran were taken ashore yesterday in command of three officers and marched through the streets to the quaint little German Lutheran Church on Beretania street where divine service was held by the pastor, Rev. Mr. Felmy. This is the first time the church has held a congregation of man of war-men. In the afternoon the tars dressed ship and the fine little craft was thrown open for inspection. Young's launches conveyed dozens of visitors to the vessel who were shown over it from stem to stern. A number of friends of the officers went aboard and were entertained on the afterdeck. Throughout the afternoon the warship's band played entrancing music.

Bough Weather at Kaaanapali.

Purser Griggs of the Noeau which arrived yesterday from Hawaiian ports reports that on Friday morning when the vessel reached Kaaanapali seas were breaking over the landing and the captain was compelled to go to Waipio and anchor until Saturday morning, when the Japanese and freight were landed

The S. S. Kaula reached Kaaanapali Saturday night and followed pretty closely after the Nilhau to Lahaina.

AT AUCTION
BY **WILL E. FISHER**
AUCTIONEER

Auction Sale

SATURDAY, OCT. 18, 1902,

BY **WILL E. FISHER,**
AUCTIONEER.

MORTGAGEE'S NOTICE OF INTENTION TO FORECLOSE AND OF SALE.

NOTICE IS HEREBY GIVEN THAT by virtue of the power of sale contained in a certain chattel mortgage dated April 14th, 1902, made by Geo. H. Paris of Honolulu, Island of Oahu, Territory of Hawaii, as mortgagor, to the First National Bank of Hawaii, at Honolulu, a corporation, also of Honolulu, aforesaid, as mortgagee, and recorded in the Registry of Deeds in said Honolulu, in Liber 237, on pages 41 and 42, the First National Bank of Hawaii, at Honolulu, as mortgagee, intends to foreclose said mortgage for a breach of the conditions, to wit, the non-payment of the principal and interest when due.

Notice is also given that all and singular the personal property in said mortgage set forth and referred to will be sold at public auction at No. 135 Merchant street in said Honolulu, by Will E. Fisher, auctioneer, on Saturday, the 18th day of October, 1902, at 12 o'clock noon. The property contained in and covered by said mortgage is described as follows, to wit: "One each 5 h. p. F. M. & Co. Special Electric Gasoline Engine, 5" Eugene Lathe, Foot Power Lathe, Drill Press, Pipe Threader, Whitewash Sprayer, 5" B. & J. Centrifugal Pump, 3" ditto, Electric Switch-board complete, except Rheostat, Electric Sign-Board "Welcome," 16 h. p. Crude Oil Separator, Large Workbench, Small ditto, Set of Pipe Taps and Die, ditto 1 1/2" to 2", ditto 2 1/2" to 4", Set Taps and Dies for bolts and nuts, Full Set Pipe Wrenches, Monkey, Alligator, Flat Stilson and other Wrenches, Carpenter Saws, Machinist's Saws, Hammers, Sledges, Pliers, Braces, Bits, Beaters, Planes, Draw-knives, Screw Drivers, Calipers, Blocks and Tackles, Ropes, Bolts, Screws, Pipe, Fittings, about 500 feet 1/2" Galv. Pipe, about 800 feet 3/4" ditto, one lot of 3/4" to 6" Black Iron Pipe not belonging to P. & M. Co. Engines, 5 Sparkling Dynamamos, 1/2 Barrel Salamonia, Main Shafting, Counter Shafting, Hangers, all Pulleys, in or out of use, Belting and everything belonging to the shop equipment, and all else being a part of the machinery business and owned by the said mortgagor, contained in that certain pipe-framed iron building at No. 135 Merchant street in said Honolulu.

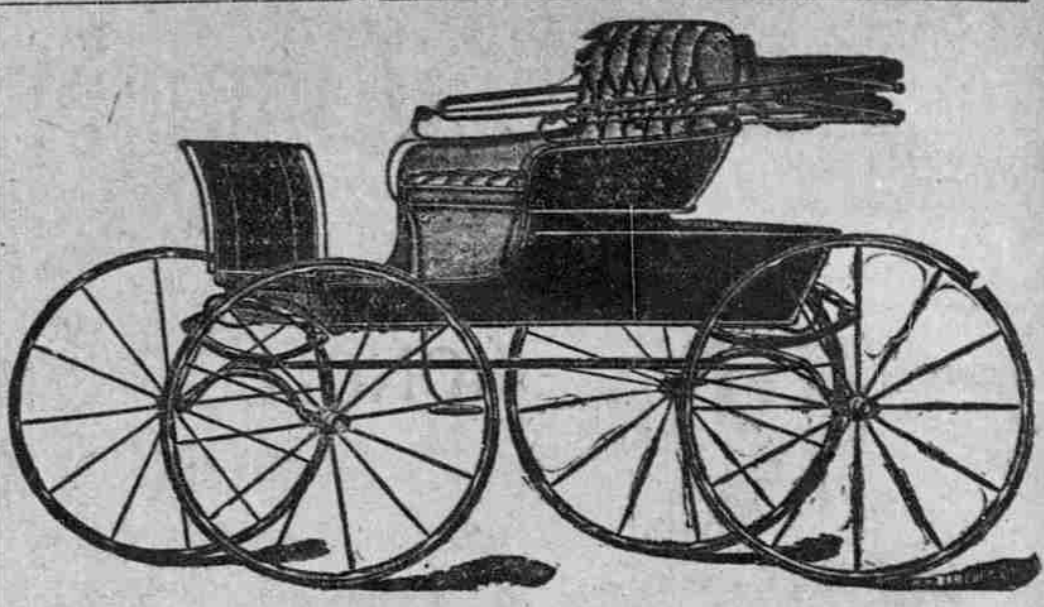
THE FIRST NATIONAL BANK OF HAWAII.

At Honolulu, Mortgagee. Terms, Cash; conveyances at expense of purchaser.

For further particulars apply to W. C. PARKE, 309 Judd Building, attorney for mortgagee.

Dated Honolulu, Sept. 25, 1902.

WILL E. FISHER,
AUCTIONEER.



Low Wheel Buggies at Cost

To dispose of our stock of Low Wheel Rubber Tired Buggies, we will sell them at cost.

Former Prices	\$160.	Now	\$125.
" "	175.	" "	135.
" "	200.	" "	160.
" "	250.	" "	200.

Note these figures—Nothing like them were offered before. Substantial reductions on all other vehicles. Harness, Whips, etc. likewise reduced.

Pacific Vehicle & Supply Co. Ltd.
Beretania St., Near Fort.

Panama Hats

Genuine Article

Sold at lowest prices. Call and see our stock at
K. ISOSHIMA
King Street, next to Castle & Cooke.

HAWAIIAN SODA WORKS

OUR SODA WATER IS ALWAYS SPARKLING AND DELICIOUS. You will know it is ours without looking at the label, because it is always the same, never flat or insipid.

"Lovers" "Progress Brand"

of good wholesome beer will find the just the thing they have been looking for.

This famous beer is brewed by the Indianapolis Brewing Co. and was awarded the highest honors at the Paris Exposition, 1900.

We are in receipt per S. S. Alameda of a large consignment of the above beer in pints and quarts and guarantee its quality to be superior to anything offered to the public heretofore.

With every order for a case of Progress beer we will send a dozen fancy glasses free of charge. Only one dozen to each customer. Orders delivered to any part of the city.

Gomes & McTighe,
Wholesale Liquor Dealers, 73-75 King St., Honolulu, Territory of Hawaii. Telephone Main 140.

Sterling the Painter

Has added to his Paint Shop a large stock of

WALL PAPER

Also an Experienced Paper Hanger as salesman, who will be pleased to give information about Paper Hanging and Decorating.

Competent Paper Hangers employed and always on hand. Reasonable Prices.

SAME OLD STAND, UNION STREET

Triangle Grocery Store
Corner of King and South Streets. Telephone White 3091.
Groceries and Provisions

Golden Gate Flour
Libby's Brand Meats
Best Kona Coffee
Choice Creamery Butter

Goods delivered to any part of the city.
Waverley Shaving Parlors
Corner Bethel and Hotel Streets.
MRS. D. W. ROACH,
CHAS. A. RIDINGER,
Proprietors.

Now that vacation's over you'll find dust has accumulated during your stay in the country.

Telephone or write us for a duster or brush. We have them of every description.

- | | |
|-------------------------------|----------------|
| Dusters | Brushes |
| Picture | Wall |
| Parlor | Ceiling |
| Carriage | Furniture |
| in ostrich or turkey feathers | Floor |
| | Window |
| | Carpet |
| | Rubster |
| | Silver |
| | Cut Glass |

Not cheap brushes, but good ones.

LEWIS & CO.
THE GROCER.
240—Two Telephones—240
1006 FORT STREET.

PHOTOGRAPHIC PORTRAITS

Fine Assortment of ISLAND VIEWS. Send for list.
First Class Work Guaranteed

Danway
PHOTOGRAPHIC CO., LIMITED.
MOTT-SMITH BLOCK,
Corner Fort and Hotel Streets.

Keystone-Elgin WATCHES

DURABLE AND ACCURATE
The Keystone Watch Case Co. ESTABLISHED 1868 Philadelphia, U.S.A.
America's Oldest and Largest Watch Factory
For sale by The Principal Watch Dealers in Hawaiian Islands

FINE PASTURAGE.
Horses and cattle pastured close to Honolulu, 300 acre run; for terms, etc., apply to room 606 Stangenwald building.